

**southco**

PROPRIETARY ITEM - EXCEPT FOR USES EXPRESSLY GRANTED IN WRITING INFORMATION DISCLOSED HEREON IS CONFIDENTIAL AND ALL RIGHTS PATENT AND OTHERWISE ARE RESERVED BY SOUTHCO, INC.

**EJECTOR**  
**1mm FACEPLATE, PLUNGER MICROSWITCH**

DATE	DRAWN	CHKD	SCALE
02MAY2005	RES	AJH	2:1

DRAWING NUMBER  
**J-P7-A-533-11**

REV	DATE	DRAWN/CHKD	DESCRIPTION	PART NUMBER	MATERIAL AND FINISH	COLOR
A	27JAN2006	MDY/AJH	PRN: P2006-0182	P7-A-533-11	SEE NOTE A	SEE NOTE A
B	21JUN2006	AJH/MDY	PRN: P2006-0862	P7-A-533-11-XXX	SEE NOTE A	SEE J-47-0-3 FOR COLOR ONLY
C	15JUN2007	RES/AJH	PRN: P2007-0786			
D	11JAN2008	VSV/VGV	PRN: P2008-0032			

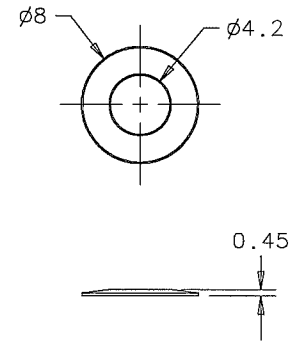
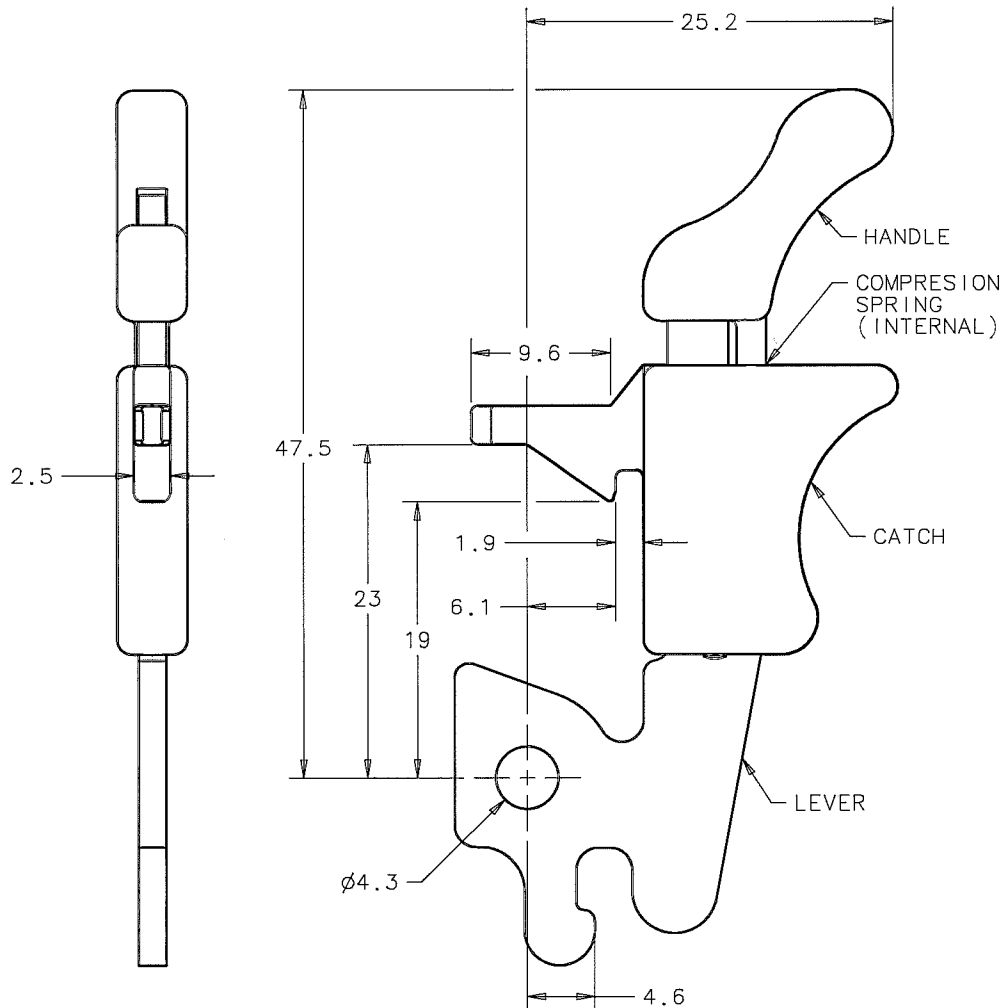
**MILLIMETERS**

ALL DIMENSIONS WITHOUT TOLERANCES ARE FOR REFERENCE ONLY.

THIRD ANGLE PROJECTION

A4 PAPER SIZE

SHEET 1 OF 2



**BELLEVILLE WASHER**

**NOTES:**

**A. MATERIAL AND FINISH:**

- LEVER: LOW CARBON STEEL, ZINC PLATE PLUS CHROMATE DIP
- CATCH AND HANDLE: NYLON 6, 33% GLASS FILLED, UL 94 V0, BLACK
- COMPRESSION SPRING AND BELLEVILLE WASHER: 300 SERIES STAINLESS STEEL, NATURAL

**B. SURFACES CONFORM TO CLASS C DESIGNATION AS DESCRIBED IN SOUTHCO COSMETIC SPECIFICATIONS: S-121-02 FOR ZINC PLATING S-121-04 FOR PLASTIC COMPONENTS**

**C. RoHS COMPLIANT.**

**southco**

PROPRIETARY ITEM - EXCEPT FOR USES EXPRESSLY GRANTED IN WRITING INFORMATION DISCLOSED HEREON IS CONFIDENTIAL AND ALL RIGHTS PATENT AND OTHERWISE ARE RESERVED BY SOUTHCO, INC.

**EJECTOR**  
1mm FACEPLATE, PLUNGER MICROSWITCH

DATE	DRAWN	CHKD	SCALE	DRAWING NUMBER
02MAY2005	RES	AJH	1:1	J-P7-A-533-11

REV	DATE	DRAWN/CHKD	DESCRIPTION	PART NUMBER	MATERIAL AND FINISH	COLOR
A	27JAN2006	MDY/AJH	PRN: P2006-0182	P7-A-533-11	SEE NOTE A	SEE NOTE A
B	21JUN2006	AJH/MDY	PRN: P2006-0862	P7-A-533-11-XXX	SEE NOTE A	SEE J-47-0-3 FOR COLOR ONLY
C	15JUN2007	RES/AJH	PRN: P2007-0786			
D	11JAN2008	VSV/VGV	PRN: P2008-0032			

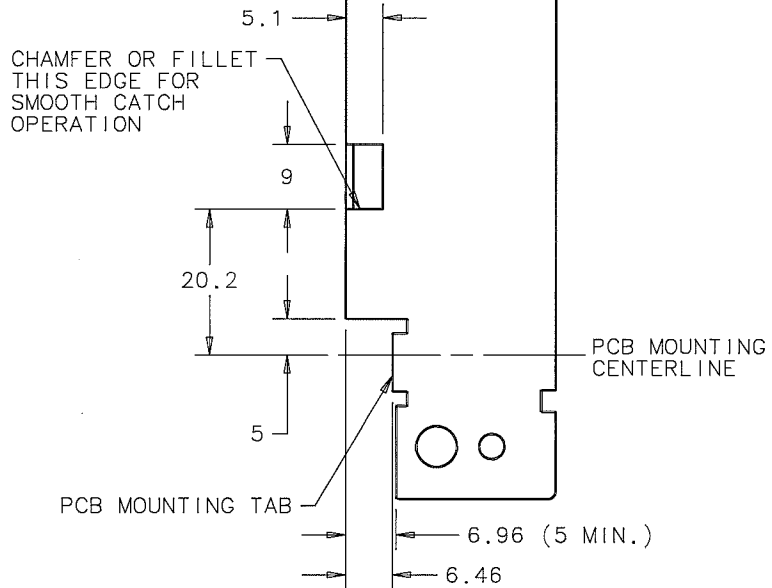
**MILLIMETERS**

ALL DIMENSIONS WITHOUT TOLERANCES ARE FOR REFERENCE ONLY.

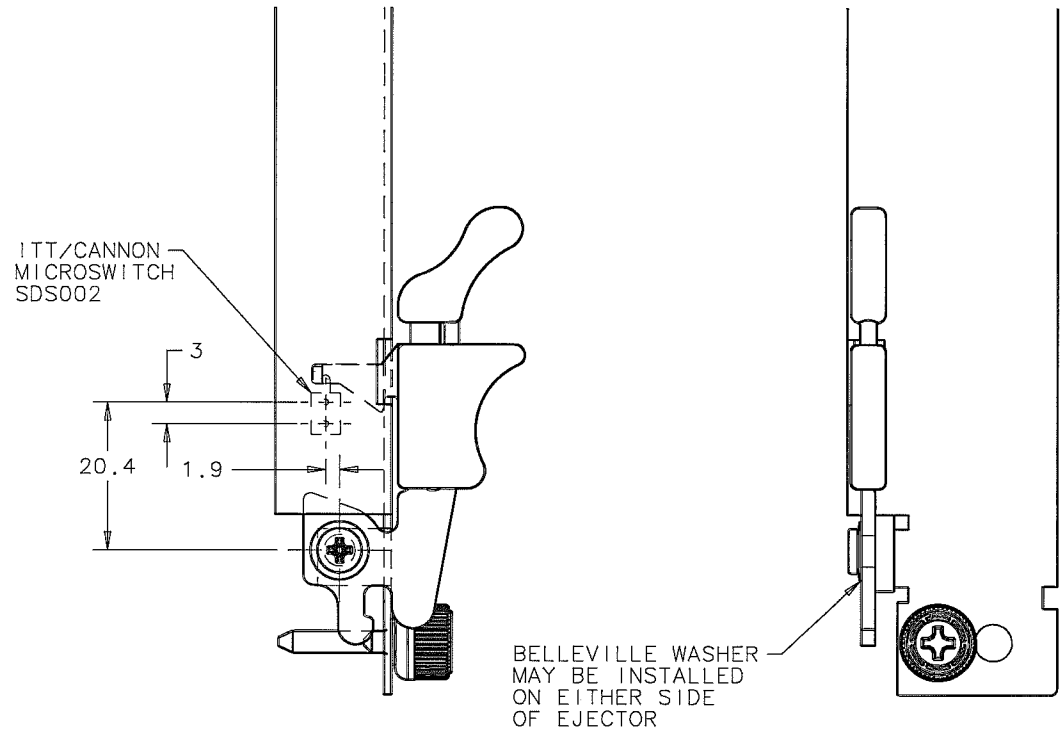
THIRD ANGLE PROJECTION

A4 PAPER SIZE

SHEET 2 OF 2



**PANEL PREPARATION**  
FACEPLATE THICKNESS 1mm



**EJECTOR INSTALLATION**