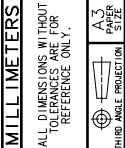


REV	DATE	DRWNG/CHKD	DESCRIPTION
H	01MAY2003	WJ/ALUS	PRN: E2003-0339
I	19JUN2003	RLR/MUS	PRN: E2003-0504
J	13AUG2004	WJ/ALUS	PRN: E2004-0953
K	06SEP2005	WJ/RLR	PRN: E2005-1167
L	06SEP2005	WJ/RLR	PRN: E2005-1167

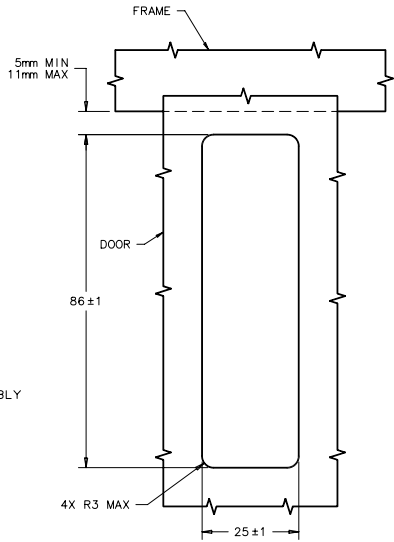
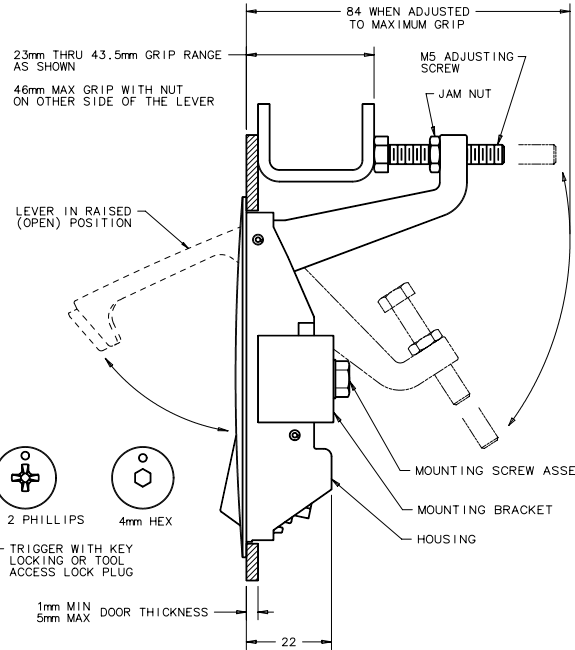
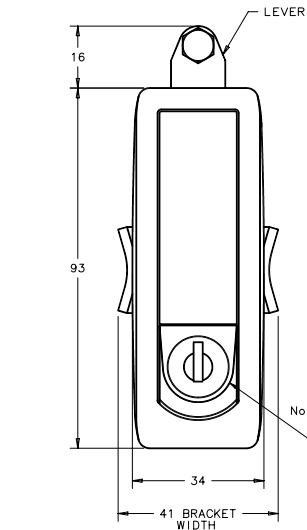
DATE	DATE	DATE	DATE
24FEB93			

SCALE	SCALE
1:1	

MILLIMETERS
ALL DIMENSIONS WITHOUT TOLERANCES ARE FOR REFERENCE ONLY.



	ASSEMBLY PART NUMBER TABLE						
	BLACK POWDER COATED	TEXTURED CHROME FINISH	SILVER POLYESTER POWDER COATED	CARDINAL WHITE POWDER COATED	LIGHT GRAY POWDER COATED	SILVER METALLIC POWDER COATED	FURNITURE WHITE POWDER COATED
KEY LOCKING	C2-33-25	C2-33-21	C2-33-27	C2-33-24	C2-33-26	C2-33-28	C2-33-29
4mm HEX RECESS	C2-33-45	C2-33-41	C2-33-47	C2-33-44	C2-33-46	C2-33-48	C2-33-49
No. 2 PHILLIPS	C2-33-105	C2-33-101	C2-33-107	C2-33-104	C2-33-106	C2-33-108	C2-33-109
WITHOUT LOCK PLUG	C2-33-135	C2-33-131	C2-33-137	C2-33-134	C2-33-136	C2-33-138	C2-33-139



- NOTES:
- MATERIAL AND FINISH: HOUSING, LEVER, LOCK PLUG AND TRIGGER: DIE CAST ZINC, SEE ASSEMBLY PART NUMBER TABLE.
 - U-SPRING: 302 STAINLESS STEEL, PASSIVATED.
 - TORSION SPRING: 302 STAINLESS STEEL, NATURAL.
 - SPIROL PIN: SAE 51420, NATURAL
 - LOCKWASHER: SPRING STEEL, ZINC ALLOY PLATE BRIGHT PLUS SEALER.
 - SCREWS AND HEX NUT: LOW CARBON STEEL, ZINC ALLOY PLATE BRIGHT PLUS SEALER.
 - BRACKET: 1010 STEEL, ZINC ALLOY PLATE BRIGHT PLUS SEALER.
 - KEYS: BRASS, NICKEL PLATED.
- B. MOUNTING SCREW ASSEMBLY CONSISTS OF: M5 SCREW WITH LOCKWASHER. USE LONGER SCREWS (NOT SUPPLIED) FOR THICKER DOORS.
- C. LOCKPLUG INSTALLATION:
- POSITION LOCKPLUG AND ORIENT RETAINING WAFFER (LAST WAFFER LOCATED AT THE BOTTOM OF LOCK) AT THE 3 O'CLOCK POSITION AND INSERT INTO THE TRIGGER.
 - BE SURE THE LOCKPLUG IS FULLY SEATED AGAINST THE TRIGGER, THEN REMOVE KEY.

PANEL PREPARATION