

| DATE | DRAWN | CHKD | SCALE |
|---------|-------|------|-------|
| 18JUN92 | JGK | | 3/4 |

ASSEMBLY PART NUMBERS AND DESCRIPTION

| PANEL THICKNESS | SHORT LEVER GRIP RANGE* | BLACK ASSEMBLY WITH PLATED STEEL HARDWARE | BLACK ASSEMBLY WITH STAINLESS STEEL HARDWARE | SILVER ASSEMBLY WITH PLATED STEEL HARDWARE | SILVER ASSEMBLY WITH STAINLESS STEEL HARDWARE | CARDINAL WHITE ASSEMBLY WITH STEEL HARDWARE | CARDINAL WHITE ASSEMBLY WITH STAINLESS STEEL HARDWARE |
|-----------------|-------------------------|-------------------------------------------|----------------------------------------------|--------------------------------------------|-----------------------------------------------|---------------------------------------------|-------------------------------------------------------|
| 1-11 | 1-14 | C5-11-15 | C5-11-16 | C5-11-13 | C5-11-14 | C5-11-11 | C5-11-12 |
| 11-21 | | C5-12-15 | C5-12-16 | C5-12-13 | C5-12-14 | C5-12-11 | C5-12-12 |

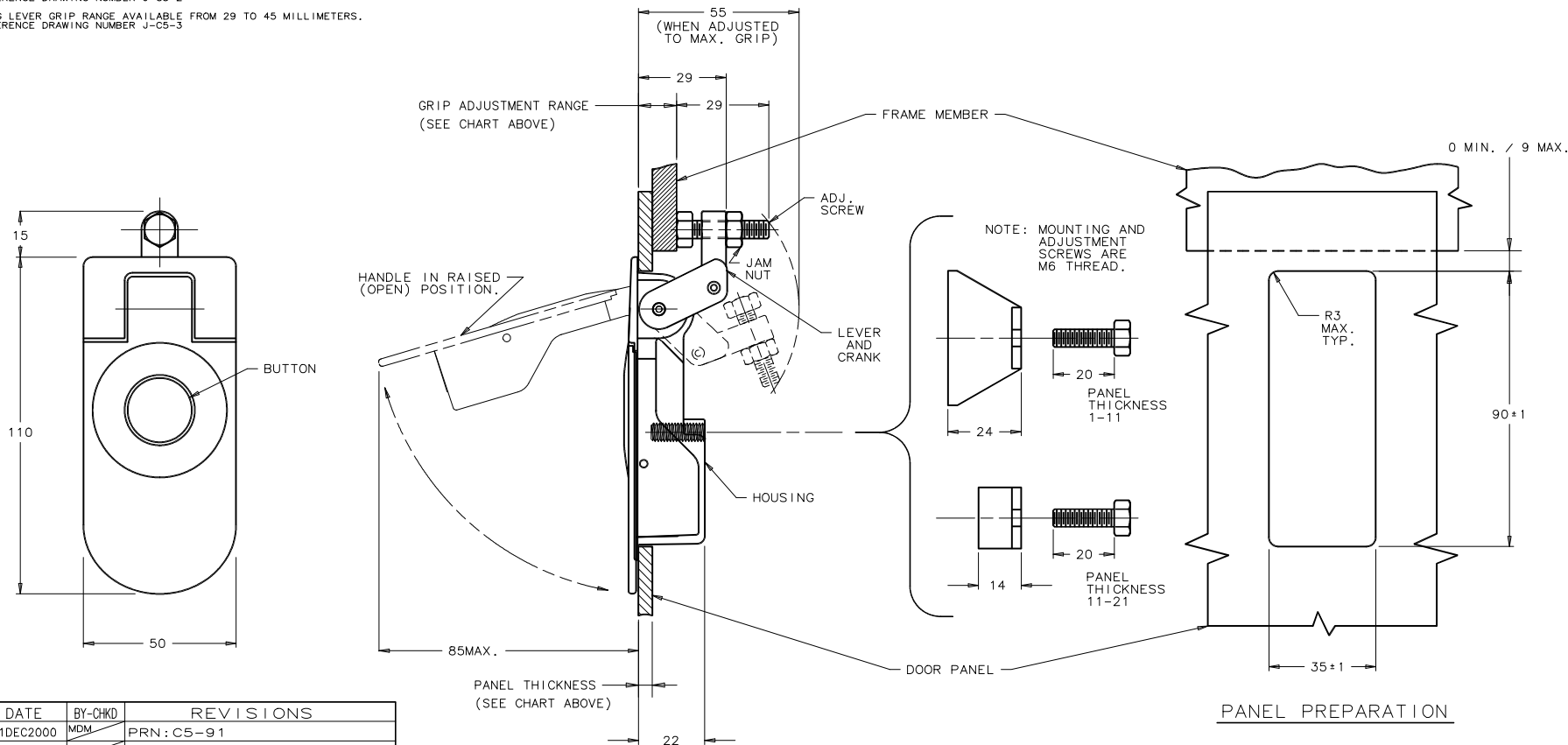
* MEDIUM LEVER GRIP RANGE AVAILABLE FROM 14 TO 29 MILLIMETERS. REFERENCE DRAWING NUMBER J-C5-2

LONG LEVER GRIP RANGE AVAILABLE FROM 29 TO 45 MILLIMETERS. REFERENCE DRAWING NUMBER J-C5-3

MATERIAL AND FINISH

LATCH ASSEMBLY CONSISTS OF:
HOUSING, HANDLE AND BUTTON:
DIE CAST ZINC, SEE TABLE FOR FINISH.
LEVER AND CRANK: DIE CAST ZINC, COATED WITH CLEAR CHEMICAL PROTECTIVE FILM.
BLACK TORSION SPRING: 303 STAINLESS STEEL, PASSIVATED.
ROLL PINS: 420 STAINLESS STEEL, PASSIVATED.
O-RINGS: BUNA-N RUBBER, BLACK.

HARDWARE CONSISTS OF:
MOUNTING BRACKET
MOUNTING SCREW
ADJUSTING SCREW
JAM NUT
1010 STEEL, ZINC PLATED WITH SEALED CHROMATE.
OR
300 SERIES STAINLESS STEEL, PASSIVATED.



| REV. | DATE | BY-CHKD | REVISIONS |
|------|-----------|---------|------------|
| D | 21DEC2000 | MDM | PRN: C5-91 |
| | | | |
| | | | |

PANEL PREPARATION

THIRD ANGLE PROJECTION,
ALL DIMENSIONS ARE MILLIMETERS

PROPRIETARY ITEM - EXCEPT FOR USES EXPRESSLY GRANTED IN WRITING INFORMATION DISCLOSED HEREON IS CONFIDENTIAL AND ALL RIGHTS PATENT AND OTHERWISE ARE RESERVED BY SOUTHCO, INC.

FORMAT 2-85