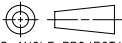


southco		PROPRIETARY ITEM - EXCEPT FOR USES EXPRESSLY GRANTED IN WRITING INFORMATION DISCLOSED HEREON IS CONFIDENTIAL AND ALL RIGHTS PATENT AND OTHERWISE ARE RESERVED BY SOUTHCO, INC.		CAM LOCK, FLAT KEY STYLE, SEALED				DATE	DRAWN	CHKD	SCALE	DRAWING NUMBER
								25SEP2007	KPL	MJS	1:1	J-CM-99-201-M
REV	DATE	DRAWN/CHKD	DESCRIPTION									INCHES
												ALL DIMENSIONS WITHOUT TOLERANCES ARE FOR REFERENCE ONLY.
												 THIRD ANGLE PROJECTION
												B PAPER SIZE

NOTES:

A. FOR LATCH ASSEMBLY PART NUMBERS, MATERIAL AND FINISH SEE DRAWING J-CM-99-201.

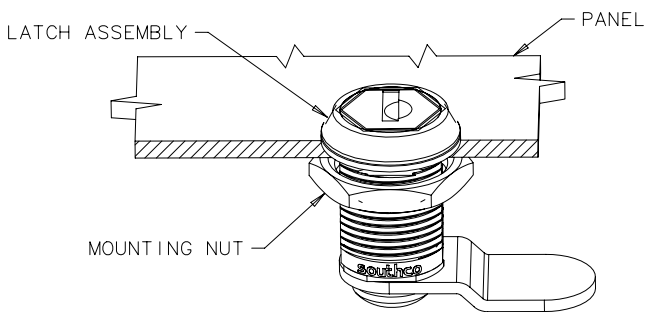
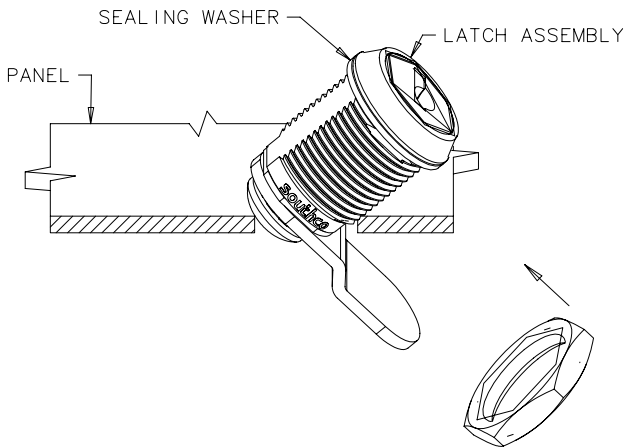
B. FOR CAM PART NUMBERS SEE DRAWING J-CM-C.

SHEET 2 OF 2

INSTALLATION METHOD 1

USE WHEN CAM IS ASSEMBLED TO LATCH ASSEMBLY.

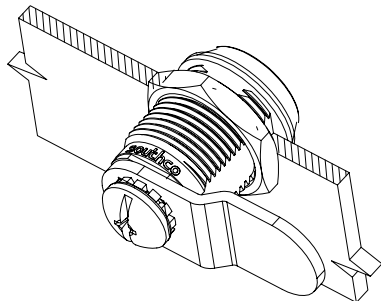
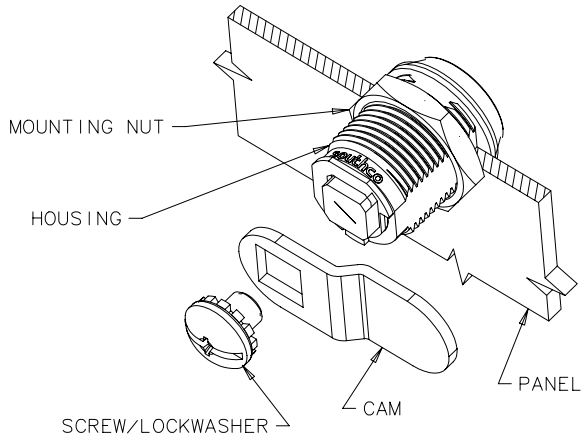
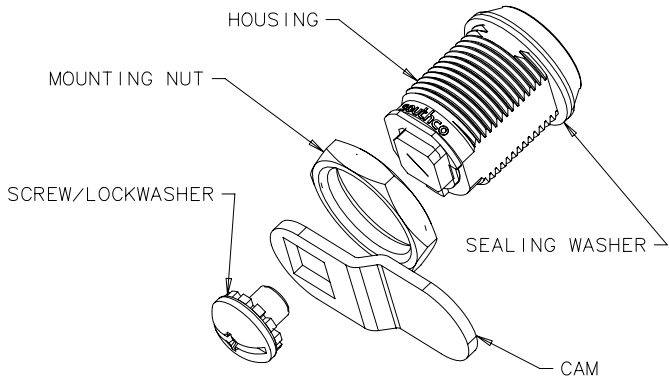
1. PLACE SEALING WASHER ONTO LATCH HOUSING.
2. TILT LATCH THROUGH MOUNTING HOLE.
3. INSTALL MOUNTING NUT AND TIGHTEN TO 5 N·m (44 IN-LBS) MAX.



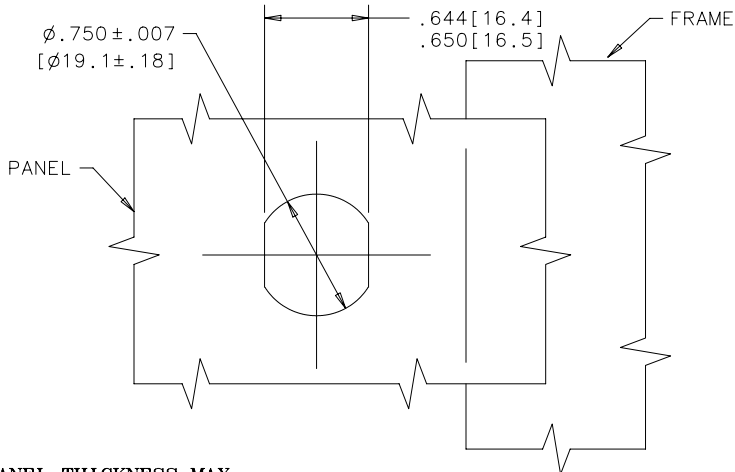
INSTALLATION METHOD 2

SUGGESTED IF CAM ORDERED SEPARATELY OR IF PART CAN NOT BE INSTALLED AS AN ASSEMBLY.

1. REMOVE SCREW FROM HOUSING SUBASSEMBLY.
2. PLACE SEALING WASHER ONTO LATCH HOUSING AND PLACE LATCH THROUGH MOUNTING HOLE.
3. INSTALL MOUNTING NUT AND TIGHTEN TO 5 N·m (44 IN-LBS) MAX.
4. INSTALL CAM TO LATCH ASSEMBLY. REFER TO J-CM-2 FOR CAM ROTATION ILLUSTRATIONS FOR PROPER ORIENTATION.
5. INSTALL SCREW. TIGHTEN TO 4 N·m (35.4 IN-LBS) MAX WITH A No. 2 PHILLIPS DRIVER.



PANEL PREPARATION



PANEL THICKNESS MAX

(SEE TABLE BELOW)

HOUSING LENGTH	MAX PANEL THICKNESS
1=.625[15.9]	.281[7.1]
2=.875[22.2]	.531[13.5]

