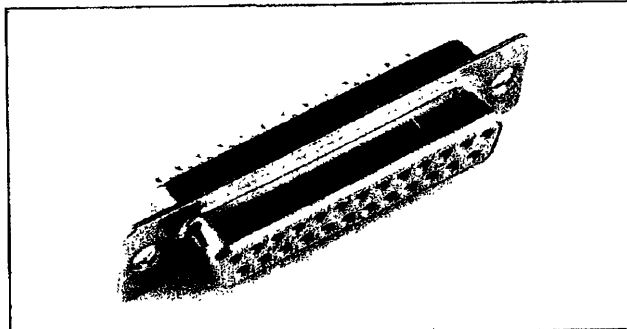




Edition 11/98

# BASIC D



- Conforms to BS 9523 F0010 and F0018
- Standards RS232 interface
- Bright tin finish & grounding indents available for EMI/RFI shielding
- Meets dimensional requirements of MIL-C-24308, BS9523 F0018 & DIN 41652
- UL 94V-0 rated insulators
- Compatible with all other D Subminiatures

## Technical Data

<b>Termination Options</b>	Solder Bucket, Flow Solder Straight & 90° Wire ware	<b>Proof Voltage</b>	2.5 Kv d.c. or a.c. peak
<b>Number of Contacts</b>	9 15 25 37 50	<b>Working Voltage</b>	750V d.c. or a.c. peak
<b>Maximum Insertion &amp; Extraction Force</b>	30 50 83 123 167N	<b>Contact Resistance</b>	5 x 10 <sup>-3</sup> Ω max
<b>Performance Level</b>	1, 2 or 3	<b>Insulation Resistance</b>	≥ 5 x 10 <sup>9</sup> Ω
<b>Wire Accommodation</b>	≤ 0.5 mm <sup>2</sup> (20AWG)	<b>Temperature Range</b>	-55° to +125°C
<b>Plug Contact Material</b>	Copper Alloy	<b>Insulator Materials</b>	GF Polyester. UL 94V-0 Rated
<b>Socket Contact Material</b>	Copper Alloy	<b>Shell Materials</b>	Steel - Zinc plated with yellow chromate passivation include bright tin finish
<b>Current rating</b>	5A		

## Technical Data

Series Prefix **D**

Shell Size **B**

Mounting Type **-**

Contact Arrangement **25**

Contact Type **P**

Termination Style

Shell Finish

Performance Level

**Series Prefix** D

**Shell Size** E, A, B, C or D

**Mounting Type**

- B** -4-40 rivnut for rear panel mounting
- P** -M3 rivnut for rear panel mounting
- D** -with female screw locks fitted
- E** -4-40 clinch-out for rear panel mounting with locking feature for high vibration applications
- F** -Float mount for rear panel mounting
- Y** -Universal float mount
- No designation** -∅ 3.05 mm mounting hole  
90° Flow Solder versions are not available with float mounts

**Contact Arrangement** 9, 15, 25, 37 or 50

**Contact Type** P or S

**Termination Style** 90° Flow Solder European Footprint

**1A0N** -without brackets

**1A1N** -with plastic brackets

**1A2N** -with plastic brackets and keeper moulding

**1A3N** -with metal mounting brackets\*

**1AEN** -with earthing straps on plastic brackets with keeper moulding\*

**1ASN** -with boardlock, earthing straps, plastic bracket and keeper moulding\*

**For reverse orientation of contacts relative to shell, replace N with R**

\*Please specify rivnuts or screw locks, mounting type B, P, or D (Rivnuts standard)

**Straight Flow Solder** OL2 -Termination 0.6mm, 5.3mm Long  
BL2 -As OL2 with vertical Board locks 4/40 threads

**Mini Wire Wrap** F179A -0.61mm square section pins for up to 3 wraps

**Solder Bucket** No designation required

**Shell Finish** T -Bright tin  
TI -Bright tin with grounding indents (plugs only)

**No designation** -Zinc plated with yellow chromate passivation.

**Performance Level** 2 -DIN Class 2  
1 -Exceeds DIN Class 2  
**No designation** -Performance level 3



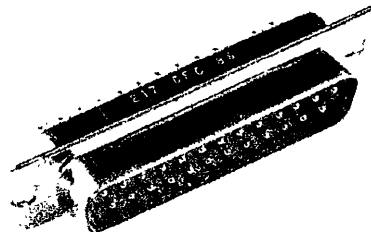
Edition 11/98

# BASIC D

## Best Sellers

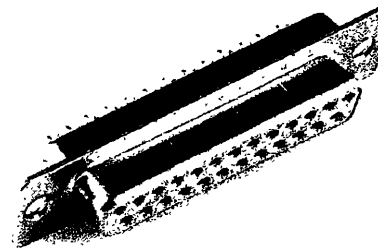
### Solder Bucket - Plug

Number of Contacts	Performance Level	Through Hole		Float Mount	Rear Panel Mount		
		Zinc Chromate Plated Shell	Tin Indent Plated Shell	Zinc Chromate Plated Shell	4-40 Rivnut Tin Indent Shell	M3 Rivnut Tin Indent Shell	
		9	1	3	DE-9P1	DE-9PT11	DEY-9P1
15	1	3	DE-9P	DE-9PT1	DEY-9P	DEB-9PT1	DEP-9PT1
			DA-15P1	DA-15PT11	DAY-15P1	DAB-15PT11	DAP-15PT11
25	1	3	DA-15P	DA-15PT1	DAY-15P	DAB-15PT1	DAP-15PT1
			DB-25P1	DB-25PT11	DBY-25P1	DBB-25PT11	DBP-25PT11
37	1	3	DB-25P	DB-25PT1	DBY-25P	DBB-25PT1	DBP-25PT1
			DC-37P1	DC-37PT11	DCY-37P1	DCB-37PT11	DCP-37PT11
50	1	3	DC-37P	DC-37PT1	DCY-37P	DCB-37PT1	DCP-37PT1
			DD-50P1	DD-50PT11	DDY-50P1	ddb-50PT11	DDP-50PT11
			DD-50P	DD-50PT1	DDY-50P	ddb-50PT1	DDP-50PT1



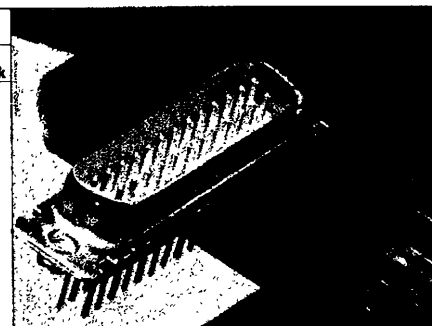
### Solder Bucket - Socket

Number of Contacts	Performance Level	Through Hole		Float Mount	Rear Panel Mount		
		Zinc Chromate Plated Shell	Tin Plated Shell	Zinc Chromate Plated Shell	4-40 Rivnut Tin Shell	M3 Rivnut Tin Shell	
9	1	3	DE-9S1	DE-9ST1	DEY-9S1	DEB-9ST1	DEP-9ST1
			DE-9S	DE-9ST	DEY-9S	DEB-9ST	DEP-9ST
15	1	3	DA-15S1	DA-15ST1	DAY-15S1	DAB-15ST1	DAP-15ST1
			DA-15S	DA-15ST	DAY-15S	DAB-15ST	DAP-15ST
25	1	3	DB-25S1	DB-25ST1	DBY-25S1	DBB-25ST1	DBP-25ST1
			DB-25S	DB-25ST	DBY-25S	DBB-25ST	DBP-25ST
37	1	3	DC-37S1	DC-37ST1	DCY-37S1	DCB-37ST1	DCP-37ST1
			DC-37S	DC-37ST	DCY-37S	DCB-37ST	DCP-37ST
50	1	3	DD-50S1	DD-50ST1	DDY-50S1	ddb-50ST1	DDP-50ST1
			DD-50S	DD-50ST	DDY-50S	ddb-50ST	DDP-50ST



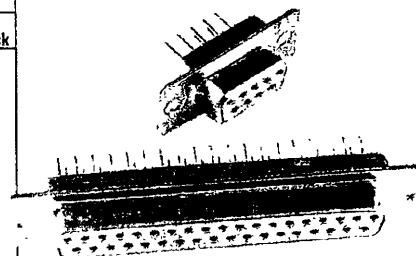
### Straight PCB Mount - Plug

Number of Contacts	Performance Level	Through Hole		4-40 thread Vertical BoardLock		
		Zinc Chromate Plated Shell	Tin Indent Plated Shell	Tin Indent Shell	Tin Indent Shell with female screwlock	
9	1	3	DE-9POL21	DE-9POL2T11	DE-9PBL2T11	DED-9PBL2T11
			DE-9POL2	DE-9POL2T1	DE-9PBL2T1	DED-9PBL2T1
15	1	3	DA-15POL21	DA-15POL2T11	DA-15PBL2T11	DAD-15PBL2T11
			DA-15POL2	DA-15POL2T1	DA-15PBL2T1	DAD-15PBL2T1
25	1	3	DB-25POL21	DB-25POL2T11	DB-25PBL2T11	DBD-25PBL2T11
			DB-25POL2	DB-25POL2T1	DB-25PBL2T1	DBD-25PBL2T1
37	1	3	DC-37POL21	DC-37POL2T11	DC-37PBL2T11	DCD-37PBL2T11
			DC-37POL2	DC-37POL2T1	DC-37PBL2T1	DCD-37PBL2T1
50	1	3	DD-50POL21	DD-50POL2T11	DD-50PBL2T11	DDD-50PBL2T11
			DD-50POL2	DD-50POL2T1	DD-50PBL2T1	DDD-50PBL2T1



### Straight PCB Mount - Socket

Number of Contacts	Performance Level	Through Hole		4-40 thread Vertical BoardLock		
		Zinc Chromate Plated Shell	Tin Indent Plated Shell	Tin Indent Shell	Tin Indent Shell with female screwlock	
9	1	3	DE-9SOL21	DE-9SOL2T1	DE-9SBL2T1	DED-9SBL2T1
			DE-9SOL2	DE-9SOL2T	DE-9SBL2T	DED-9SBL2T
15	1	3	DA-15SOL21	DA-15SOL2T1	DA-15SBL2T1	DAD-15SBL2T1
			DA-15SOL2	DA-15SOL2T	DA-15SBL2T	DAD-15SBL2T
25	1	3	DB-25SOL21	DB-25SOL2T1	DB-25SBL2T1	DBD-25SBL2T1
			DB-25SOL2	DB-25SOL2T	DB-25SBL2T	DBD-25SBL2T
37	1	3	DC-37SOL21	DC-37SOL2T1	DC-37SBL2T1	DCD-37SBL2T1
			DC-37SOL2	DC-37SOL2T	DC-37SBL2T	DCD-37SBL2T
50	1	3	DD-50SOL21	DD-50SOL2T1	DD-50SBL2T1	DDD-50SBL2T1
			DD-50SOL2	DD-50SOL2T	DD-50SBL2T	DDD-50SBL2T

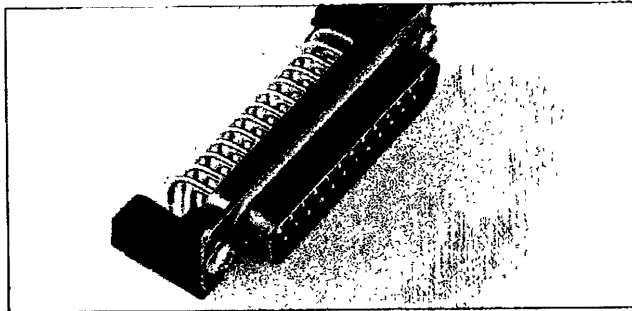
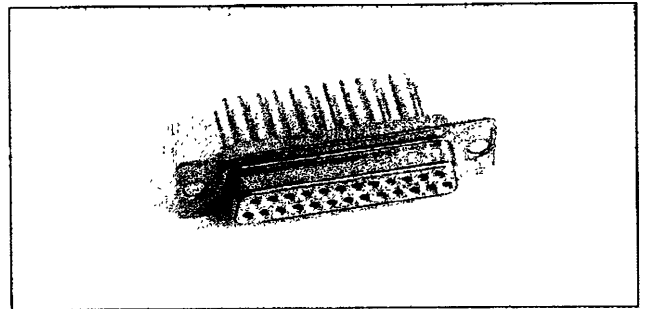




Edition 11/98

**Best Sellers****BASIC D****90° PCB - Plug**

Number of Contacts	Performance Level	Open Frame		Plastic Brackets		Keeper Mould	Snap In Boardlocks	
		Zinc Chromate Plated Shell	Tin Indent Plated Shell	Zinc Chromate Plated Shell	Tin Indent Plated Shell	Tin Indent Plated Shell	Tin Indent Shell 4-40 Rivnut	
9	1	3	DE-9P1A0N1	DE-9P1A0NT11	DE-9P1A1N1	DE-9P1A1NT11	DE-9P1A2NT11	DEB-9P1ASNT11
			DE-9P1A0N	DE-9P1A0NT1	DE-9P1A1N	DE-9P1A1NT1	DE-9P1A2NT1	DEB9P1ASNT1
15	1	3	DA-15P1A0N1	DA-15P1A0NT11	DA-15P1A1N1	DA-15P1A1NT11	DA-15P1A2NT11	DAB-15P1ASNT11
			DA-15P1A0N	DA-15P1A0NT1	DA-15P1A1N	DA-15P1A1NT1	DA-15P1A2NT1	DAB-15P1ASNT1
25	1	3	DB-25P1A0N1	DB-25P1A0NT11	DB-25P1A1N1	DB-25P1A1NT11	DB-25P1A2NT11	DBB-25P1ASNT11
			DB-25P1A0N	DB-25P1A0NT1	DB-25P1A1N	DB-25P1A1NT1	DB-25P1A2NT1	DBB-25P1ASNT1
37	1	3	DC-37P1A0N1	DC-37P1A0NT11	DC-37P1A1N1	DC-37P1A1NT11	DC-37P1A2NT11	DCB-37P1ASNT11
			DC-37P1A0N	DC-37P1A0NT1	DC-37P1A1N	DC-37P1A1NT1	DC-37P1A2NT1	DCB-37P1ASNT1
50	1	3					DD-50P1A2NT11	DDB-50P1ASNT11
							DD-50P1A2NT1	DDB-50P1ASNT1

**90° PCB - Mounting****Wire Wrap****90° PCB - Socket**

Number of Contacts	Performance Level	Open Frame		Plastic Brackets		Keeper Mould	Snap In Boardlocks	
		Zinc Chromate Plated Shell	Tin Indent Plated Shell	Zinc Chromate Plated Shell	Tin Indent Plated Shell	Tin Indent Plated Shell	Tin Indent Shell 4-40 Rivnut	
9	1	3	DE-9S1A0N1	DE-9S1A0NT1	DE-9S1A1N1	DE-9S1A1NT1	DE-9S1A2NT1	DEB-9S1ASNT1
			DE-9S1A0N	DE-9S1A0NT	DE-9S1A1N	DE-9S1A1NT	DE-9S1A2NT	DEB-9S1ASNT
15	1	3	DA-15S1A0N1	DA-15S1A0NT1	DA-15S1A1N1	DA-15S1A1NT1	DA-15S1A2NT1	DAB-15S1ASNT1
			DA-15S1A0N	DA-15S1A0NT	DA-15S1A1N	DA-15S1A1NT	DA-15S1A2NT	DAB-15S1ASNT
25	1	3	DB-25S1A0N1	DB-25S1A0NT1	DB-25S1A1N1	DB-25S1A1NT1	DB-25S1A2NT1	DBB-25S1ASNT1
			DB-25S1A0N	DB-25S1A0NT	DB-25S1A1N	DB-25S1A1NT	DB-25S1A2NT	DBB-25S1ASNT
37	1	3	DC-37S1A0N1	DC-37S1A0NT1	DC-37S1A1N1	DC-37S1A1NT1	DC-37S1A2NT1	DCB-37S1ASNT1
			DC-37S1A0N	DC-37S1A0NT	DC-37S1A1N	DC-37S1A1NT	DC-37S1A2NT	DCB-37S1ASNT
50	1	3					DD-50S1A2NT1	DDB-50S1ASNT1
							DD-50S1A2NT	DDB-50S1ASNT