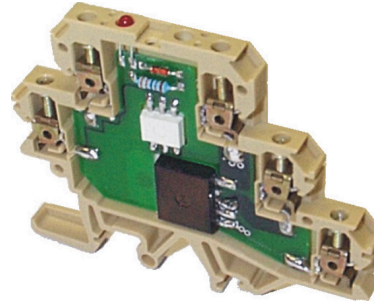


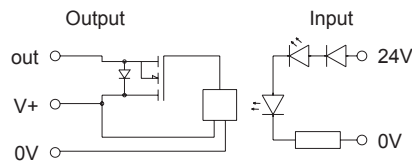
MC50 Solenoid Driver 10A

Features

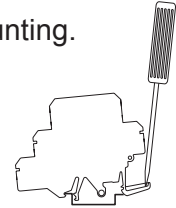
- 10A @ 5-34Vdc inductive switch
- High Side High Current Power Switch
- Ultra compact 6mm wide 'Combifoot' housing suits TS32 & TS35
- 4000Vrms isolation
- LED relay state indication
- Reverse polarity diode protection
- Input diode protection
- Load EMF protected



Circuit diagram



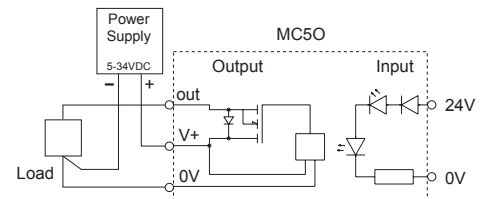
Mounting.



Technical Data

Input	
Input Voltage Range	10.5 to 28Vdc
Operating Current	5.0mA @ 24Vdc
Output	
Type	High Side MOSFET Switch
Output Resistance (on state)	Less than 10mΩ
Nominal Switching Voltage	5 to 34Vdc
Maximum Continuous Current	10A inductive
Use with Fuse/Circuit Breaker (recommended)	15A (65V) Slow Blow, breaking capacity 150A min
Operate time (at nom. voltage)	1mS approx.
Release time (at nom. voltage)	1mS max.
Max. operating speed (50% mark space ratio)	100Hz (6000 operations per minute)
Isolation	
Surge Strength	4000V
General	
Terminal width	6mm
Width across rail	76mm
Height on rail	TS32 68mm TS35 x 7.5 63mm TS35 x 15 71mm
Operating temperature range	-40°C to +60°C
Conductor size	Solid 0.5 to 4.0mm ² Flexible 0.5 to 2.5mm ²
EMC / LVD	EN50081-1, EN50082-1 / EN61010-1

Installation



General

Warning: to be installed/maintained by qualified personnel as per instructions, or module safety may be compromised.

Design for IEC664 Installation Category II use.

Cleaning

Wipe only with a damp cloth (remove power before cleaning).

Location

To be installed in a metal enclosure.

Ordering Information

Solenoid Driver 5-34 V, 10A		7901690001
Accessories		
End Plate	AP	7940005681
End Brackets	EW(TS35) EWK(TS32)	0383560000 0206160000
Cross Connection Parts		
Insulated	2 pole	0482700000
	3 pole	0482800000
	4 pole	0482900000
Uninsulated	75 pole straight	0535200000
	75 pole angled	0526400000
Mounting rail		
TS32		0122800000
TS35 x 7.5		0383400000
TS35 x 15		0236400000