

Tactile switch with Protective Cover for increased security

- ROHS Compliant
- Protective cover prevents switch operation when cover is closed
- Spring operated cover returns to close position



Ordering Information

■ List of Models

Contact form	Model name
Tactile Switch with protective cover	B3F-8000

Specifications

■ Rating and Characteristics

Switching capacity	1 to 50mA, 5 to 24VDC (resistive load)
Ambient temperature	-25°C to 70°C at 60% max. (with no icing)
Ambient humidity	35 to 85% (for +5 °C to 35 °C)
Contact form	SPST-NO
Contact resistance	100 mΩ max. (initial value) (rated: 1mA, 5VDC)
Insulation resistance	100 MΩ min. (at 250 VDC)
Dielectric strength	500 VAC, 50/60 Hz for 1 min
Bouncing time	5ms Max.
Vibration resistance	Malfunction: 10 to 55 Hz, 1.5-mm double amplitude
Shock resistance	Destruction: 1,000 m/s ² max. Malfunction: 100 m/s ² max.
Life expectancy	Switch: 3,000,000 operations min. Cover: 1000,000 operations min.

Note: 1.The data given above are initial values.

■ Operating Characteristics

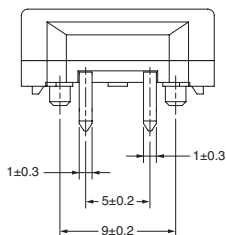
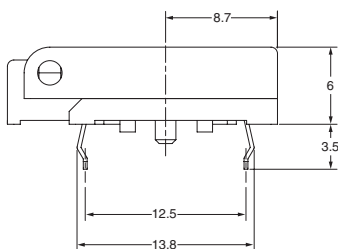
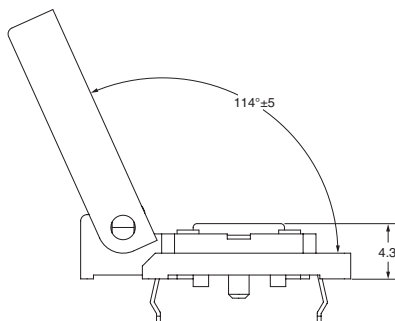
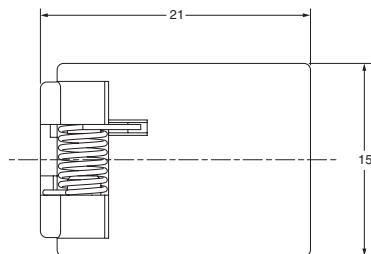
Operating force (OF)	1.27 ±0.49N
Release force (RF)	0.29N Min.
Pretravel (PT)	0.3 +0.2/-0.1 mm

Dimensions

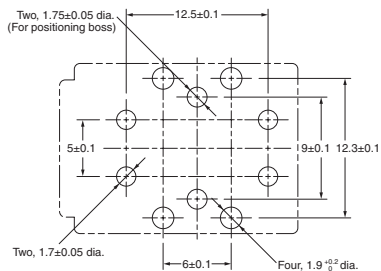
■ Dimension and Operating Characteristics

- Note:** 1. All units are in millimetres otherwise indicated
2. Unless otherwise specified, a tolerance of $\pm 0.4\text{mm}$ applied to all dimensions B3F-8000

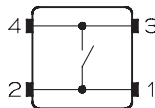
B3F-8000



PCB mounting (TOP View)
Single-sided PCB, $t=1.6$



Terminal Arrangement
/Internal Connections
(Top View)



Omron Electronic Components Europe BV reserves the right to make any changes to the specifications of the products described at its sole discretion and without prior notice.

For full terms and conditions, visit our website www.omroncomponents.com and click on legal notices.

ALL DIMENSIONS SHOWN ARE IN MILLIMETRES.

To convert millimetres into inches, multiply by 0.03937. To convert grams into ounces, multiply by 0.03527.