

FEATHER KEYS

A range of good quality steel feather keys manufactured to DIN 6885.

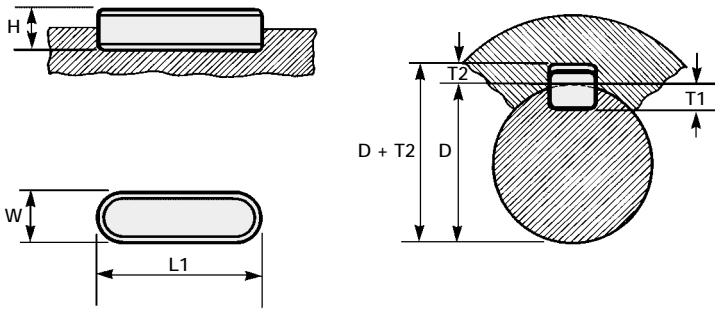
Important dimensions to be considered when specifying feather keys are T1 and D + T2.

Dimension W is toleranced h9.

Also available in stainless steel to special order.



Order Code	W × H	T1	T2	L1
364.0303.012	3 × 3	1.8	1.4	12
364.0303.015	3 × 3	1.8	1.4	15
364.0303.020	3 × 3	1.8	1.4	20
364.0303.030	3 × 3	1.8	1.4	30
364.0303.040	3 × 3	1.8	1.4	40
364.0404.008	4 × 4	2.5	1.8	8
364.0404.010	4 × 4	2.5	1.8	10
364.0404.012	4 × 4	2.5	1.8	12
364.0404.015	4 × 4	2.5	1.8	15
364.0404.016	4 × 4	2.5	1.8	16
364.0404.020	4 × 4	2.5	1.8	20
364.0404.025	4 × 4	2.5	1.8	25
364.0505.010	5 × 5	3.0	2.3	10
364.0505.012	5 × 5	3.0	2.3	12
364.0505.014	5 × 5	3.0	2.3	14
364.0505.016	5 × 5	3.0	2.3	16
364.0505.018	5 × 5	3.0	2.3	18
364.0505.020	5 × 5	3.0	2.3	20
364.0505.025	5 × 5	3.0	2.3	25
364.0505.030	5 × 5	3.0	2.3	30
364.0505.035	5 × 5	3.0	2.3	35
364.0505.045	5 × 5	3.0	2.3	45
364.0505.050	5 × 5	3.0	2.3	50
364.0606.012	6 × 6	3.5	2.8	12
364.0606.014	6 × 6	3.5	2.8	14
364.0606.016	6 × 6	3.5	2.8	16
364.0606.018	6 × 6	3.5	2.8	18
364.0606.020	6 × 6	3.5	2.8	20
364.0606.025	6 × 6	3.5	2.8	25
364.0606.028	6 × 6	3.5	2.8	28
364.0606.030	6 × 6	3.5	2.8	30
364.0606.032	6 × 6	3.5	2.8	32
364.0606.035	6 × 6	3.5	2.8	35
364.0606.040	6 × 6	3.5	2.8	40
364.0606.045	6 × 6	3.5	2.8	45
364.0606.050	6 × 6	3.5	2.8	50



Order Code	W × H	T1	T2	L1
364.0807.018	8 × 7	4.0	3.3	18
364.0807.020	8 × 7	4.0	3.3	20
364.0807.022	8 × 7	4.0	3.3	22
364.0807.025	8 × 7	4.0	3.3	25
364.0807.030	8 × 7	4.0	3.3	30
364.0807.035	8 × 7	4.0	3.3	35
364.0807.040	8 × 7	4.0	3.3	40
364.0807.043	8 × 7	4.0	3.3	43
364.0807.045	8 × 7	4.0	3.3	45
364.0807.050	8 × 7	4.0	3.3	50
364.0807.110	8 × 7	4.0	3.3	110
364.1008.020	10 × 8	5.0	3.3	20
364.1008.028	10 × 8	5.0	3.3	28
364.1008.030	10 × 8	5.0	3.3	30
364.1008.035	10 × 8	5.0	3.3	35
364.1008.036	10 × 8	5.0	3.3	36
364.1008.040	10 × 8	5.0	3.3	40
364.1008.043	10 × 8	5.0	3.3	43
364.1008.045	10 × 8	5.0	3.3	45
364.1008.050	10 × 8	5.0	3.3	50
364.1208.036	12 × 8	5.0	3.3	36
364.1208.040	12 × 8	5.0	3.3	40
364.1208.043	12 × 8	5.0	3.3	43
364.1208.045	12 × 8	5.0	3.3	45
364.1208.050	12 × 8	5.0	3.3	50
364.1208.056	12 × 8	5.0	3.3	56
364.1208.060	12 × 8	5.0	3.3	60
364.1208.100	12 × 8	5.0	3.3	100
364.1409.050	14 × 9	5.5	3.8	50
364.1409.070	14 × 9	5.5	3.8	70
364.1409.100	14 × 9	5.5	3.8	100

FEATHER KEYS

Feather Key Kit Order Code : **364P0000**

- Maintenance kit contains 13 commonly used key sizes.

Dimensions W × H × L	Feather Key Order Code	Qty
3 × 3 × 12	364.0303.012	20
3 × 3 × 20	364.0303.020	20
4 × 4 × 15	364.0404.015	20
4 × 4 × 20	364.0404.020	20
5 × 5 × 12	364.0505.012	15
5 × 5 × 20	364.0505.020	15
5 × 5 × 25	364.0505.025	15
5 × 5 × 30	364.0505.030	15
6 × 6 × 20	364.0606.020	10
6 × 6 × 35	364.0606.035	10
8 × 7 × 40	364.0807.040	10
10 × 8 × 35	364.1008.035	5
10 × 8 × 40	364.1008.040	5



Key Steel - Material : Steel C 45K

- Available in standard lengths of 1M.

Order Code	b _{h9}	h _{h11}
364.902.02	2	2
364.903.03	3	3
364.904.04	4	4
364.909.05	5	5
364.906.06	6	6
364.908.07	8	7
364.908.08	8	8
364.910.08	10	8
364.910.10	10	10
364.912.08	12	8
364.912.12	12	12
364.914.09	14	9

