

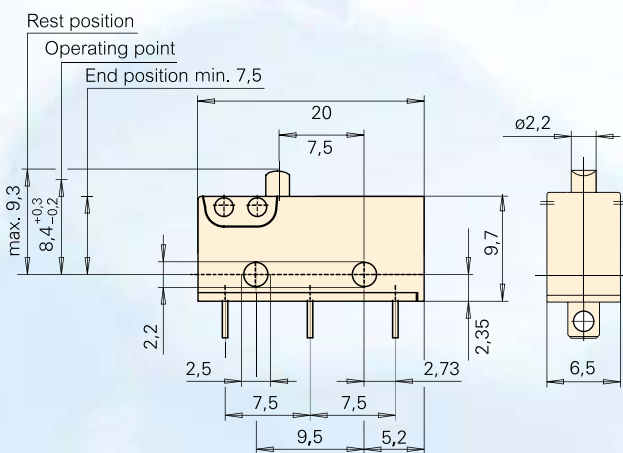
# DZ subminiature switch

## Features




- Positive break action on NC contact
- Precision switch with high switch accuracy
- Various auxiliary actuators (can also be retrofitted) two mounting positions
- Various terminal types available



## Dimensions in mm



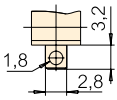
## Technical specifications

|  |   |
|--|---|
| Contact configuration                  | S.P.D.T., S.P.S.T. - N.C.   |
| Contact gap                            | < 3 mm ( $\mu$ )  |
| Switching voltage                      | 250 V AC  |
| Switched current                       | 3 (3) A   |
| Operating force                        | 220 cN without auxiliary actuator   |
| Total travel                           | 1,6 mm  |
| Mechanical life                        | Min. $1 \times 10^6$ operations   |
| Electrical life                        | 5E4   |
| Ambient temperature                    | -20 to +85 °C   |
| Ambient temperature                    | PTI 250   |
| Materials                              |   |
| Base/Cover                             | PET (UL 94 V-0)   |
| Actuator                               | POM (UL 94 HB)  |
| Positive break lever                   | LCP (UL 94 V-0)   |
| Contact material                       | AgSnO   |
| Terminals                              | CuZn (silver-plated)  |
| Auxiliary actuator                     | Stainless steel   |
| Approvals                              |    |
| Degree of protection (switch interior) | IP40  |

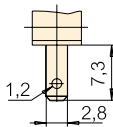
For detailed information and the layout of the details described above, please do not hesitate to ask for our technical specifications and drawing.

## Terminals

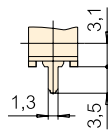
Solder terminal  
short



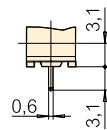
Q.C. terminal  
2.8 x 0.5



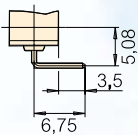
PCB terminal  
1.3 x 0.5



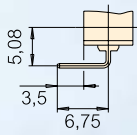
PCB terminal  
0.6 x 0.5



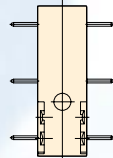
PCB terminal  
0.6 x 0.5 RH-side  
w/o location pins



PCB terminal  
0.6 x 0.5 LH-side  
w/o location pins

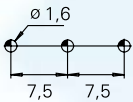


Side definition  
side left or side right

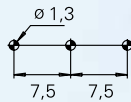


## Drilling patterns

PCB terminals underside  
1.3 x 0.5 mm



PCB terminals underside and lateral  
0.6 x 0.5 mm



## Electrical rating and operating life (2)

| Electrical rating according to<br>EN 61058 | UL 1054          | Electrical life (Operations)<br>acc. to EN |            | Mechanical life     | Max. operating<br>force (cN) | Code |
|--|------------------|--|------------|---------------------|------------------------------|------|
|  |                  | acc. to EN                                 | acc. to UL |                     |                              |      |
| 3 (3) A 250 V AC                           | 5 A 125–250 V AC | 50.000                                     | 6.000      | 1 x 10 <sup>6</sup> | 220                          | 1    |

## Contact configuration (3)

| Contact configuration | Code |
|-----------------------|------|
| S.P.S.T. - N.C.       | F    |
| S.P.D.T.              | G    |

## Terminals (4)

| Type of terminal                        | Code |
|---|------|
| Q.C. terminal 2,8 x 0,5 mm, straight    | B1   |
| Solder terminal, short                  | A1   |
| PCB terminal 1,3 x 0,5, straight        | C1   |
| PCB terminal 0,6 x 0,5, straight        | D1   |
| PCB terminal 0,6 x 0,5, right-hand side | D4   |
| PCB terminal 0,6 x 0,5, left-hand side  | D5   |

## Auxiliary actuator options (5)

| Model                      | Code            |
|----------------------------|-----------------|
| Without auxiliary actuator | Radius shape BA |

Other options on request.