

Microminiature Slide Switches

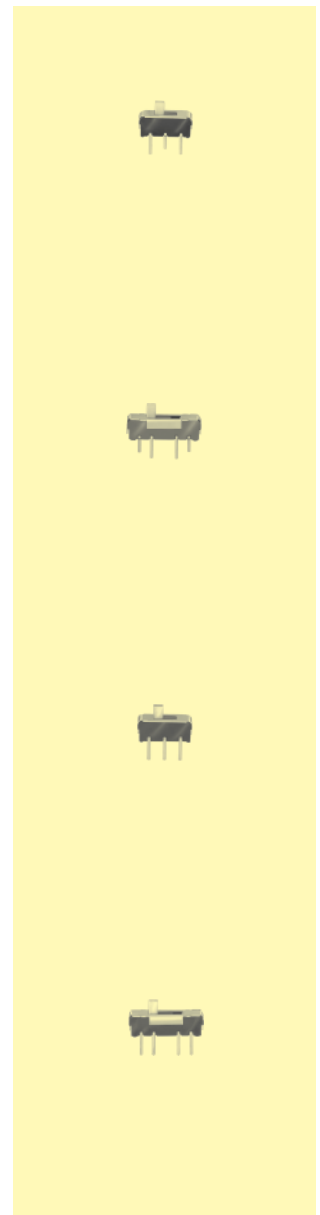


Specifications:

Contact rating:	12 V DC, 200 mA
Contact resistance:	< 50 mΩ
Insulation resistance:	> 100 MΩ at 500 V DC
Dielectric strength:	500 V, 50 Hz for the duration of 1 minute
Operating temperature:	- 10° to + 60° C
Mechanical life:	minimum 5000 operations
Contacts:	phosphor bronze, silver-plated
Terminals:	brass silver-plated
Contact timing:	non-shorting
Soldering conditions:	auto-soldering – max.: 3 sec ± 0,5 sec, 230° C ± 5° C

Models: Switching functions

MMP 121	on on			
MMP 131	on on on			
MMP 221	on on			
MMP 231	on on on			



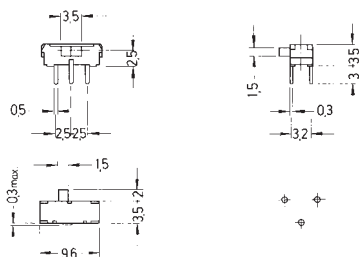


Microminiature Slide Switches

Models: Switching functions

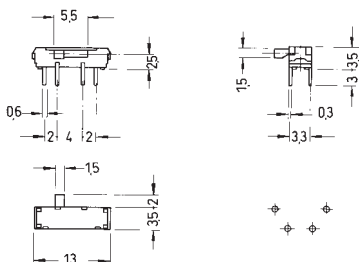
MMP 121 – R

on on



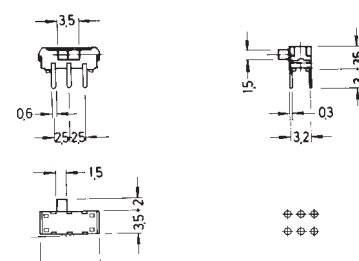
MMP 131 – R

on on on



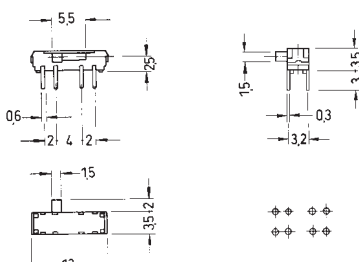
MMP 221 – R

on on



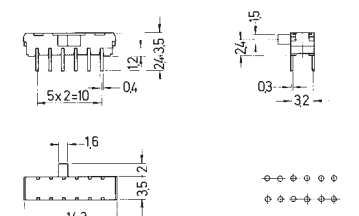
MMP 231 – R

on on on



MMP 421 – R

on on



4



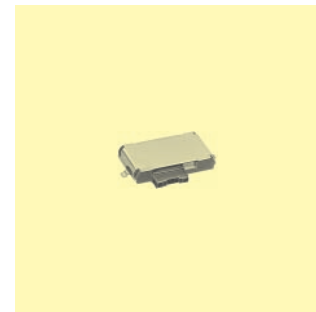
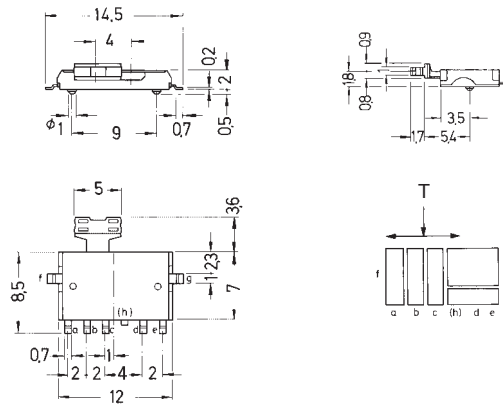
Microminiature Slide Switches for SMT

Specifications:

Contact rating:	12 V DC, 200 mA / 4 V DC, 300 mA
Contact resistance:	< 70 mΩ
Insulation resistance:	> 100 MΩ at 100 V DC
Dielectric strength:	500 V, 50 Hz for the duration of 1 minute
Operating temperature:	- 10° to + 60° C
Mechanical life:	minimum 10 000 operations
Contacts:	phosphor bronze, gold-plated
Terminals:	brass, gold-plated
Contact timing:	non-shorting

Models:

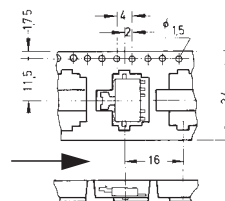
MMSP 132 on on on
with pushbutton function



4

Packaging:

1000 pcs/reel



Ø 330 mm

Soldering conditions:

reflow-soldering – max.: 60 sec, 260° C ± 2° C

Minimum quantity 1 reel

Microminiature Slide Switches for SMT

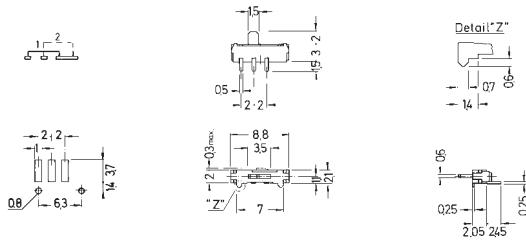


Specifications:

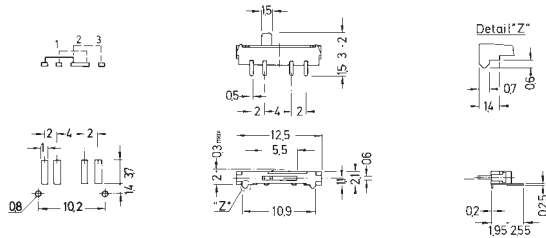
Contact rating:	12 V DC, 200 mA
Contact resistance:	< 50 mΩ
Insulation resistance:	> 100 MΩ at 500 V DC
Dielectric strength:	500 V, 50 Hz for the duration of 1 minute
Operating temperature:	- 10° to + 60° C
Storage temperature:	- 20° bis + 70° C
Mechanical life:	minimum 5000 operations
Contacts:	phosphor bronze, silver-plated
Terminals:	brass, silver-plated
Contact timing:	non-shorting
Slide colour:	white

Models: Switching functions

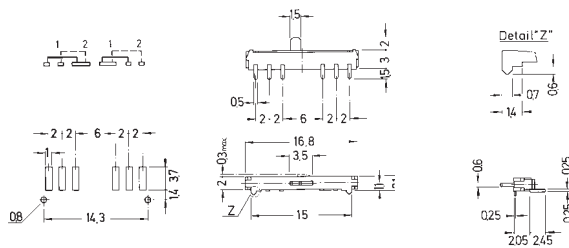
MMS 124 on on



MMS 134 on on on

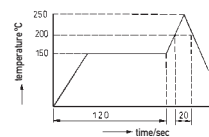


MMS 224 on on



Soldering conditions: reflow-soldering – max.: 20 sec, 200° C
peak temperature: 250° C

Packaging: cardboard boxes, on tapes on request





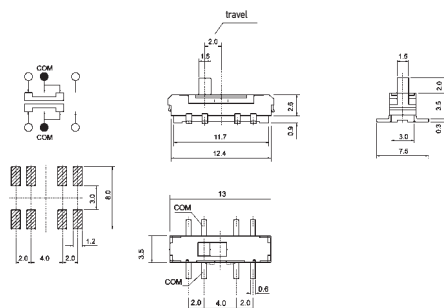
Microminiature Slide Switches for SMT

Specifications:

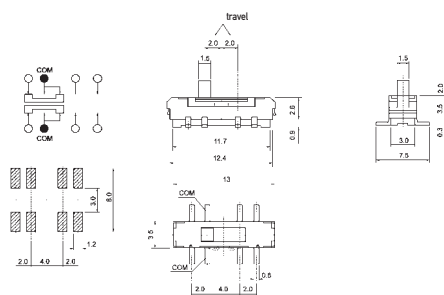
Contact rating:	12 V DC, 200 mA / 6 V DC, 300 mA
Contact resistance:	< 70 mΩ
Insulation resistance:	> 100 MΩ at 500 V DC
Dielectric strength:	500 V, 50 Hz for the duration of 1 minute
Operating temperature:	- 10° to + 60° C
Mechanical life:	minimum 10 000 operations
Contacts/Terminals:	copper alloy, silver-plated
Contact timing:	non-shorting
Slide colour:	white

Models: Switching functions

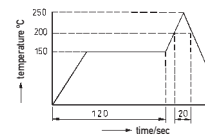
MMS 228 T on on



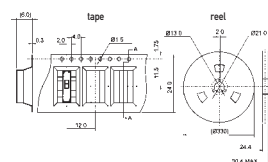
MMS 238 T on on on



Soldering conditions: reflow-soldering – max.: 20 sec, 200° C
 peak temperature: 250° C



Packaging: on tapes, 900 pieces / tape



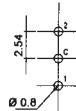
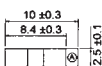
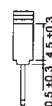
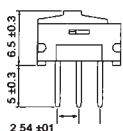
Microminiature Slide Switches

Specifications:

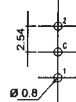
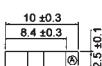
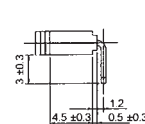
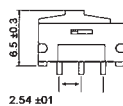
Contact rating:	0,2A, 24V DC / 0,5A, 12V DC
Contact resistance:	< 30 mΩ
Insulation resistance:	> 1000 MΩ at 500 V DC
Dielectric strength:	500 V, 50 Hz for the duration of 1 minute
Operating temperature:	- 40° to + 85° C
Mechanical life:	minimum 10 000 operations
Contacts:	phosphor bronze, gold-plated
Terminals:	brass, gold-plated
Contact timing:	non-shorting
Slide colour:	white
Soldering conditions:	auto-soldering – max.: 3 sec ± 0,5 sec, 260° C ± 5° C

Models: Switching functions

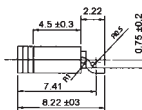
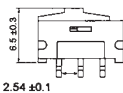
MMP 1010 D on on



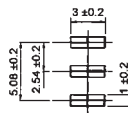
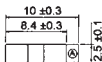
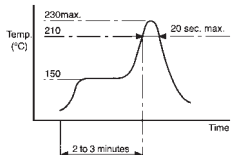
MMP 1010 D-RA on on



MMS 1010 D-R on on



Soldering profile MMS 1010 D-R





Microminiature Slide Switches

Specifications:

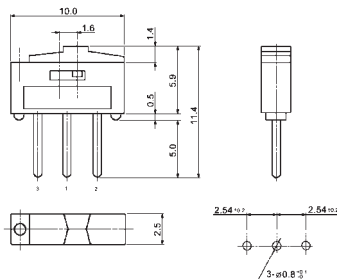
Contact rating:	24V \approx , 0,3A / 12V \approx , 0,5A
Contact resistance:	< 50 m Ω
Insulation resistance:	> 500 M Ω at 500 V-
Dielectric strength:	500 V for the duration of 1 minute
Operating temperature:	-25° bis + 80° C
Mechanical life:	minimum 10 000 operations
Contacts:	brass, gold-plated
Terminals	brass, gold-plated
Case:	PA
Soldering conditions:	auto-soldering – max.: 5 sec \pm 0,5 sec, 270° C \pm 5° C

Models

Switching functions

MMP 1010 D – 1

on on



MMP 1010 D-RA – 1

on on

