

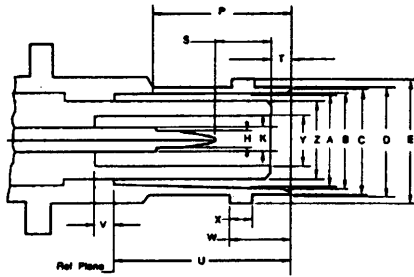
HIGH VOLTAGE



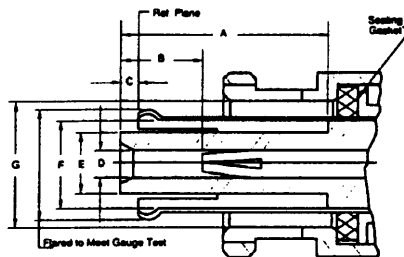
SHV / MHV / 10 KV / 20 KV DESCRIPTION/SPECIFICATIONS

SHV

JACK



PLUG

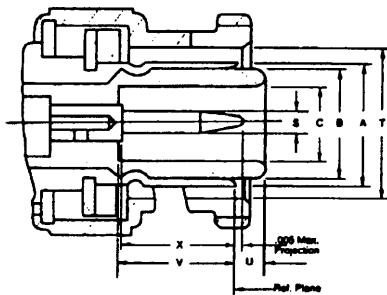


BHV — Jack

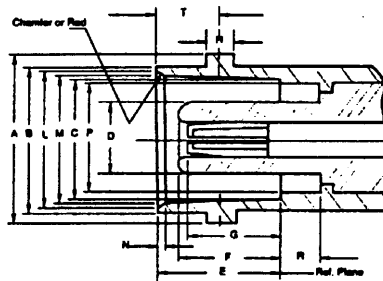
Dim Ltr	Inches		Millimeters	
	Min	Max	Min	Max
A	.318	.381	8.10	6.15
B	.325	.333	8.23	8.48
C	.347	.357	8.81	9.07
D	.378	.382	9.60	9.70
E	.432	.435	10.97	11.07
H	.052	.054	1.32	1.37
K	.081	.083	2.06	2.11
P	.427			
S	.188	.208	4.78	5.28
T	.061	.079	1.35	1.98
U	.626	.830	15.90	16.00
V	.064	.085	1.83	2.18
W	.204	.208	5.18	5.08
X	.075	.081	1.90	2.08
Y	.180	.198	4.83	4.98
Z		.250		8.80

MHV

PLUG



JACK

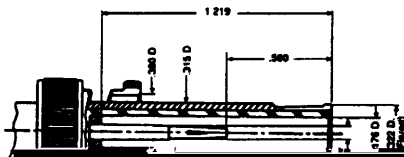


SHV — Plug

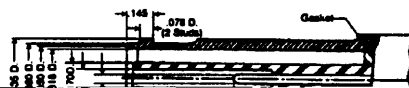
Dim Ltr	Inches		Millimeters	
	Min	Max	Min	Max
A	.626	.832	15.95	15.05
B	.238	.862	8.05	8.28
C	.048	.064	1.17	1.53
D	.052		2.08	
E	.180	.185	4.57	4.72
F	.264		6.71	
G	.385	.390	9.78	9.91

10 KV

PLUG



JACK



MHV — Plug

Dim Ltr	Inches (mm)	
	Minimum	Maximum
A	Gauge Test	
B	.278 (7.08)	.282 (7.16)
C	.180 (4.33)	.194 (4.83)
S	.082 (1.32)	.054 (1.37)
T	.085 (9.78)	.380 (9.91)
U		.086 (2.18)
V	.302 (7.67)	
Y	.200 (7.62)	

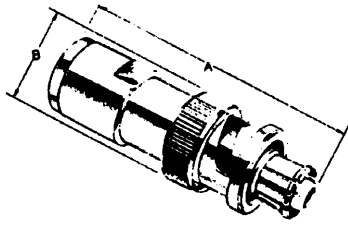


FIGURE 1

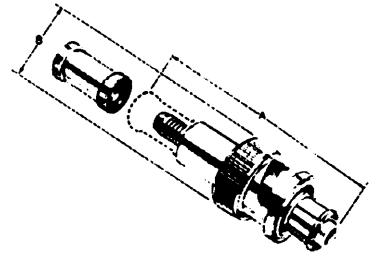


FIGURE 2

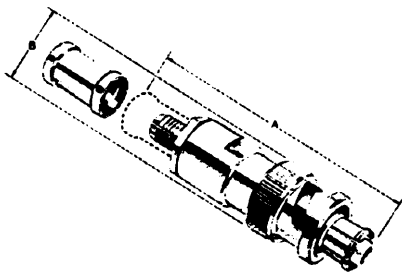


FIGURE 3

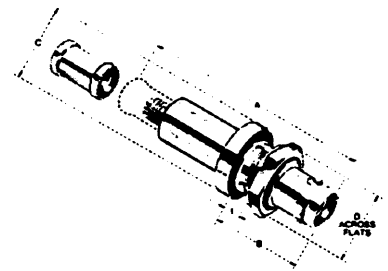
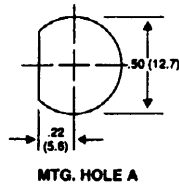


FIGURE 4



SHV

PLUGS – CONVENTIONAL CONSTRUCTION

KINGS PART NUMBER	DIMENSIONS	CABLING
-------------------	------------	---------