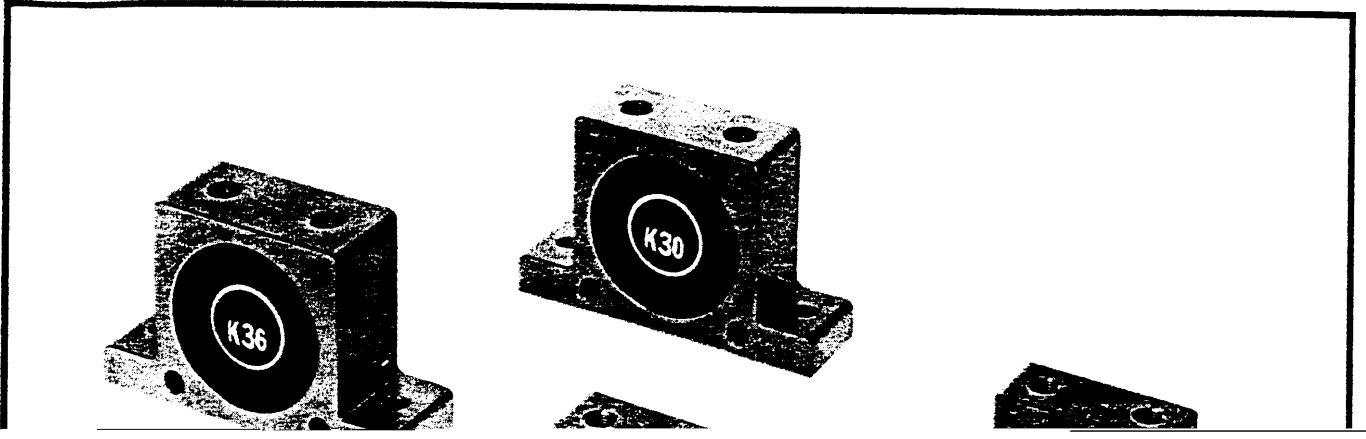
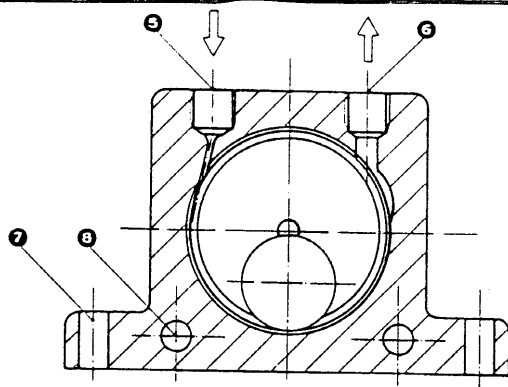
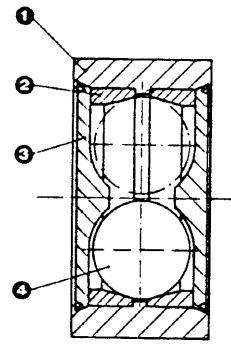


713 5701





- 1. Extruded aluminium alloy body
- 2. Hardened ground steel alloy races
- 3. Nylon endplates
- 4. Hardened lapped ball
- 5. Air inlet
- 6. Air exhaust
- 7. Base mounting holes
- 8. Lateral mounting



K-8 to K-36

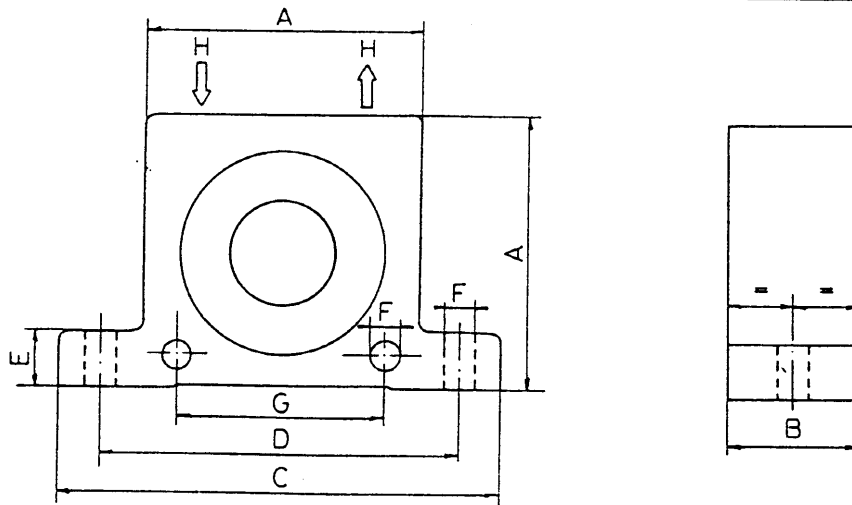
Standard Units
with Nylon endplates
Maximum Temperature 100°C = 212°

K-20HT to K-36 HT

Special Units
with Aluminium endplates
Maximum Temperature 150°C = 300°F

PERFORMANCE DATA

Type	Frequency V.P.M.			Centrifugal force						Air consumption/Minute					
	2 29 Bar PSI	4 58 Bar PSI	6 87 Bar PSI	2Bar N	29PSI LBS	4Bar N	58PSI LBS	6Bar N	87PSI LBS	2Bar Litr	29PSI CF	4Bar Litr	58PSI CF	6Bar Litr	87PSI CF
K- 8	24,500	31,000	35,000	180	40	290	52	370	83	83	2.9	145	5.1	195	6.9
K-10	21,600	26,800	30,000	210	47	320	72	400	90	92	3.2	150	5.3	200	7.1
K-13	16,000	20,800	23,600	390	88	650	146	850	191	94	3.3	158	5.6	225	7.9
K-16	14,300	17,600	20,200	540	122	820	184	1,090	245	122	4.3	200	7.1	280	9.9
K-20	10,700	14,200	16,000	760	171	1,340	302	1,700	382	130	4.6	230	8.1	340	12.0
K-25	10,100	13,200	14,500	1,180	265	2,000	450	2,420	545	160	5.6	290	10.2	425	15.0
K-30	7,600	10,000	11,000	1,530	344	2,660	598	3,210	722	215	7.6	375	13.2	570	20.0
K-36	7,500	9,300	10,300	2,340	526	3,590	808	4,400	990	260	9.2	475	16.8	675	24.0



DIMENSIONS

Type	A		B		C		D		E		F		G		H Thread BSP	Weight	
	mm	inch	mm	inch	mm	inch	mm	inch	mm	inch	mm	inch	mm	inch		kg	Lbs
K- 8	50	1.97	20	0.79	86	3.38	68	2.68	12	0.47	7	0.27	40	1.57	1/4"	.130	.29
K-10	50	1.97	20	0.79	86	3.38	68	2.68	12	0.47	7	0.27	40	1.57	1/4"	.130	.29
K-13	65	2.56	24	0.94	113	4.45	90	3.54	16	0.63	9	0.35	50	1.97	1/4"	.260	.57
K-16	65	2.56	27	1.06	113	4.45	90	3.54	16	0.63	9	0.35	50	1.97	1/4"	.300	.66
K-20	80	3.15	33	1.30	128	5.04	104	4.09	16	0.63	9	0.35	60	2.36	1/4"	.530	1.17
K-25	80	3.15	38	1.50	128	5.04	104	4.09	16	0.63	9	0.35	60	2.36	1/4"	.630	1.39
K-30	100	3.94	44	1.73	160	6.30	130	5.12	20	0.79	11	0.43	80	3.15	3/8"	1.130	2.49
K-36	100	3.94	50	1.97	160	6.30	130	5.12	20	0.79	11	0.43	80	3.15	3/8"	1.240	2.85