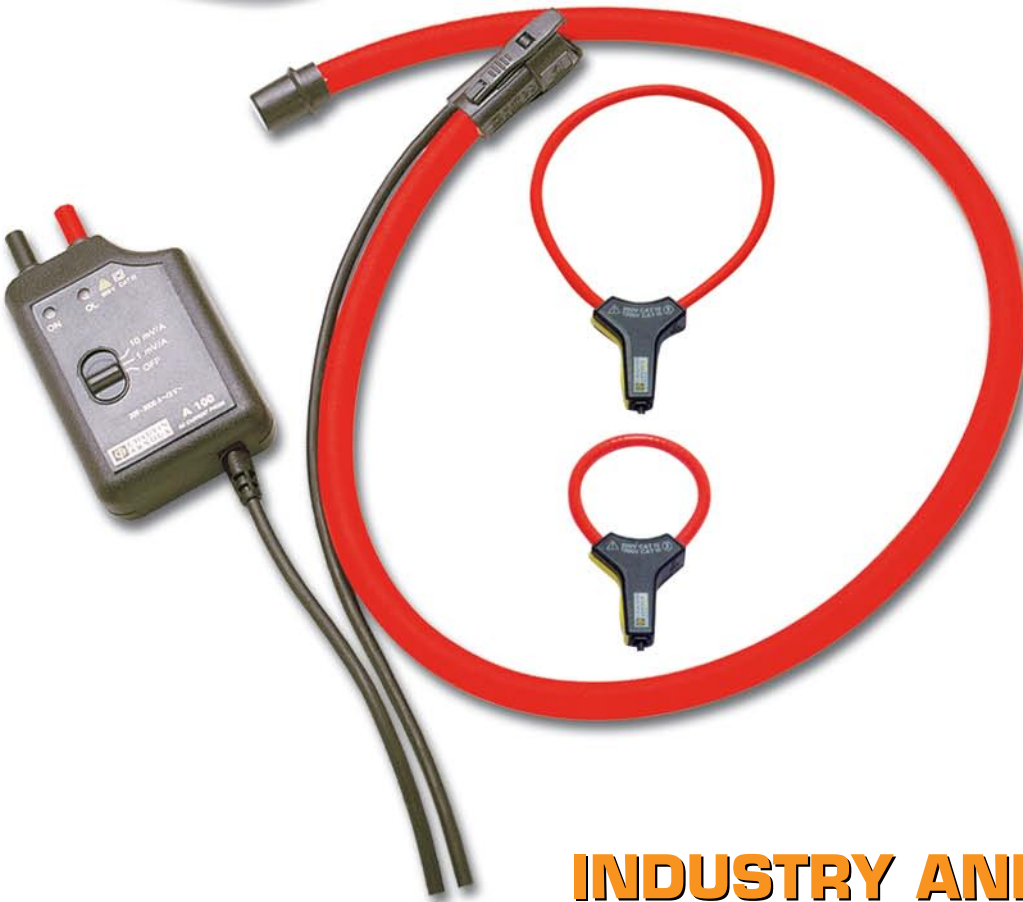
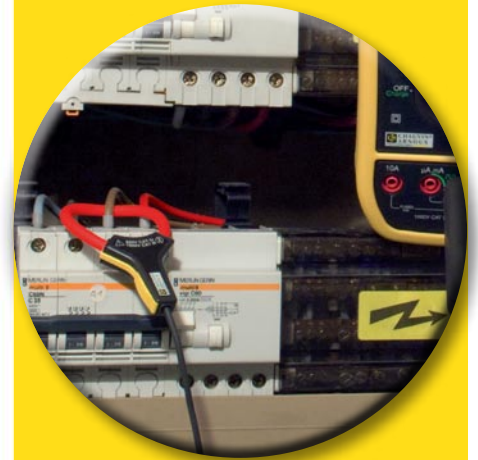


Flexibility for measuring intensity



- **Large measurement range from 0.5 A_{AC} to 10 kA_{AC}**
- **Excellent linearity, low phase shift**
- **600 V CAT IV or 1,000 V CAT III**
- **Flexible and lightweight**
- **Models for multimeters or oscilloscopes**

Flexible current sensors and probes



**INDUSTRY AND
TERTIARY SECTOR**

AmpFLEX™ & MiniFLEX

These compact, lightweight and ergonomic sensors of varying diameters are capable of clamping all types of conductors, whatever their number, dimensions or shape (bars, etc.). Due to their flexibility, they can be used in any location, however cramped. They are ideal for the requirements in both industry and the tertiary sector. Their quick and easy opening/closing system makes them simple to handle even when wearing safety gloves.

MA100 Series

The **MA100** sensors are fitted with two types of outputs: insulated Ø 4 mm banana plugs with 19 mm spacing or BNC output. These compact sensors are easy to set up in domestic or industrial electrical cabinets.



A100 Series

Specially designed for measuring AC currents from **0.5 A to 10 kA**, AmpFLEX™ sensors are equipped with outputs via insulated Ø 4 mm banana plugs with 19 mm spacing. They can be connected directly to all multimeters, wattmeters, etc.

The length of the sensors in this series, **up to 120 cm** as standard, means they can clamp large-section cables or several conductors simultaneously. They are ideal for measurement in switch cabinets or subtransmission cabinets.



MA200 Series

The **MA200** insulated current probes are equipped with a BNC output and can be connected to all types of oscilloscopes. They offer **high bandwidth** and are particularly suitable for viewing transient signals.

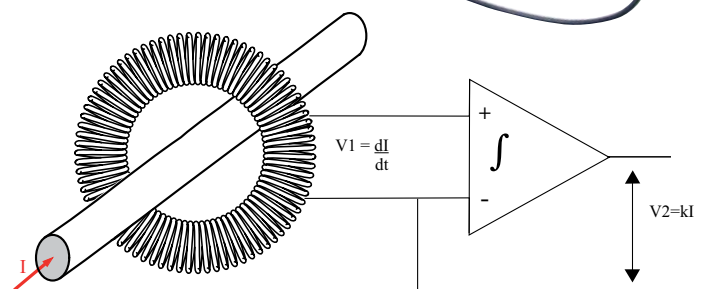
The **MA200** models can notably be used to display the control signals, the thyristor trigger current or the output signal of a power electronics power supply.



The AmpFLEX™ and MiniFlex sensors are based on the principle of the Rogowski coil, supported by electronics inside a casing.

Because they do not contain a magnetic circuit, they are particularly lightweight and flexible. This also means there is no saturation effect and thus no heating.

This specific feature ensures excellent linearity and a low phase shift.



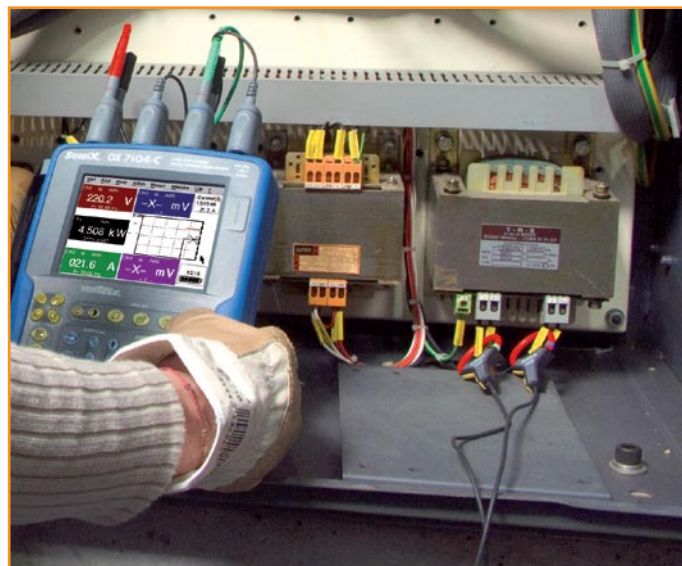
Rogowski coil

AmpFLEX™ and MiniFLEX sensors can be used in a very wide range of applications:

- power measurements
- measurements on switchboards
- measurements on thyristors
- switching measurements (disconnecting switch, etc.)
- display of control signals



MA100 and A100
These sensors are compatible with power analysers and allow users to choose the right sensor for their application, whether domestic or industrial, depending on the measurement range required, the cable diameter and the space available.



The MA200 Series is compatible with all types of oscilloscopes.



The sensors' flexibility is an advantage on industrial and domestic switchboards.

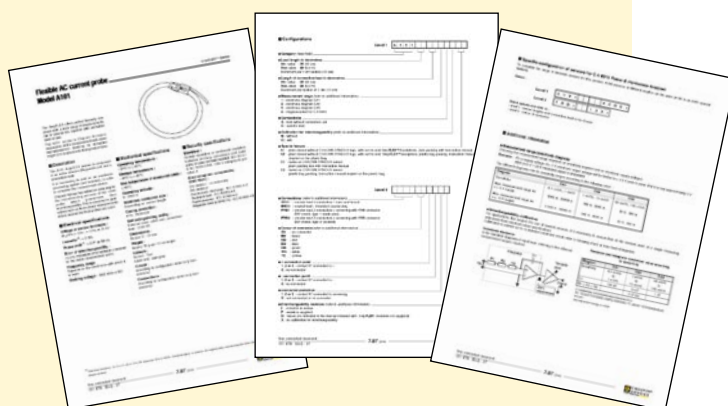
OUR EXPERTISE: «MADE-TO-MEASURE» INSTRUMENTS

Our experience means we are capable of designing, developing and manufacturing specific models to suit your requirements:

- sensitivity (mV/A)
- connection technology
- sensor lengths, etc.

The A101 and MA101 Series are dedicated sensors for professionals and measurement instrument manufacturers wishing to integrate this technology into their assemblies or sub-assemblies.

Contact us



For multimeters, wattmeters, loggers, etc.

MA100	30 A / 300 A	300 A / 3,000 A	300 A / 3,000 A
Sensor length	170 mm	250 mm	350 mm
Clamping diameter	Ø 45 mm	Ø 70 mm	Ø 100 mm
I/O ratio (mV/A)	100 mV/A – 10 mV/A	10 mV/A – 1 mV/A	10 mV/A – 1 mV/A
Measurement range	0.5 A – 30 A / 0.5 A – 300 A	0.5 A – 300 A / 0.5 A – 3000 A	0.5 A – 300 A / 0.5 A – 3000 A
Bandwidth (- 3 dB)	5 Hz to 20 kHz		
References			
Ø 4 mm insulated banana plugs with 19 mm spacing	P01120560	P01120561	P01120562
BNC + Ø 4 mm banana plug adapter	P01120563	P01120564	P01120565

A100	20 A / 200 A	2 kA	0.2 kA / 2 kA	0.3 kA / 3 kA	1 kA / 10 kA				
Sensor length	45 cm	45 cm	80 cm	45 cm	80 cm	45 cm	80 cm	1,2 m	1,2 m
Clamping diameter	Ø 14 cm	Ø 14 cm	Ø 25 cm	Ø 14 cm	Ø 25 cm	Ø 14 cm	Ø 25 cm	Ø 38 cm	Ø 38 cm
I/O ratio (mV/A)	100 mV/A – 10 mV/A	1 mV/A	10 mV/A – 1 mV/A	10 mV/A – 1 mV/A	10 mV/A – 1 mV/A	10 mV/A – 1 mV/A	10 mV/A – 1 mV/A	1 mV/A – 0,1 mV/A	1 mV/A – 0,1 mV/A
Measurement range	0.5 A ... 200 A	0.5 A ... 2 kA	0.5 A ... 2 kA	0.5 A ... 2 kA	0.5 A ... 3 kA	0.5 A ... 3 kA	0.5 A ... 3 kA	0.5 A ... 10 kA	0.5 A ... 10 kA
Bandwidth (- 3 dB)	10 Hz to 20 kHz								
References									
Ø 4 mm insulated banana plugs with 19 mm spacing	P01120503	P01120501	P01120502	P01120504	P01120505	P01120506	P01120507	P01120508	P01120509

For oscilloscopes

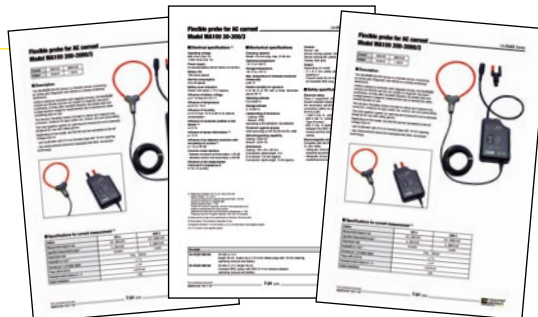
MA200	30 A / 300 A – 45 A peak / 450 A peak	
Sensor length	170 mm	250 mm
Clamping diameter	Ø 45 mm	Ø 70 mm
I/O ratio (mV/A)	100 mV/A – 10 mV/A	
Measurement range	0.5 A – 30 A / 0.5 A – 300 A	
Bandwidth (- 3 dB)	5 Hz to 1 MHz	
References		
BNC	P01120570	P01120571

COMMON GENERAL SPECIFICATIONS

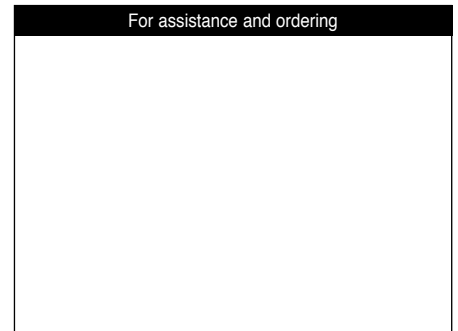
Power supply	9 V battery (6LF22)
Electrical safety	Double insulation – IEC 61010 : casing 600 V CAT III, sensor B 600 V CAT IV / 1000 V CAT III
Environmental conditions	Use: -10 °C to +55 °C and 80 % HR to 50 °C
Sensor protection	IP 50 leakproofing (MA100 and MA200), IP 65 (A100) - Resistant to oils and aliphatic hydrocarbons
Dimensions / weight	Casing: 140 x 64 x 28 mm – MA < 250 g / 250 g < A100 < 560 g Built-in lead: 2 m (linking the sensor to the casing)
Max. peak output voltage	4.5 V

State at delivery:

- **MiniFLEX MA100 with output via banana plugs:** delivered with 9 V alkaline battery, 1 operating manual in 5 languages
- **MiniFLEX MA100 with BNC output:** delivered with 1 adapter for insulated female BNC - Ø 4 mm insulated male with 19 mm spacing, 9 V alkaline battery, 1 operating manual in 5 languages
- **AmpFLEX™ A100 :** delivered with 9 V alkaline battery and operating manual in 5 languages
- **MiniFLEX MA200:** delivered with 9 V alkaline battery and operating manual in 5 languages



Technical documents downloadable from
www.chauvin-arnoux.com



FRANCE
Chauvin Arnoux
190, rue Championnet
75876 PARIS Cedex 18
Tel: +33 1 44 85 44 38
Fax: +33 1 46 27 95 59
export@chauvin-arnoux.fr
www.chauvin-arnoux.fr

UNITED KINGDOM
Chauvin Arnoux Ltd
Waldeck House - Waldeck Road
MAIDENHEAD SL6 8BR
Tel: +44 1628 788 888
Fax: +44 1628 628 099
info@chauvin-arnoux.co.uk
www.chauvin-arnoux.com

MIDDLE EAST
Chauvin Arnoux Middle East
P.O. BOX 60-154
1241 2020 JAL EL DIB (Beirut) - LEBANON
Tel: +961 1 890 425
Fax: +961 1 890 424
camie@chauvin-arnoux.com
www.chauvin-arnoux.com

 **CHAUVIN
ARNOUX**
GROUP