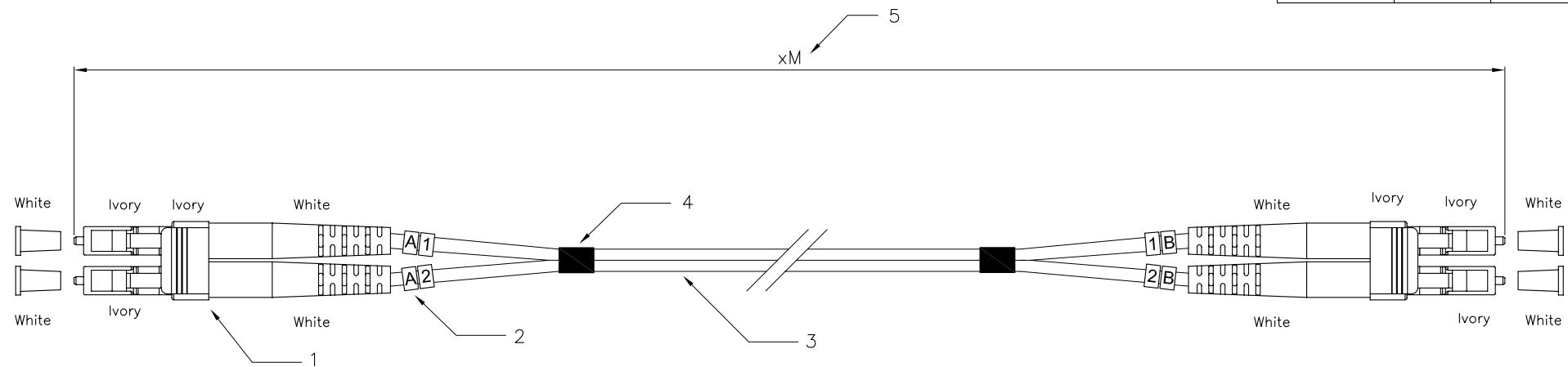


Part No.	(5)Length	Part No.	(5)Length
3180-0.5	0.5M	3180-15	15M
3180-1	1M	3180-20	20M
3180-2	2M	3180-25	25M
3180-3	3M	3180-30	30M
3180-5	5M	3180-50	50M
3180-10	10M		



Specification :

1. Connector Type : LC/PC Multimode.
2. Cable Marker.
3. Cable Type :
 - 3-1 Zipcord cable, $\phi 3.0\text{mm}$, 62.5/125um Multimode.
 - 3-2 Cable Jacket : Gray color, LSZH material.
4. Shrink Tube.
5. Length : xM.

Performance :

- a. Insertion Loss : $< 0.5 \text{ dB}$.
- b. Fiber Extention : $-0.05\text{um} < H < +0.05\text{um}$.
- c. Ferrule End-face Radius : $7 < R < 25\text{mm}$.
- d. Apex Offset : $< 50\text{um}$.
- e. Increase in insertion loss after 500 mating : 0.2 dB Max.
- f. Operation Temperature : -20°C to $+70^\circ\text{C}$.
- g. Storage Temperature : -40°C to $+80^\circ\text{C}$.

RoHS Compliant

	DSGN	CSQ	21.MAY.2007	ITEM NO: 3180
	CHK	Maer	21.MAY.2007	
	UNIT	M/M	APPR	Yty
SCALE	1/1	LC to LC Duplex patch cord		
DWG NO: 3180	Videk Ltd			