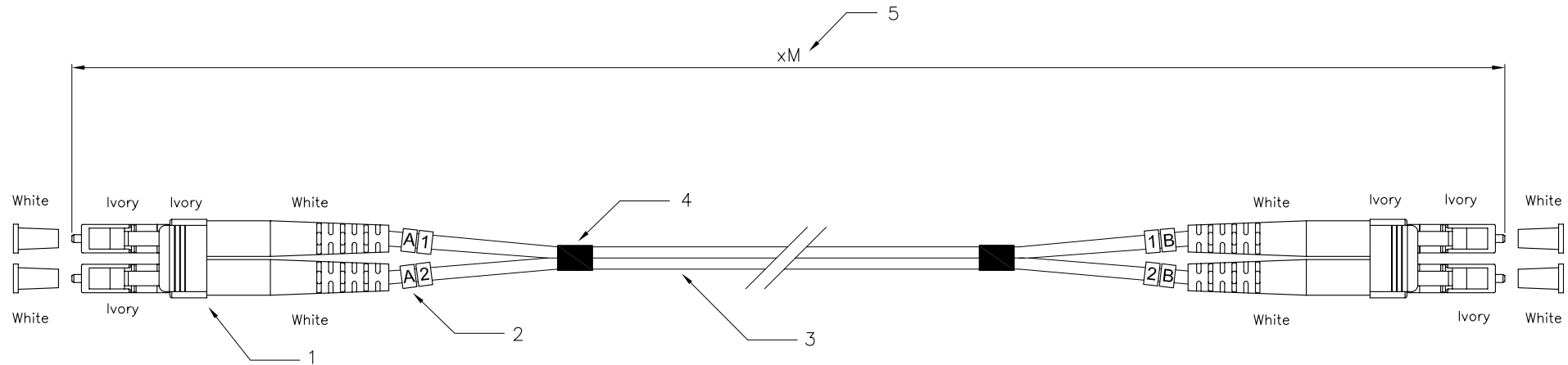


Part No.	(5)Length	Part No.	(5)Length
3180A-1	1M	3180A-10	10M
3180A-2	2M	3180A-15	15M
3180A-3	3M	3180A-20	20M
3180A-5	5M		



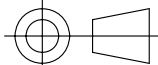
### Specification :

1. Connector Type : LC/PC Multimode.
2. Cable Marker.
3. Cable Type :
  - 3-1 Zipcord cable,  $\phi 3.0\text{mm}$ , 50/125um Multimode.
  - 3-2 Cable Jacket : Orange color, LSZH material.
4. Shrink Tube.
5. Length : xM.

### Performance :

- a. Insertion Loss :  $< 0.5 \text{ dB}$ .
- b. Fiber Extention :  $-0.05\mu\text{m} < H < +0.05\mu\text{m}$ .
- c. Ferrule End-face Radius :  $7 < R < 25\text{mm}$ .
- d. Apex Offset :  $< 50\mu\text{m}$ .
- e. Increase in insertion loss after 500 mating : 0.2 dB Max.
- f. Operation Temperature :  $-20^\circ\text{C}$  to  $+70^\circ\text{C}$ .
- g. Storage Temperature :  $-40^\circ\text{C}$  to  $+80^\circ\text{C}$ .

**RoHS Compliant**

	DSGN	CSQ	31.MAY.2007	ITEM NO: 3180A
	CHK	Maer	31.MAY.2007	
UNIT	M/M	APPR	Yty	LC to LC Duplex patch cord
SCALE	1/1			
DWG NO: 3180A	<b>Videk Ltd</b>			