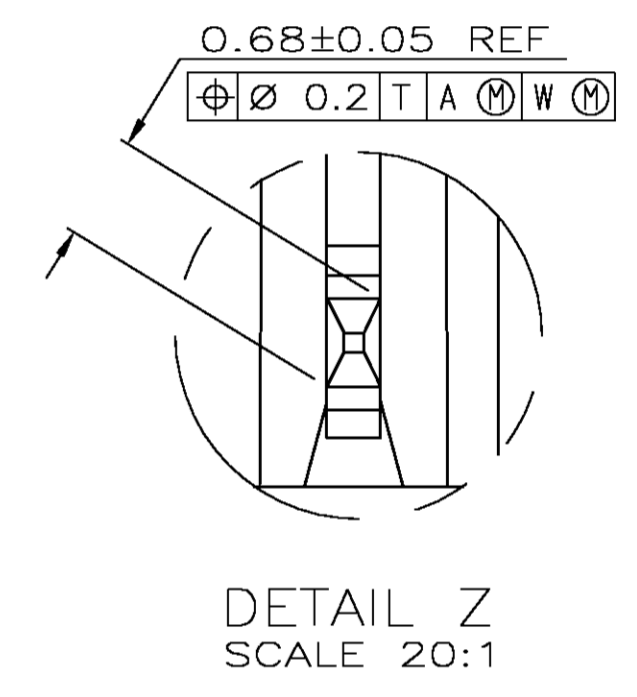


- ① HOUSING MATERIAL: LIQUID CRYSTAL POLYMER  
COLOR: NATURAL.
- ② CONTACT MATERIAL: PHOSPHOR-BRONZE.
- ③ CONTACT FINISH:  
UNDERPLATE (ENTIRE CONTACT):  
0.00127 MIN NICKEL PER SAE-AMS-QQ-N-290  
ON MATING SURFACES:  
CONFORMS TO ALL TESTING SPECIFIED FOR TELCORDIA UNCONTROLLED ENVIRONMENT.  
ON LEADS:  
0.0006 MIN MATTE TIN PER ASTM B 545 OVER UNDERPLATE.  
LUBRICATION (MIN MATING SURFACES):  
SURFACE CONDITIONER AFTER PLATING.
- ④ PART MARKING LOCATED APPROXIMATELY AS SHOWN.
- ⑤ CONTACT FINISH:  
UNDERPLATE (ENTIRE CONTACT):  
0.00127 MIN NICKEL PER SAE-AMS-QQ-N-290  
ON MATING SURFACES:  
0.00076 MIN NICKEL OR COBALT HARDENED GOLD PER ASTM B-488 OVER UNDERPLATE.  
ON LEADS:  
0.0006 MIN MATTE TIN PER ASTM B 545 OVER UNDERPLATE.  
LUBRICATION (MIN MATING SURFACES):  
SURFACE CONDITIONER AFTER PLATING.
- ⑥ CONTACT FINISH:  
UNDERPLATE (ENTIRE CONTACT):  
0.00127 MIN NICKEL PER SAE-AMS-QQ-N-290  
ON MATING SURFACES:  
0.00127 MIN NICKEL OR COBALT HARDENED GOLD PER ASTM B-488 OVER UNDERPLATE.  
ON LEADS:  
0.0006 MIN MATTE TIN PER ASTM B 545 OVER UNDERPLATE.  
LUBRICATION (MIN MATING SURFACES):  
SURFACE CONDITIONER AFTER PLATING.



RECOMMENDED CIRCUIT PATTERN  
 PER IPC-D300 TYPE II, CLASS C  
 (COMPONENT SIDE)

FINISH	POSITIONING PEGS	C	B	A	NO OF SIGNAL POSN	PART NUMBER
⑤	NO	46	23	47.88	120	3-5223008-4
⑥	NO	46	23	47.88	120	2-5223008-4
③	NO	214	107	215.88	540	1-5223008-2
⑤	NO	130	65	131.88	330	1-5223008-1
③	NO	118	59	119.88	300	1-5223008-0
⑤	NO	106	53	107.88	270	5223008-9
③	NO	94	47	95.88	240	5223008-8
⑤	NO	82	41	83.88	210	5223008-7
③	NO	70	35	71.88	180	5223008-6
⑤	NO	58	29	59.88	150	5223008-5
③	NO	46	23	47.88	120	5223008-4
⑤	NO	34	17	35.88	90	5223008-3
③	NO	22	11	23.88	60	5223008-2
⑤	YES	10	5	11.88	30	5223008-1

THIS DRAWING IS A CONTROLLED DOCUMENT.

DMN: B.MCMASTER	22NOV04		Tyco Electronics Corporation Harrisburg, Pa 17105-3608	
CHK: R.WERTZ	22NOV04		NAME: R.WERTZ	ASSEMBLY, RECEPTACLE, SIGNAL, RIGHT ANGLE, Z-PACK 2mm FB, 5 ROW, PRESS FIT LEAD
DIMENSIONS: mm		TOLERANCES UNLESS OTHERWISE SPECIFIED:		APVD: R.WERTZ
0 PLC	± -	1 PLC	± -	PRODUCT SPEC
2 PLC	± 0.13	3 PLC	± -	APPLICATION SPEC
4 PLC	± -	ANGLES	± -	SIZE: DATE CODE: DRAWING NO
MATERIAL	FINISH	WEIGHT	—	A1 00779 C=5223008
①	②	③	⑤	CUSTOMER DRAWING

SCALE: 4:1 SHEET 1 OF 1 REV B