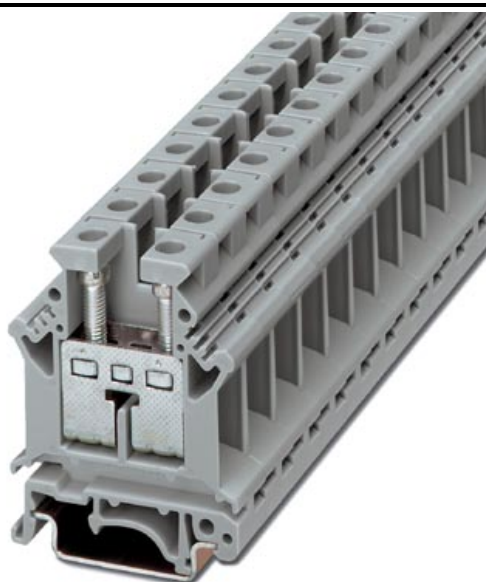


Please note that the data given here has been taken from the online catalog. For comprehensive information and data, please refer to the user documentation at <http://www.download.phoenixcontact.com>. The General Terms and Conditions of Use apply to Internet downloads.

## ► Extract from the online catalog



Universal terminal block with screw connection, cross section: 4 - 16 mm<sup>2</sup>, AWG: 12 - 4, width: 12.2 mm, color: gray

|                          |                    |
|--------------------------|--------------------|
| Order No.                | 3006043            |
| Ord designation          | UK 16 N            |
| EAN                      | 4017918091309      |
| Pack                     | 50 Pcs.            |
| Customs tariff           | 85369010           |
| Weight/Piece             | 0,02408 KG         |
| Catalog page information | Page 213 (CL-2005) |

## ► Product notes

WEEE/RoHS-compliant since: 01/01/2003



**IMPORTANT :** This date is valid for Customers in Germany only. Date Format is MM/DD/YYYY. Please contact your local in-country Phoenix Contact location or designated business partner for a Logistics Compliant date in your area. In order to guarantee delivery of RoHS-Compliant product, please purchase Phoenix Contact parts from authorized Phoenix Contact representatives and distributors.

UK 16 N



---

▶ **Technical data**

---

---

**General**

|                                    |      |
|------------------------------------|------|
| Number of levels                   | 1    |
| Number of connections              | 2    |
| Color                              | gray |
| Insulating material                | PA   |
| Inflammability class acc. to UL 94 | V0   |

---

**Dimensions**

|                  |         |
|------------------|---------|
| Width            | 12.2 mm |
| Length           | 42.5 mm |
| Height NS 35/7,5 | 54 mm   |
| Height NS 35/15  | 61.5 mm |
| Height NS 32     | 59 mm   |

---

**Technical data**

|                                  |   |
|----------------------------------|---|
| Maximum load current             | 101 A (with 25 mm <sup>2</sup> conductor cross section) |
| Rated surge voltage              | 8 kV  |
| Contamination class              | 3   |
| Surge voltage category           | III   |
| Insulating material group        | I   |
| Connection in acc. with standard | IEC / EN  |
| Nominal current I <sub>N</sub>   | 101 A   |
| Nominal voltage U <sub>N</sub>   | 800 V   |
| Open side panel                  | ja  |

---

**Connection data**

|   |                      |
|---|----------------------|
| Conductor cross section solid min.  | 2.5 mm <sup>2</sup>  |
| Conductor cross section solid max.  | 25 mm <sup>2</sup>   |
| Conductor cross section stranded min.   | 4 mm <sup>2</sup>    |
| Conductor cross section stranded max.   | 16 mm <sup>2</sup>   |
| Conductor cross section AWG/kcmil min.  | 12                   |
| Conductor cross section AWG/kcmil max   | 4                    |
| Conductor cross section stranded, with ferrule without plastic sleeve min.              | 1.5 mm <sup>2</sup>  |
| Conductor cross section stranded, with ferrule without plastic sleeve max.              | 16 mm <sup>2</sup>   |
| Conductor cross section stranded, with ferrule with plastic sleeve min.                 | 1.5 mm <sup>2</sup>  |
| Conductor cross section stranded, with ferrule with plastic sleeve max.                 | 16 mm <sup>2</sup>   |
| 2 conductors with same cross section, solid min.  | 1.5 mm <sup>2</sup>  |
| 2 conductors with same cross section, solid max.  | 6 mm <sup>2</sup>    |
| 2 conductors with same cross section, stranded min.                                     | 1.5 mm <sup>2</sup>  |
| 2 conductors with same cross section, stranded max.                                     | 4 mm <sup>2</sup>    |
| 2 conductors with same cross section, stranded, TWIN ferrules with plastic sleeve, min. | 0.75 mm <sup>2</sup> |
| 2 conductors with same cross section, stranded, TWIN ferrules with plastic sleeve, max. | 10 mm <sup>2</sup>   |
| 2 conductors with same cross section, stranded, ferrules without plastic sleeve, min.   | 1.5 mm <sup>2</sup>  |

## UK 16 N



---

2 conductors with same cross section, stranded, ferrules 6 mm<sup>2</sup>  
without plastic sleeve, max.

|                           |                  |
|---------------------------|------------------|
| Type of connection        | Screw connection |
| Stripping length          | 11 mm            |
| Internal cylindrical gage | B7               |
| Screw thread              | M 4              |
| Tightening torque, min    | 1.5 Nm           |



---

**► Certificates / Approvals**

---

**Certificate logos**

---

**CSA**

|                       |       |
|-----------------------|-------|
| Nominal voltage $U_N$ | 600 V |
| Nominal current $I_N$ | 85 A  |
| AWG/kcmil             | 22-4  |

---

**CUL**

|                       |       |
|-----------------------|-------|
| Nominal voltage $U_N$ | 600 V |
| Nominal current $I_N$ | 85 A  |
| AWG/kcmil             | 22-4  |

---

**UL**

|                       |       |
|-----------------------|-------|
| Nominal voltage $U_N$ | 600 V |
| Nominal current $I_N$ | 85 A  |
| AWG/kcmil             | 22-4  |

---

## ► Accessories

| Item            | Designation                   | Description   |
|-----------------|-------------------------------|---|
| <b>Assembly</b> |                               |   |
| 3003224         | ATP-UK                        | Separating plate, for visual and electrical separation of terminal groups, width: 1.5 mm, color: Gray   |
| 3022218         | CLIPFIX 35                    | Snap-on end bracket, for 35 mm NS 35/7.5 or NS 35/15 mounting rail, can be fitted with Zack strip ZB 8 and ZB 8/27, terminal strip marker KLM 2 and KLM, width: 9.5 mm, color: gray |
| 3006027         | D-UK 16                       | Cover, width: 1.5 mm, color: gray   |
| 1201442         | E/UK                          | End clamp, for supporting the electronic base. If mounted vertically, 2 end clamps are required in each case  |
| 1024250         | EA 7                          | Single covers, color: transparent   |
| 0800747         | EA 7-WS                       | Single covers, for covering one terminal block, with black symbol (lightning flash) snap fit, color: transparent/yellow   |
| 1201028         | NS 32 AL UNPERF 2000MM        | G rail 32 mm (NS 32)  |
| 1201280         | NS 32 CU/120QMM UNPERF 2000MM | G-profile DIN rail, deep-drawn, material: Copper, unperforated, height 15 mm, width 32 mm, length 2 m   |
| 1201358         | NS 32 CU/35QMM UNPERF 2000MM  | G-profile DIN rail, material: Copper, unperforated, height 15 mm, width 32 mm, length 2 m   |
| 1201002         | NS 32 PERF 2000MM             | G-profile DIN rail, material: Steel, perforated, height 15 mm, width 32 mm, length 2 m  |
| 1201015         | NS 32 UNPERF 2000MM           | G-profile DIN rail, material: Steel, unperforated, height 15 mm, width 32 mm, length 2 m  |
| 0801762         | NS 35/ 7,5 CU UNPERF 2000MM   | DIN rail, material: Copper, unperforated, height 7.5 mm, width 35 mm, length: 2 m   |
| 0801733         | NS 35/ 7,5 PERF 2000MM        | DIN rail, material: Steel, perforated, height 7.5 mm, width 35 mm, length: 2 m  |
| 0801681         | NS 35/ 7,5 UNPERF 2000MM      | DIN rail, material: Steel, unperforated, height 7.5 mm, width 35 mm, length: 2 m  |
| 1201756         | NS 35/15 AL UNPERF 2000MM     | DIN rail, deep-drawn, high profile, unperforated, 1.5 mm thick, material: Aluminum, height 15 mm, width 35 mm, length 2 m   |
| 1201895         | NS 35/15 CU UNPERF 2000MM     | DIN rail, material: Copper, unperforated, 1.5 mm thick, height 15 mm, width 35 mm, length: 2 m  |
| 1201730         | NS 35/15 PERF 2000MM          | DIN rail, material: Steel, perforated, height 15 mm, width 35 mm, length: 2 m   |
| 1201714         | NS 35/15 UNPERF 2000MM        | DIN rail, material: Steel, unperforated, height 15 mm, width 35 mm, length: 2 m   |
| 1201798         | NS 35/15-2,3 UNPERF 2000MM    | DIN rail, material: Steel, unperforated, 2.3 mm thick, height 15 mm, width 35 mm, length: 2 m   |
| 1302215         | TS-K                          | Separating plate, for electrical separation of neighboring bridges, can be fitted later, no loss of pitch, color: Gray  |
| <b>Bridges</b>  |                               |   |
| 3006137         | EB 10-12                      | Insertion bridge, 10-pos., divisible, fully insulated   |
| 0200075         | FBI 2-12                      | Fixed bridge, for cross connections, with screws, screw heads without insulation, 2-pos.  |
| 0203454         | FBI 10-12                     | Fixed bridge, 10-pos., screw heads with insulating collar, divisible, with screws   |

**Marking**

---

|         |             |   |
|---------|-------------|---|
| 0805373 | WSI 4-12    | Warning plate, with 2 plastic screws, across 4 terminal blocks, pitch 12 mm                     |
| 0805386 | WSI 5-12    | Warning plate, with 2 plastic screws, across 5 terminal blocks, pitch 12 mm                     |
| 1050525 | ZB10:SO/CMS | Zack strip, 10-section, divisible, special printing, marking according to customer requirements |



---

**Plug/Adapter**

|         |                     |   |
|---------|---------------------|---|
| 2798035 | PAD 2,3/10/16 GN    | Connector, color: green   |
| 2798064 | PAD 4/10/16 GN      | Connector, color: green   |
| 2798093 | PAD-LOE/10/16 GN    | Connector, color: green   |
| 0311647 | PS-MT               | Test plug, consisting of: metal part for 4 mm diameter socket hole and insulating sleeve for PS metal part                |
| 0303299 | PSB 4/7/6           | Test plug socket, not insulated, length: 7 mm, screw thread width: 4 mm, socket width: 6 mm                               |
| 0303406 | PSBJ 4/15/6 BK      | Test plug socket, insulated, length: 15 mm, screw thread width: 4 mm, socket width: 6 mm, insulation material in black    |
| 0303354 | PSBJ 4/15/6 BU      | Test plug socket, insulated, length: 15 mm, screw thread width: 4 mm, socket width: 6 mm, insulation material in blue     |
| 0303419 | PSBJ 4/15/6 FARBLOS | Test plug socket, insulated, length: 15 mm, screw thread width: 4 mm, socket width: 6 mm, insulation material transparent |
| 0303370 | PSBJ 4/15/6 GN      | Test plug socket, insulated, length: 15 mm, screw thread width: 4 mm, socket width: 6 mm, insulation material in green    |
| 0303396 | PSBJ 4/15/6 GY      | Test plug socket, insulated, length: 15 mm, screw thread width: 4 mm, socket width: 6 mm, insulation material in gray     |
| 0303325 | PSBJ 4/15/6 RD      | Test plug socket, insulated, length: 15 mm, screw thread width: 4 mm, socket width: 6 mm, insulation material in red      |
| 0303383 | PSBJ 4/15/6 VT      | Test plug socket, insulated, length: 15 mm, screw thread width: 4 mm, socket width: 6 mm, insulation material in violet   |
| 0303312 | PSBJ 4/15/6 WH      | Test plug socket, insulated, length: 15 mm, screw thread width: 4 mm, socket width: 6 mm, insulation material in white    |
| 0303367 | PSBJ 4/15/6 YE      | Test plug socket, insulated, length: 15 mm, screw thread width: 4 mm, socket width: 6 mm, insulation material in yellow   |

---

---

## ► Address

---

PHOENIX CONTACT GmbH & Co. KG

Flachsmarktstr. 8

32825 Blomberg

Germany

Phone +49 5235 3 00

Fax +49 5235 3 41200

<http://www.phoenixcontact.com>

Phoenix Contact

Technical modifications reserved;