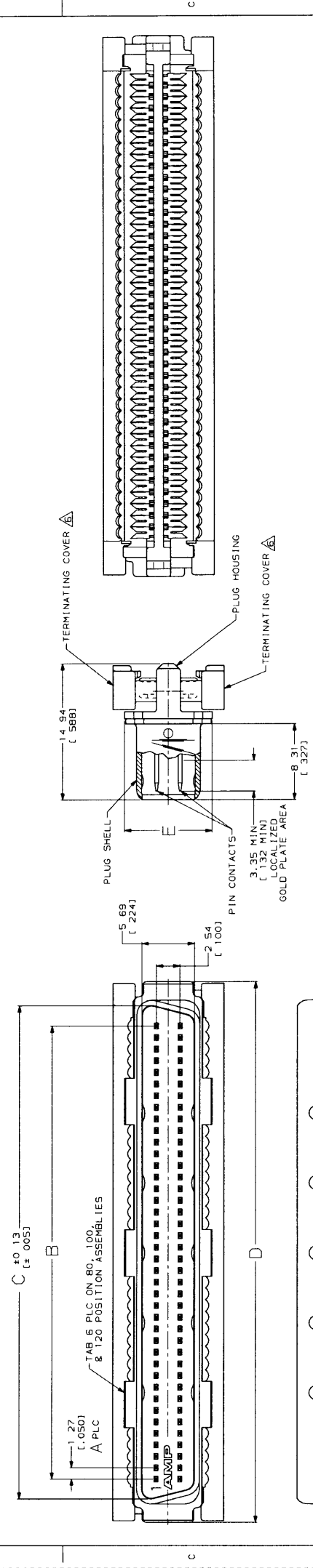


487 715

REV	DATE	DESCRIPTION	BY	CHKD	APPD	DATE
H	11/16/83	REV PER EC 0020-1245-93				
J	11/16/83	REV PER EC 0020-1168-94				
K	03/27/86	REV PER EC 0020-318-94				
L	03/27/86	REV PER EC 0020-0228-95				
M	11/01/85	ADDED 1--5 PER EC 0020-1382-95				
N	06/08/86	REV PER EC 0020-981-94				
P	10/08/97	OBSOLETE -1, -5 AND -11 PER EC 0020-481-96				



FINISH	POSN	CONTACT NO OF	SCALE	DRAWING NO	SHEET
7.44	40 11	34 85	30 48	24	50
	[.293]	[1.579]	[1.372]	[1.200]	
7.44	31 22	25.96	21 59	17	36
	[.293]	[1.229]	[1.022]	[.850]	
9.47	84 56	79.30	74 93	59	120
	[.373]	[3.329]	[3.122]	[2.950]	
9.47	71 86	66.60	62 23	49	100
	[.373]	[2.829]	[2.622]	[2.450]	
9.47	59 16	53.90	49 53	39	80
	[.373]	[2.329]	[2.122]	[1.950]	
7.44	51 54	46.28	41 91	33	68
	[.293]	[2.029]	[1.822]	[1.650]	
7.44	46 46	41 20	36 83	29	60
	[.293]	[1.829]	[1.622]	[1.450]	
7.44	40 11	34 85	30 48	24	50
	[.293]	[1.579]	[1.372]	[1.200]	
7.44	33 26	28 50	24 13	19	40
	[.293]	[1.329]	[1.122]	[.950]	
7.44	26 14	20 68	16 51	13	28
	[.293]	[1.029]	[.822]	[.650]	
7.44	24 87	19 61	15 24	12	26
	[.293]	[.979]	[.772]	[.600]	
7.44	21 06	15 80	11 43	9	20
	[.293]	[.829]	[.622]	[.450]	

DO NOT SCALE PRINT
DIMENSIONS IN INCHES
TOLERANCES IN INCHES
3 P.L.C. DEC. 8. (618)
MATERIAL

DR 02/1/86
CHK 04/03/86
APPD JOHN A. ROOT
NAME JOHN A. DAVIS
APPD ROBERT WHITEMAN
PRODUCT SPEC 108-1228

AMP INCORPORATED
108-1228
KIT, PLUG ASSEMBLY,
AMPLIMITE® 050 5pr+es

FINISH SHELL: SEE TABLE
CONTACTS: SEE TABLE

SIZE 114-40029
SCALE 5:1

DRAWING NO 749621
SHEET 1 OF 1

CUSTOMER DRAWING

- △ PIN CONTACTS, PHOSPHOR BRONZE
- △ PLUG SHELL, STEEL
- △ PLUG HOUSING AND TERMINATING COVERS, THERMOPLASTIC, BLACK, UL V-0 RATED.
- △ 0.25µm (00010) MIN TIN-NICKEL OVER 3.81µm (000150) MIN NICKEL OVER 2.54 µm (0.00100) MIN COPPER
- △ 0.76µm (00030) MIN GOLD IN LOCALIZED GOLD PLATE AREA, 1.52µm (00060) MIN TIN-LEAD IN TERMINATION AREA, ALL OVER 1.27µm (00050) MIN NICKEL
- △ GOLD FLASH IN LOCALIZED GOLD PLATE AREA, 1.52µm (00060) MIN TIN-LEAD IN TERMINATION AREA, ALL OVER 1.27µm (00050) MIN NICKEL
- △ 500 CYCLES DURABILITY PER 108-1228 DOES NOT APPLY FOR CONNECTORS WITH LESS THAN 0.76µm (00030) THICK GOLD.
- △ TERMINATING COVERS ARE PACKAGED SEPARATELY
- 7. RECOMMENDED WIRE 28 AWG OR 30 AWG, SOLID OR 7 STRAND, WITH A 0.74-0.91 (.029-0.36) INSULATION DIAMETER. WIRE MUST BE APPROVED BY AMP INCORPORATED
- △ OBSOLETE PART NUMBER