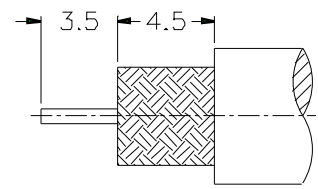
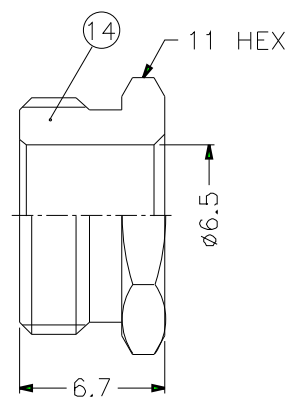
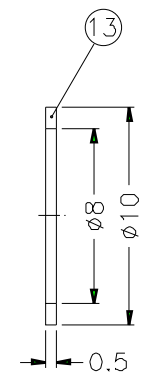
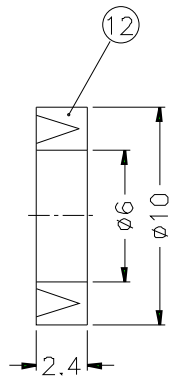
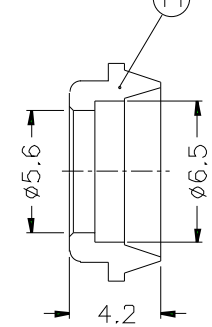
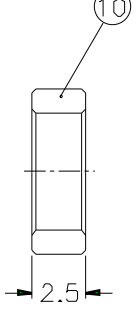
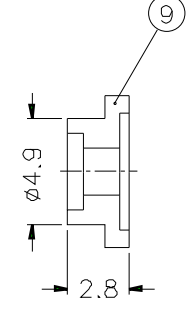
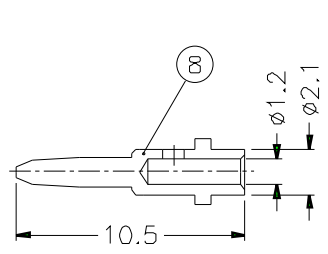
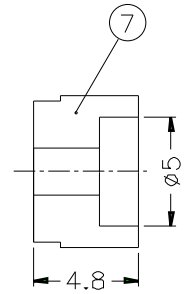


REVISIONS		
ISS	ZONE	DESCRIPTION\PER REQUEST\DATE



1. CRIMPED CONTACT PIN  
HEX CRIMP SIZE .068"

RECOMMENDED  
CABLE STRIPPING DIM'S



14	HEX NUT	NOTE 1	NOTE 3	1	B5200-14-11/65
13	WASHER	NOTE 2	NOTE 3	1	WS-10/8X05
12	GASKET	SILICONE	RED	1	B5200-12
11	BRAID CLAMP	NOTE 1	NOTE 3	1	B5200-11-65/56 -B
10	RING	NOTE 1	NOTE 3	1	B5200-10
9	INSULATOR	DELTRIN	NATURAL	1	B5200-9
8	CONTACT PIN	NOTE 1	NOTE 5	1	B5200-8-21/12
7	INSULATOR	DELTRIN	NATURAL	1	B5200-7-75
6	WASHER	NOTE 2	NOTE 3	1	WS-12B/9X08
5	SPRING	SK5	NOTE 4	1	B50000-6
4	RETAINER RING	NOTE 1	NOTE 3	1	B50000-5
3	GASKET	RUBBER	RED	1	GS-115/8X15
2	BODY	NOTE 1	NOTE 3	1	B5200-2-A
1	SHELL	NOTE 1	NOTE 3	1	B50000-1-B
NO.	DESCRIPTION	MATERIAL	FINISH	Q'TY	DRAWING NO.

NOTES: FINISH (PLATING THICKNESS IN MICRO-INCHES)  
 1. BRASS PER QQ-B-626  
 2. BRASS PER QQ-B-613  
 3. NICKEL PL. 100 MIN. THICK OVER COPPER STRIKE  
 4. NICKEL PL. 200 MIN. THICK OVER COPPER STRIKE  
 5. GOLD PL. 3 MIN. THICK OVER NICKEL PL. 100 MIN. THICK OVER COPPER STRIKE

DIMENSIONS ARE IN MILLIMETERS				PART NO.			
UNLESS OTHERWISE SPECIFIED TOLERANCES 0.5-6 = ±0.2 6-30 = ±0.4 30-120 = ±0.6 120-315 = ±1 315-1000 = ±1.6 1000-2000 = ±2.4				B1141A1-ND3G-3-75			
				APPROVED	DATE	10-11-01'	
				CHECKED	DATE	10-11-01'	
				DRAWN	DATE	10-11-01'	
SCALE	3/1	ISSUE	A	FILE NO.			

<b>Amphenol</b>	
TITLE BNC CLAMP PLUG	
DRAWING NO. KJ-B1141A1-ND3G-59U-75	
ITEM NO.	