

Applications of the LM3524 Pulse-Width-Modulator

The LM3524 Regulating Pulse-Width-Modulator is commonly used as the control element in switching regulator power supplies. This is in keeping with its intended purpose. Engineers closely associate this part with switching power supplies. Nevertheless, the flexible combination of elements (see box) within the LM3524 also allows it to be used in a number of other applications outside the power supply area. Because the device is inexpensive and operates off a single-sided supply, it can considerably reduce component count and circuit complexity in almost any application. The constant light intensity servo of *Figure 1* furnishes a good example.

Constant Light Intensity Servo

The circuit of *Figure 1* uses a photodiode's output to control the intensity of a small light bulb. The constant intensity output of the light bulb is useful in a number of areas, including opto-electronic component evaluation and quality control of photographic film during manufacture. In this circuit, the photodiode pulls a current out of the LF356 summing junction, which is directly related to the amount of light that falls on the photodiode's surface. The LF356 output swings positive to maintain the summing junction at zero and represents the photodiode current in amplified voltage form. This potential is compared at the LM3524 to the voltage coming from the 2.5k "intensity" potentiometer wiper. A stable voltage for the "intensity" control is taken from the LM3524's internal five-volt regulator. The difference between the LF356 output and the "intensity" potentiometer output is amplified at a gain of about 70 dB, which is set by the 1 M Ω value at pin 9. The LM3524 output transistors are paralleled

and provide drive to the 2N2219 switch transistor. The 5.6k and .01 μ F values set the switching frequency at about 30 kHz. Because the LM3524 forms a switched mode feedback loop around the light bulb and photodiode, the average power delivered to the light bulb will be controlled by the photodiode output, which is directly proportional to the

Temperature-to-Pulse-Width Converter

The circuit in *Figure 5* uses the LM3524 to convert the output of an LM135 temperature transducer into a pulse width which can be measured by a digital system, such as a microprocessor-controlled data acquisition system. Although this example uses the temperature transducer as the input, the circuit will convert any 0.1 to 5V input applied to the 100 k Ω resistor into a 0–500 ms output pulse width with 0.1% linearity. In this circuit, the LM135's temperature-dependent output (10 mV/ $^{\circ}$ K) is divided down and applied to A1's positive input. This moves A1's output high, driving the input to the LM3524's pulse-width modulation circuitry. The LM3524 pulse-width output is clipped by the LM185 reference and integrated by the 1 M Ω -0.1 μ F combination. The DC level across the 0.1 μ F capacitor is fed back to A1's negative input. This feedback path forces the LM3524's output pulse width to vary in a highly linear fashion according to the potential at A1's positive input. The overall temperature-to-pulse width scale factor is adjusted with the "gain trim" potentiometer. The 1000 pF capacitor provides stable loop compensation. A1, an LM358, allows voltages very close to ground to be sensed. This provides greater input range than the LM3524's input amplifier, which has a common mode range of 1.8–3.4V. The oscillator output pulse at pin 3 may be used to reset counters or other digital circuitry because it occurs just before the output pulse width begins.

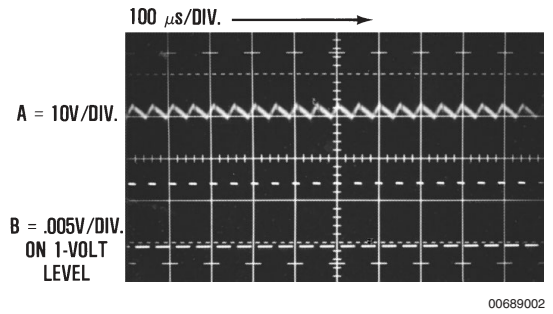


FIGURE 2.

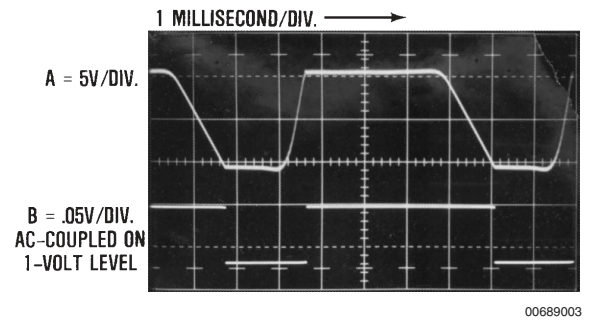


FIGURE 3.

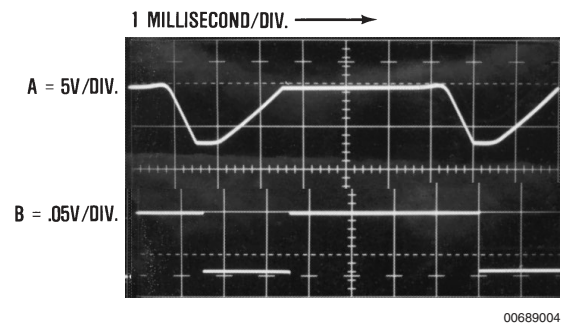
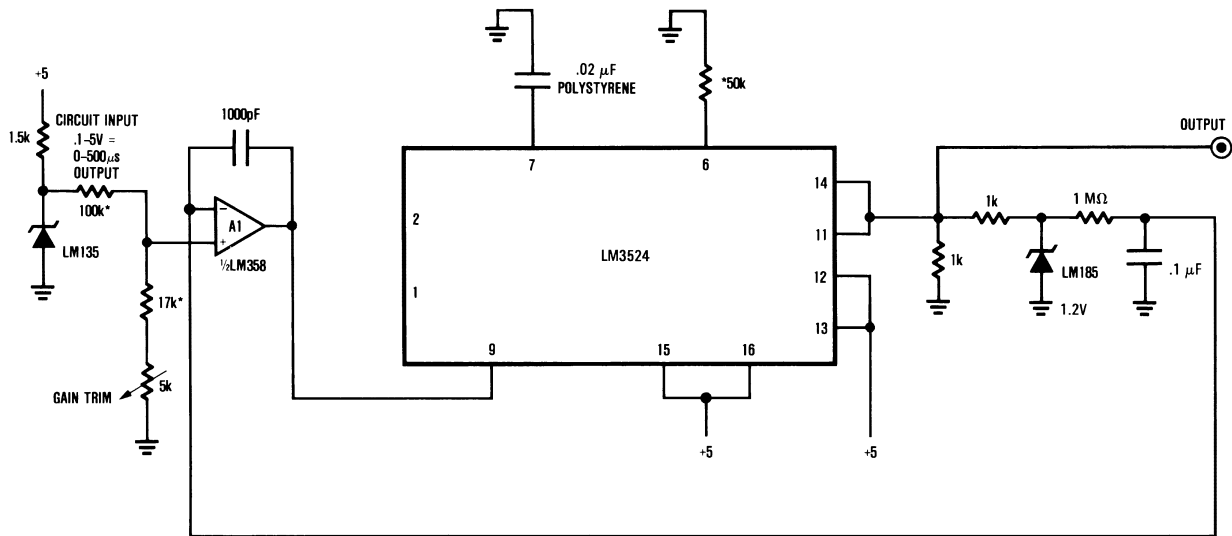


FIGURE 4.

Temperature-to-Pulse-Width Converter (Continued)



00689005

*Metal Film Resistor

FIGURE 5.

RTD Temperature Controller

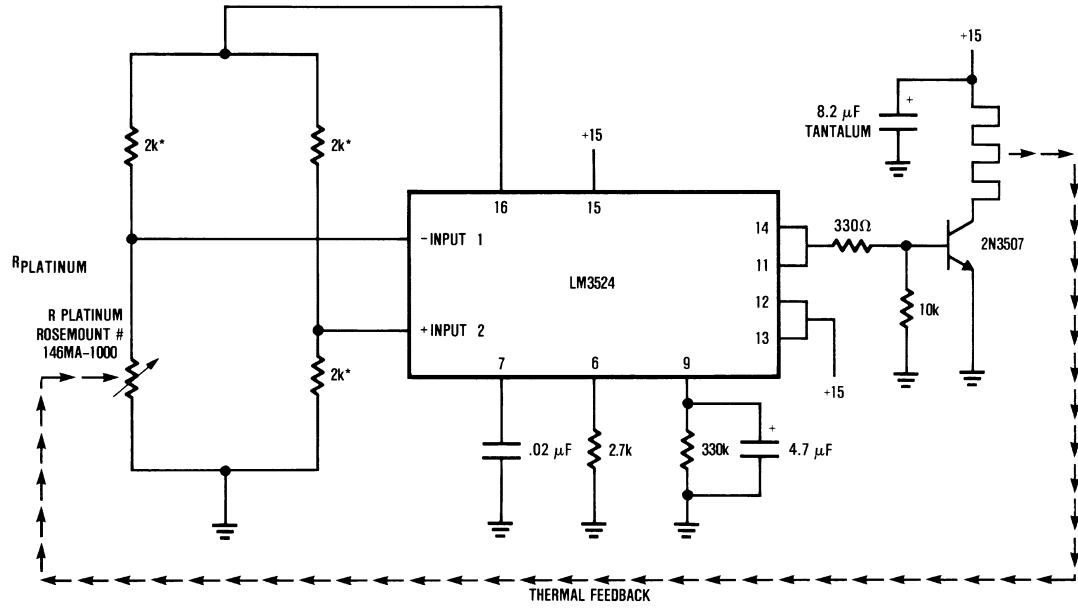
Figure 6 is another temperature circuit which uses the LM3524 to control the temperature of a small oven. Here, a platinum RTD is used as a sensor in a bridge circuit made up of the 2 kΩ resistors. When power is applied, the positive temperature coefficient platinum sensor is at a low value and the LM3524's positive input is at a higher potential than its negative input. This forces the output to go high, turning on the 2N3507 and driving the heater. When the servo point is reached, the duty cycle of the heater is reduced from 90% (full on) to whatever value is required to keep the oven at temperature. The 330k-4.7 μF combination at the internal input amplifier's output sets the servo gain at about 55 dB at 1 Hz, more than adequate for most thermal-control applications. The 0.02 μF-2.7k combination sets the pulse frequency at about 15 kHz, far above the 1 Hz pole of the servo gain. If the sensor is maintained in close thermal contact with the heater, this circuit will easily control to .1°C stability over widely varying ambients.

"SENSORLESS" Motor Speed Control

Figure 7 shows the LM3524 in an arrangement which controls the speed of a motor without requiring the usual tachometer or other speed pick-off. This circuit uses the back EMF of the motor to bias a feedback loop, which controls motor speed. When power is applied, the positive input of the LM3524 is at a higher potential than the negative input. Under these conditions, the output of the LM3524 is biased full on (90% duty cycle). The output transistors, paralleled in

the common emitter configuration, drive the 2N5023 and the motor turns. (LM3524 output is waveform A, Figure 8; waveform B is the 2N5023 collector.) The LM3524 output pulse is also used to drive a 1000 pF-500 kΩ differentiator network whose output is compared to the LM3524's internal 5V reference. The result is a delayed pulse (Figure 8, waveform D), which is used to trigger an LF398 sample-and-hold IC. As the waveforms show, the sample-and-hold is gated high (ON) just as the 2N5023 collector stops supplying current to the motor. At this instant, the motor coils produce a flyback pulse, which is damped by the shunt diode. (Motor waveform is Figure 8, trace C). After the flyback pulse decays, the back EMF of the motor remains. This voltage is "remembered" by the sample-and-hold IC when the sample trigger pulse ceases and is used to complete the speed control loop back at the LM3524 input. The 10k-4k divider at the motor output insures the LF398's output will always be within the common range of the LM3524's input. The 10k-1 μF combination provides filtering during the time the LF398 is sampling. The diode associated with this time constant prevents any possible LF398 negative output from damaging the LM3524. The 10 MΩ resistor paralleling the 0.01 μF sampling capacitor prevents the servo from "hanging up" if this capacitor somehow manages to charge above the motor's back EMF value. The 39k-100 μF pair sets the loop frequency response. The maximum pulse-width-modulator duty cycle is clamped by the 2k-2k divider and diode at 80%, thus avoiding overshoot and aiding transient response at turn-on and during large positive step changes. The 60k-0.1 μF values at pins 6 and 7 set the pulse modulation frequency at 300 Hz.

“SENSORLESS” Motor Speed Control (Continued)

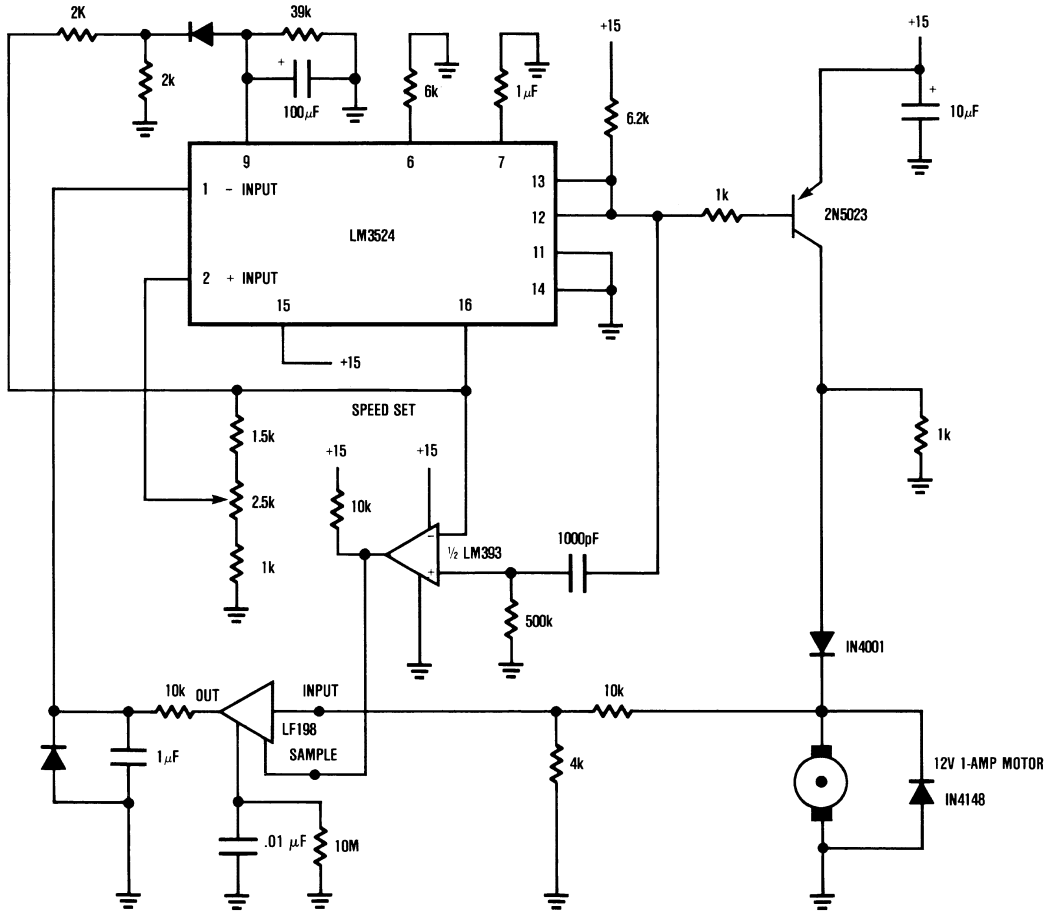


*TRW Type MAR-60 .1%

00689006

FIGURE 6.

“SENSORLESS” Motor Speed Control (Continued)

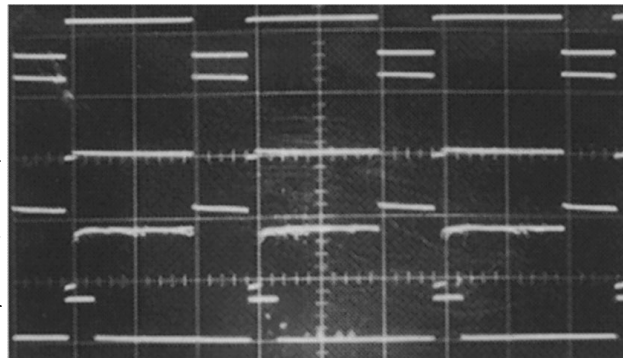


00689007

FIGURE 7.

HORIZONTAL 3..s/DIV.

- A 20V/DIV.
- B 10V/DIV.
- C 50V/DIV.
- D 20V/DIV.

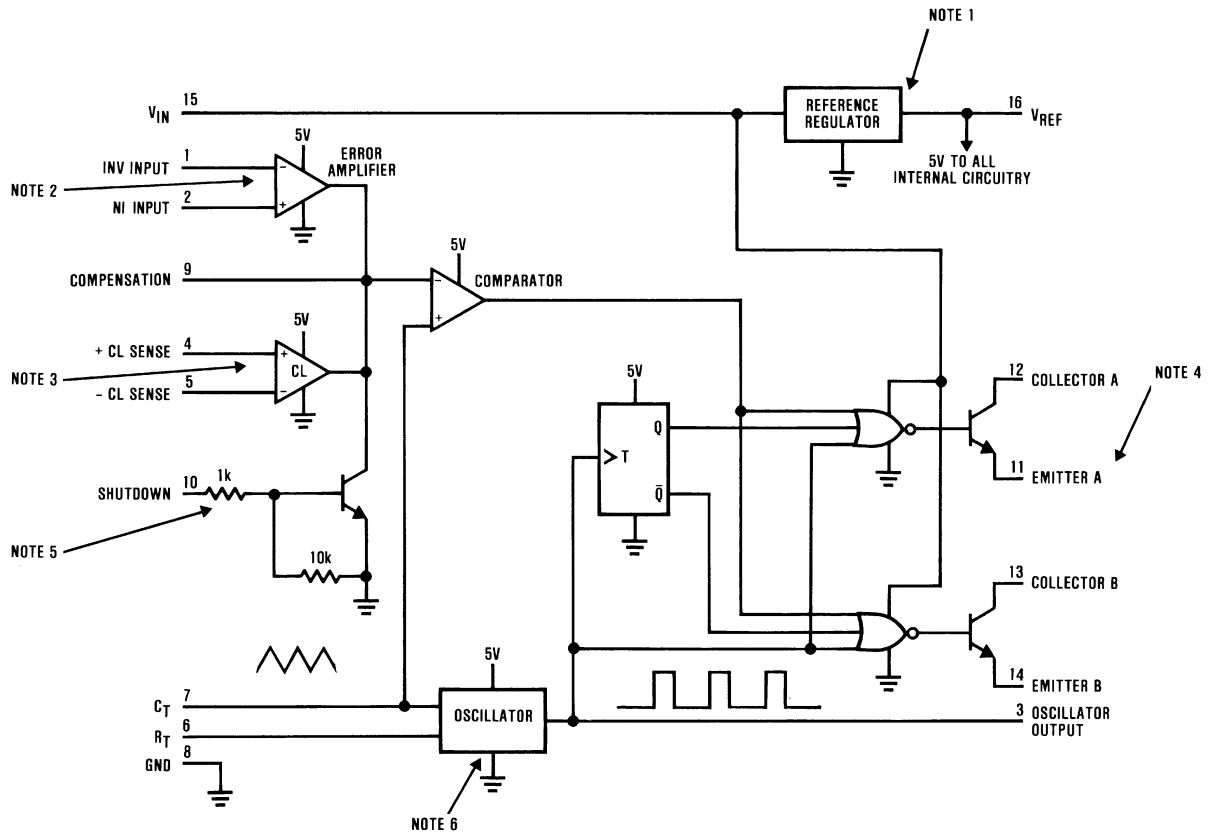


00689008

FIGURE 8.

“SENSORLESS” Motor Speed Control (Continued)

The LM3524 at a Glance



- Note 1:** 5V 50 mA regulator available to user.
- Note 2:** Transconductance diff. input amplifier. Gains from 40–80 dB available by resistor loading of output. 1.8–3.4V common mode input range.
- Note 3:** Over current sense comparator –0.7 to 1V common mode input range.
- Note 4:** Output transistors switch out of phase and may be paralleled. Up to 100 mA maximum output current.
- Note 5:** Transistor may be used to strobe LM3524 into an off state at its outputs.
- Note 6:** Oscillator typically frequency programmable for up to 100 kHz.

00689009

LIFE SUPPORT POLICY

NATIONAL'S PRODUCTS ARE NOT AUTHORIZED FOR USE AS CRITICAL COMPONENTS IN LIFE SUPPORT DEVICES OR SYSTEMS WITHOUT THE EXPRESS WRITTEN APPROVAL OF THE PRESIDENT AND GENERAL COUNSEL OF NATIONAL SEMICONDUCTOR CORPORATION. As used herein:

1. Life support devices or systems are devices or systems which, (a) are intended for surgical implant into the body, or (b) support or sustain life, and whose failure to perform when properly used in accordance with instructions for use provided in the labeling, can be reasonably expected to result in a significant injury to the user.
2. A critical component is any component of a life support device or system whose failure to perform can be reasonably expected to cause the failure of the life support device or system, or to affect its safety or effectiveness.



National Semiconductor Corporation
Americas
Email: support@nsc.com

National Semiconductor Europe
Fax: +49 (0) 180-530 85 86
Email: europe.support@nsc.com
Deutsch Tel: +49 (0) 69 9508 6208
English Tel: +44 (0) 870 24 0 2171
Français Tel: +33 (0) 1 41 91 8790

National Semiconductor Asia Pacific Customer Response Group
Tel: 65-2544466
Fax: 65-2504466
Email: ap.support@nsc.com

National Semiconductor Japan Ltd.
Tel: 81-3-5639-7560
Fax: 81-3-5639-7507

www.national.com