

DIN / Chassis Mount Brackets

for DC DC Converters

OF117A – 0 to 30 Watts

These special mounting brackets have been developed to accept a wide range of standard DC DC converters for applications requiring either Din Rail or Chassis mounting where a bespoke circuit board is not available. All units come complete with input and output terminals and the provision to fit an LED across the output.



Table 1 – OF117A Converter overview and Pin assignment

Pin Assignment			Pin Number						
DC DC Family	Case Size	Power (W)	1	2	3	4	5	6	7
FDD - Single Output	2" x 2"	12/15	Vi+	Vi-		Vo+		Vo-	
FDD - Dual Output	2" x 2"	12/15	Vi+	Vi-		Vo+	com	Vo-	
IDD - Single Output	2" x 1"	15	Vi+	Vi-		Vo+		Vo-	
IDD - Dual Output	2" x 1"	15	Vi+	Vi-		Vo+	com	Vo-	
WDD - Single Output	2" x 1.6"	15/20/30	Vi+	Vi-	SD	NC	Vo+	Vo-	Trim
WDD - Dual Output	2" x 1.6"	15/20/30	Vi+	Vi-	SD	Vo+	com	Vo-	Trim

2x2, 2x1 Electrical Description

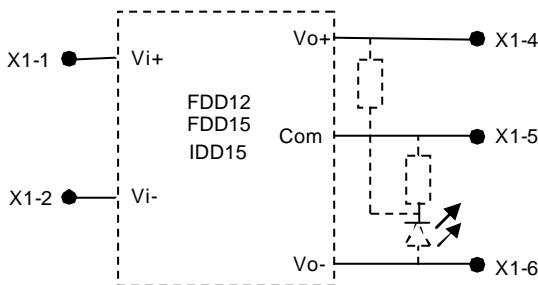


Fig 1 – FDD / IDD circuit diagram

2x1.6 Electrical Description

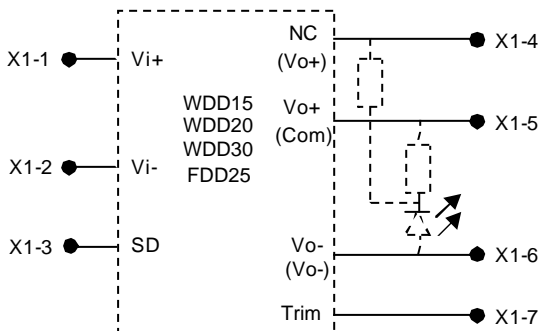


Fig 2 – WDD circuit diagram

Mechanical Description

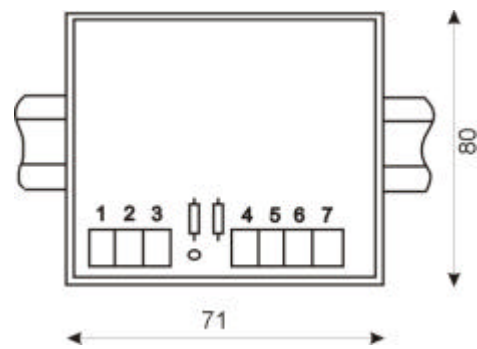


Fig 3 – Din rail mount layout

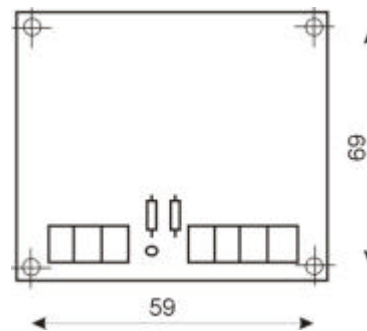


Fig 4 – Chassis mount fixing dimensions

UMB-HDD – 60 to 100 Watts

A special universal mounting bracket has been designed for vertical, horizontal and Din Rail mounting of the HDD series of DC DC converters. Units come complete with a Din Rail mounting shoe, which can be mounted on either face to allow for optimal mounting

