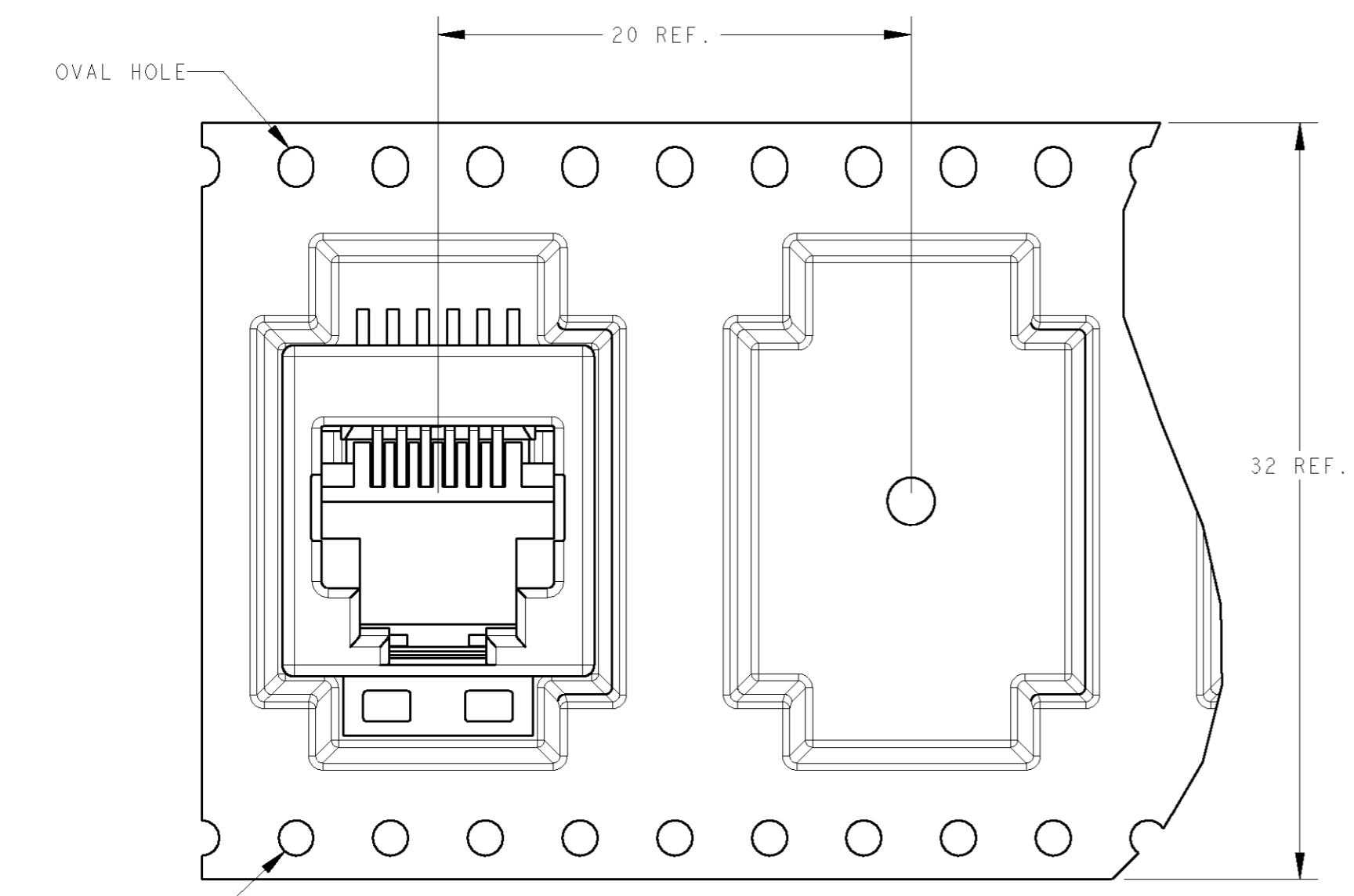
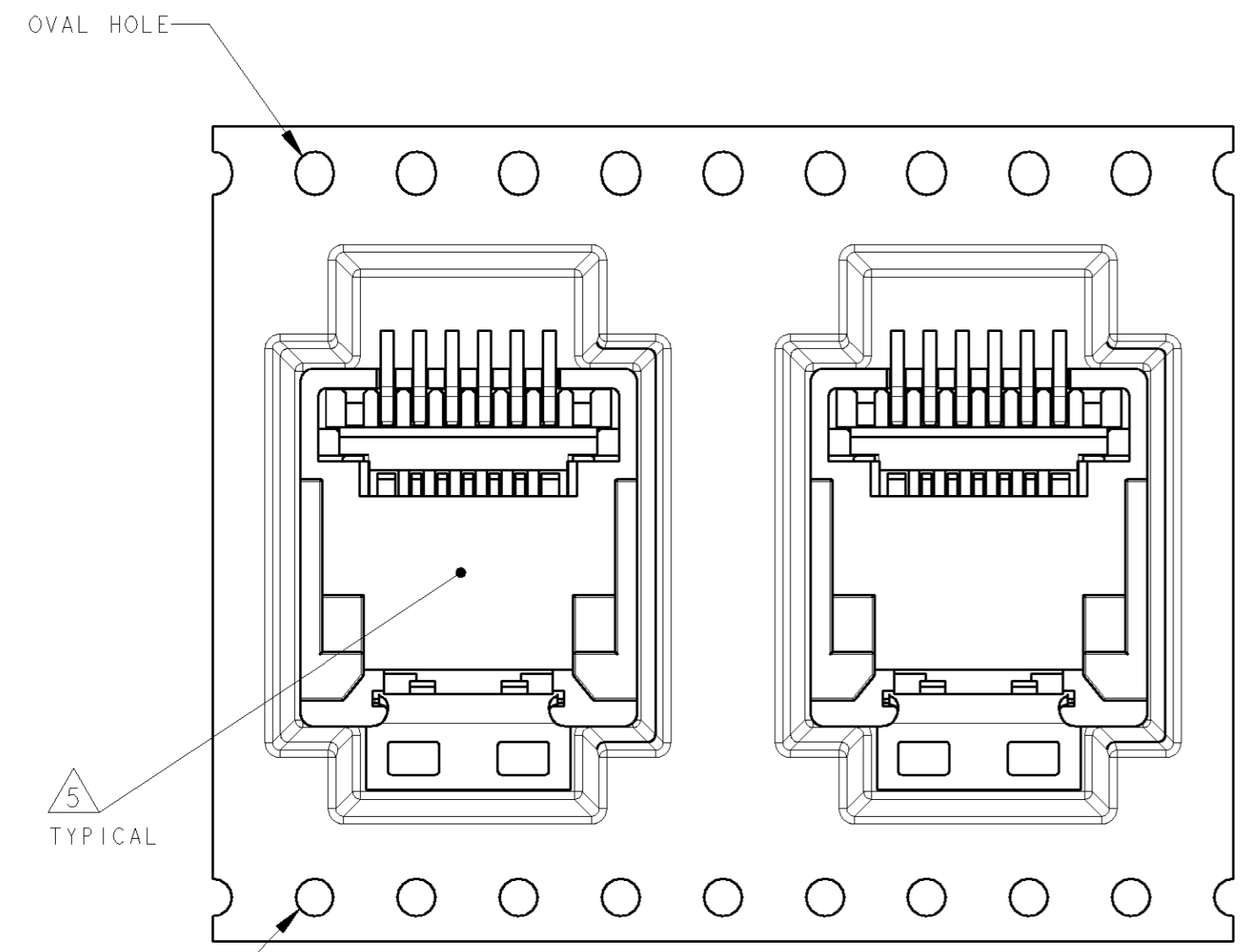


THIS DRAWING IS UNPUBLISHED. RELEASED FOR PUBLICATION .19
 © COPYRIGHT 19 BY AMP INCORPORATED. ALL RIGHTS RESERVED.

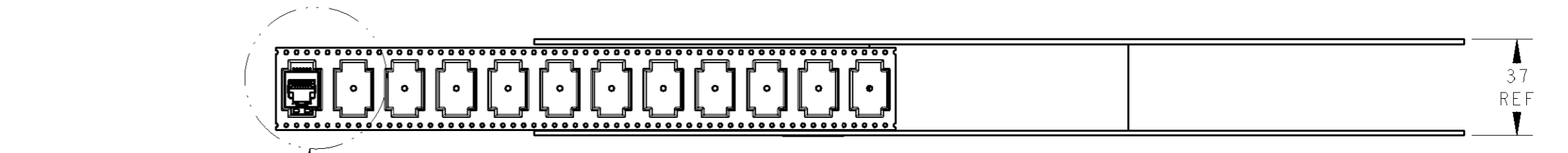
LOC	DIST	REVISIONS			
P	LTR	DESCRIPTION	DATE	DWN	APVD
AA	22	SEE SHEET 1	-	-	-



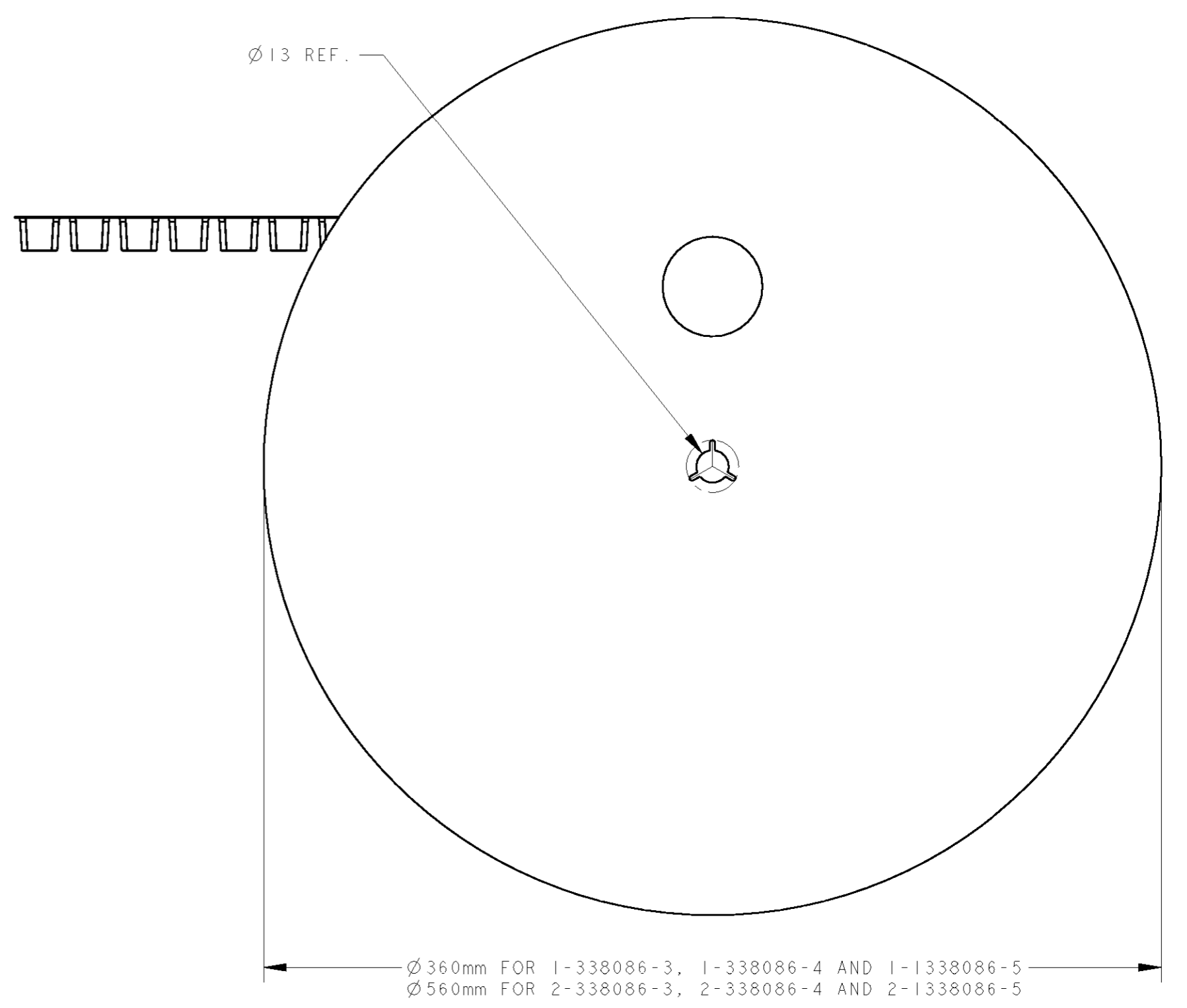
TOP ENTRY ORIENTATION. DETAIL B1 SCALE 4:1



BOTTOM ENTRY ORIENTATION. DETAIL B2 SCALE 4:1



SEE DETAIL B1 & B2



Ø36.0mm FOR 1-338086-3, 1-338086-4 AND 1-1338086-5
 Ø56.0mm FOR 2-338086-3, 2-338086-4 AND 2-1338086-5

THIS DRAWING IS A CONTROLLED DOCUMENT FOR AMP INCORPORATED. IT IS SUBJECT TO CHANGE AND THE CONTROLLING ENGINEERING ORGANIZATION SHOULD BE CONTACTED FOR THE LATEST REVISION.		DWN M.v.ESSEN	15-Oct-96	AMP Tyco Electronics Harrisburg, PA 17105-3608
DIMENSIONS: mm		CHK E.STELLINGA	NAME INVERTIBLE MODULAR JACK ASSEMBLY FOR SURFACE MOUNT APPLICATION 6/6 AND 6/4 POSITION LINE	
TOLERANCES UNLESS OTHERWISE SPECIFIED: 0 PLC ± 1 PLC ± 2 PLC ± 3 PLC ± 4 PLC ± ANGLES ± FINISH -		APVD R.SMEETS	PRODUCT SPEC -	SIZE A2
MATERIAL -		APPLICATION SPEC -	WEIGHT -	CAGE CODE 00779
		CUSTOMER DRAWING	SCALE 1:2	DRAWING NO. C-338086
			SHEET 2	RESTRICTED TO -
			OF 2	REV U

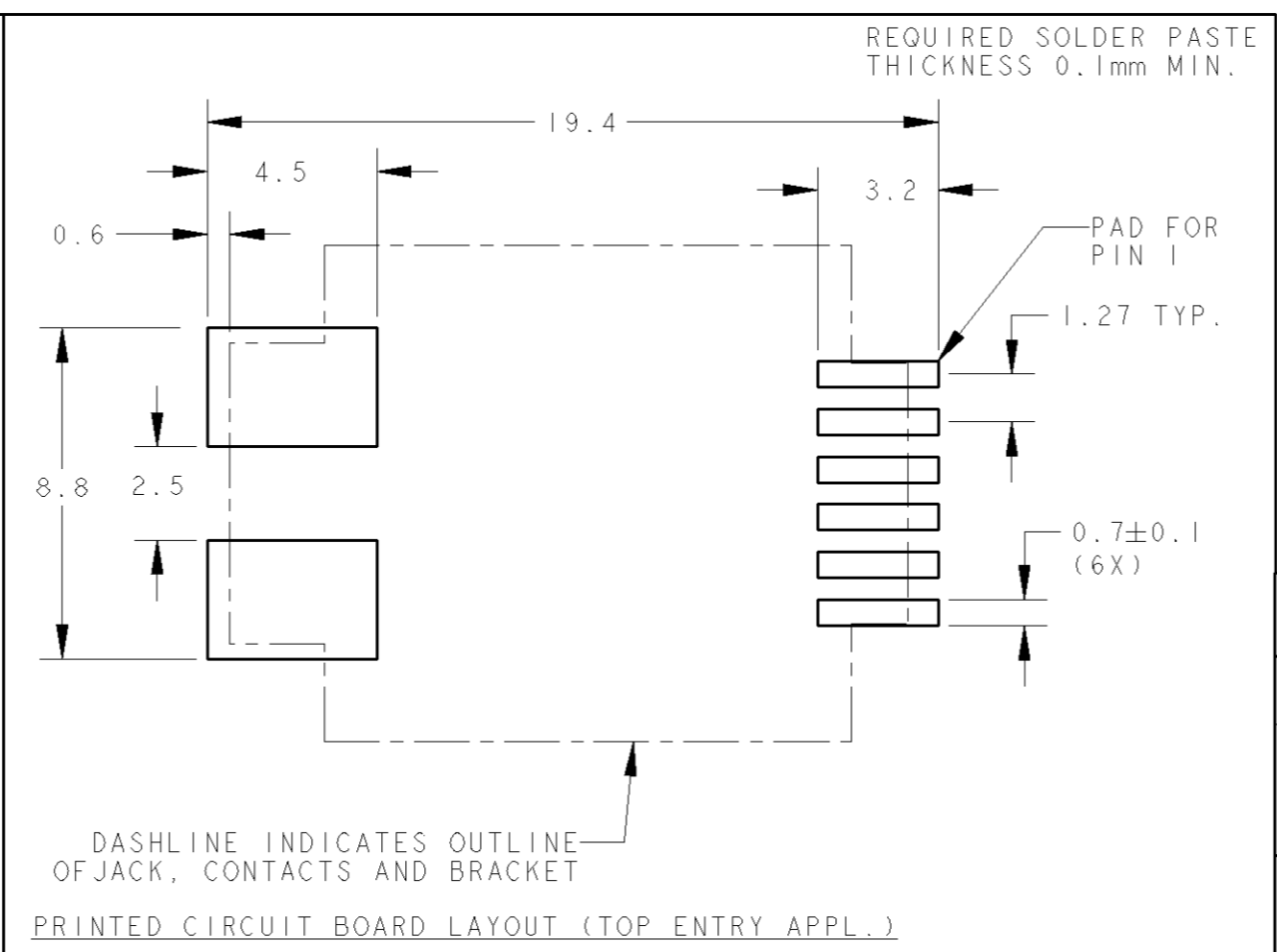
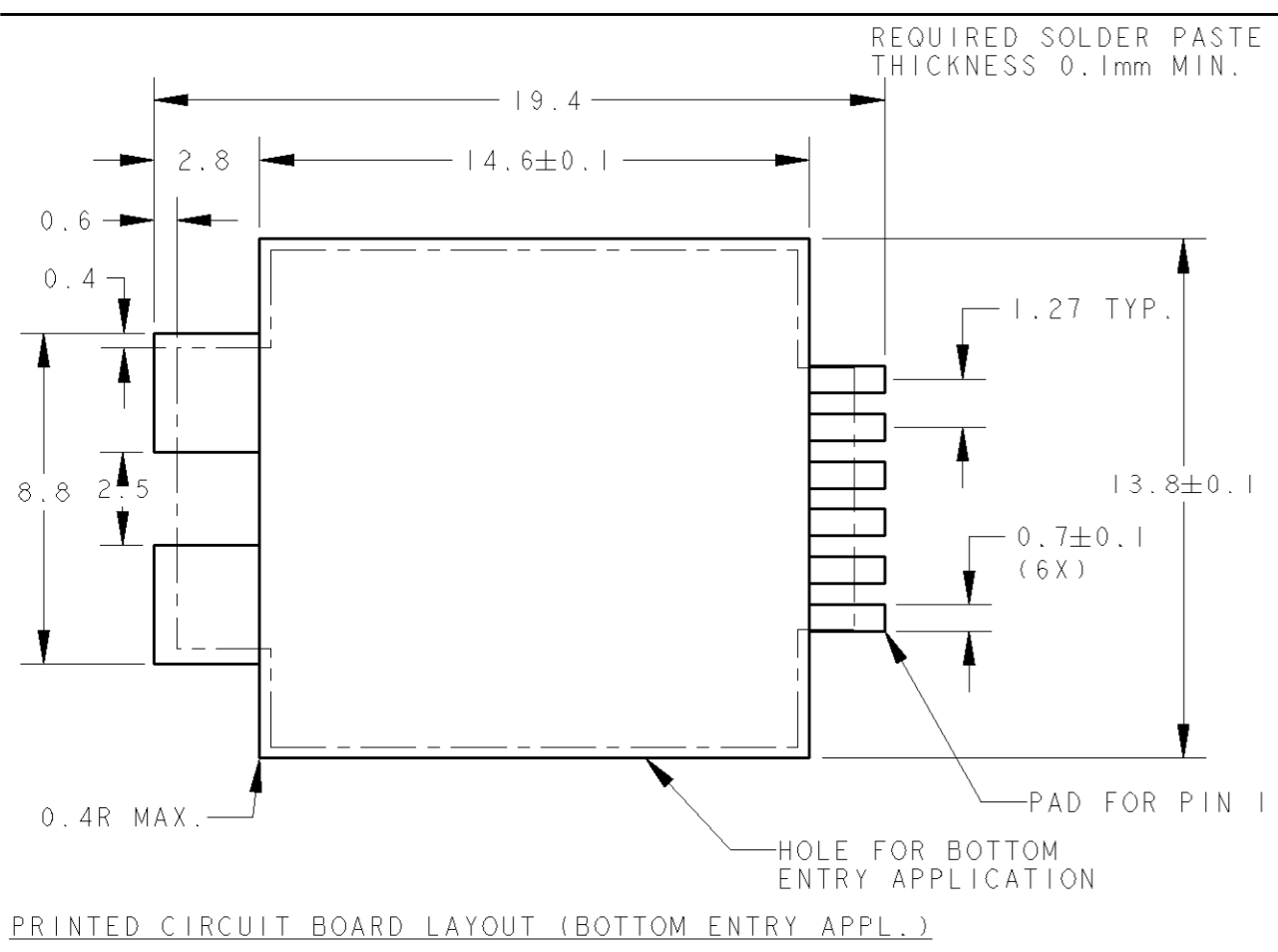
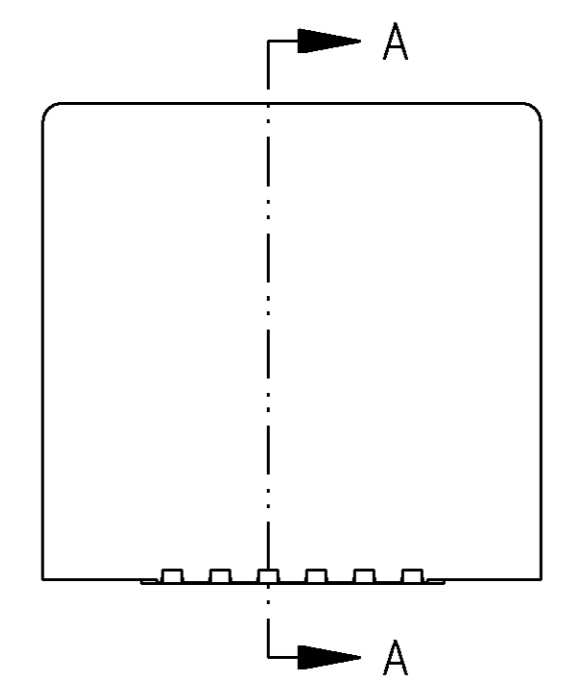
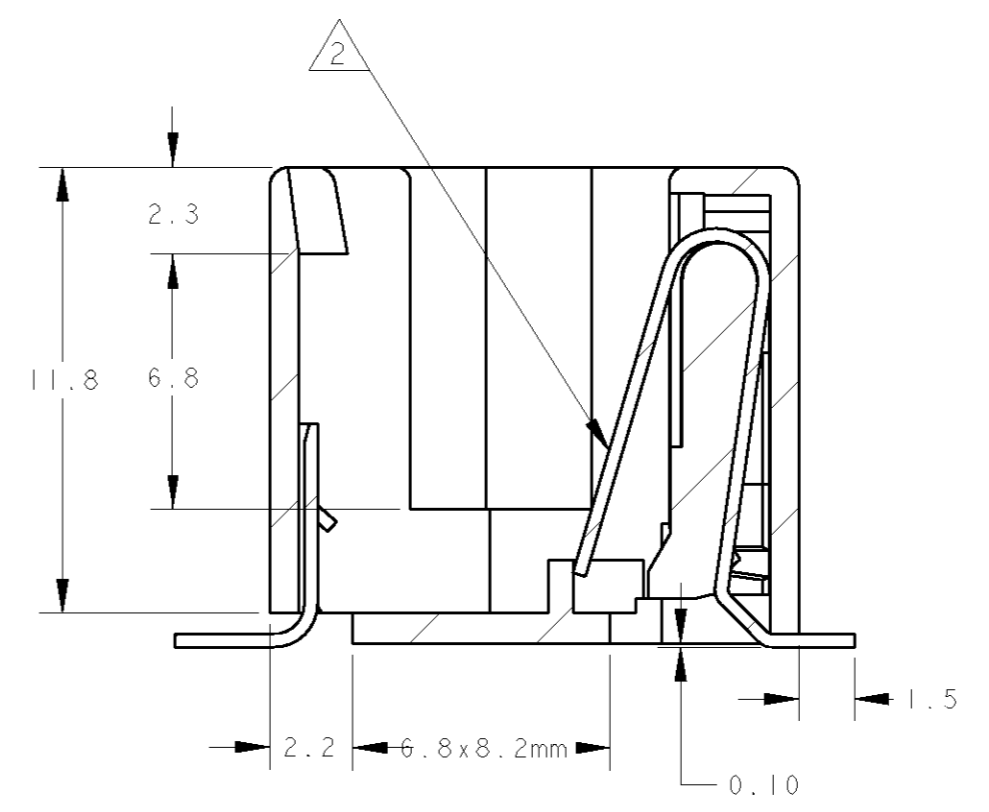
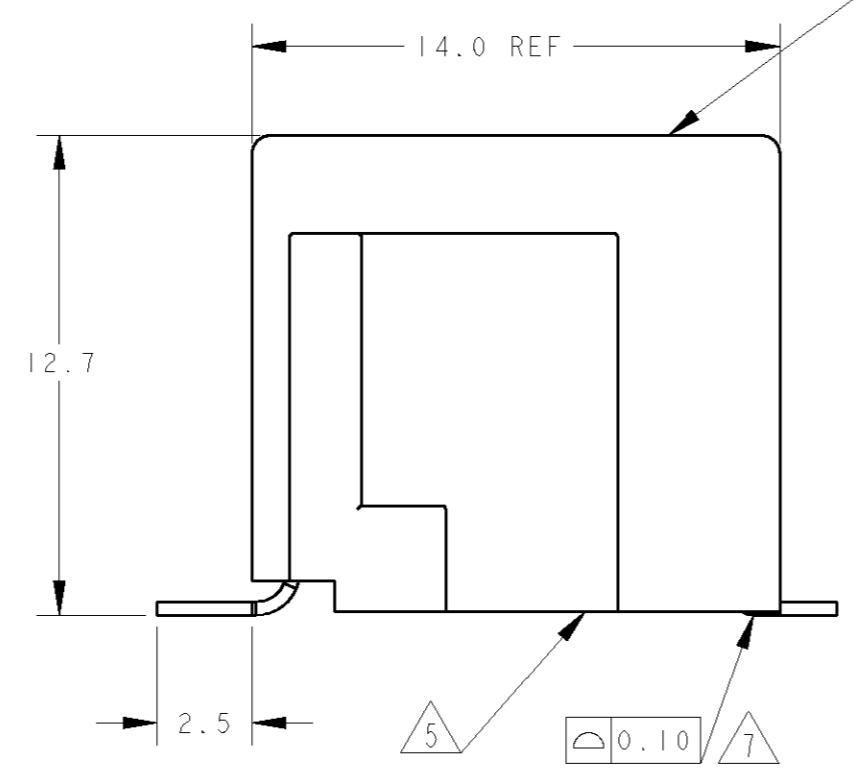
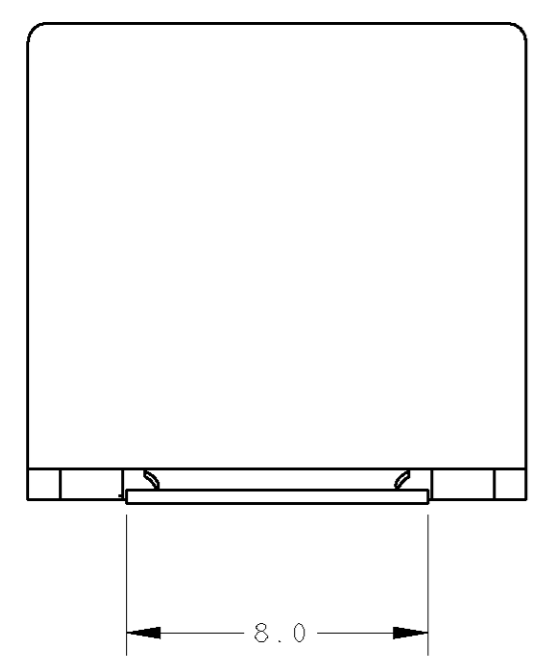
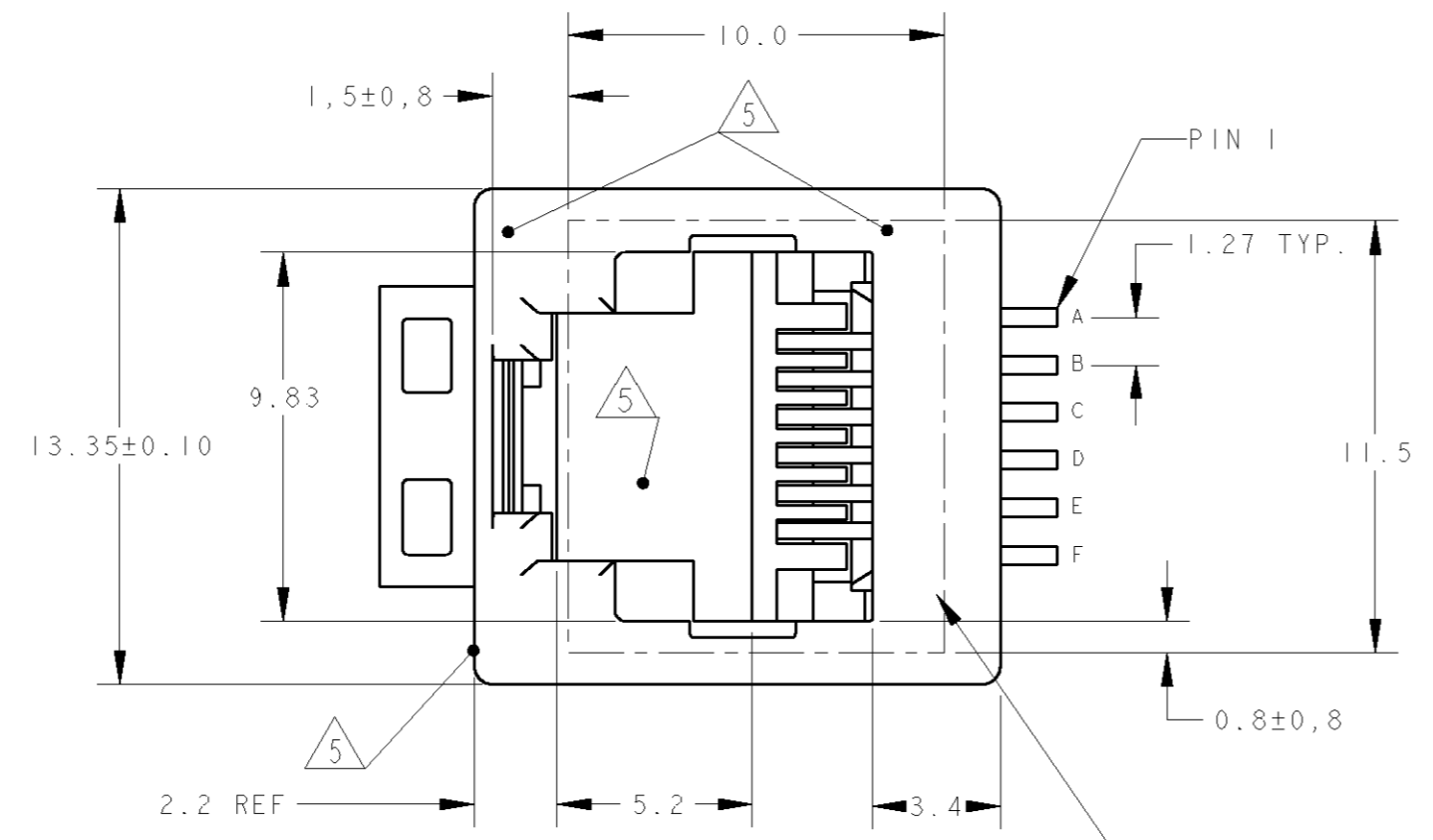
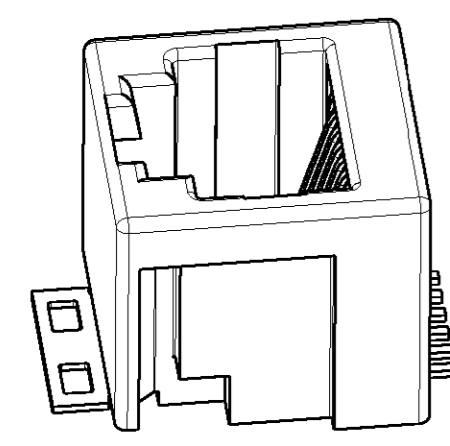
C-338086

THIS DRAWING IS UNPUBLISHED. RELEASED FOR PUBLICATION .19
 © COPYRIGHT 19 BY AMP INCORPORATED. ALL RIGHTS RESERVED.

REVISIONS					
P	LTR	DESCRIPTION	DATE	DWN	APVD
	U	ECR-05-013336	18OCT2005	PW	JB

NOTES:

- 1 TOLERANCES UNLESS OTHERWISE SPECIFIED: ± 0.15 .
- 2 CONTACT PLATING:
 1.27 μ m MIN. GOLD SELECTIVE IN CONTACT AREA,
 OVER 1.27 μ m MIN. NICKEL.
 3.5-5.0 μ m MIN. MATTE TIN ON SOLDER TINES.
- 3 MATERIALS:
 HOUSING: 30% G.F. PA 4.6, COLOR BLACK, UL 94V-0.
 CONTACTS: PHOSPHOR BRONZE
 SOLDER BRACKET: TINPLATED BRASS WITH NICKEL UNDERPLATE.
- 4 THIS JACK CAN ALSO BE APPLIED HANGING THROUGH A HOLE,
 IN A PRINTED CIRCUIT BOARD. SEE LEFT PCB LAYOUT.
- 5 SURFACE CAN BE USED FOR PICKING THE MODULAR JACK WITH,
 TYPE 11 SMD MACHINE.
- 6 ON 1-338086-4 AND 2-338086-4 ONLY CONTACTS B,C,D & E
 ARE INSTALLED.
- 7 COPLANARITY MEASURED AT HEEL OF CONTACTS
 COPLANARITY AT TIPS OF CONTACTS MAX. 0.18 mm
- 8 TAPE AND REEL PACKAGING ACCORDING TO EIA 481-3 SPECIFICATIONS.
- 9 INCLUDES KAPTON TAPE (10x11.5mm)
 ON TOP SURFACE AS PICK AND PLACE FEATURE.



REMARKS	PACKAGING	PART NUMBER
6 POS. / 6 CONT.	750 PCS ON \varnothing 560mm OD REEL. BOTTOM ENTRY ORIENTATION PER DETAIL B2	2-338086-5
6 POS. / 4 CONT.	750 PCS ON \varnothing 560mm OD REEL. TOP ENTRY ORIENTATION PER DETAIL B1	2-338086-4 Δ 6
6 POS. / 6 CONT.	300 PCS ON \varnothing 360mm OD REEL. TOP ENTRY ORIENTATION PER DETAIL B1	2-338086-3
6 POS. / 4 CONT.	300 PCS ON \varnothing 360mm OD REEL. BOTTOM ENTRY ORIENTATION PER DETAIL B1	1-338086-7 Δ 9
6 POS. / 6 CONT.	300 PCS ON \varnothing 360mm OD REEL. BOTTOM ENTRY ORIENTATION PER DETAIL B2	1-338086-6 Δ 9
6 POS. / 6 CONT.	300 PCS ON \varnothing 360mm OD REEL. BOTTOM ENTRY ORIENTATION PER DETAIL B2	1-338086-5
6 POS. / 4 CONT.	300 PCS ON \varnothing 360mm OD REEL. TOP ENTRY ORIENTATION PER DETAIL B1	1-338086-4 Δ 6
6 POS. / 6 CONT.	300 PCS ON \varnothing 360mm OD REEL. TOP ENTRY ORIENTATION PER DETAIL B1	1-338086-3

THIS DRAWING IS A CONTROLLED DOCUMENT FOR AMP INCORPORATED. IT IS SUBJECT TO CHANGE AND THE CONTROLLING ENGINEERING ORGANIZATION SHOULD BE CONTACTED FOR THE LATEST REVISION.

DWN: E.v.ELJK 22-Nov-96
 CHK: E.STELLINGA DEC.'96
 APVD: R.SMEETS

PRODUCT SPEC: 108-19117
 APPLICATION SPEC: 114-19041
 WEIGHT: 1.83 gr

AMP Tyco Electronics
 Harrisburg, PA 17105-3608

NAME: INVERTIBLE MODULAR JACK ASSEMBLY FOR SURFACE MOUNT APPLICATION 6/6 AND 6/4 POSITION LINE

MATERIAL: SEE NOTE 3
 FINISH: SEE NOTE 2

SIZE: A2
 CAGE CODE: 00779
 DRAWING NO: C-338086
 RESTRICTED TO: -

CUSTOMER DRAWING SCALE: 1:1 SHEET 2 OF 2 REV U

C-338086