

PST 1,3/ 2-5,0

Order No.: 1933189

The figure shows a 10-position version of the product

<http://eshop.phoenixcontact.net/phoenix/treeViewClick.do?UID=1933189>Header, Nominal current: 12 A, Nom. voltage: 250 V, Pitch: 5 mm,
Number of positions: 2, Color: black, Assembly: Soldering

Commercial data

| | |
|--------------------------|--------------------|
| EAN | 4017918918675 |
| Pack | 50 pcs. |
| Customs tariff | 85366990 |
| Weight/Piece | 0.000395 KG |
| Catalog page information | Page 480 (CC-2009) |

Product notes

WEEE/RoHS-compliant since:
01/01/2003

<http://www.download.phoenixcontact.com>
Please note that the data given here has been taken from the online catalog. For comprehensive information and data, please refer to the user documentation. The General Terms and Conditions of Use apply to Internet downloads.

Technical data

Dimensions / positions

| | |
|---------------------|--------|
| Length | 2.8 mm |
| Pitch | 5 mm |
| Dimension a | 5 mm |
| Number of positions | 2 |
| Pin dimensions | 1,3 mm |

| | |
|------------------------------------|---------------------------------|
| Hole diameter | 1.5 mm |
| Technical data | |
| Insulating material group | IIIa |
| Rated surge voltage (III/3) | 4 kV |
| Rated surge voltage (III/2) | 4 kV |
| Rated surge voltage (II/2) | 4 kV |
| Rated voltage (III/2) | 320 V |
| Rated voltage (II/2) | 400 V |
| Connection in acc. with standard | EN-VDE |
| Nominal current I_N | 12 A (depends on the plug used) |
| Nominal voltage U_N | 250 V |
| Maximum load current | 12 A (depends on the plug used) |
| Insulating material | PA |
| Inflammability class acc. to UL 94 | V0 |

Certificates / Approvals



Certification

CCA, CUL, GOST, SEV, UL

CUL

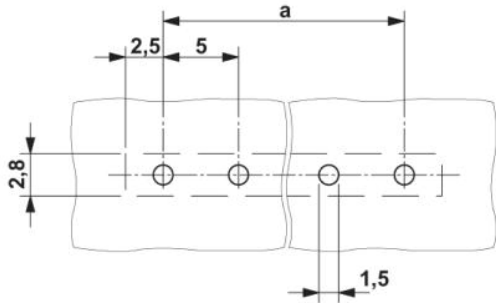
| | |
|-----------------------|-------|
| Nominal voltage U_N | 300 V |
| Nominal current I_N | 10 A |

UL

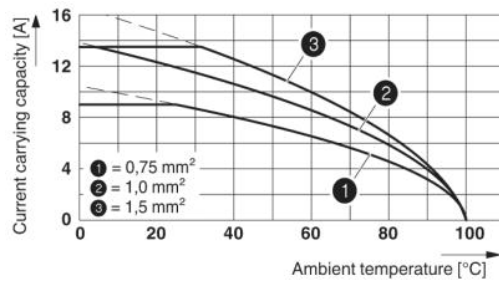
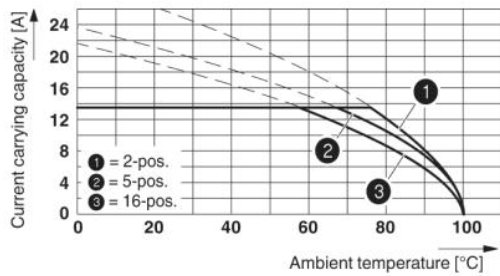
| | |
|-----------------------|-------|
| Nominal voltage U_N | 300 V |
| Nominal current I_N | 10 A |

Diagrams/Drawings

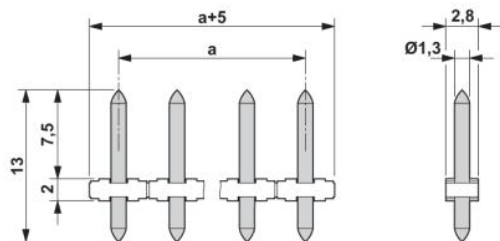
Drilling plan/solder pad geometry



Diagram



Dimensioned drawing



Address

PHOENIX CONTACT GmbH & Co. KG
Flachsmarktstr. 8
32825 Blomberg, Germany
Phone +49 5235 3 00
Fax +49 5235 3 41200
<http://www.phoenixcontact.com>



© 2010 Phoenix Contact
Technical modifications reserved;