

## LPT50 Series

50 Watts

**Total Power:** 47 - 55 Watts  
**Input Voltage:** 90-264 VAC  
127-300 VDC  
**# of Outputs:** Triple



### Special Features

- Universal input
- 2" x 4" footprint
- Overpower and short circuit protection
- High efficiency
- High MTBF
- Built in EMI filter (CISPR 22 Class B)
- LED power good indicator
- Input power <74 watts
- Complies with EN61000-3-2
- UL Class I approved

### Safety

**UL** UL 60950-1  
**CSA** CSA-C22.2 No. 60950-1  
**TUV** EN60950-1  
**CB** Certificate and report  
**CE** LVD & EMC

## Electrical Specifications

### Input

|                               |  |
|-------------------------------|--|
| Input range                   | 90-264 VAC (wide range) 127-300 VDC  |
| Frequency                     | 47-440 Hz  |
| Inrush current                | <60 A peak @ 230 VAC, cold start @ 25°C                                      |
| Efficiency                    | 80% typical at full load   |
| EMI RFI                       | FCC Class B conducted; CISPR 22 Class B conducted: EN55022 Class B conducted |
| Safety ground leakage current | 0.5mA @ 50/60 Hz, 264 VAC input  |

### Output

|                        |   |
|------------------------|---|
| Maximum power          | 55 W for convection (LPT51, 47.4W)  |
| Hold-up time           | 10/20 ms 115/230 VAC input line   |
| Overpower protection   | Short circuit protection on all outputs<br>Case overpower protected @ 110-160% of normal rating |
| Overvoltage protection | 30-50% above nominal output   |

## Environmental Specifications

|                                 |   |
|---------------------------------|---|
| Operating temperature:          | 0° to 50°C ambient. Derate each output 2.5% per degree from 50° to 70°C. -20°C start up |
| Storage temperature:            | -40°C to +85°C  |
| Electromagnetic susceptibility: | Designed to meet EN61000-4; -2, -3, -4, -5, -6, -8, -11 Level 3                         |
| Humidity:                       | Operating; non-condensing 10% to 95% RH   |
| Vibration:                      | IEC68-2-6 to the levels of IEC721-3-2   |
| MTBF demonstrated:              | >550,000 hours at full load and 25°C ambient conditions                                 |



## Ordering Information

| Model Number | Output Voltage | Minimum Load | Maximum Load with Convection Cooling | Peak Load <sup>1</sup> | Regulation <sup>2</sup> | Ripple P/P (PAR <sup>D</sup> ) <sup>3</sup> |
|--------------|----------------|--------------|--------------------------------------|------------------------|-------------------------|---|
| LPT51        | +3.3V          | 0.8A         | 8A                                   | 9A                     | ±2%                     | 50 mV                                       |
|              | +5V            | 0.1A         | 3A                                   | 4A                     | ±6%                     | 50mV  |
|              | +12V           | 0A           | 0.5A                                 | 1A                     | ±5%                     | 120mV                                       |
| LPT52        | +5V            | 0.5A         | 8A                                   | 9A                     | ±2%                     | 50 mV                                       |
|              | +12V           | 0.1A         | 3A                                   | 4A                     | ±5%                     | 120mV                                       |
|              | -12V           | 0A           | 0.5A                                 | 1.0A                   | ±5%                     | 120mV                                       |
| LPT53        | +5V            | 0.5A         | 8A                                   | 9A                     | ±2%                     | 50 mV                                       |
|              | +15V           | 0.1A         | 2.4A                                 | 3.2A                   | ±5%                     | 150mV                                       |
|              | -15V           | 0A           | 0.5A                                 | 0.7A                   | ±5%                     | 150mV                                       |
| LPT54        | +5V            | 0.5A         | 8A                                   | 9A                     | ±2%                     | 50 mV                                       |
|              | +24V           | 0.1A         | 1.5A                                 | 2A                     | ±7%                     | 240mV                                       |
|              | +12V           | 0A           | 0.5A                                 | 0.7A                   | ±5%                     | 120mV                                       |

1. Peak current lasting <15 seconds with a maximum 10% duty cycle.
2. At 25°C including initial tolerance, line voltage, load currents and output voltages adjusted to factory settings.
3. Peak-to-peak with 20 MHz bandwidth and 10 μF (tantalum capacitor) in parallel with a 0.1 μF capacitor at rated line voltage and load ranges.

## Pin Assignments

| Connector | LPT51   | LPT52   | LPT53   | LPT54   |
|-----------|---------|---------|---------|---------|
| SK1-1     | Line    | Line    | Line    | Line    |
| SK1-3     | Neutral | Neutral | Neutral | Neutral |
| SK2-1     | +3.3 V  | +5 V    | +5V     | +5V     |
| SK2-2     | +3.3 V  | +5 V    | +5V     | +5V     |
| SK2-3     | Common  | Common  | Common  | Common  |
| SK2-4     | Common  | Common  | Common  | Common  |
| SK2-5     | 12V     | -12V    | -15V    | +12V    |
| SK2-6     | 5V      | +12V    | +15V    | +24     |

## Mating Connectors

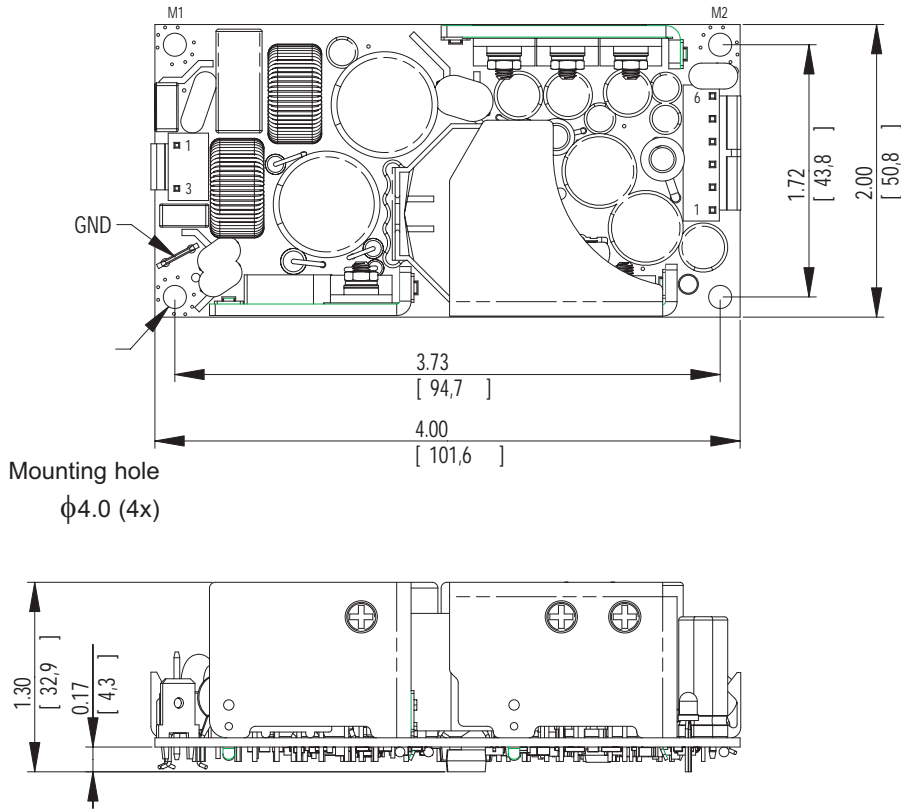
**AC Input:** Molex 09-50-8031 (USA)  
09-91-0300 (UK)  
PINS: 08-52-0113

**DC Outputs:** Molex 09-50-8061 (USA)  
09-91-0600 (UK)  
PINS: 08-52-0113

Astec Connector Kit #70-841-006, includes all of the above

1. Specifications subject to change without notice.
2. All dimensions in inches (mm), tolerance is ±0.02" (±0.5mm)
3. Mounting holes M1 and M2 should be grounded for EMI purposes.
4. Mounting hole M1 is safety ground connection.
5. Specifications are for convection rating at factory settings at 115 VAC input, 25°C unless otherwise stated.
6. Warranty: 1 year
7. Weight: 0.45lbs/0.20kg

Mechanical Drawing



Astec Power

5810 Van Allen Way  
Carlsbad, CA 92008  
USA  
Telephone: +1 760 930 4600  
Facsimile: +1 760 930 0698  
Technical Support: +1 888 41 ASTEC  
or +1 407 241 2752

Waterfront Business Park  
Merry Hill, Dudley  
West Midlands, DY5 1LX  
United Kingdom  
Telephone: +44 (0) 1384 842 211  
Facsimile: +44 (0) 1384 843 355

Units 2111-2116, Level 21  
Tower 1, Metroplaza  
223, Hing Fong Road  
Kwai Fong, New Territories  
Hong Kong  
Telephone: +852 2437 9662  
Facsimile: +852 2402 4426

For global contact, visit:

[www.astecpower.com](http://www.astecpower.com)  
[technicalsupport@astec.com](mailto:technicalsupport@astec.com)

While every precaution has been taken to ensure accuracy and completeness in this literature, Astec Power assumes no responsibility, and disclaims all liability for damages resulting from use of this information or for any errors or omissions.

Printed in USA

Emerson Network Power.

The global leader in enabling  
business-critical continuity.

- AC Power
- Connectivity
- DC Power
- **Embedded Power**
- Inbound Power
- Integrated Cabinet Solutions
- Outside Plant
- Precision Cooling
- Site Monitoring and Services

[EmersonNetworkPower.com](http://EmersonNetworkPower.com)