

Drq. No.: 1059600495

Title: SPECIFICATION

Used On: 59600-495

DESCRIPTION: - Single Pole Form A Proximity Device.  
CONSTRUCTION: - Encapsulated in a Moulded Plastic Body.

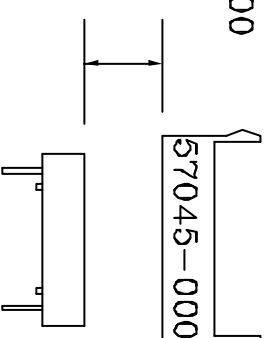
CUSTOMER: -  
CUSTOMER DRG. No.: -

ELECTRICAL

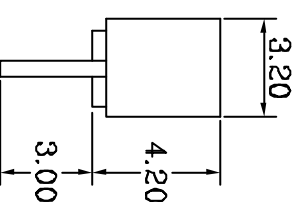
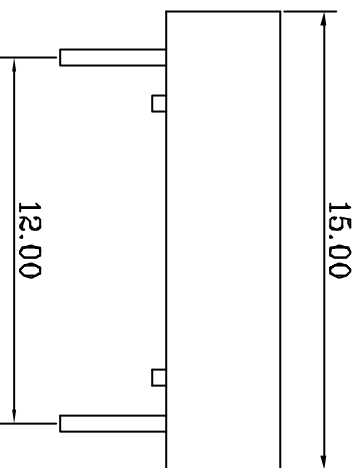
Maximum Switched Current	0.5A
Maximum Switched Voltage	200Vdc
Maximum Switched Power	10W
Maximum Initial Contact Resistance	
Maximum Carry Current (inc. leadouts)	100m Ω
Minimum Insulation Resistance	0.8A
Min. Voltage Holdoff	10 <sup>10</sup> Ω
	250Vdc

PHYSICAL

Body Material: -	Celanex - Black
Encapsulant: -	Urethane - Black
Leadouts: -	∅0.47mm, Tinned
Operation	
Actuator: -	57045-000
Operate Distance: -	> 2mm
Release Distance: -	< 14mm



FOR CONDITIONS OF TESTING REFER TO DRG. No. 30.003  
GENERAL TOLERANCES ±0.13mm UNLESS STATED OTHERWISE



MOD. No.	DATE	ISSUE No.	MOD. No.	DATE	ISSUE No.

<p>© HAMILIN ELECTRONICS (EUROPE) LTD. 2002</p> <p>THIS DESIGN AND PRINT IS COPYRIGHT AND IS THE PROPERTY OF HEEL. IT MUST NOT BE COPIED OR PERMITTED TO BE COPIED, NOR MUST ITS CONTENTS BE DIVULGED TO ANY THIRD PARTY WITHOUT PRIOR WRITTEN PERMISSION FROM THE COMPANY.</p>	<p>Drawn <i>PA</i></p> <p>Issued</p>	<p>Doc. Ret. Code: D</p> <p>Sheet 1 of 1 Sheet(s)</p> <p>Dimensions: mm</p> <p>Date: 09.12.02</p> <p>Scale: 4 : 1</p> <p>File: A</p>
---	--------------------------------------	--

Drq. No.: 1059600495