

POWERWHITE LINEAR MODULES



FEATURES / BENEFITS

- ▲ Fully modular linear arrays of ultra high brightness LEDs
- ▲ Utilizes the latest 80+ lumen LUXEON® Rebel™ LEDs for cool white, 70+ lumen for neutral white & 50+ lumen for warm white
- ▲ Choice of color temperatures & optical patterns
- ▲ >70% lumen maintenance @ 60,000 hours at max acceptable ambient temperature
- ▲ Lifesaver® thermal protection

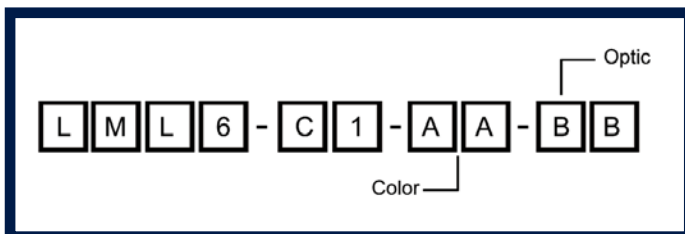
OPERATING CONDITIONS

- ▲ Operating ambient temperature -30°C to +55° (@350mA)
- ▲ Requires constant current driver
- ▲ Compatible drivers include Dialight Lumidrives PWD60-35-70
Runs 3-8 modules @ 350mA, 2-4 modules @700mA
- ▲ Additional heatsinking required when driven @ 700mA

APPLICATION

- ▲ Linear lighting
- ▲ Accent lighting
- ▲ Flood lighting
- ▲ Street & area lighting
- ▲ General illumination

ORDERING INFORMATION



MATERIALS / FINISH

- ▲ Six premium flux LUXEON Rebel LEDs per module
- ▲ Anodized cast aluminum heatsink
- ▲ Polycarbonate cover
- ▲ Dialight-Lumidrives optics
- ▲ Modular quick connect cables
- ▲ Module to module connector cable included

Color (A)

CW = Min 80 lumen 'v bin'
Cool white 5300K

NW = Min 70 lumen 's bin'
Neutral white 3950K

WW = Min 50 lumen 'n bin'
Warm white 2950K

Optic (B)

SP = 5 degree spot

MD = 15 degree spot

WD = 25 degree wide

OV = 5X20 degree oval

FR = 7 degree frosted spot

Connectors (sold separately)

LML6-CON-CAB =
Entry cable, driver to 1st module

LML6-TER-CAB =
End plug (required)

* Cables use 0.5mm² AWG12 wires

Dialight-Lumidrives Ltd.

York House • Wetherby Road • Long Marston, York, YO26 7NH
Tel: +44(0) 1904 739150 • Fax: +44(0) 1904 737926 • www.dialight.com



Dialight Corporation

1501 Route 34 South • Farmingdale, NJ 07727 USA
Tel: (1) 732-919-3119 • Fax: (1) 732-751-5778 • www.dialight.com



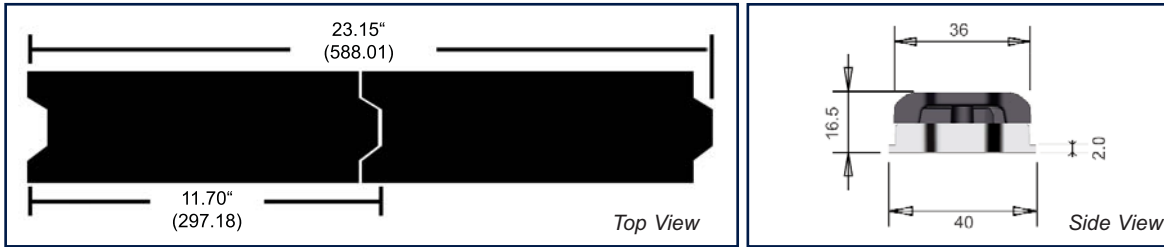
MDEXLUMPWM_A

MECHANICAL DIMENSIONS

11.7" x 1.498" x 0.585"
(297.18mm x 38.05mm x 14.86mm)

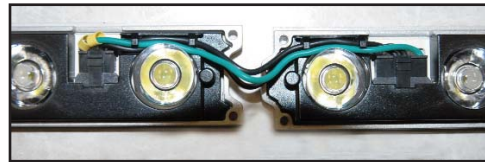
Mounting hole spacing = 3.22" (81.8mm)
Max screw size #8

Total length for "Z" units connected end to end =
(Z x 11.7) - ((Z-1) x 0.25) (inches)
(Z x 297.2) - ((Z-1) x 6.35) (mm)



Example: 2 units total length = 23.15" (588.01)

ASSEMBLY INFORMATION



1) Position 'tab' end of first powerwhite module by input wires/driver. (**Do not connect power to entry cable before completing steps 2-6**)

2) Remove cover from module (**Do not remove mask**). Modules may be screwed down onto surface by inserting two M6 or 8/32 flathead screws through screw holes.

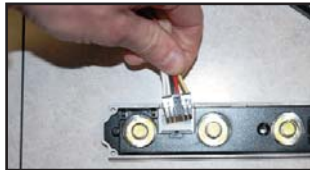
3) Insert 6 pin prong from LML6-CON-CAB entry cable into 6 prong receptacle near tab end of first module.

4) Insert 4 pin prong from connector cable into 'notch' end of module, insert 6 pin prong from connector cable into 'tab' end of next module (repeat for each additional module).

5) Connector cable wires can be routed through interior of modules by placing them into interior wire holders.

6) Insert LML6-TER-CAB 4-pin terminal prong into 'notch' end of last module in run (required).

7) Replace covers and connect power to LM60-CON-CAB



INPUT WIRE CHART

Color wire on A50-LML6-CON-CAB entry cable	To. or	Connect to on PWD60-35-70
White 1	Thermistor	Wire 5
White 2	Thermistor	Wire 6
Red	Driver +	Wire 2 350mA Wires 1 & 2 700mA
Black	Driver -	Wire 3
Green	Ground	Green / Yellow Stripe

Dialight-Lumidrives Ltd.

York House • Wetherby Road • Long Marston, York, YO26 7NH

Tel: +44(0) 1904 739150 • Fax: +44(0) 1904 737926 • www.dialight.com



PHOTOMETRIC DATA

TBD
IES 32 files available, consult factory

Dialight Corporation

1501 Route 34 South • Farmingdale, NJ 07727 USA

Tel: (1) 732-919-3119 • Fax: (1) 732-751-5778 • www.dialight.com



MDEXLUMPWM_A