

Power Relay RM C/D

1 pole 30 A, DC- or AC-coil



F0166-A

Features

- 1 N/O or 1 N/O + 1 N/C contact
- Switching capacity up to 7200 VA
- DC- or AC-coil
- Push-to-test-button
- Chassis mount

Applications

Battery chargers, heating control

Contact data	RMC	RMD
Configuration	1 N/O and 1N/C	1 N/O
Type of contact	single contact, bridging contact	
Rated current	30 A	
Rated voltage / max.breaking voltage AC	250 Vac / 380 Vac / 440 Vac	
Maximum breaking capacity AC	7500 VA	
Make current (max. 4 s at duty cycle 10%)	60 A	
Contact material	AgCdO	

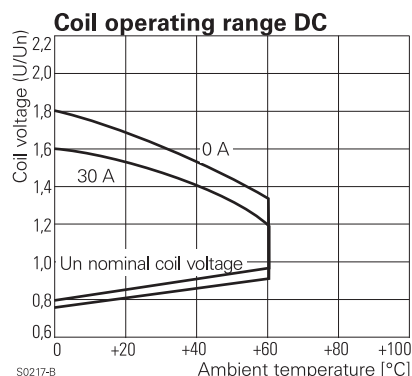
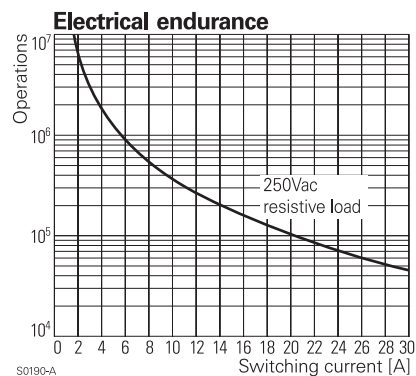
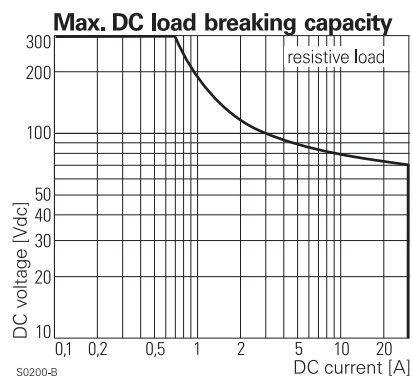
Coil data		
Nominal voltage	DC coil	6...220 Vdc
	AC coil	6...400 Vac
Nominal coil power	DC coil	1.2 W
	AC coil	2.8 VA

Coil versions, DC-coil, RMC, RMD

Coil code	Nominal voltage	Pull-in voltage	Release voltage	Coil resistance	Coil current
STD	Vdc	Vdc	Vdc	Ω	mA
006	6	4.5	0.6	32±10%	187.5
012	12	9.0	1.2	110±10%	109.1
024	24	18.0	2.4	475±10%	50.5
048	48	36.0	4.8	2000±10%	24.0
060	60	45.0	6.0	2850±10%	21.1
110	110	82.5	11.0	10000±12%	11.0
221	220	165.0	22.0	40000±15%	5.5

All figures are given for coil without preenergization, at ambient temperature +20°C

* Protection diode PD; standard polarity: +A1 / -A2



Power Relay RM C/D

1 pole 30 A, DC- or AC-coil

Coil versions, AC-coil, RMC, RMD

Coil code	LED	Nominal voltage Vac	Pull-in voltage Vac	Release voltage Vac	Coil resistance Ω	Coil current mA
524	R24	24	19.2	9.6	80±10%	109.2
548	R48	48	38.4	19.2	320±10%	54.2
560	R60	60	48.0	24.0	500±10%	43.7
615	S15	115	92.0	46.0	1850±10%	23.0
730	T30	230	184.0	92.0	7500±10%	11.7
900	V00	400	320.0	160.0	23500±15%	6.5

All figures are given for coil without preenergization, at ambient temperature +20°C

Insulation

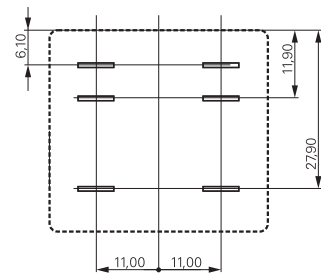
Dielectric strength	coil-contacts	2500 V_{rms}
	open contact circuit	1500 V_{rms}
	adjacent contacts	4000 V_{rms}
Clearance / creepage		$\geq 2.8 / 4$ mm
Insulation to VDE 0110b (2/79)		
Insulation category / reference voltage		C / 250

Other data

Ambient temperature	DC-coil	-45...+60 °C
	AC-coil	-45...+40 °C
Mechanical life		>10x10 ⁶ operations
Max. switching rate at rated- / minimum load		16 min ⁻¹ / 100 min ⁻¹
Operate- / release time		approx. 17 / 18 ms
Bounce time		approx. 4 ms
Vibration resistance N/O / N/C contact		>10 / 5 g, 30...150 Hz
Category of protection (IEC 61810)		RT I - dust protected
Relay weight		81 g
Packaging unit		10 pcs.

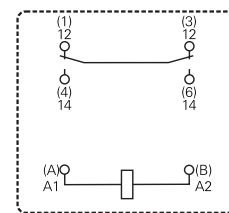
Terminal assignment

View on solder pins
Dimensions in mm



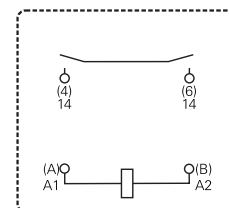
S0269-AK

1 N/O and 1 N/C contact, RMC



S0269-AH

1 N/O contact, RMD



S0269-AI

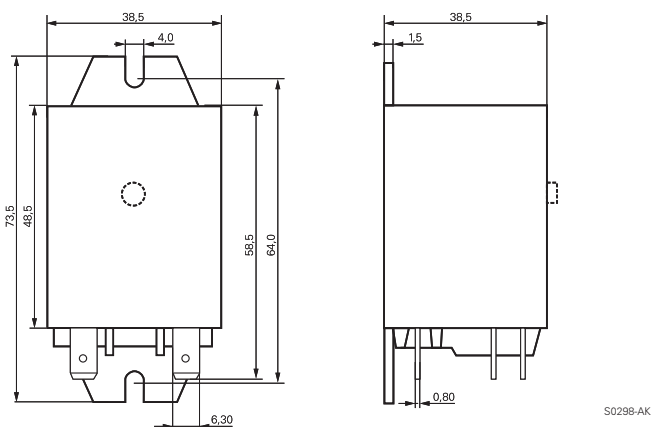
Power Relay RM C/D

1 pole 30 A, DC- or AC-coil

Dimensions

Dimensions in mm

Cover with mounting brackets, FASTON 250



Product key

R M **5**

Type

Contacts

C 1 N/O contact and 1 N/C contact, 30 A

D 1 N/O contact, 30 A

Version

0 without test button

3 with test button

Mounting

5 cover with mounting brackets, AMP-Faston 250

Coil

Coil code: please refer to coil versions table, preferred types in bold print

AMP-Faston 250 = 6.3 x 0.8 mm

Product key	Contacts	Version	Enclosure	Coil	Coil	Part number
RMC05024	1 N/O + 11 N/C contact 30 A	without	mounting brackets AMP 250	DC-coil	24 Vdc	4-1393844-5
RMC05524		test button		AC-coil	24 Vac	0-1393146-5
RMC05615					115 Vac	8-1393147-7
RMC05730					230 Vac	0-1393146-6
RMC35024		with test button		DC-coil	24 Vdc	0-1393146-7
RMD05024	1 N/O contact 30 A	without			24 Vdc	0-1393146-9
RMD05524		test button		AC-coil	24 Vac	1-1393146-1
RMD05615					115 Vac	0-1415009-1
RMD05730					230 Vac	4-1393844-7
RMD35024		with		DC-coil	24 Vdc	2-1419136-2
RMD35730		test button		AC-coil	230 Vac	0-1393097-5