

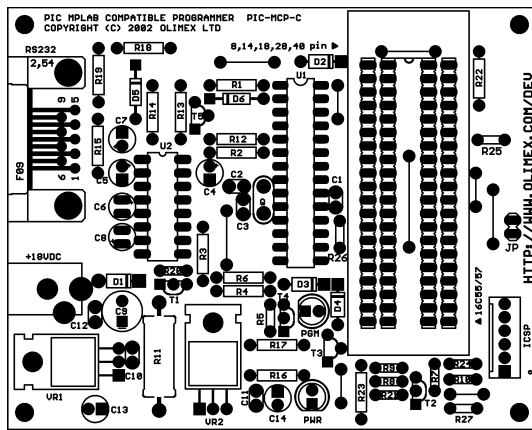
# PIC-MCP-C MPLAB® COMPATIBLE PIC MICROCONTROLLER PROGRAMMER

## What is PIC-MCP?

PIC-MCP is MPLAB® compatible programmer for PICmicro microcontrollers. It's microcontroller development programmer that enables you to program user software into PICmicro microcontroller devices (DIP packages only). PIC-MCP is low cost replacement for Microchip PicStart+® programmer, it programs faster than PicStart+® and have ICSP connector for in-circuit programming of PICmicro microcontrollers.

Note: PIC-MCP Programmer is designed for use in firmware development and is not intended for production use.

## What PIC-MCP package contains?



The PIC-MCP package contain completely assembled and tested board with RS232 port, ZIF socket and ICSP connector + ICSP cable which is compatible with all Olimex's PIC-Pxx prototype boards.

The package doesn't include RS232 cable and power supply adapter 18VDC.

The latest MPLAB software can be free download from Microchip's web site <http://www.microchip.com>.

## What PIC-MCP does?

The PIC-MCP development programmer has the following features: blank check, read, program, verify PICmicro microcontrollers.

## How to install PIC-MCP?

To work with PIC-MCP you have to attach the RS232 cable and to apply power supply.

The RS232 cable should be with 9-pin D type connector. The cable should have all necessary signals as GND, Rx, Tx, CTS, RTS. This cable is NOT a null modem cable.

The power supply adapter should be 18VDC >=100mA on the center positive 2.5 mm terminal. When the power supply is applied the Green LED PWR will switch ON.

**WARNING:** DO NOT connect power with a device in the socket. Damage to the device may result.

## How to use PIC-MCP ICSP programming?

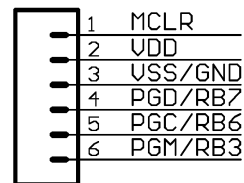
The in-circuit programming connector is very useful when you have to program PICmicro installed on circuit boards or PICmicro in SMD packages, which can't be programmed with ZIF socket.

To enable ICSP programming the JP jumper should be shorted with the cap. Please note that when JP is shorted the PICmicro in ZIF socket is not programmed and only the ICSP connector is enabled!

## ICD/ICSP connector layout:

The ICD/ICSP connector is 6 pin with 0,1" step. The PIN.1 is marked with square pad on bottom and arrow on top. ICSP signals are: 1- MCLR, 2- VDD, 3- VSS/GND, 4- PGD/RB7, 5- PGC/RB6, 6- PGM/RB3.

PIC-ICSP/ICD



## How to use PIC-MCP with MPLAB?

Please read the detailed instructions in MPLAB help file

## What devices PIC-MCP programs?

PIC-MCP programs all PICmicro microcontrollers except PIC17XXX series.

PIC-MCP will program all devices which are supported by the latest release of MPLAB.

Olimex will publish firmware upgrade after each new MPLAB release.

## Ordering codes:

PIC-MCP - assembled and tested