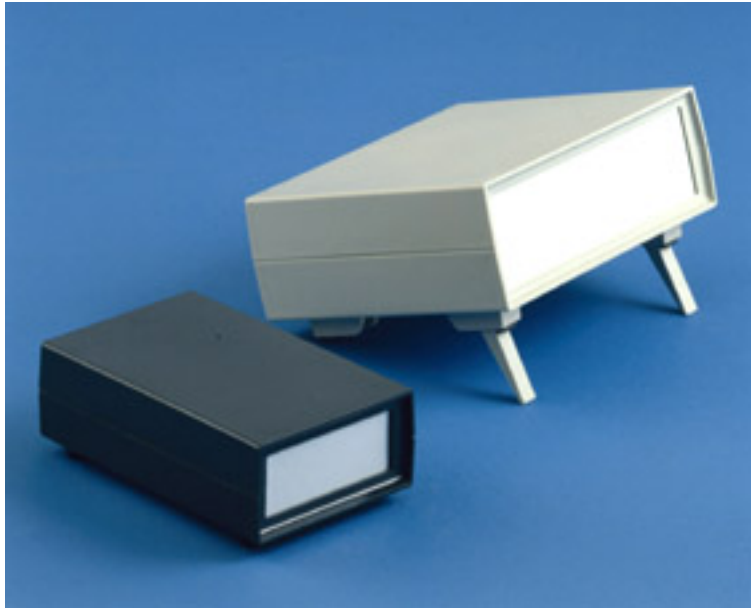


[about us](#)[news](#)[contact](#)[e-mail](#)

ELBOX

These attractive cases are moulded in ABS, with 1.2 mm thick natural coloured anodised aluminium front and rear panels.

The base is equipped with bosses for Eurocards, and two removable side rails are provided for internal sides, where PCB and sub-chassis can be mounted.





Ventilation slots on bottom of case and rear panel.

The smallest size, RE-1, has four non-slip feet. The three larger sizes are supplied with tilt-feet.

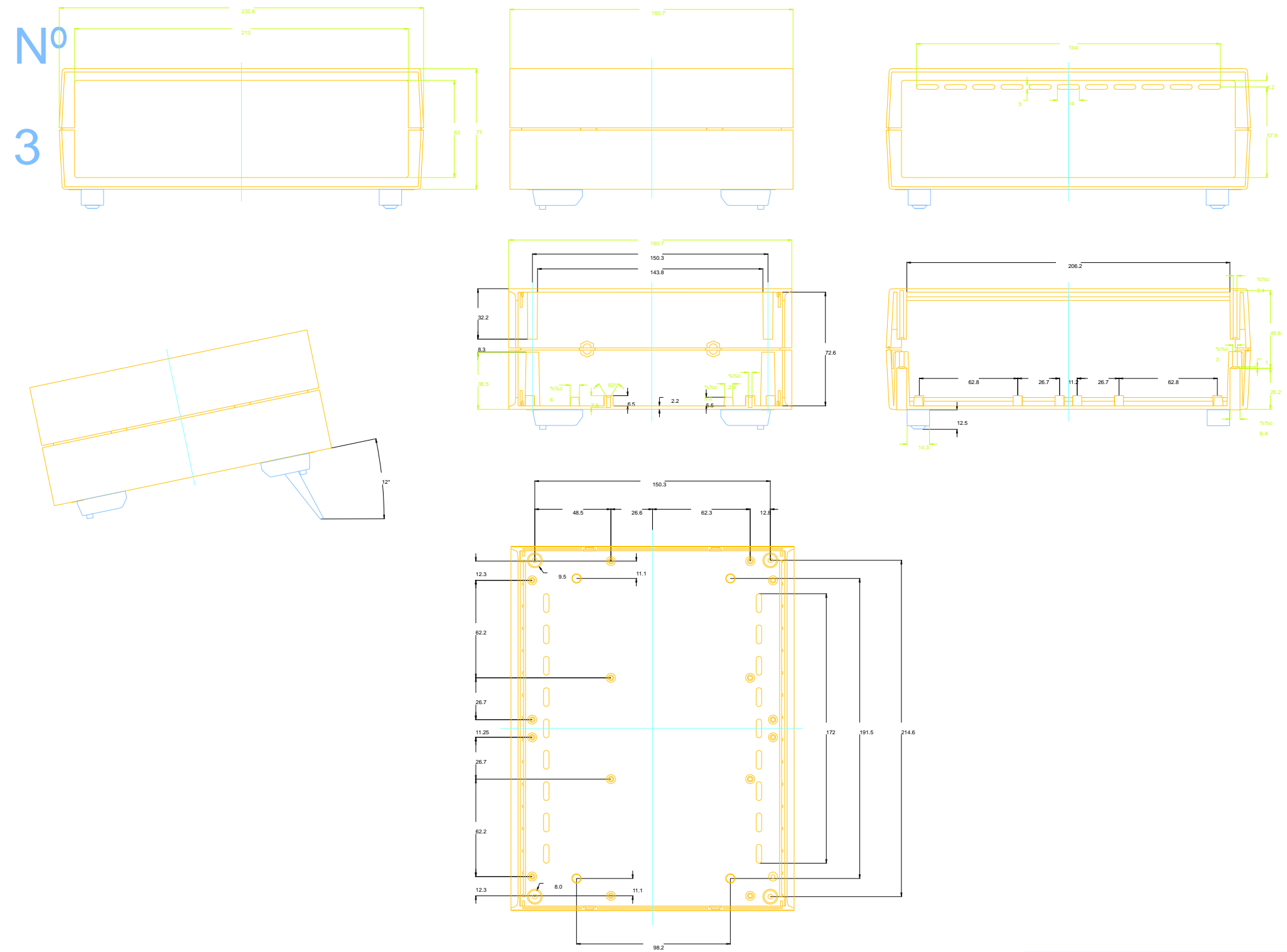
Standard colours: dark grey and light grey.

Optional: box without side rails.

CODE	DESCRIPTION	COLOUR
33030001	ELBOX 90X41X145	LIGHT GREY SIMILAR TO RAL 7032
33030002	ELBOX 171X56X145	
33030003	ELBOX 231X77X181	
33030004	ELBOX 247X102X220	
33030201	ELBOX 90X41X145	DARK GREY SIMILAR TO RAL 7016
33030202	ELBOX 171X56X145	
33030203	ELBOX 231X77X181	
33030204	ELBOX 247X102X220	

	DOWNLOAD DRAWING ELBOX 1 (PDF 49K)	
	DOWNLOAD DRAWING ELBOX 2 (PDF 56K)	
	DOWNLOAD DRAWING ELBOX 3 (PDF 60K)	
	DOWNLOAD DRAWING ELBOX 4 (PDF 58K)	

ELBOX



CAJA ELBOX 3	
33030003	
20-10-2020	

Elaborado por: [Nombre]