

P2

Panel Mounted

Keylock

P2

Panel cut-out (mm) Ø 19.1

- Characteristics
- up to 12 contact pairs
 - 2 security options with key actuation
 - from 2 to 4 switch positions
 - key trapping option
 - solder terminals

Rating 250 VAC, 2 A

Dimensions (mm) Ø 22

Actuator ■ key (common or differs)

Approvals UL (optional)



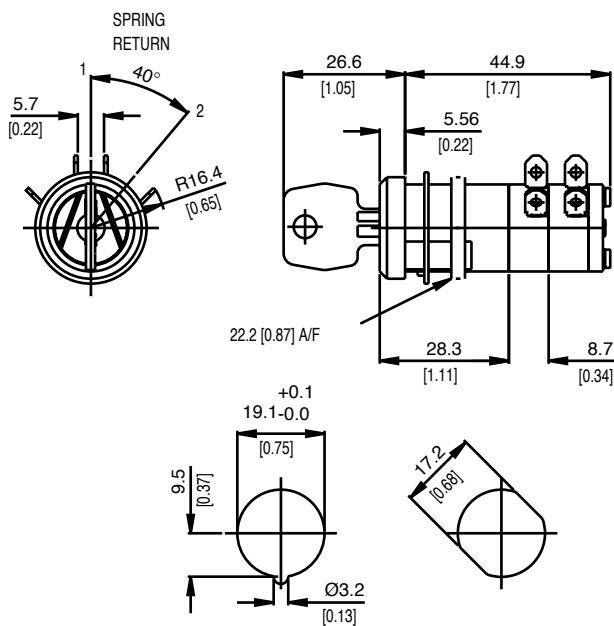
Preferred Range

Ordering Reference	Terminal	Circuit	Actuator	Contacts	Electrical rating
P23FBA206	Screws	2 pole CO	Key	Ag	Up to 250 VAC, 2 A
P23FBA209	Screws	2 pole CO	Key	Ag	Up to 250 VAC, 2 A
P23FBC209	Screws	2 pole CO	Key	Ag	Up to 250 VAC, 2 A
P23FMA209	Screws	2 pole CO	Key	Ag	Up to 250 VAC, 2 A

Specifications

Key	Nickel silver
Body	Glass-fibre reinforced nylon
Springs	Stainless steel
Contacts	Silver
Terminals	4.8 × 0.8 mm (0.19 × 0.032 in) faston (faston) - silver-plated brass
Temperature range °C	-20°C to +85°C
Mechanical life	50,000 operations (minimum)
Mounting	Locknut and washer
Actuators	General duty keylocks
Switching function	Change-over (spring return), change-over (separate circuits)
Key indexing	90°

Dimensions



Recommended maximum electrical ratings

Voltage (max)	Resistive load (A)	Inductive load	Horsepower	Approval
125 VAC	4 (0.75 pf)	-	-	UL 1054/CSA 22.2 No. 55 - 6,000 operations
250 VAC	2 (0.75 pf)	2	-	UL 1054/CSA 22.2 No. 55 - 6,000 operations
12 VDC	10	-	-	UL 1054/CSA 22.2 No. 55 - 6,000 operations

Operating Characteristics

Switching function	Reference	Actuator Type	Code	Key trapping	Diagram
2 pole change-over, spring return	P23FBA206 P23FMA206	Key Key	001 Production run key coding	No No	
2 pole change-over, separate circuits	P23FBA209 P23FMA209	Key Key	001 Production run key coding	No No	
2 pole change-over, separate circuits	P23FBC209 P23DMC209	Key Key - increased security	001 Production run key coding	Yes Yes	

Type coding key for standard products

Basic type	P2	Example: P2	3F	B	A	2	06
Actuators	3F	Key - general duty					
Keycode	B	001 key					
	M	Production run key coding					
Key trapping	A	Key removable in all positions					
	C	Key trapped horizontally, right					
Number of poles	2	2 poles					
Switching function	06	Change-over with spring return					
	09	Change-over with separate circuits					