



- GSM and GPRS
- Voice / Fax / SMS and Data
- Dual Band 900 / 1800MHz GSM Transmission
- Full voice call, SMS support
- Accepts Standard SIM Card
- Data enabled SIM Cards available
- Miniature size 88 x 60 x 26mm
- Can Be Used On Standard GSM Network
- RS232 Interface
- AT command set (GSM 07.05 and 07.07)
- One user programmable input/Output Port
- GPRS Class B Class 10 (36Kb/s download / 24Kb/s upload)
- GSM100T: TCP/IP stack available for data and internet



Data/Fax features:

- Data circuit asynchronous, transparent and non transparent up to 14,400 bits/s
- Automatic fax group 3 (Class 1 and Class 2)
- MNP2, V.42bis

Voice features:

- Telephony
- Emergency calls
- Full Rate, Enhanced and Half Rate
- DTMF Function

Data/Fax features:

- Data circuit asynchronous, transparent and non transparent up to 14,400 bits/s
- Automatic fax group 3 (Class 1 and Class 2)
- MNP2, V.42bis

Short Messages Services features:

- Text and PDU
- Point to point (MT/MO)
- Cell Broadcast

One Programmable I/O Port

- One user programmable input/Output Port
- (3V CMOS logic)

Miniature "Plug And Play" dual band GSM modems can be directly connected to the serial port of a desktop or notebook computer through the RS232 interface. A standard SIM card can be inserted in the integral card-holder within the metal enclosure.

The Modems' metal casing makes it an appropriate solution for tough applications such as Telemetry, Wireless Local Loop (payphones) or as part of a fleet management system. The small size makes it simple to integrate in a space constraint environment. The modem is supplied with power cable, other accessories available are an antenna (with 1m coax cable), RS232 connecting cable with Telephone interface, DIN Rail mounting adaptor, power supply unit and Data enabled SIM card.

About GPRS: GPRS stands for General Packet Radio Services. The user can remain "ON" all the time and the data Communication speed rivals that of a cable modem.

GSM Supplementary Services :

- Call Forwarding -Calling Line Identity
- Call Barring -Advice of Charge
- Multiparty -USSD
- Call Waiting / Hold -Closed User Group
- Explicit Call Transfer
- Cell Broadcast



GSM & GPRS MODEM

GSM100LITE
GSM100T

Technical Specifications

Max Storage Temperature -10°C to +70°C,
Max Operating Temperature -15°C to +50°C

Dimensions 88mm x 60mm x 26mm
Weight 100grams

Electrical Characteristics		Min	Typical	Max	Units
Supply Voltage		5		32	V
Supply Current:	In Communication		450		mA
	Idle mode		25		mA
	Idle mode with RS232 power saving		13		mA

Interfaces:

SIM holder (integrated Drawer, accepts standard SIM card)
15 pin Sub-D type connector (for serial and audio connection)
4-pin power supply connector (micro-FIT™)
SMA antenna connector (50 ohm)

Power Supply Unit:

Input: 110-240Vac, 2 pin IEC connector
Output: 12Vdc +/-5%, 1A, 4 Pin micro-FIT™ connector

Ordering Information

Part No	Description
GSM100L	GSM GPRS Class 10 Modem, dual Band
GSM100T	As GSM100L with Additional TCP/IP Stack
GSM20-Ant	Antenna with flying lead and connector
GSM20-CAB232	RS232 Cable Interface to PC
GSM20-DINRL	DIN Rail Mount Bracket
GSM20-PSU	Power Supply (110-230Vac)

For more information or general enquiries:

R F Solutions Ltd.,

Unit 21, Cliffe Industrial Estate,

Lewes, E. Sussex. BN8 6JL. England.

Email : sales@rfsolutions.co.uk <http://www.rfsolutions.co.uk>

Tel: +44 (0)1273 898 000 Fax: +44 (0)1273 480 661

Information contained in this document is believed to be accurate, however no representation or warranty is given and no liability is assumed by R.F. Solutions Ltd. with respect to the accuracy of such information. Use of R.F.Solutions as critical components in life support systems is not authorised except with express written approval from RFSolutions Ltd.





GSM100 USERS MANUAL

USER MANUAL

Rev. 04, Nov 2003

CONTENTS

SAFETY PRECUTIONS	2
CHAPTER 1 INTRODUCTION	3
CHAPTER 2 INSTALLATION	7
CHAPTER 3 WORKING WITH FARGO MAESTRO	9
CHAPTER 4 SPECIFICATION	12
CHAPTER 5 APPENDIX	13
CHAPTER 6 TROUBLESHOOTING	14





GSM100 USERS MANUAL

SAFETY PRECUTIONS

- The modem generates radio frequency (RF) power. When using the modem care must be taken on safety issues related to RF interference as well as regulations of RF equipment.
- Do not use your phone in aircraft, hospitals, petrol stations or in places where using GSM products is prohibited.
- Be sure that the modem will not be interfering with nearby equipment. For example: pacemakers or medical equipment. The antenna of the modem should be away from computers, office equipment, home appliance, etc.
- An external antenna must be connected to the modem for proper operation. Only uses approved antenna with the modem. Please contact authorized dealer on finding an approved antenna.
- Always keep the antenna with minimum safety distance of 26.6 cm or more from human body. Do not put the antenna inside metallic box, containers, etc.

Using the modem in vehicle

- Check for any regulation or law authorizing the use of GSM in vehicle in your country before installing the modem
- Install the modem by qualified personnel. Consult your vehicle dealer for any possible interference of electronic parts by the modem.
- The modem should be connected to the vehicle's supply system by using a fuse-protected terminal in the vehicle's fuse box
- Be careful when the modem is powered by the vehicle's main battery. The battery may be drained after extended period.

Protecting your modem

- To ensure error-free usage, please install and operate your modem with care. Do remember the following:
- Do not expose the modem to extreme conditions such as high humidity/rain, high temperatures, direct sunlight, caustic/harsh chemicals, dust, or water.
- Do not try to disassemble or modify the modem. There is no user serviceable part inside and the warranty would be void.
- Do not drop, hit or shake the modem. Do not use the modem under extreme vibrating condition.
- Do not pull the antenna or power supply cable. Attach/ detach by holding the connector.
- Connect the modem only according to the instruction manual. Failure to do it will void the warranty.
- In case of problem, please contact authorized dealer.





GSM100 USERS MANUAL

CHAPTER 1

INTRODUCTION

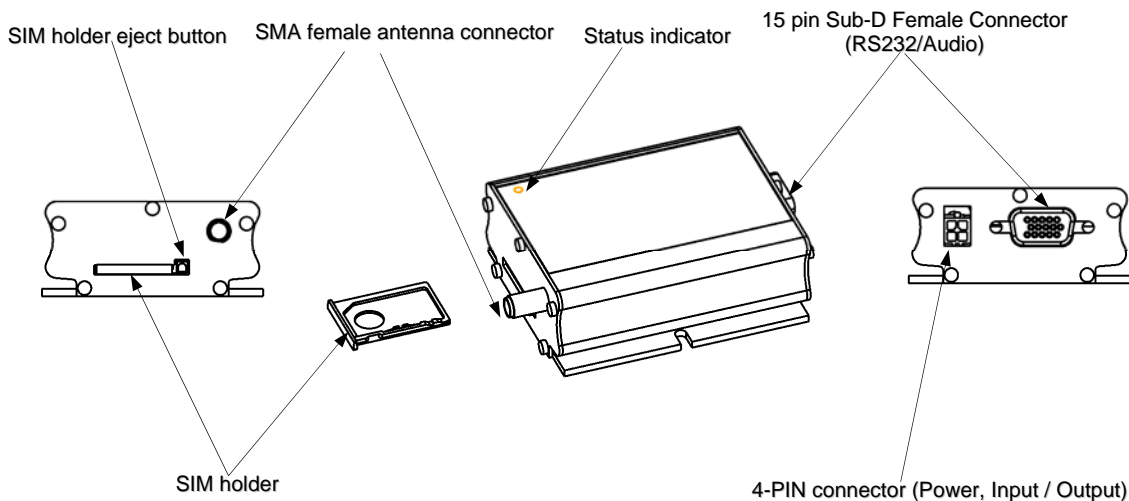
Fargo Maestro is a ready-to-use GSM modem for voice, data, fax and SMS services. It also supports GPRS Class 10(Fargo Maestro 100) for hi-speed data transfer. The modems can be easily controlled by using AT command for all kinds of operations. With standard 9-pin RS232 port and telephone-like audio plug (via optional cable).

1.1. Package

The Fargo Maestro package should include the following:

- 1.Fargo Maestro x 1
2. Power cord with fuse x 1
3. Safety note x 1

1.2. Interfaces



1.2.1. Status indicator

The LED will indicate different status of the modem:

- off Modem switched off
- on Modem is connecting to the network
- flashing slowly Modem is in idle mode
- flashing rapidly Modem is in transmission/communication (GSM only)

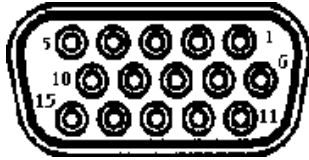
1.2.2. SMA female antenna connector

- Connect this to an external antenna with SMA male connector. Make sure the antenna is for the GSM900/1800 frequency with impedance of 50ohm, and also connector is secured tightly.



1.2.3. 15-PIN D-SUB Female connector (RS232 / Audio)

- The connector provides serial link and audio link to the modem.



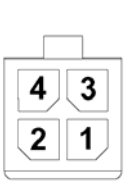
Pin number	Name	EIA designation	Type	Note
1	DCD	Data Carrier Detect	Output	
2	TX	Transmit Data	Input	
3	BOOT		Input	Not used
4	MICROPHONE (+)		Input	
5	MICROPHONE (-)		Input	
6	RX	Receive Data	Output	
7	DSR	Data Set Ready	Output	
8	DTR	Data Terminal Ready	Input	
9	GND	Ground	Ground	
10	SPEAKER(+)		Output	
11	CTS	Clear to Send	Output	
12	RTS	Request to Send	Input	
13	RI	Ring Indicator	Output	
14	RESET		Input	Pull low to reset
15	SPEAKER(-)		Output	

Specification of microphone and speaker to be connected :

Parameters	Min	Typical	Max	Remark
Microphone current @2V / 2K Ohm		0.5 mA		
Microphone input level			100 mVpp	
Speaker output current 150 Ohm/ 1nF		16mA		
Speaker impedance			32ohm	

Please refer to the document "Application notes - Power supply & Audio" for more information of audio connection.

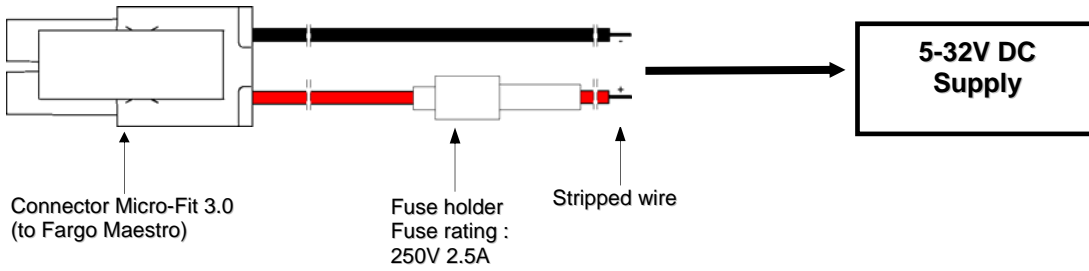
1.2.4. 4-PIN modem socket (Power, Input / Output)



Pin assignment of 4-pin connector

Pin number	Name	Functions
1	I/O	Input / Output port
2	~INTR	Interrupt function triggered by pulling this pin to ground or LOW level; reserved for additional functions with new firmware
3	POWER -	DC power negative input
4	POWER +	DC power positive input

A cable, included in the package shall be used for power supply connection:



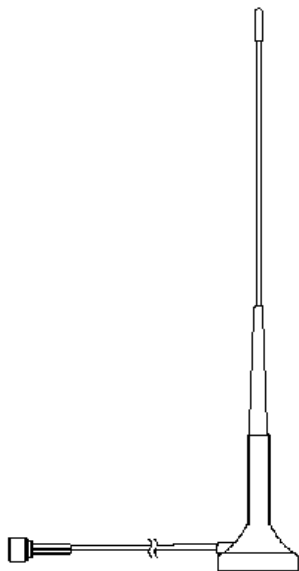
I/O

Parameters	Min	Typical	Max	Remark
LOW voltage			0.5V	
HIGH voltage	3V		5V	
I/O out max. sink current			10mA	

INTR

Parameters	Min	Typical	Max	Remark
LOW voltage	0		0.5V	Triggered by pulling this pin to LOW level; otherwise leave it open

- Please refer to Chapter 6 Appendix for using I/O and INTR signals. Contact your dealer if you need wire for the I/O and INTR connection



External antenna

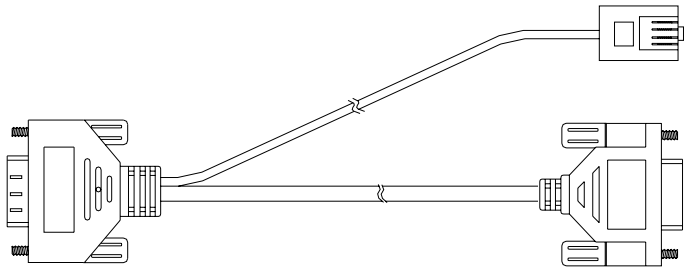
- Magnetic mount type
- Frequency GSM 900/1800 band
- Gain 3db
- VSWR < 1.5:1
- Height ~ 236 mm (including magnetic base)
- Cable : Type RG-174U length 2.5m
- SMA male connector on cable end
- color : black (SMA connector silver)

1.2.5 Optional accessories

You may contact your sales agent for the following optional accessories:



GSM100 USERS MANUAL

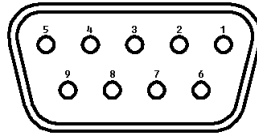


Pin Assignment

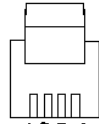
'Y' cable

- Direct connection with standard 9-pin RS-232 port (DTE)
- Direct connection with common handset of telephone for voice call
- Shielded cable
- Cable length 1.1m (w/ connector)

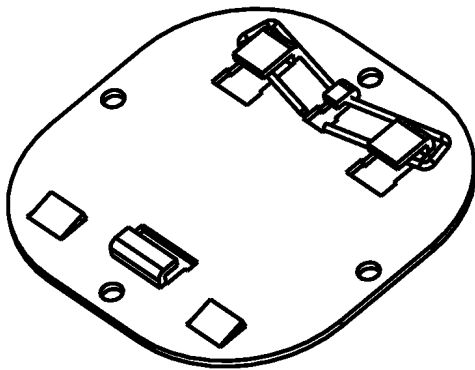
Sub-D 15 (male)	Sub-D 9 (female)	Plug 4P4C
1	1	
2	3	
3		
4		1
5		4
6	2	
7	6	
8	4	
9	5	
10		2
11	8	
12	7	
13	9	
14		
15		3



Sub-D 9 pin



4p4c plug



DIN rail mount

- Quick attachment / detachment to standard DIN rail
- Tin plated Steel



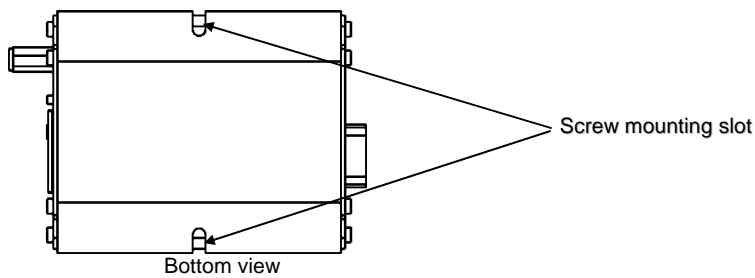
CHAPTER 2

INSTALLATION

2.1 Mounting the modem

Use 2 pcs of M3 screw to mount the modem

When using optional DIN rail mount please refer to document "Installation of DIN rail mount"



2.2 Installing the SIM card

Use a ball pen or paper clip to press the SIM holder eject button. The SIM holder will come out a little. Then take out the SIM holder.

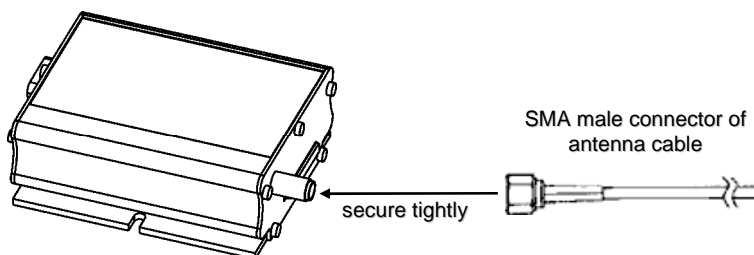
Note : DO NOT pull out the SIM holder without pushing the eject button.

Put the SIM card to the tray, make sure it has completely sit on the tray. Put the tray back into the slot.

2.3 Connecting the external antenna (SMA type)

Connect this to an external antenna with SMA male connector. Make sure the antenna is for the GSM900/1800 frequency with impedance of 50ohm, and also connector is secured tightly.

Note : Please use antenna designed for GSM 900/1800 Mhz operation. Incorrect antenna will affect communication and even damage the modem.



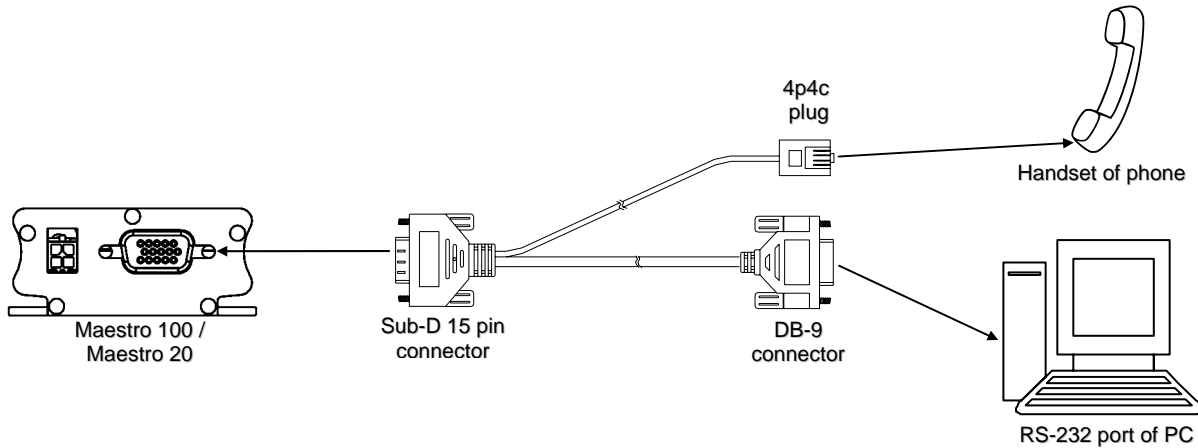


GSM100 USERS MANUAL

2.4 Connect the modem to external device

You can use the optional 'Y' cable to connect the modem's Sub-D connector to external controller/computer. Note : The modem CANNOT be connected to the 'Line' jack of a landline telephone directly.

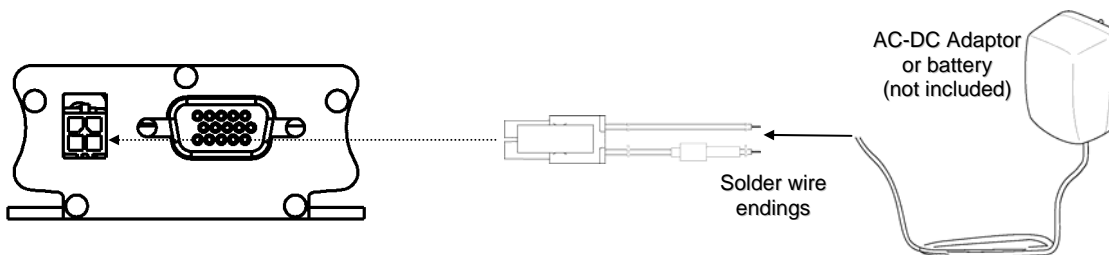
Connection example using optional 'Y' cable:



2.5 Connecting the DC power supply

Connect the open ending of the included power cord to a DC supply. Refer to the following for power supply requirement.

Input voltage range	5V – 32V
Rated current	650mA



Connect the connector to the modem. The modem will turn on automatically.

The status indicator on the modem will be lit when power on. After a few seconds it will go flashing slowly (registered to the network successfully, refer section 1.2.1).

Chapter 3 describes how to communicate with the modem in Microsoft Windows™ environment.

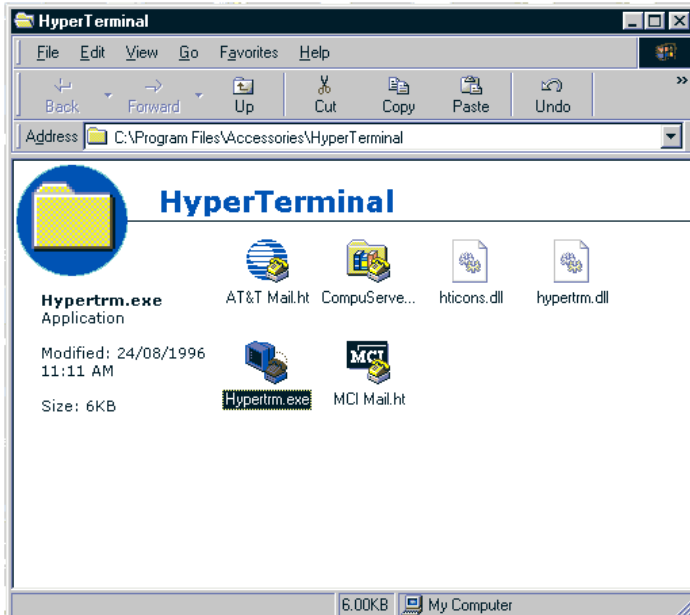


CHAPTER 3

WORKING WITH FARGO MAESTRO

3.1. Checking the modem (using Microsoft Windows™ 98 HyperTerminal as example)

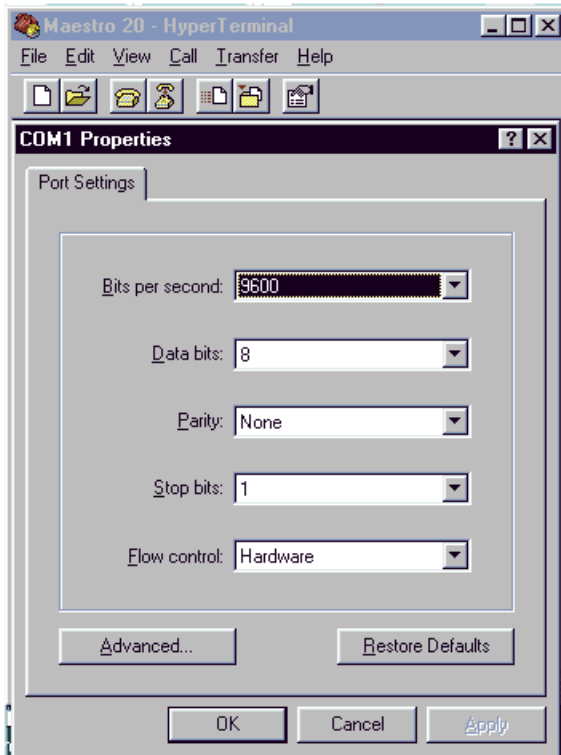
3.1.1. On the first time power-up you can use a terminal software to communicate with the modem through an RS-232 serial port. Following example is using the HyperTerminal in Windows 98.



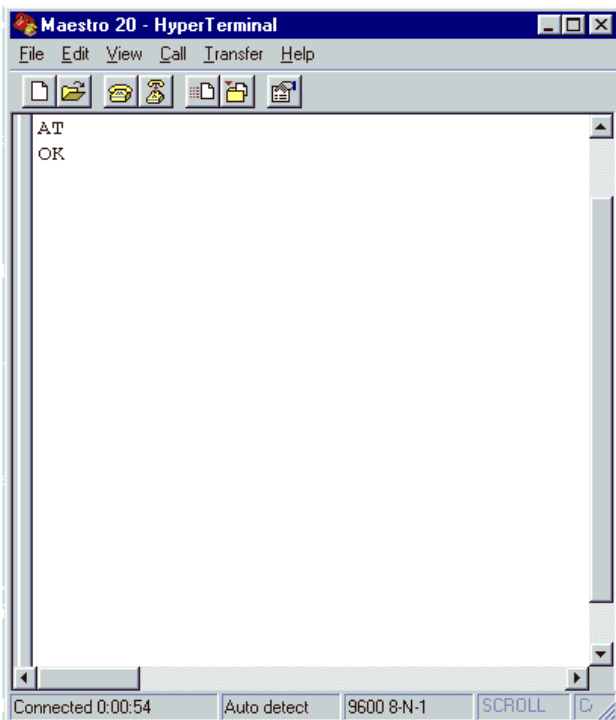
3.1.2. On Windows 98, start the HyperTerminal program. Assign a name for a new session.



3.1.3. Choose the correct Com port and baud rate settings; Fargo Maestro 100 : 115200bps, 8bits, no parity bit, 1 stop bit)



3.1.4. On the terminal screen, type "AT" to check the "OK" response from the modem





GSM100 USERS MANUAL

3.2. Basic Operation :

Followings are examples of some AT commands. Please refer to the AT Command guide for a full description.

Note : Issue AT+CMEE=1 to have extended error code (+CME ERROR)

Description	AT commands	Modem response	Comments
Network Registration Checking	AT+CREG?	CREG=<mode>,1	Modem registered to the network
		CREG=<mode>,2	Registration lost, re-registration attempt
		CREG=<mode>,0	Modem not registration on the network, no registration attempt
Receiving signal strength	AT+CSQ	+CSQ: 20,0	The first parameter has to be at least 15 for normal communication
Receiving an incoming call		RING	An incoming call is waiting
	ATA		Answer the call
		OK	
Make a call	ATD1234567;		Don't forget the « ; » at the end for « voice » call
		OK	Communication established
		CME ERROR : 11	PIN code not entered (with + CMEE = 1 mode)
		CME ERROR : 3	AOC credit exceeded or a communication is already established
		CME ERROR : 10	Cannot read the SIM card
Make an emergency call	ATD 112;		Don't forget the « ; » at the end for « voice » call
		OK	
Communication loss		NO CARRIER	
Hang up	ATH		
		OK	
Enter PIN code	AT+CPIN=1234		
		OK	PIN Code accepted
		+CME ERROR : 16	Incorrect PIN Code (with +CMEE = 1 mode)
		+CME ERROR : 3	PIN already entered (with +CMEE = 1 mode)
Saves parameters in non-volatile memory	AT&W		
		OK	The configuration settings are stored





GSM100 USERS MANUAL

CHAPTER 4

SPECIFICATION

- Dualband GSM 900 / 1800 Mhz
- Support Data, SMS, Voice and Fax
- Max Power Output: 2W(900Mhz), 1W(1800Mhz)
- Group 3 FAX support (Class 1 and 2)
- Fargo Maestro 100 : GPRS Class B Class 10 (4Rx+1Tx or 3Rx+2Tx) at maximum speed.*
- SimToolKit Class 2
- AT command set (GSM 07.05, GSM 07.07 and WAVECOM proprietary)

* Note : Available slot for GPRS connection is network dependent.

Power requirement :

Input voltage range	5V – 32V
Rated current	650 mA (Fargo Maestro 100)

Typical current consumption

	@5V	@12V	@32V
GSM900 communication mode PCL=5	310mA	130mA	50mA
DCS1800 communication mode PCL=5	240mA	100mA	40mA
GPRS900 Class 10 PCL=5	520mA	220mA	80mA
GPRS1800 Class 10 PCL=0	390mA	160mA	70mA
Idle mode	35mA	16mA	8mA
Idle mode with power saving on RS232	12mA	11mA	5mA

Interfaces :

- SIM holder
- 15 pin Sub-D connector (serial and audio connection)
- 4-pin power supply connector
- SMA antenna connector (50 ohm)

Dimensions:

- Overall size: 88mm x 60mm x 26mm
- Weight: 100g
- Temperature range: -15°C to +50°C operating
-20°C to +65°C storage





GSM100 USERS MANUAL

CHAPTER 5

APPENDIX

5.1 Factory settings

The modem has the following factory settings. Please refer to the AT command document for the meaning of each setting.

Related AT commands	Factory Settings	Description
AT+IPR	9600	DTE-DCE data rate
AT+IFC	2,2	DTE-DCE flow control
AT+ICF	3,4	DTE-DCE character framing
ATE	1	ECHO
AT&C	1	DCD signal
AT&D	1	DTR signal
ATQ	0	Result code suppression
ATV	1	Response format
AT&S	1	DSR signal
ATS0	0	Auto answer
AT+CLIP	0	Calling line ID presentation
AT+CRLP		Calling line ID restriction
AT+CSCS	"PCCP437"	
AT+CMGF	1	Message format
AT+CSMP	1,67,0,0	Text mode parameters
AT+CNMI	0,0,0,0	New message indication

5.2 Input / Output port

This port can be configured as either an input one or an output one.

To configure it as an input port, first issue AT+WIOW=2, 0 to disable the output port. Use AT+WIOR=3(Fargo Maestro 100) or AT+WIOR=1(Fargo Maestro 20) to read the status of this input port. Response +WIOR: 0 represent Logic HIGH (>3V); Response +WIOR: 1 represent Logic LOW (<0.5V) To use it as an output port, issue AT+WIOW=2,1 will turn it on and it will drain current to ground. The current is recommended not to exceed 10 mA. Issue AT+WIOW=2,0 will turn it off.

5.3 RS232 AUTO-ONLINE mode (power saving)

When being in the AUTO-ONLINE, the RS232 transceiver will shutdown most of its hardware to save power if it does not detect a valid input for more than 100uS. The RS232 transceiver will wake up when valid input is detected again.

By default, the RS232 transceiver is put in AUTO-ONLINE. This mode can be turned off by issuing AT+WIOW=4,1.





GSM100 USERS MANUAL

CHAPTER 6

TROUBLESHOOTING

6.1 The modem's LED does not light :

Check if the modem has connected to a 5-32V power supply properly

Check if the power connector is properly inserted

Check the fuse on the power cord

6.2 The modem's LED lights but does not blink long time after power up

Check if a valid SIM card has been inserted properly

Check if the SIM card has been locked (refer to AT+CPIN command in AT command guide)

Check if the external has been connected properly to the modem

Check if the network coverage is available.

6.3 The modem does not response to the terminal program

Check if the RS-232 cable has been connected properly

Check if your program has proper setting. Factory setting of the modem is:

9600bps

8 data bits

no parity bit

1 stop bit

6.4 No voice could be heard for the modem's speaker output when a call is answered

Make sure a voice call has been made (refer to AT command guide)

Enter the AT+SPEAKER=1 command





GSM20 WIN98 GPRS SET-UP GUIDE

Windows 98 GPRS Connection Set-up Guide

Rev. 0, 20 Nov 2002

CONTENTS

1. INTRODUCTION	2
2. CONFIGURATING MAESTRO 20	2
3. ADDING A MODEM TO WINDOWS 98	2
4. MAKING A DIAL-UP NETOWRKing	4
5. TROUBLE SHOOTING	9





GSM20 WIN98 GPRS SET-UP GUIDE

1. INTRODUCTION

This document describes how to use Maestro 20 and a PC with Windows 98 to make a GPRS Internet Dial-up.

1.1 Set-up requirement

The following items are necessary for the set-up:

- **MAESTRO-20 with PC cable and power supply**
- PC with Windows 98 installed, and a free RS-232 port
- A SIM card with GPRS service subscribed

2. CONFIGURATING MAESTRO 20

2.1 Setting up HyperTerminal

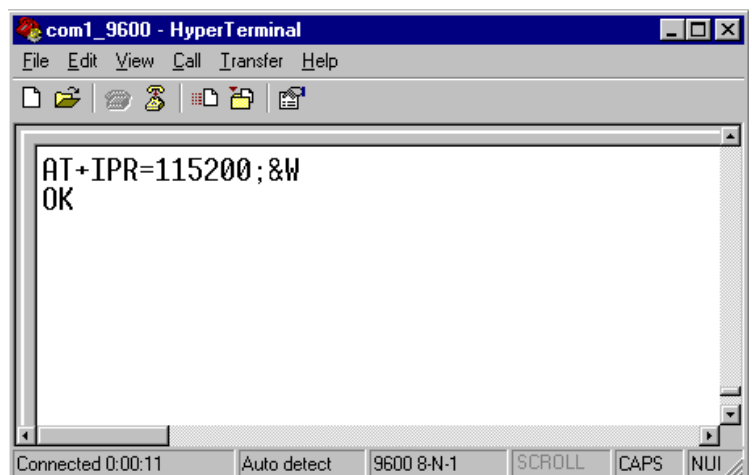
Refer to Chapter 2 and 3 of MAESTRO 20 USER GUIDE, set up MAESTRO 20 and Windows98 HyperTerminal. Make sure the modem is ready to receive commands.

2.2 Setting serial port speed

On the HyperTerminal, enter command:
AT+IPR=115200; &W<ENTER>

Note: after entering this command the modem serial port speed will be permanently set at 115200bps.

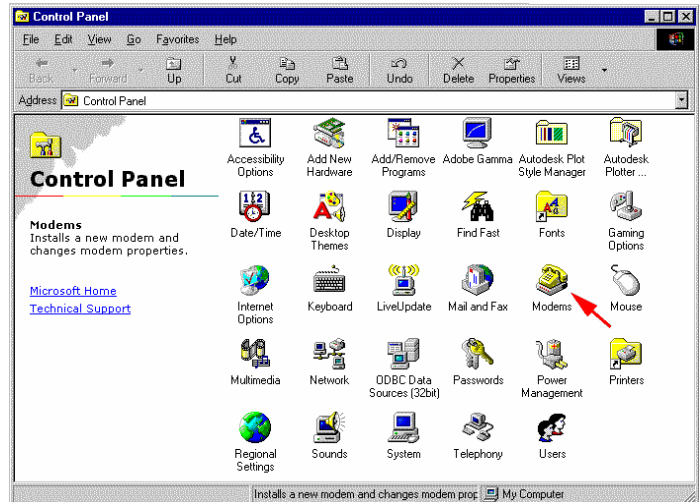
Now you can close the HyperTerminal



3. ADDING A MODEM TO WINDOWS 98

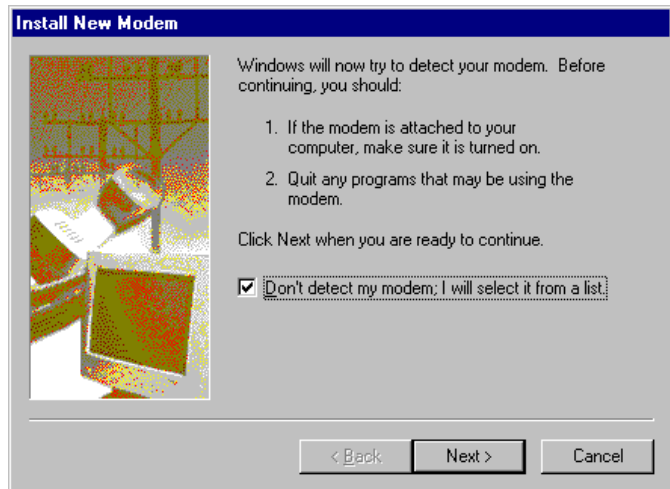
3.1 On Windows 98, Choose “**Start**”, then choose “Control Panel folder

3.2 Double click the ‘**Modem**’ icon

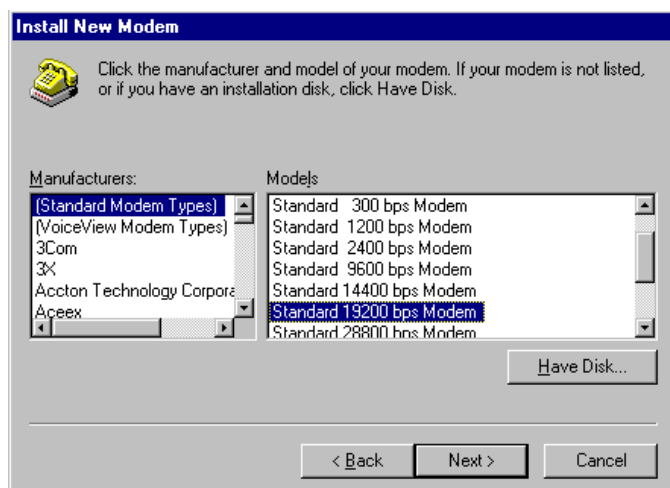


3.3 If your system have no modem installed it will show the ‘**Install New Modem**’ dialogue box, otherwise it will show ‘**Modem Properties**’ (see) You can then press ‘Add’ button

3.4 On ‘**Install New Modem**’ dialogue box, click ‘**Don’t detect my modem**’. Then press ‘**Next**’



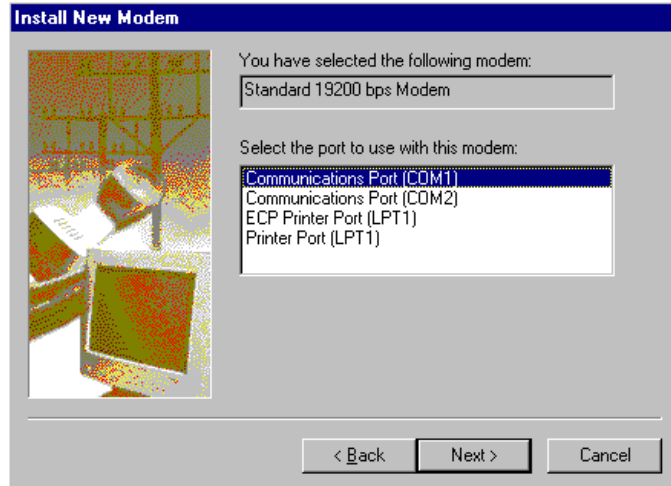
3.5 Choose ‘**Standard 19200bps Modem**’, then press ‘**Next**’



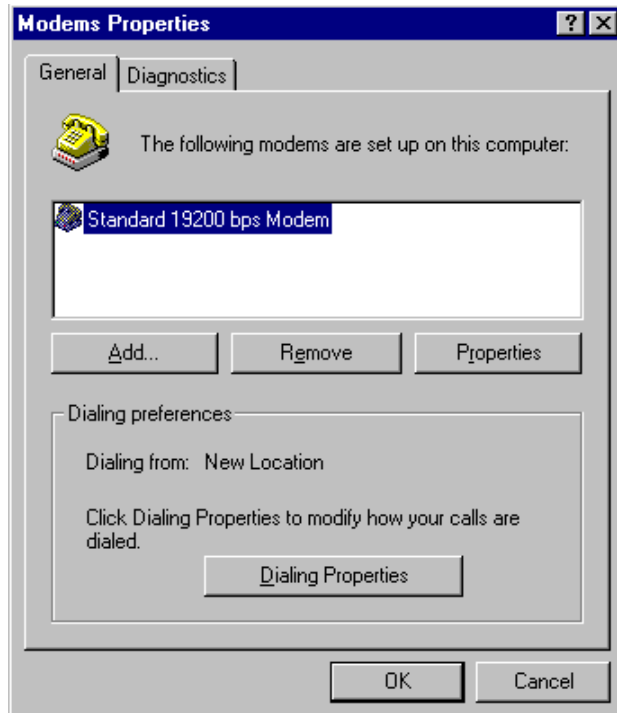


GSM20 WIN98 GPRS SET-UP GUIDE

3.6 Choose the COM port where the MAESTRO 20 connected, then press **'Next'**



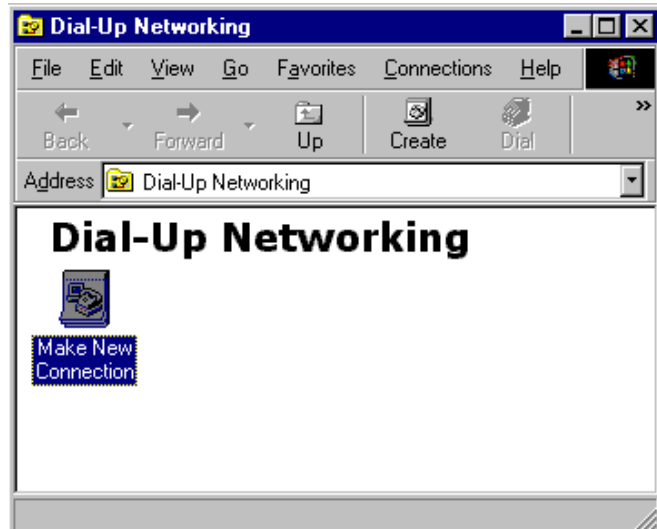
3.5 Now the modem has been installed. You can press **'OK'**



4. MAKING A DIAL-UP NETWORKING

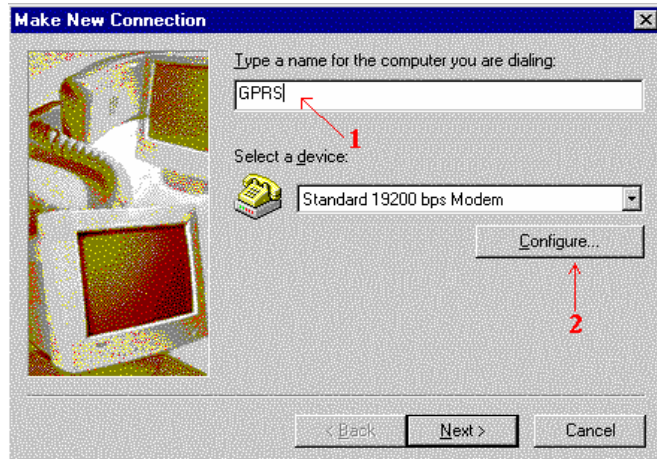
4.1 On Windows 98, go to 'Accessories' → 'Communication' → 'Dial-up Networking'

4.2 Double click 'Make a New Connection'



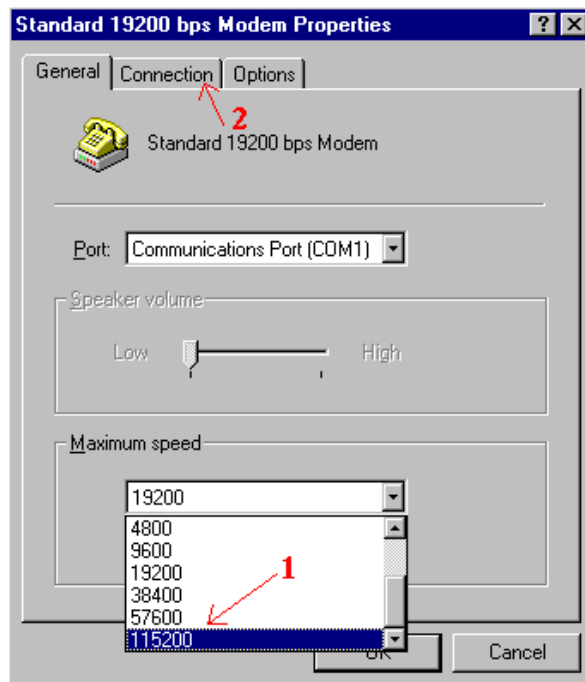
4.3 Type the name of the dial-up profile as you want

4.4 Choose the '19200 bps modem' and press 'Configure'



4.5 Choose the 'Maximum speed' to '115200'

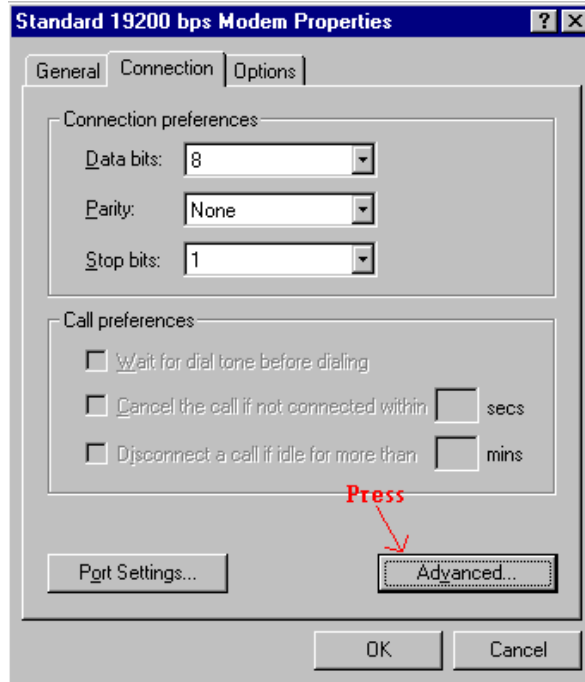
4.6 Click 'Connection' tab





GSM20 WIN98 GPRS SET-UP GUIDE

4.7 Press 'Advanced' button



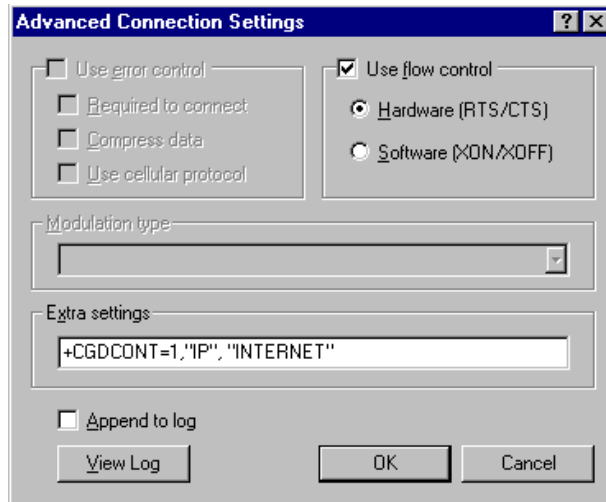
4.8 On 'Extra settings', type the APN information here. (Consult your Network Operator for the correct APN settings)

Common setting is :

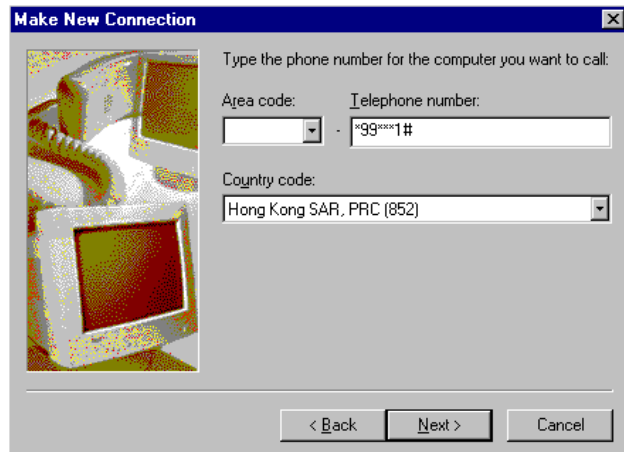
+CGDCONT=1,"IP","INTERNET"

4.9 Use Hardware flow control, then press 'OK'

4.10 Close all modem properties dialog box by pressing 'OK's and go back to the 'Make new connection' (sec. 4.3). Then press 'Next'



4.10 On the 'Telephone number' type '*99**1#'. Then press 'Next'

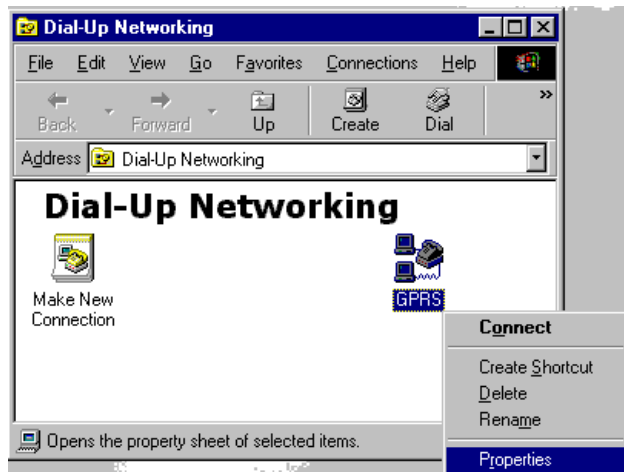


4.11 Press 'Finish' and you have made a GPRS dial-up profile.

However you need to edit some more settings.



4.12 Right-click the just-made GPRS dial-up icon. Then choose 'Properties'

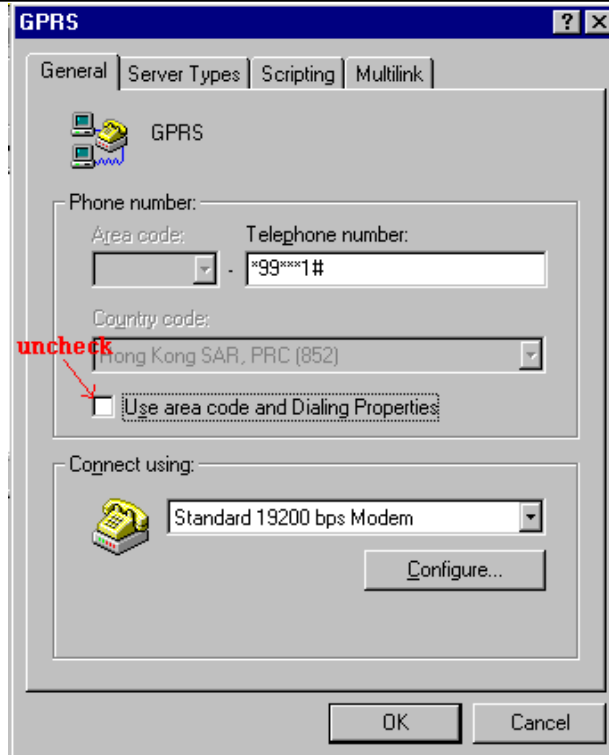




GSM20 WIN98 GPRS SET-UP GUIDE

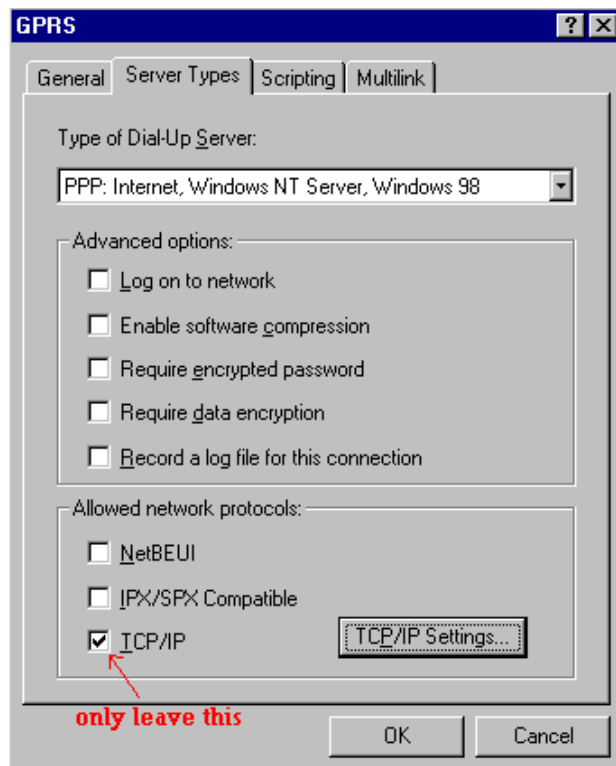
4.13 Uncheck the 'Use area code' option

4.14 Press 'Server Types' tab



4.15 Uncheck ALL options EXCEPT 'TCP/IP' option

4.16 Press the 'TCP/IP Settings' button



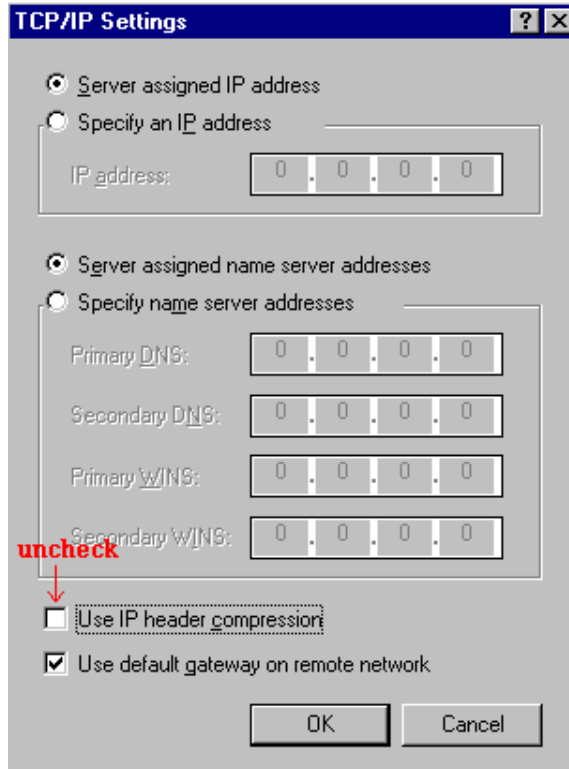


GSM20 WIN98 GPRS SET-UP GUIDE

4.17 Uncheck the 'Use IP header compression' option

4.18 Then close all dialog boxes by pressing 'OK's.

Now you have finished the set-up of GPRS DUN.



4.19 Now you can make a GPRS dial-up by double-click the GPRS icon.

Remember to leave User name and password blank on connection (or refer to your network operator's instruction)





GSM20 WIN98 GPRS SET-UP GUIDE

5. Trouble shooting

Problem	Action
Dial-up Networking reports modem is not responding	Check if the modem is ready, LED is flashing slowly Check the serial port setting of Maestro and Windows modem device Check connection cable Check if the modem is used by another program
Dial-up not successful	Check if GPRS service ready from the network Try entering command: AT+CGQREQ=1,0,0,3,0,0 by using HyperTerminal
Dial-up successful, but disconnect immediately	Check APN setting, consult your network operator
Dial-up successful, but cannot access the Internet	Check your Windows' Internet settings Check signal strength Note: Dial-up Networking will NOT drop even signal is lost; it will try to recover soon

