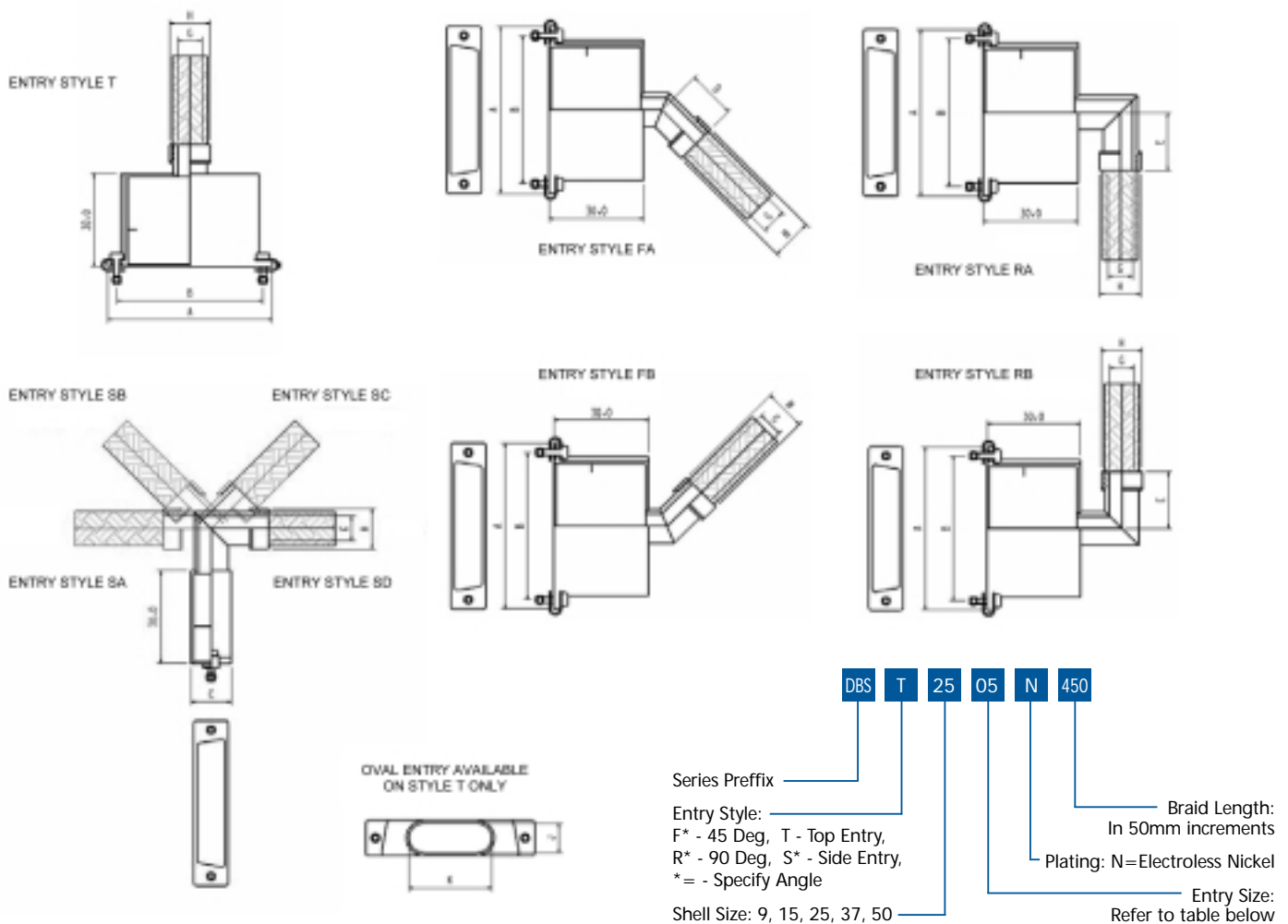


Features

- Complete range of EMC protected back shells, delivered with their braid at specified lengths available in all shells sizes and a variety of cable entry styles
- Aluminium Alloy, Zinc, Yellow Chromate or Electroless Nickel
- Standard Braid Lengths of 450mm and 900mm. For non-standard options consult sales office



Dimensions



Oval Entry Sizes

Shell Size	J	Entry Size K			
		09	10	11	12
09	8.75	12.75	-	-	-
15	8.75	12.75	16.50	-	-
25	8.75	12.75	16.50	22.75	-
37	8.75	12.75	16.50	22.75	37.00
50	11.00	16.50	23.00	37.00	-

Back Shell Dimensions

Shell Size	A	B	C	Max Entry
09	31.0	24.99	12.93	05
15	39.2	33.32	12.93	05
25	53.0	47.04	12.93	05
37	69.5	63.50	12.93	05
50	66.9	61.11	15.75	08

Entry Size	D	E	G	H Max
01	15.4	17.0	3.18	13.1
02	15.7	17.8	4.75	13.1
03	16.1	18.9	6.86	13.1
04	16.2	19.1	7.37	13.1
05	16.4	19.4	7.92	13.1
06	16.8	20.4	10.03	17.9
07	16.9	20.7	10.67	17.9
08	17.3	21.8	12.70	17.9