

Flare-B-DD lens for Sharp GM2BB... (Double Dome) series of LEDs



Flare-B-DD

SHARP.



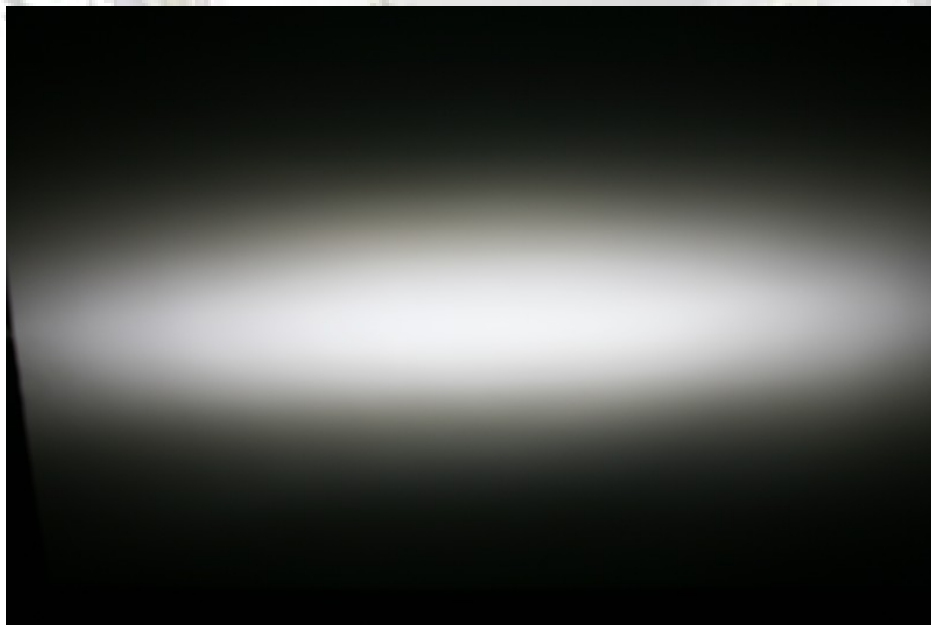
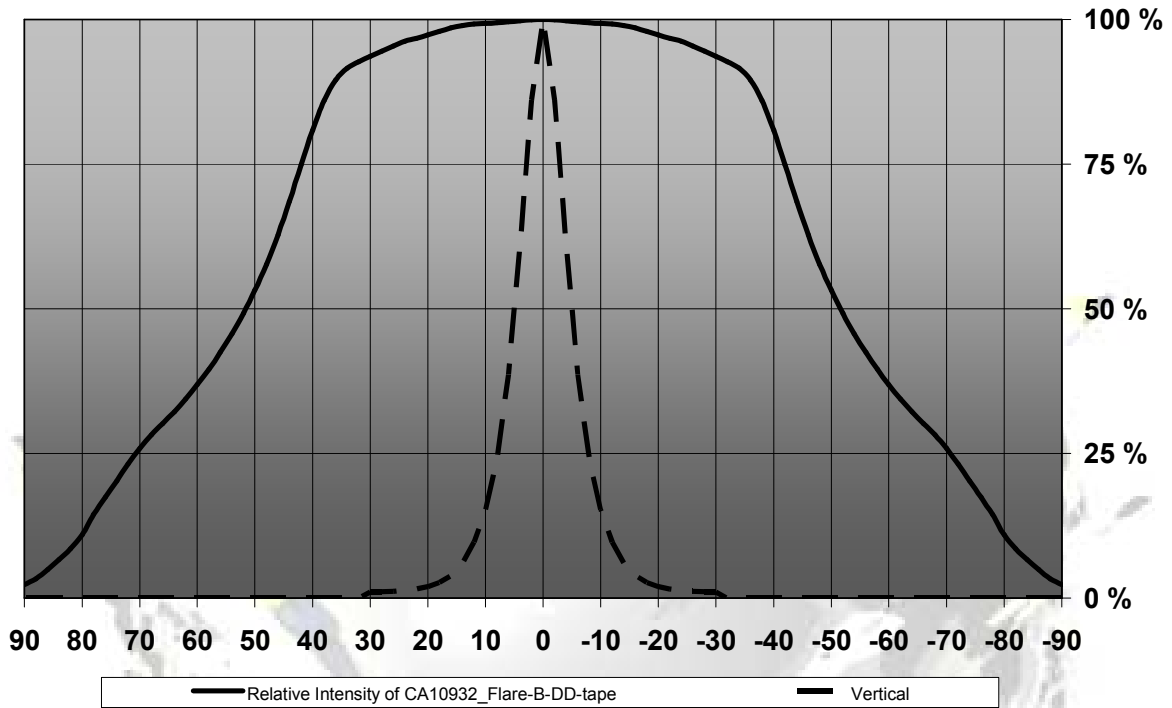
- Lens designed for Sharp GM2BB... (Double Dome) series of LEDs
- Lens material optical grade PMMA with high UV and temperature resistance (105°C/220°F). Allows use of high current and temperature conditions
- Best available optical efficiency
- Fastening to PCB & heat sink with 2 screws (C10946_Flare-B-DD) or very easy assembly with TAPE
- LED can be assembled parallel or perpendicular to the x,y axis (to turn the light distribution by 90°)
- Compact dimensions 23 x 25 mm. Square form enables easy build of a line without any gaps between lenses.
- **Especially suitable for Beacon and other 360° solutions and in linear solutions with high evenness requirements**

NAME	ORDERING CODE	FWHM Angle
Flare-B-DD LENS	C10946_Flare-B-DD	±52° x ±5°
Flare-B-DD LENS+ TAPE	CA10932_Flare-B-DD-tape	±52° x ±5°

© Ledil Oy - Subject to change without prior notice

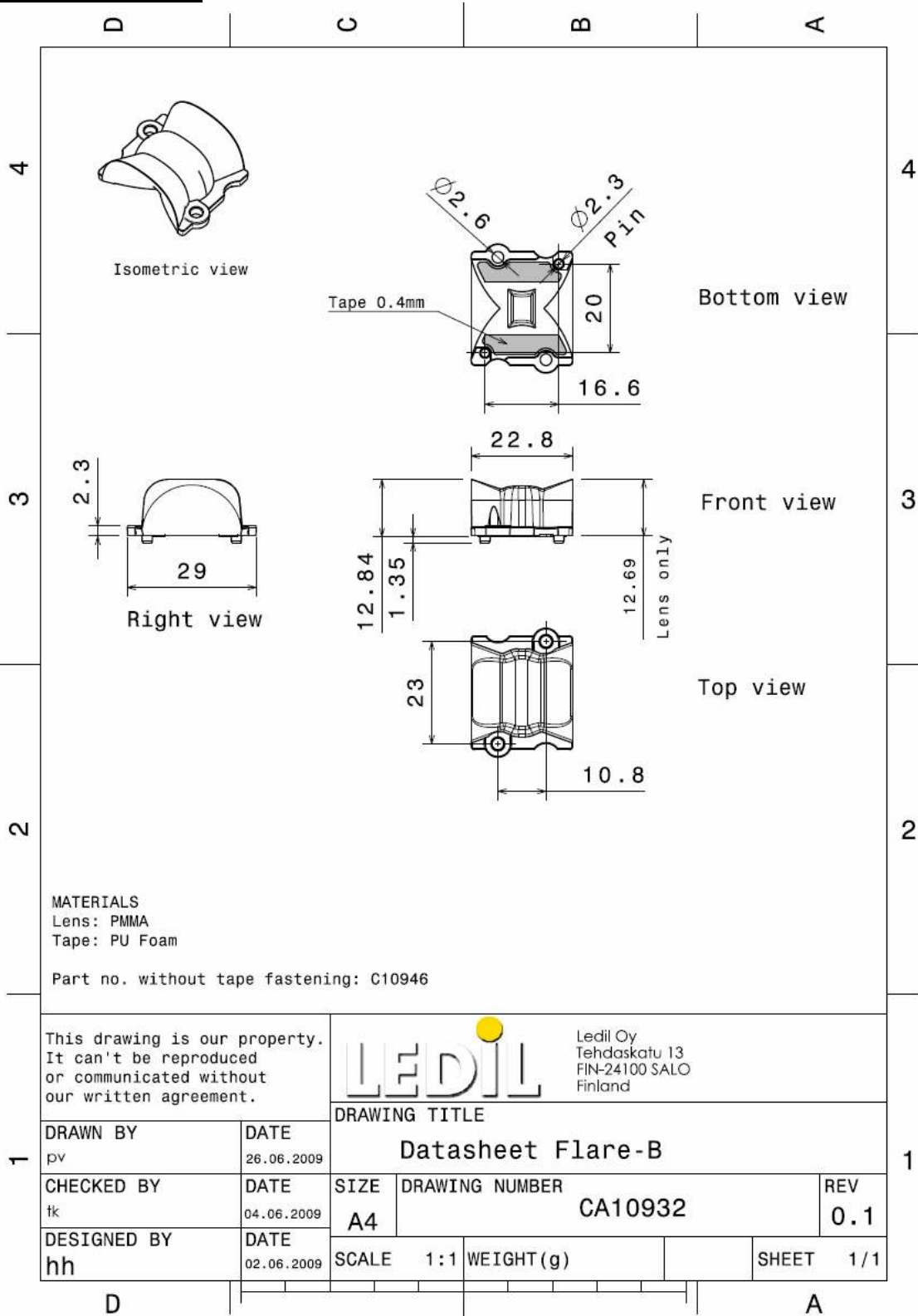
MEASUREMENTS

Relative Intensity of CA10932_Flare-B-DD-tape



© Ledil Oy - Subject to change without prior notice

DRAWINGS



© Ledil Oy - Subject to change without prior notice