

# The ratchet with hammer function

Everyone knows that ratchets are sometimes used as hammers, because lets face it, time is short. You're not *meant* to do it, but invariably you do – and you usually end up damaging your ratchet in the process. It doesn't have to be like that anymore because now there is the Koloss from Wera, **the first ratchet in the world that can safely be used as a hammer.**

The Koloss is a reversible, heavy-duty ratchet that can transfer at least **600 Nm** of torque. A double pawl mechanism and **a return angle of only 6°** allow you to tighten and loosen screws quickly and accurately even in cramped conditions.

**Best of all, no impact – absolutely no impact – can destroy the ratchet mechanism.**

**User benefits:**

- No need to carry two different tools
- The tool is unbreakable and so a long-term investment
- Completely safe
- A removable retaining ring makes the ratchet mechanism easy to clean or grease
- Easy cleaning/greasing for simple maintenance



Permanently locked, hardened square drive

The square drive gives way to impacts and cannot be damaged when the ratchet is used as a hammer

The push-through square drive, including the tooth system, is far more robust than a forward/reverse switch

Dry-fined striking face; rubber pad attachment to protect materials and surfaces

The drop-forged hammer head is pinned to the shaft in a form-fit joint

Sockets and accessories are easily attached

# A wide range of applications

- Mechanical engineering
- Shipbuilding
- Mining
- Aircraft construction
- Petroleum industry
- Industrial plant construction
- Scaffolding
- High rack systems
- Road building
- Bridge construction
- Railway construction and maintenance
- Commercial vehicle construction and maintenance

## The full range. Striking accessories



Multi-component Kraftform handle for optimum pressure, impact and tensile loads



The tubular shaft minimises impact vibrations



Adaptor for accessories



Here the extension can be used for better leverage



The Koloss extension for even more torque transfer



Tapered pin for aligning and centring



Protective pad to soften hammer blows, simply attach to the striking face



The holster helps to keep tools organised

### 8002 C Koloss 1/2" SB with 1/2" drive

**Application:** Ratchet function for 1/2" square sockets and 1/2" adaptors with square drive; with ball lock; hammer function, e.g. to align workpieces

**Design:** Push-through square drive for forward and reverse operation, fine-tooth ratchet mechanism, small return angle of only 6°, can transfer at least 600 Nm of torque; tubular shaft to minimise impact vibrations, drop-forged hammer head pinned to shaft in form-fit joint, dry-fined striking face

**Handle:** Multi-component Kraftform handle for optimum pressure, impact and tensile loads; Handle end contains adaptor for Koloss extension 8780 C and Koloss centring pin 8781 C



Code				
05073232001	8002 C	1 x 1/2"x341,0		1
	8782 C	1 x 50,0x50,0		
	holster	1 x holster		

### 8002 C Koloss 1/2" with 1/2" drive



Code				
05003692001	8002 C	1 x 1/2"x341,0		1
	8782 C	1 x 50,0x50,0		
	holster	1 x holster		

### 8002 C/6 Koloss 1/2" Display



Code				
05071196001	8002 C	6 x 1/2"x341,0		1
	8782 C	6 x 50,0x50,0		
	holster	6 x holster		

### 8780 C Koloss extension

**Application:** Extension for use with Wera Koloss 8002 C to increase the amount of torque transfer

**Design:** Tough tempered Cr-Mo steel

**Handle:** Multi-component Kraftform handle for optimum pressure, impact and tensile loads; safety instructions permanently laser engraved

Code	mm	mm	
05003695001	341,0	137,0	1

### 8781 C Koloss centring pin



**Application:** Centring pin for use with Wera Koloss 8002 C to align lugs or drill holes

**Design:** Tapered pin, tough tempered Cr-Mo steel

Code	mm	mm	
05003696001	135,0	85,0	1

### 8782 C Koloss Pad-Set

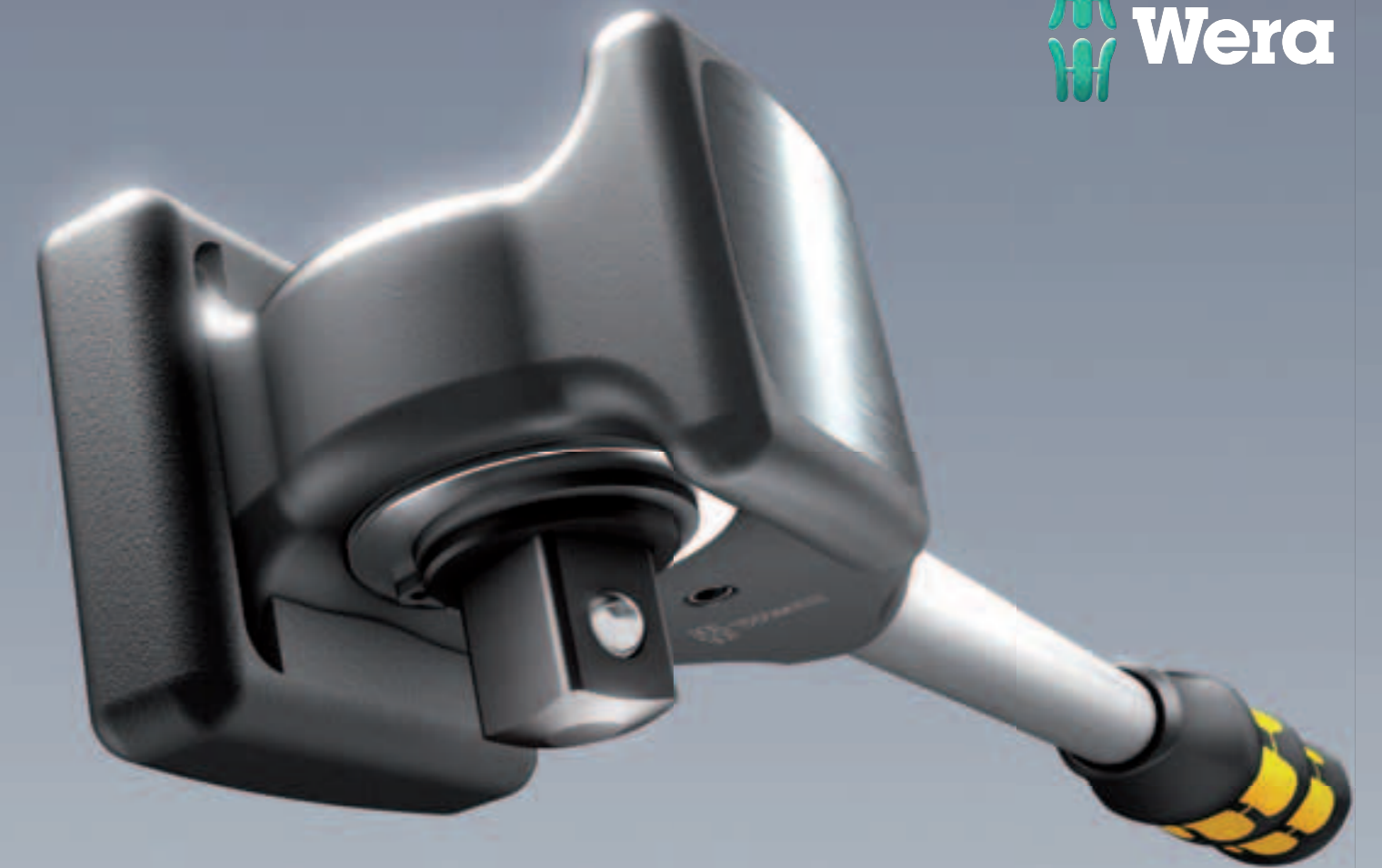
**Application:** Protective attachment for striking faces, for use with Wera Koloss 8002 C to protect materials and surfaces

**Design:** Flexible thermoplastic elastomer material for lasting elasticity and maximum protection

Code			
05003697001	8782 C	2 x 50,0x50,0	1



Wera Werk  
Hermann Werner GmbH & Co. KG  
Korzter Straße 21-25 ■ 42349 Wuppertal ■ Germany  
Phone: +49 (0)2 02 / 40 45-322  
Fax: +49 (0)2 02 / 40 36 34  
E-Mail: [info@wera.de](mailto:info@wera.de)  
Internet: [www.wera.de](http://www.wera.de)



# KOLOSS

The ratchet with hammer function