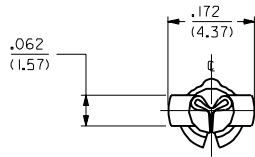


PART NO.	ENG. NO.
02-09-2133	1376-(P913)L
02-09-2134	1376-A(P913)L
02-09-6138	1376-(603)L
02-09-6132	1376-(558)L
02-09-6134	1376-A(558)L



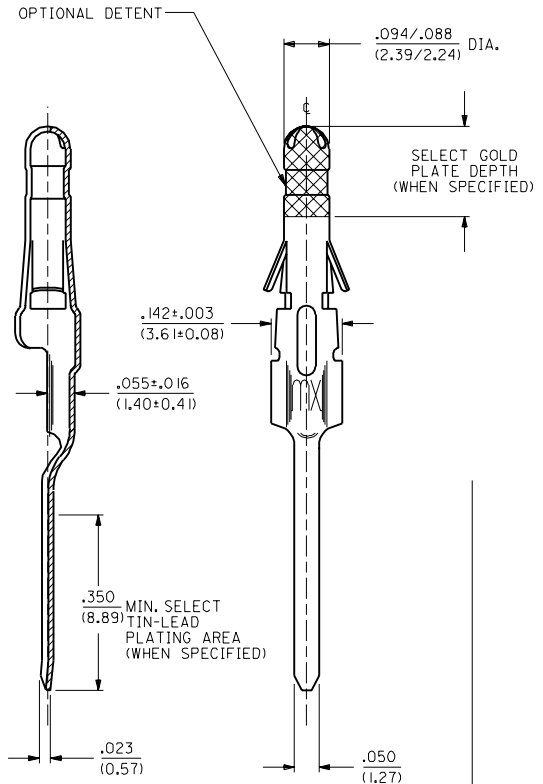
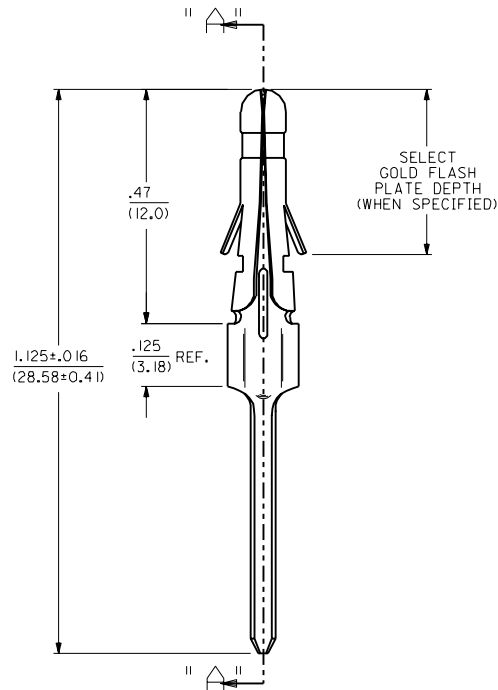
### LEGEND

1376-\*(\*\*\*\*)\*  
 OPTIONAL DETENT  
 BLANK=WITH DETENT  
 A= WITHOUT DETENT

FORM  
 L=LOOSE

P=PREPLATE  
 BLANK=POSTPLATE

FINISH CODE



SECT. "A-A"

### NOTES:

1. RECOMMENDED P.C. BOARD HOLE SIZE IS  $.062 \pm .002 / (1.57 \pm 0.05)$  DIA.
2. INSERTION FORCE; 3.5 LBS. MAX. WHEN TERMINAL IS INSERTED INTO AN .093 SERIES HOUSING.
3. THIS PART CONFORMS TO PROD. SPEC. 02-09.

### FINISH CODES:

- 913 HOT TIN-LEAD DIP .000100/(0.00254) MIN.
- 558 SELECT GOLD PLATE .000030/(0.00076) MIN. IN CONTACT AREA, OVER .000050/(0.00127) MIN. NICKEL OVERALL WITH .000010/(0.00025) MAX. GOLD FLASH.
- 603 SELECT GOLD PLATE .000030/(0.00076) MIN. IN CONTACT AREA, SELECT TIN-LEAD PLATE .000100/(0.00254) MIN. IN TAIL AREA OVER .000050/(0.00127) NICKEL OVERALL WITH SELECT GOLD FLASH .000010/(0.00025) MAX. IN AREA INDICATED.

MATERIAL:  
 CARTRIDGE BRASS, ALLOY #C26000,  
 .010/(0.25) THICK, SPRING TEMPER

REV.	DATE	BY	CHKD.
L	5/21/92	ECR	U2 0809
K	6/11/91	ECR	U1 0722
J	3/13/91	ECR	U1 0390

MFG. SH. REV. LTR. REVISIONS

DIMENSIONS SHOWN METRIC ( ) INCH		UNLESS OTHERWISE SPECIFIED TOLERANCES: ANGULAR ± 1/2°		REVISIONS	
INCH	METRIC	FILE NAME	SCALE	SHEET NO.	DATE
3 PLACE ± .010	---	S1376X1	6 : 1	1	2/18/91
2 PLACE ± .014	± 0.25	1376J.L.L.	60532	1	2/18/91
1 PLACE ---	± 0.36	MOLEX INCORPORATED	U.S.A.	1	2/18/91
DRAFT WHERE APPLICABLE MUST REMAIN WITHIN DIMENSIONS		TITLE		REVISE ONLY ON CAD SYSTEM	
P.C. TAIL TERMINAL MALE, .093/(2.36) DIA.		PART NO.		DRAWING NO.	
SEE CHART		SD-1376-		MOLEX INCORPORATED	
DRAWN BY: CWC		CHKD. BY: RW		DIV. CP	
APP'D BY: GWF		SCALE: 6 : 1		SIZE: C	