

**Type CP16 Series**



Specify the type CP16 for applications where high insulation resistance and voltage proof are key requirements. The materials used in the all-plastic body and spindle construction make it an ideal component for domestic appliances and control systems where safety is of prime importance. This popular low cost potentiometer is suitable for industrial and professional applications.

**Key Features**

- High Reliability
- Small Versatile Size
- All Plastic Body
- Plastic or Metal shaft styles
- Switch Types Available
- Attractively Priced
- Multiple Sections Available
- Flatted, Serrated Shaft Available

**Characteristics - Electrical**

<b>Resistance Range:</b>	100R to 4M7 Linear, 2K2 to 2M2 Non-Linear
<b>Resistance Values:</b>	1, 2.2 & 4.7 in each decade
<b>Resistance Tolerance:</b>	±20% (>1M ± 30%) - ±10% by selection
<b>Power Rating @ 40°C:</b>	0.2 Watts Linear - 0.1 Watts Non-Linear
<b>Limiting Element Voltage:</b>	250 Volts dc (Linear), 125 Volts dc (Non Linear)
<b>Electrical Rotation:</b>	260° ± 20°
<b>Terminal Resistance:</b>	5 ohms, maximum ≤0.1% (2 ohms, minimum)
<b>Noise (ENR):</b>	≤3% (3 ohms minimum)
<b>Insulation Resistance:</b>	4G ohms, minimum
<b>Resolution:</b>	Essentially Infinite
<b>Voltage Proof:</b>	1KV ac peak

**Characteristics - Mechanical**

<b>End Torque:</b>	400 mNm maximum
<b>Operating Torque:</b>	5 to 25 mNm maximum
<b>Mechanical Adjustment:</b>	300° ± 5°
<b>Maximum Torque to Nut:</b>	800 mNm

**Characteristics - Environmental**

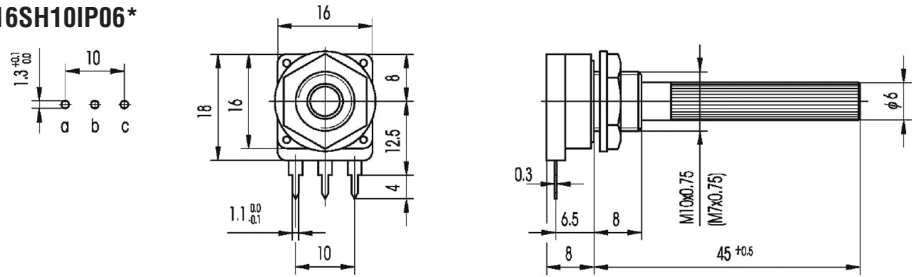
<b>Electrical Life:</b>	ΔR± 5% (1000 hours 0.2 Watts @ 40°C)
<b>Mechanical Life:</b>	25,000 operations
<b>Operating Temperature:</b>	-25°C to +70°C
<b>Temperature Coefficient:</b>	± 300ppm/°C (Rn <100K ohms)
<b>Thermal Cycling:</b>	ΔR± 2.5% (16 hours 85°C, 2 hours @ -25°C)
<b>Damp Heat:</b>	ΔR± 5% (500 hours @ 40°C +95% RH)
<b>Vibration:</b>	ΔR± 2% (2 hours @ 20g - 10Hz ~50 Hz)

**Switch Specifications**

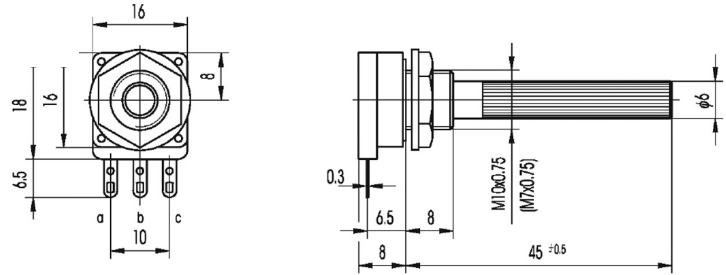
<b>Nominal Current:</b>	1A, 250 VAC
<b>Contact Resistance:</b>	10 milli ohms
<b>Operating Torque:</b>	10 to 30mNm
<b>Operating Angle:</b>	30° ± 5°
<b>Test Voltage:</b>	500 V

**Type CP16 Series**

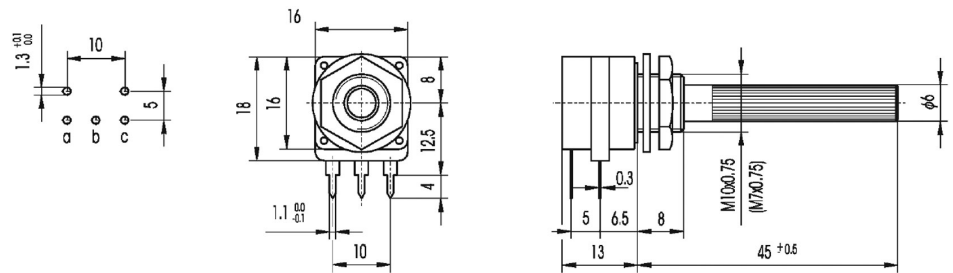
**Dimensions  
CP16SH10IP06\***



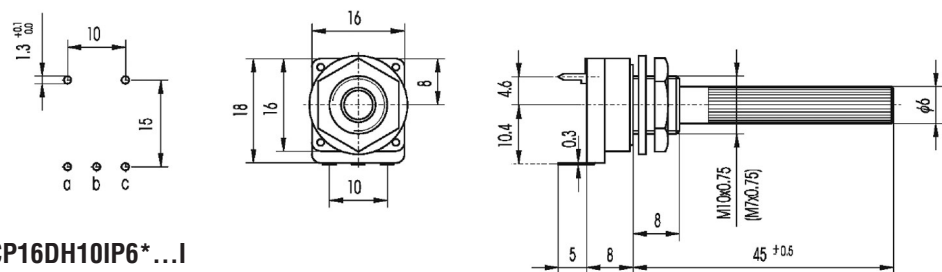
**CP16SH10CP06\***



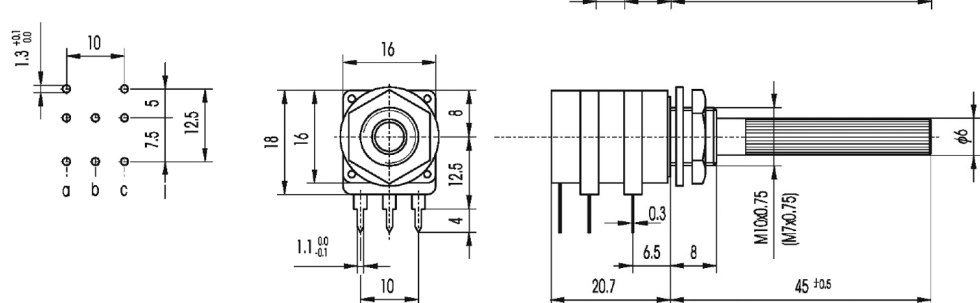
**CP16SH10IP6\*...I**



**CP16SV10IP6\*...**

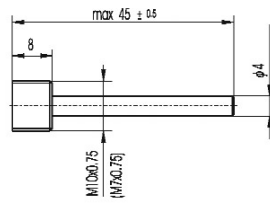


**CP16DH10IP6\*...I**

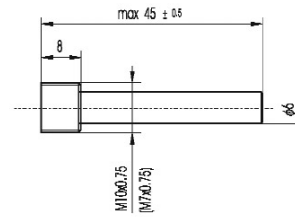


**Type CP16 Series**

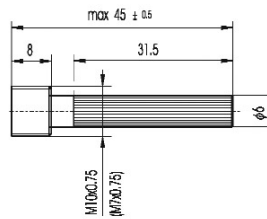
**Shaft Styles  
M04/M4**



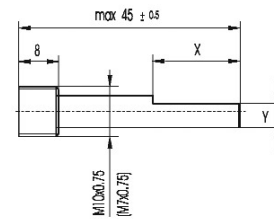
**R06/R6**



**P06/P6**



**F06/F6**



**How to Order  
CP16S**

Common Part	Style / Bush	Terminals	Shaft Type	Resistance Value	Law	Tolerance	Switch
CP16S – Single CP16D - Dual	H10 – Horz. M10 Bush V10 - Vert. M10 Bush	I – PCB C – Eyelet	P06/P6 Standard M04/M4 Metal 4mm F06/F6 Flatted 6mm R06/R6 Round 6mm	The first two digits are significant figures of resistance value. The third denotes the number of zeros following. e.g. 100R: 101 1K: 102 10K: 103 100K: 104	-- Linear B – Log C – Inverse Log	-- Standard K - 10%	-- No Switch I – Switched