

1. General

Li-Ion Battery Pack in shrink sleeve incl. safety circuit.

Weight: 50g

Cell: LIC18650-22C

PCM: RPOHR300

Configuration: 1s

2. Electrical Specification

Rated Capacity: 2100mAh min, 2200mAh typical

Nominal Voltage: 3.7V

Max. Operating Voltage Range: 2.75V (3.0V recommended) to 4.2V

Overcharge Detection: 4.30 to 4.35V (0.4 to 2.0sec. delay, resume 4.075)

Overdischarge Detection: 2.42 to 2.58V (40 to 200msec. delay, resume 2.90V)

Max. Continuous Charge current: 1.6A (1.1A recommended)

Max. Continuous Discharge Current: 2.2A

Overcurrent Detection: 3.0A to 5.0A (4 to 20msec. delay)

Internal Resistance: AC 150mOhm

Cycle Life: 70% after 300 cycles (0.5C/0.5C)

3. Ambient Conditions

Temperature Range

-Charge: 0 to 45°C

-Discharge: -20 to +60°C

-Storage: -20 to +35°C

Humidity: 65 +/- 20%RH

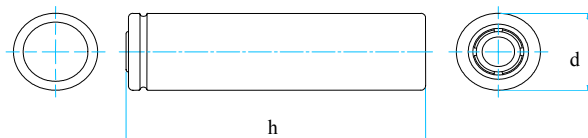
4. Safety

Please follow Handling and Safety Precautions Lilon

Freigabe

03	label (Li-Ion) added	07.10.03	erichter
02	modified description	30.09.03	rhahn
01	Pos. 10 added	07.04.03	erichter
Index Änderung / Alteration			
Freimaßtoleranzen	Maßstab Scale 1:1	Diese Maße werden besonders geprüft This dimensions are considered inspectable	
General tolerances	Als Betriebsgeheimnis anvertraut, alle Rechte vorbehalten. Proprietary data, company confidential, all rights reserved.	Material 56620 201 098	
up to 6 ± 0,1		Date	Name
over 6 up to 30 ± 0,2		Bearb. Desig.	11.03.03 erichter
over 30 up to 100 ± 0,3		Gepr. Check.	08.10.03 erichter
over 100 ± 0,5		Benennung / Designation	
VARTA THE BATTERY EXPERTS		Li-Ion 18650 WC	
Maße in mm All dimensions are in mm		Projection:	Zchnng. / Dwg.Nr.
Origin:		3	074055
repl.f.:		repl.by:	Alloc.: VZE01

Preliminary Data Sheet



Type Number:	56620
Designation IEC	---
System	Lithium-Ion Battery
Nominal Voltage:	3.70 V
Rated Capacity (0.2C / 2.75V):	2150 mAh
Typical Capacity (0.2C / 2.75V):	2200 mAh
Max Charge Voltage:	4.20 V
Max Charge Current:	2200 mA
Max Discharge Current:	4000 mA
Impedance AC at 1kHz, fully charged:	100 mOhm
Charge Conditions at:	
Standard Charge:	1100 mA 3h
Fast Charge:	2200 mA 2.5h
Life Time Expectancy at Cycling:	>70% after 300 cycles (0.5C/0.5C)
Dimensions:	
Diameter (d):	max. 18.25 mm
Height (h):	max. 65 mm
Weight, approx:	46 g
Volume:	16,6 cm ³
Energy Density:	492 Wh/l
Specific Energy:	177 Wh/kg
Temperature Ranges:	
Charge:	0°C ... 45°C
Discharge	-20°C ... 60°C
Storage: -20°C up to +60°C	1 month
Storage: -20°C up to +45°C	3 month
Storage: -20°C up to +20°C	1 year

All Data contained herein is for single cells

For battery applications, performance data may vary from single cell data, depending on specific battery configuration

VARTA Microbattery GmbH, Daimlerstr. 1, D-73479 Ellwangen/Jagst

Subject to change without prior notice!

Tel.: (+49) 7961/921-0, Telefax: (+49) 7961/921-553

Date of issue: 22.05.03