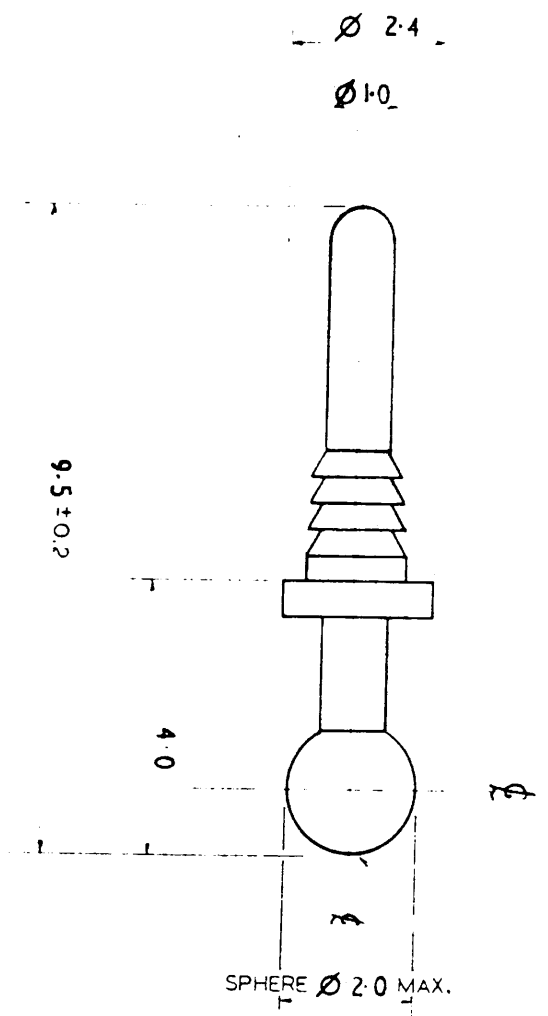


DRG No	CP 12329	ISSUE	2	TYPE No.	OSO-U-B2	ANGLE PROJECTION		DIM IN	INCHES MILLIMETRES	DO NOT SCALE	THIS DRAWING IS THE PROPERTY OF OXLEY DEVELOPMENTS LTD AND MUST NOT BE REPRODUCED OR DISCLOSED TO A THIRD PARTY WITHOUT THE WRITTEN CONSENT OF THE COMPANY
--------	----------	-------	---	----------	----------	------------------	--	--------	----------------------------------	--------------	--

THIS DRAWING, THE COPYRIGHT AND DESIGN RIGHT THEREIN ARE THE PROPERTY OF OXLEY DEVELOPMENTS LTD AND MUST NOT BE REPRODUCED OR DISCLOSED TO A THIRD PARTY WITHOUT THE WRITTEN CONSENT OF THE COMPANY

27 OCT 1992

TO SUIT SNAPLOX SOCKET TYPE LS-B-2-156



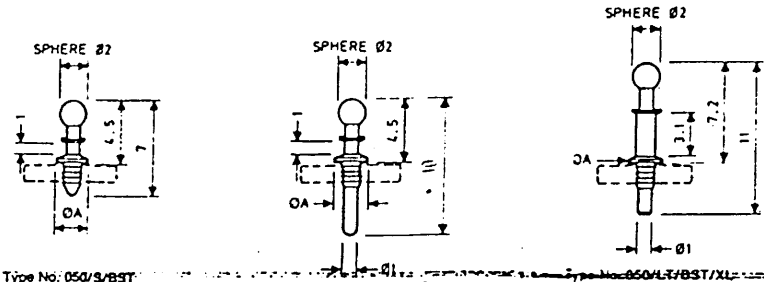
MOUNTING HOLE Ø: 1.25mm - 1.40mm

		Tel 0229 52521 Telex 65141	OXLEY DEVELOPMENTS COMPANY LTD. Uiverston Cumbria LA12 9QG ENGLAND	SCALE 10 : 1	TYPE No OSO-U-B2	DRG No CP 12329	ISSUE 2
--	--	-------------------------------	---	-----------------	---------------------	--------------------	------------

ISS	2	DATE	20.2.76
APPROVED		DATE	20.2.76
PREPARED	<i>PAUL MORRIS</i>	DATE	
CHECKED		DATE	
DATE		DATE	
REMARKS			
TITLE	2mm SNAPLOX PIN		

CONNECTORS

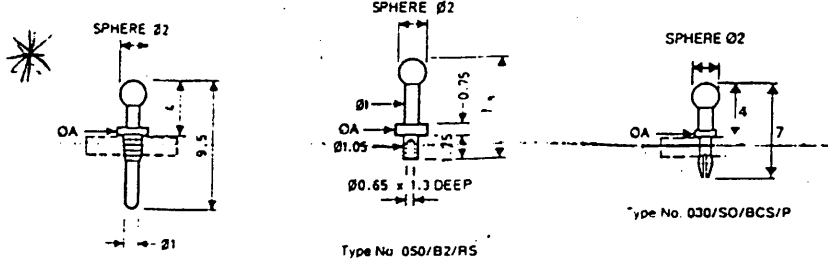
145-327



Type No. 050/S/BST

Type No. 050/LT/BST

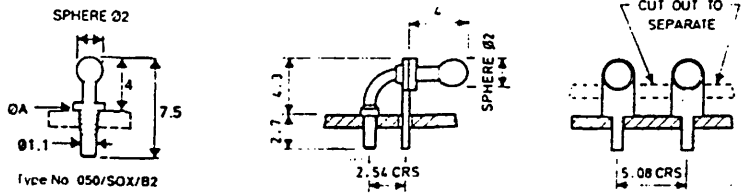
Type No. 050/LT/BST/XL



Type No. 050/LT/B2

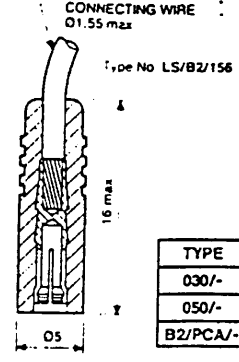
Type No. 050/B2/RS

Type No. 030/SO/BCS/P



Type No. 050/SOX/B2

Type No. B2/PCA—Available up to 10 ways



Type No. LS/B2/156

CONNECTING WIRE
Ø1.55 max

MOUNTING HOLE - Ø1

DIMENSIONS IN mm SCALE 2:1

TYPE	ØA	Mounting Hole diameter	Minimum board thickness
030/-	1.5	0.81 to 0.92 = (.035 ± .003")	1.4mm (0.055")
050/-	2.4	1.25 to 1.40mm = (.051 ± .003")	1.4mm (0.055")
B2/PCA/-	—	1.0mm = (.041 ± .003")	1.4mm (0.055")

MATERIALS

Pin
Contact: Brass to BS2874 CZ121
Finish (Snaplox): Palladium
(Kinky Pin Snaplox): Gold

Socket
Contact: Brass to BS2874 CZ121
Finish: Silver
Insulation: High dispersion grade PTFE

Coding Ring
Coding Rubber

QUALIFICATION APPROVAL (most types)

BS 9525 F0003 (Def Stan 59-35/3/4)

Lock PTFE Insulated Terminals, Plugs and Sockets, Snale®
icators, Controlox® Matrix Plugboards and Control Systems.

arks of Oxley Developments Company Ltd.

OXLEY DEVELOPMENTS
FACSIMILE: (0229) 55094