

AMPMODU MOD IV Receptacle Housings & MOD IV / V Receptacle Contacts

- Single and double row
- With or without strain relief feature
- Gold or tin plated crimp snap-in contacts

Specification:

Housing - Green polyimide
UL 94V-HB

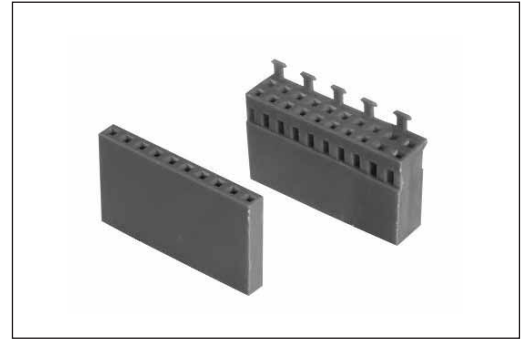
Contacts - Phosphor bronze

Current Rating - 3A

Mating Connectors:

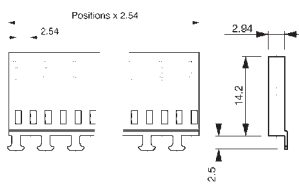
With strain relief -
MOD II Pin Headers - Page 19

Without strain relief -
MOD II Pin Headers - Pages 17 & 18

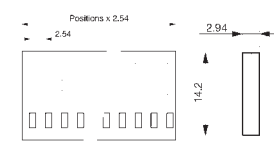


Single Row

with Strain Relief

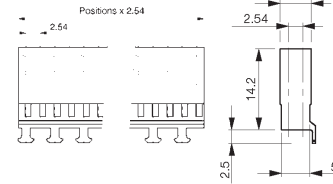


without Strain Relief

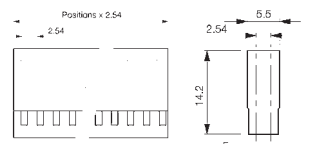


Double Row

with Strain Relief



without Strain Relief



No. of Positions	Part Number	
	With Strain Relief	Without Strain Relief
2	925369-2	925366-2
3	925369-3	925366-3
4	925369-4	925366-4
5	925369-5	925366-5
6	925369-6	925366-6
7	925369-7	925366-7
8	925369-8	925366-8
10	1-925369-0	1-925366-0

Keying Plug	926519-2
-------------	----------

No. of Positions	Part Number	
	With Strain Relief	Without Strain Relief
2 x 2	925370-2	925367-2
2 x 3	925370-3	925367-3
2 x 4	925370-4	925367-4
2 x 5	925370-5	925367-5
2 x 6	925370-6	925367-6
2 x 7	925370-7	925367-7
2 x 8	925370-8	925367-8
2 x 10	1-925370-0	1-925367-0

Keying Plug	926519-2
-------------	----------

MOD IV Crimp Snap-in Contacts - Standard Contact Pressure

Wire Size Range mm ²	AWG	Insulation Diameter mm	Packaging	Part Number 0.8µm Gold
0.2 - 0.56	24 - 20	1.4	Tape and Reel	167300-6
0.14 - 0.12*	26		Loose Piece	141603-3

MOD IV Crimp Snap-in Contacts - Intermediate Contact Pressure

Wire Size Range mm ²	AWG	Insulation Diameter mm	Packaging	Part Number	
				0.8µm Gold	Tin
0.032 - 0.09	32 - 28	1.2	Tape and Reel	167021-2	167021-3
			Loose Piece	167024-2	167024-3
0.2 - 0.56	24 - 20	1.4	Tape and Reel	167301-4	2-167301-2
			Loose Piece	141708-1	1-141708-1

MOD V Crimp Snap-in Contacts - High Contact Pressure

Wire Size Range mm ²	AWG	Insulation Diameter mm	Packaging	Part Number	
				0.8µm Gold	Tin
0.2 - 0.56	24 - 20	1.4	Tape and Reel	166309-2	166309-3
			Loose Piece	166310-2	166310-3

* Contact Tyco Electronics for this wire size range