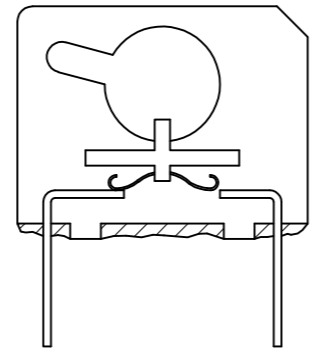
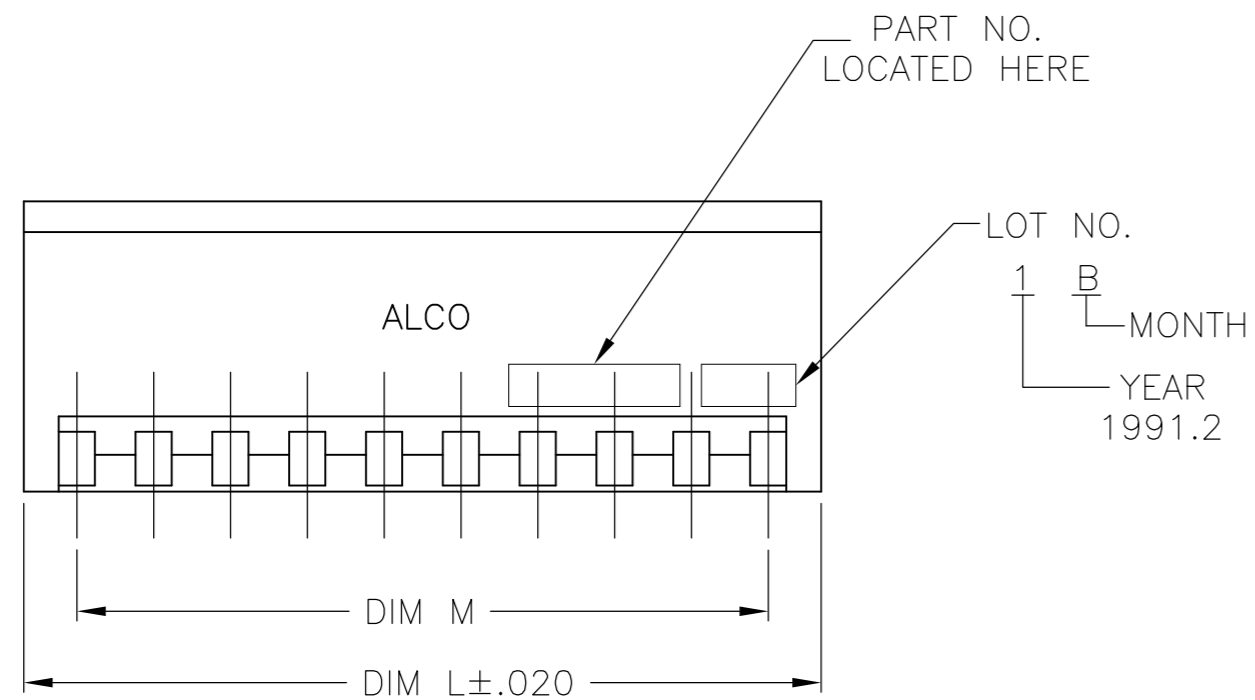
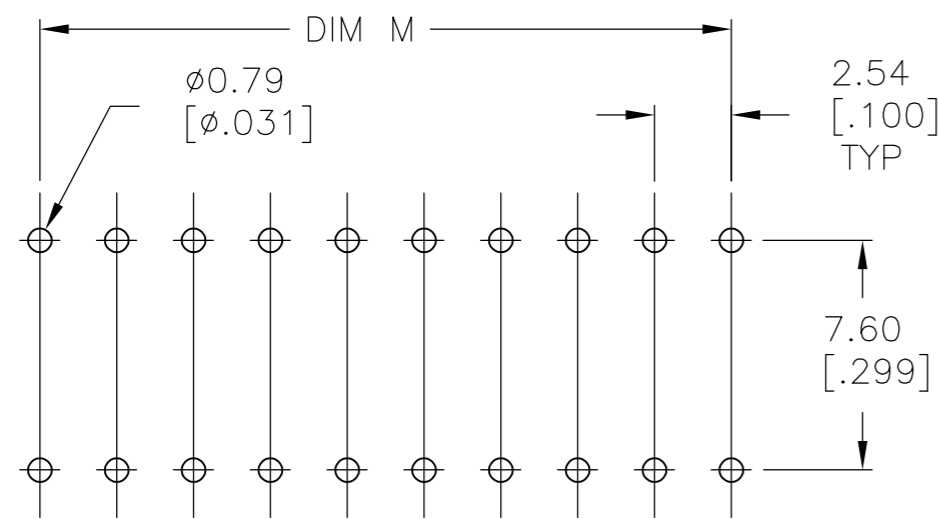
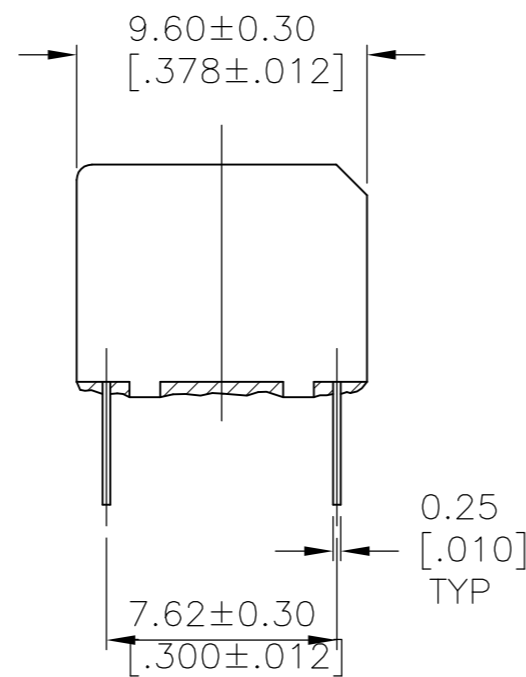
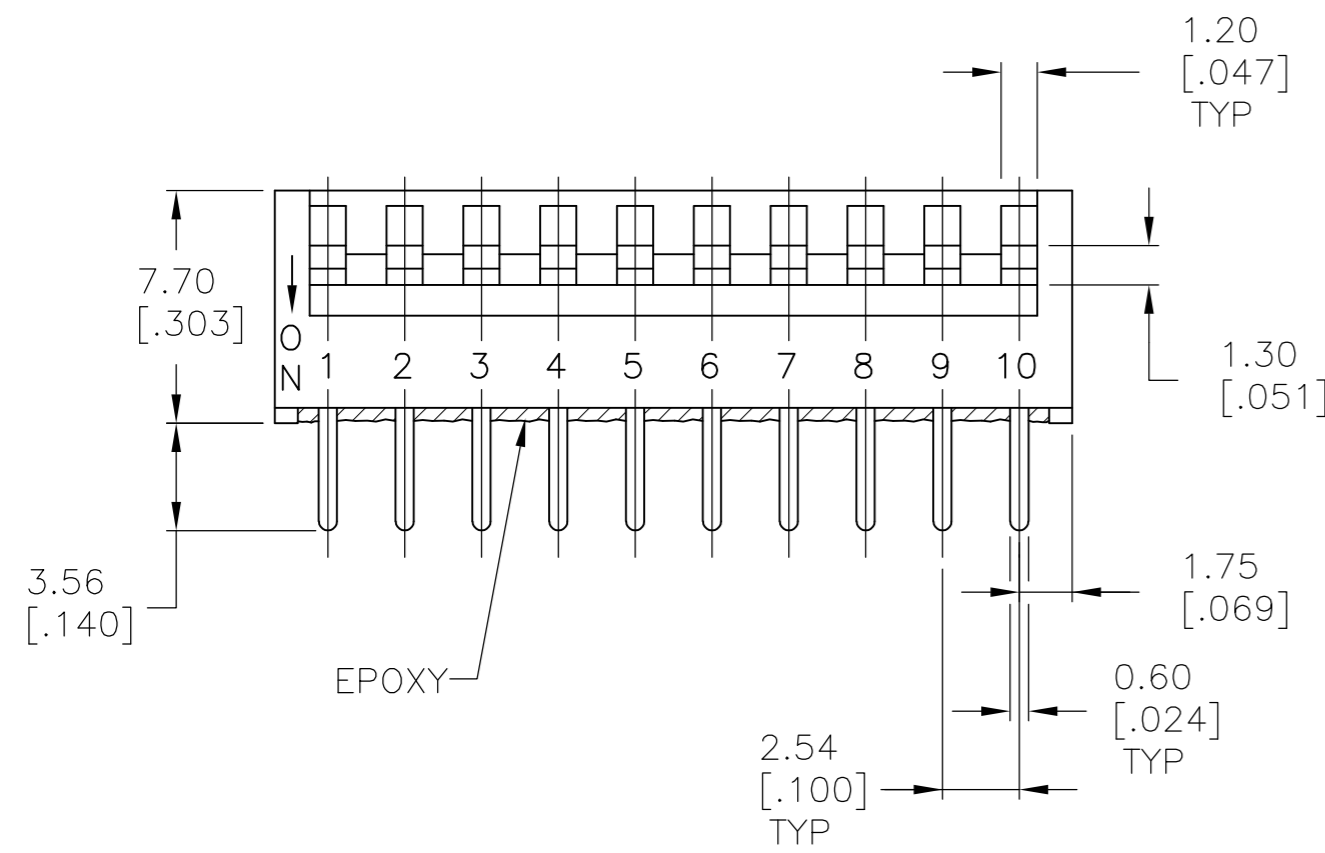


THIS DRAWING IS UNPUBLISHED. RELEASED FOR PUBLICATION 1571998, 1571998  
 © COPYRIGHT 1571998 BY TYCO ELECTRONICS CORPORATION. ALL INTERNATIONAL RIGHTS RESERVED.

| LOC |     | DIST                      |  | REVISIONS |     |      |  |
|-----|-----|---------------------------|--|-----------|-----|------|--|
| P   | LTR | DESCRIPTION               |  | DATE      | DWN | APVD |  |
|     | A3  | REVISED PER ECO-09-011017 |  | 08MAY09   | HMR | MW   |  |
|     | A4  | REVISED PER ECO-10-000443 |  | 18JAN10   | KK  | HMR  |  |



CROSS SECTION



RECOMMENDED BOARD LAYOUT

THRU HOLE VERSION

**SPECIFICATIONS:**

**MATERIALS:**

CASE: PPS, UL94V0-BLACK  
 COVER: PPS, UL94V0-BLACK  
 ACTUATOR: LCP, UL94V0-WHITE  
 CONTACTS AND TERMINALS: COPPER ALLOY, GOLD OVER NICKEL  
 TAPE SEAL: POLYIMIDE FILM

**ELECTRICAL:**

CONTACT RATING: NON-SWITCHING: 100MA @ 50VDC  
 SWITCHING: 25MA 24VDC  
 INITIAL CONTACT RESISTANCE: 100 MILLIOHMS MAX. @ 2VDC, 10MA  
 INSULATION RESISTANCE: 100 MEGOHMS MIN. @ 100VDC  
 DIELECTRIC STRENGTH: 300VAC FOR 1 MINUTE  
 LIFE EXPECTANCY: 1000 CYCLES

**MECHANICAL:**

ACTUATION FORCE: 600 GRAMS MAX

**ENVIRONMENTAL:**

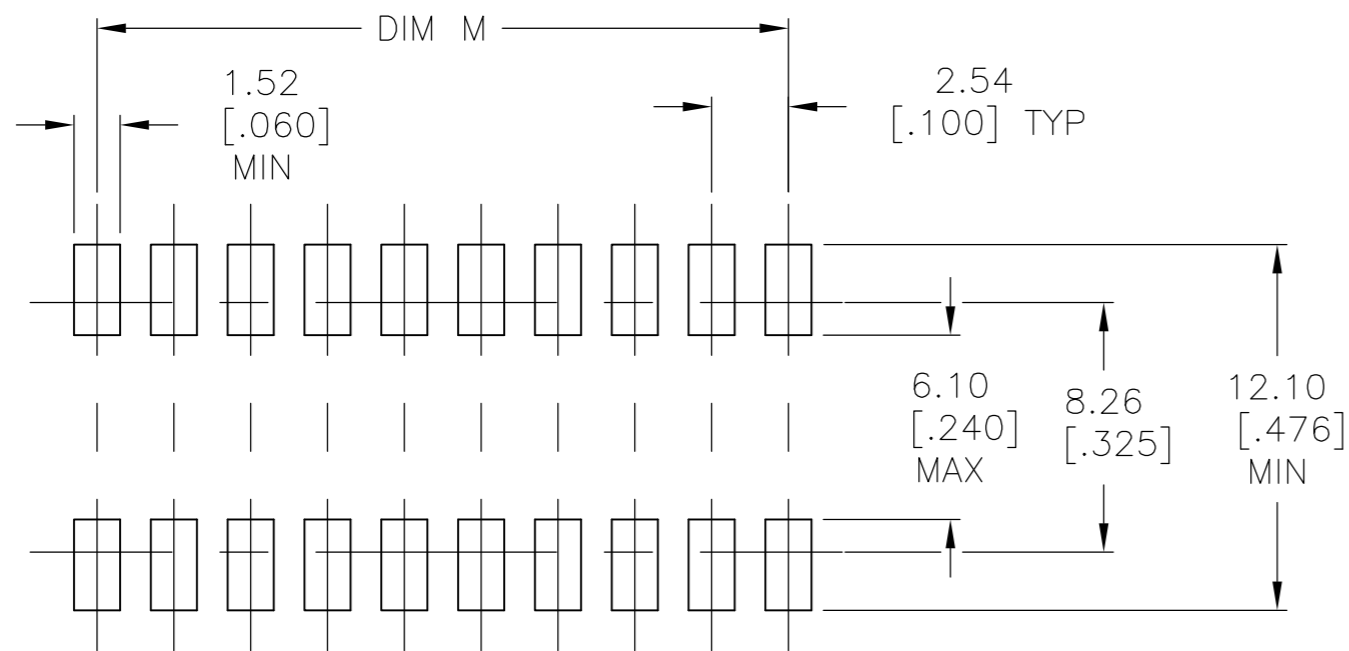
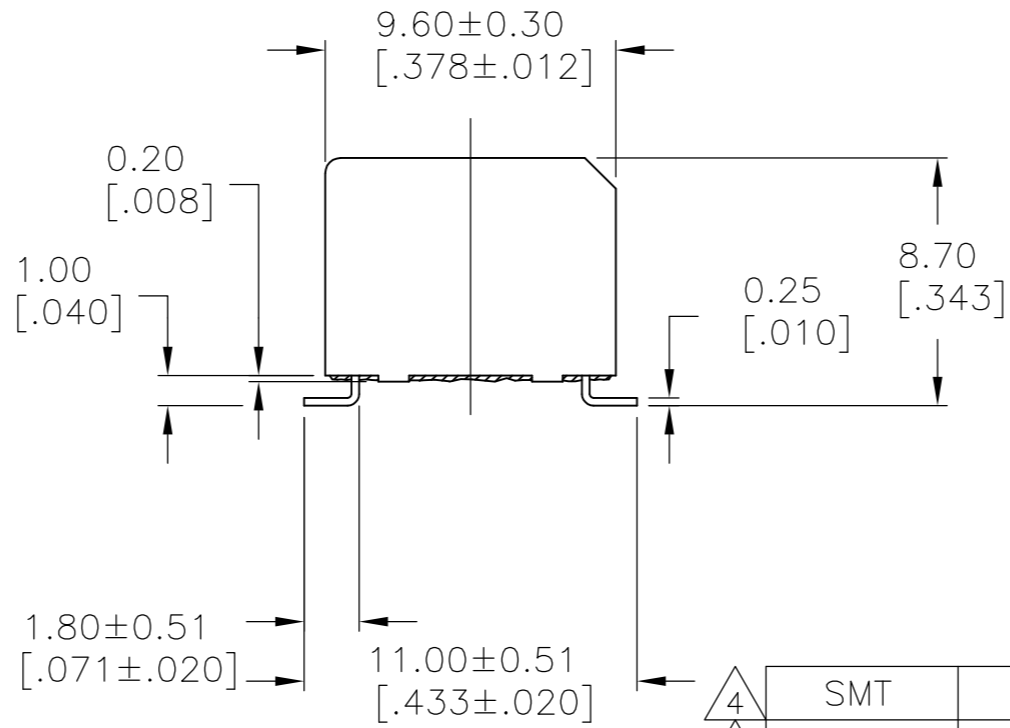
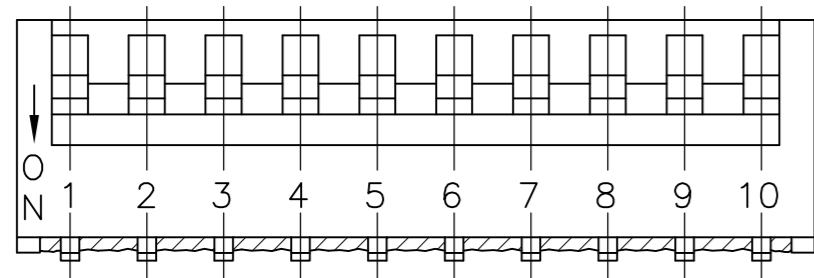
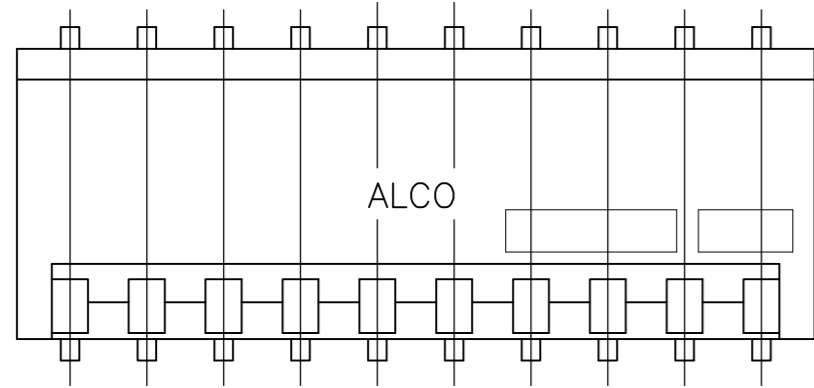
OPERATING TEMPERATURE: -30°C TO +85°C  
 STORAGE TEMPERATURE: -45°C TO +100°C  
 SOLDER HEAT RESISTANCE PER 109-202, CONDITION B (THRU-HOLE) OR 109-201, CONDITION B (SMT)  
 SOLDERABILITY PER JIS C 0500 & JIS C 0053

- FOR P/N TABLE & SURFACE MOUNT DETAILS SEE SHEET 2
- TAPE AND REEL PACKAGING PER EIA 481 - PART NO.S GDSXXSTR.
- ALL MATERIALS AND FINISHES SHALL COMPLY WITH EU DIRECTIVE 2002/95/EC OF 27JAN2003 (ROHS)
- SWITCH TO BE RECEIVED IN THE "ON" POSITION.
- OBSOLETE PARTS: OBSOLETE CIS STREAMLINING PER D.RENAUD/D.SINISI

|  |  |                             |   |                    |
|--|--|-----------------------------|---|--------------------|
| THIS DRAWING IS A CONTROLLED DOCUMENT. |  | DWN<br>R BROWN<br>04JAN06   | Tyco Electronics Corporation<br>Harrisburg, Pa 17105-3608 |                    |
| DIMENSIONS:<br>mm [INCHES]             |  | CHK<br>M SARVER<br>04JAN06  | NAME<br>DIP SWITCH ASSEMBLY<br>GDP SERIES                 |                    |
| TOLERANCES UNLESS OTHERWISE SPECIFIED: |  | APVD<br>M SARVER<br>04JAN06 | SIZE<br>A2  | CAGE CODE<br>-     |
| 0 PLC ± -                              |  | PRODUCT SPEC                | DRAWING NO<br>C=1571998                                   | RESTRICTED TO<br>- |
| 1 PLC ± -                              |  | APPLICATION SPEC            | SCALE<br>4:1  | SHEET<br>1 OF 2    |
| 2 PLC ± .030 (.012)                    |  | WEIGHT<br>-                 | REV<br>A4   |                    |
| 3 PLC ± -                              |  | CUSTOMER DRAWING            |   |                    |
| 4 PLC ± -                              |  |                             |   |                    |
| ANGLES ± -                             |  |                             |   |                    |
| FINISH                                 |  |                             |   |                    |

THIS DRAWING IS UNPUBLISHED. RELEASED FOR PUBLICATION 1571998, 1571998  
 © COPYRIGHT 1571998 BY TYCO ELECTRONICS CORPORATION. ALL INTERNATIONAL RIGHTS RESERVED.

| LOC | DIST | REVISIONS |     |             |      |     |      |
|-----|------|-----------|-----|-------------|------|-----|------|
| AD  | 00   | P         | LTR | DESCRIPTION | DATE | DWN | APVD |
|     |      | -         |     | SEE SHEET 1 |      | -   | -    |



RECOMMENDED BOARD LAYOUT  
 BOARD LAYOUT TOLERANCE  
 ±.002 FOR ALL DIMENSIONS

SURFACE MOUNT VERSION

|   |          |      |              |               |      |              |             |
|---|----------|------|--------------|---------------|------|--------------|-------------|
| 4 | SMT      | TAPE | 7.62 [.300]  | 11.13 [.438]  | 4    | GDP04STRON04 | 2-1571998-2 |
| 4 | SMT      | TAPE | 17.78 [.700] | 21.29 [.838]  | 8    | GDP08STRON04 | 2-1571998-1 |
| 5 | OBSOLETE | SMT  | 22.86 [.900] | 26.37 [1.038] | 10   | GDP10STR04   | 2-1571998-0 |
| 5 | OBSOLETE | SMT  | 22.86 [.900] | 26.37 [1.038] | 10   | GDP10S04     | 1-1571998-9 |
| 5 | OBSOLETE | T/H  | NONE         | 22.86 [.900]  | 10   | GDP10NTS04   | 1-1571998-8 |
| 5 | OBSOLETE | T/H  | TAPE         | 22.86 [.900]  | 10   | GDP1004      | 1-1571998-7 |
| 5 | OBSOLETE | SMT  | 17.78 [.700] | 21.29 [.838]  | 8    | GDP08STR04   | 1-1571998-6 |
| 5 | OBSOLETE | SMT  | 17.78 [.700] | 21.29 [.838]  | 8    | GDP08S04     | 1-1571998-5 |
| 5 | OBSOLETE | T/H  | NONE         | 17.78 [.700]  | 8    | GDP08NTS04   | 1-1571998-4 |
| 5 | OBSOLETE | T/H  | TAPE         | 17.78 [.700]  | 8    | GDP0804      | 1-1571998-3 |
| 5 | OBSOLETE | SMT  | 12.70 [.500] | 16.21 [.638]  | 6    | GDP06STR04   | 1-1571998-2 |
| 5 | OBSOLETE | SMT  | 12.70 [.500] | 16.21 [.638]  | 6    | GDP06S04     | 1-1571998-1 |
| 5 | OBSOLETE | T/H  | NONE         | 12.70 [.500]  | 6    | GDP06NTS04   | 1-1571998-0 |
| 5 | OBSOLETE | T/H  | TAPE         | 12.70 [.500]  | 6    | GDP0604      | 1571998-9   |
| 5 | OBSOLETE | SMT  | 7.62 [.300]  | 11.13 [.438]  | 4    | GDP04STR04   | 1571998-8   |
| 5 | OBSOLETE | SMT  | 7.62 [.300]  | 11.13 [.438]  | 4    | GDP04S04     | 1571998-7   |
| 5 | OBSOLETE | T/H  | NONE         | 7.62 [.300]   | 4    | GDP04NTS04   | 1571998-6   |
| 5 | OBSOLETE | T/H  | TAPE         | 7.62 [.300]   | 4    | GDP0404      | 1571998-5   |
| 5 | OBSOLETE | SMT  | 2.54 [.100]  | 6.05 [.238]   | 2    | GDP02STR04   | 1571998-4   |
| 5 | OBSOLETE | SMT  | 2.54 [.100]  | 6.05 [.238]   | 2    | GDP02S04     | 1571998-3   |
| 5 | OBSOLETE | T/H  | NONE         | 2.54 [.100]   | 2    | GDP02NTS04   | 1571998-2   |
| 5 | OBSOLETE | T/H  | TAPE         | 2.54 [.100]   | 2    | GDP0204      | 1571998-1   |
|   | MTG      | SEAL | DIM M        | DIM L         | POLE | OLD T&B P/N  | TE P/N      |

THIS DRAWING IS A CONTROLLED DOCUMENT.

|      |          |         |
|------|----------|---------|
| DWN  | R BROWN  | 04JAN06 |
| CHK  | M SARVER | 04JAN06 |
| APVD | M SARVER | 04JAN06 |

Tyco Electronics Corporation  
 Harrisburg, Pa 17105-3608

NAME: DIP SWITCH ASSEMBLY GDP SERIES

|       |     |           |        |            |           |               |   |
|-------|-----|-----------|--------|------------|-----------|---------------|---|
| SIZE  | A2  | CAGE CODE | -      | DRAWING NO | C=1571998 | RESTRICTED TO | - |
| SCALE | 4:1 | SHEET     | 2 OF 2 | REV        | A4        |               |   |

CUSTOMER DRAWING