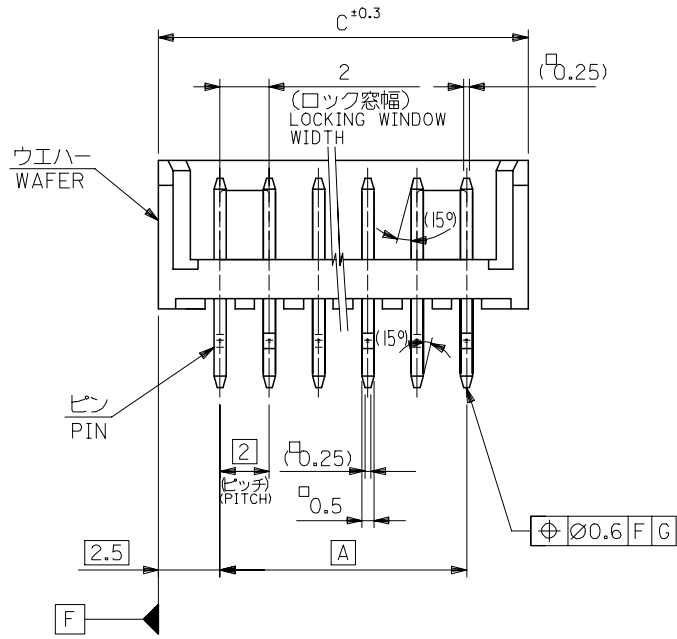


注記 NOTES

1. 材料 MATERIAL
 ウエハー: PBT (ガラス 15% 入り)
 WAFER: G.F. 15%
 UL94V-0
 ビン: 黄銅, 錫メッキ
 PIN: BRASS, TIN
2. 嵌合相手: 52418 シリーズ
 MATE WITH: 52418 SERIES
3. キンクは全ピンに交互に付加.
 SET KINK ALTERNATELY TO ALL PIN.
4. 各部のソリは 0.2MAX.
 CAMBER: 0.2MAX.
5. 本製品は、53290-**10 の鉛フリー品である。
 THIS PRODUCT IS LEAD FREE OF 53290-**10.
6. 梱包仕様 PACKAGING
 53290-**8* トレー TRAY
 53290-**4* ポリ袋 POLYBAG



| | | | | | | |
|---|--|-------|----------------------------|---|---|------------------------|
| REVISED EC NO: J2005-2460 DRAWN: NAIDA CHKD: KTOJO APPR: NUKITA 2005/02/25 2005/02/28 2005/03/07 | GENERAL TOLERANCES (UNLESS SPECIFIED) | | DIMENSION STYLE MM ONLY | SCALE --- | DESIGN UNITS METRIC | THIRD ANGLE PROJECTION |
| | 10 UNDER | ±0.2 | DRAWN BY J. SASAMO | DATE 2004/8/20 | TITLE 2.0 BOARD TO BOARD CONN. WAFER ASS'Y -LEAD FREE- | |
| | 10 OVER 30 UNDER | ±0.25 | CHECKED BY K. TOJO | DATE 2004/8/20 | MOLEX INCORPORATED | |
| | 30 OVER | ±0.3 | APPROVED BY N. UKITA | DATE 2004/8/20 | DOCUMENT NO. SD-53290-004 | SHEET NO. 1 OF 2 |
| | ANGULAR | ±3 ° | MATERIAL NO. SEE CHART | THIS DRAWING CONTAINS INFORMATION THAT IS PROPRIETARY TO MOLEX INCORPORATED AND SHOULD NOT BE USED WITHOUT WRITTEN PERMISSION | | |
| | DRAFT WHERE APPLICABLE MUST REMAIN WITHIN DIMENSIONS | | SIZE A3 | | | |

| | | | | | | | |
|----------------|-------|----|------------|-----|--------------|------------|------|
| 43 | 41.64 | 38 | 53290-2041 | - | 53290-2040 | 53290-2080 | 20 |
| 41 | 39.64 | 36 | └ -1941 | └ - | └ -1940 | └ -1980 | 19 |
| 39 | 37.64 | 34 | └ -1841 | └ - | └ -1840 | └ -1880 | 18 |
| 37 | 35.64 | 32 | └ -1741 | └ - | └ -1740 | └ -1780 | 17 |
| 35 | 33.64 | 30 | └ -1641 | └ - | └ -1640 | └ -1680 | 16 |
| 3 ² | 31.64 | 28 | └ -1541 | └ - | └ -1540 | └ - | |
| | | | └ -1441 | └ - | └ -1440 | └ - | |
| | | | └ -1341 | └ - | └ -1340 | └ - | |
| | | | └ -1241 | └ - | └ -1240 | └ - | |
| | | | └ -1141 | └ - | └ -1140 | └ - | |
| | | | └ -1041 | └ - | └ -1040 | └ - | |
| | | | └ -0941 | └ - | └ -0940 | └ - | |
| | | | └ -0841 | └ - | └ -0840 | └ - | |
| | | | └ -0741 | └ - | └ -0740 | └ - | |
| | | | └ -0641 | └ - | └ -0640 | └ - | |
| | | | └ -0541 | └ - | └ -0540 | └ - | |
| | | | └ -0441 | └ - | └ -0440 | └ - | |
| 9 | 7.64 | 4 | 53290-0341 | - | 53290-0340 | - | |
| | | | | | MATERIAL NO. | | CKT. |