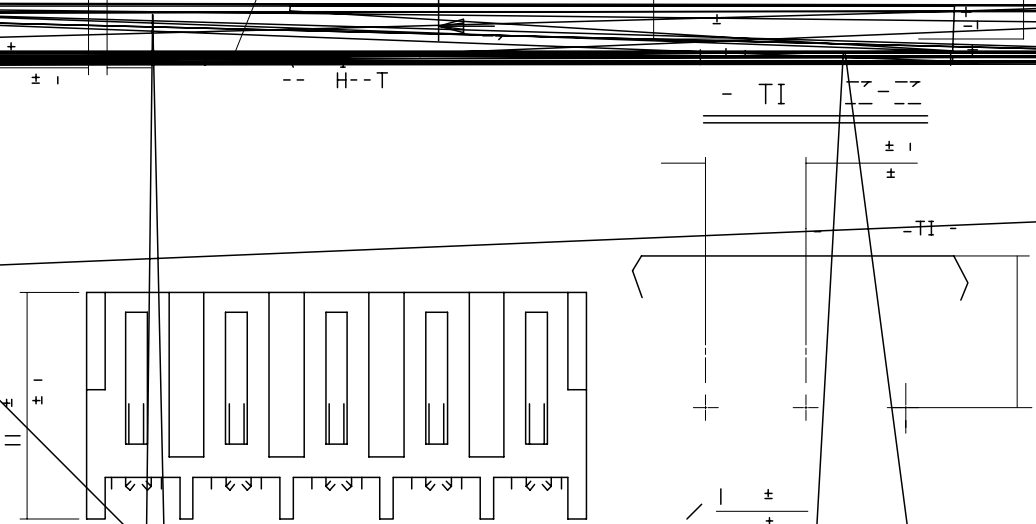
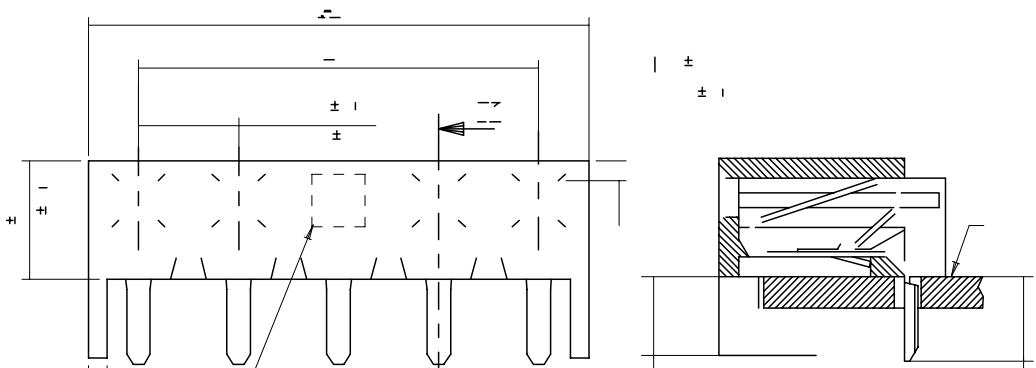


CCT	PART No.	ENG No.	DIM \pm	DIM $-$
2	10-10-1021	AE-3002-2A	5.08 ± 0.10 .200 $\pm .004$	10.16 ± 0.15 .400 \pm
3	-1031	-3A	10.16 \pm .400 $\pm .004$	15.24 ± 0.15 .600 $\pm .006$
4	-1041	-4A	15.24 \pm .600 $\pm .004$	20.32 ± 0.15 .800 $\pm .006$
5	-1051	-5A	20.32 \pm .800 $\pm .004$	25.40 ± 0.15 1.000 $\pm .006$
6	-1061	-6A	25.40 \pm 1.000 $\pm .004$	30.48 ± 0.20 1.200 $\pm .008$
7	-1071	-7A	30.48 \pm 1.200 $\pm .008$	35.56 ± 0.20 1.400 $\pm .008$
8	-1081	-8A	35.56 \pm 1.400 $\pm .008$	40.64 ± 0.20 1.600 $\pm .008$
9	-1091	-9A	40.64 \pm 1.600 $\pm .008$	45.72 ± 0.20 1.800 $\pm .008$
10	-1101	-10A	45.72 \pm 1.800 $\pm .008$	50.80 ± 0.20 2.000 $\pm .008$
11	-1111	-11A	50.80 \pm 2.000 $\pm .008$	55.88 ± 0.30 2.200 $\pm .012$
12	-1121	-12A	55.88 \pm 2.200 $\pm .010$	60.96 ± 0.30 2.400 $\pm .012$
13	-1131	-13A	60.96 \pm 2.400 $\pm .010$	66.04 ± 0.30 2.600 $\pm .012$
14	-1141	-14A	66.04 \pm 2.600 $\pm .010$	71.12 ± 0.30 2.800 $\pm .012$
15	-1151	-15A	71.12 \pm 2.800 $\pm .010$	76.20 ± 0.30 3.000 $\pm .012$
16	-1161	-16A	76.20 \pm 3.000 $\pm .010$	81.28 ± 0.40 3.200 $\pm .016$
17	-1171	-17A	81.28 \pm 3.200 $\pm .012$	86.36 ± 0.40 3.400 $\pm .016$
18	-1181	-18A	86.36 \pm 3.400 $\pm .012$	91.44 ± 0.40 3.600 $\pm .016$
19	-1191	-19A	91.44 \pm 3.600 $\pm .012$	96.52 ± 0.40 3.800 $\pm .016$
20	10-10-1201	AE-3002-20A	96.52 \pm 3.800 $\pm .012$	101.60 ± 0.40 4.000 $\pm .016$



T-
 I H I I - -T \-
 H I IT- - - \ I I \ / \ \pm
 T- \ I - H \ H T T I I I - /
 - I I
 H K - -I - -

ENG NO. CORRECTION

0
0

SEE CHART