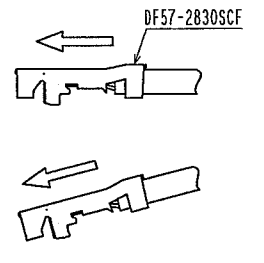


① FIGURE OF INSERTION ⚠

HORIZONTALLY ○

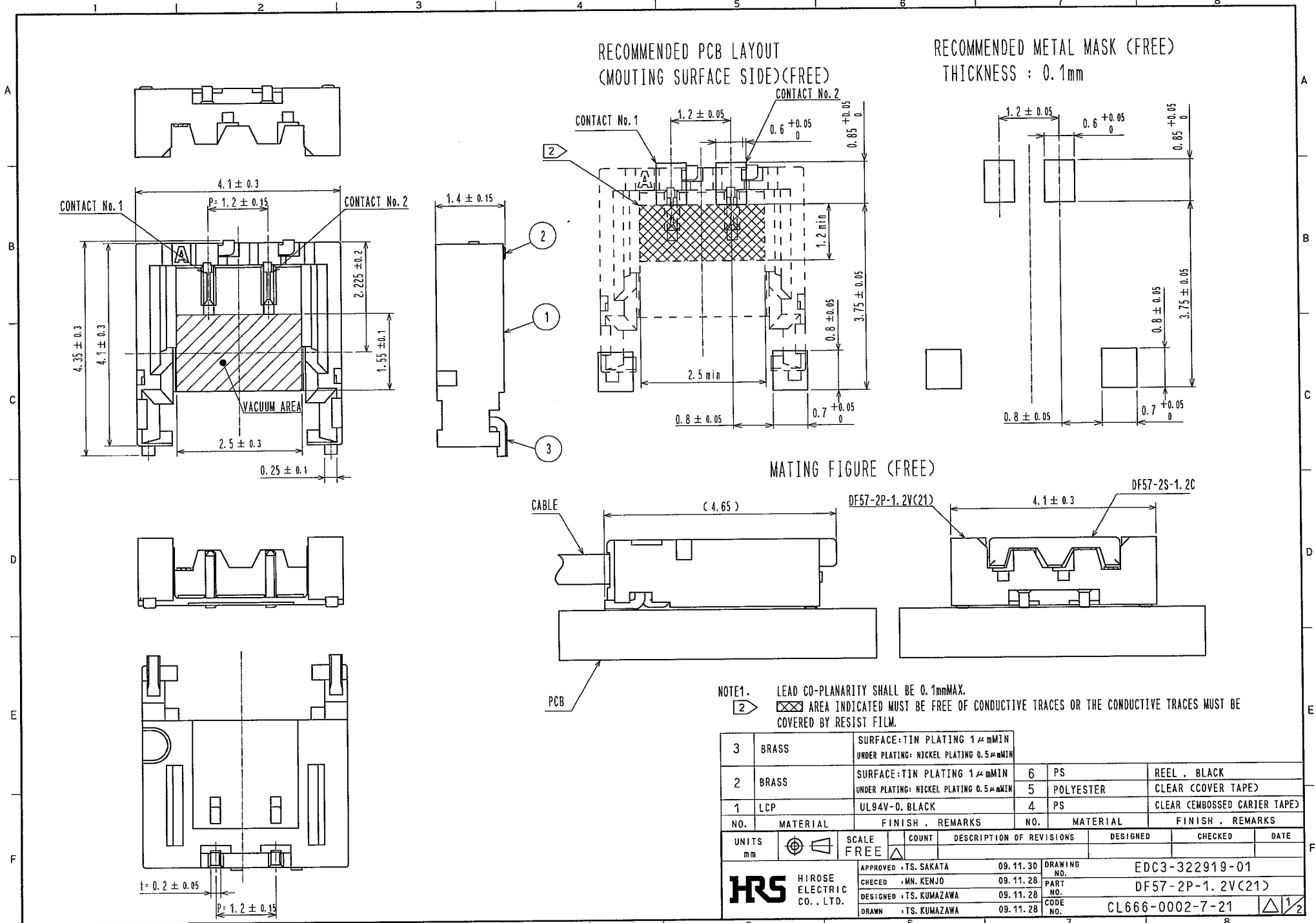
DF57-+S-1.2C

DIAGONAL ×



⚠ NOTE ① AVOID ANGLED INSERTION OF CRIMP CONTACT(DF57-2830SCF) TO MAINTAIN PERFORMANCE RELIABILITY.

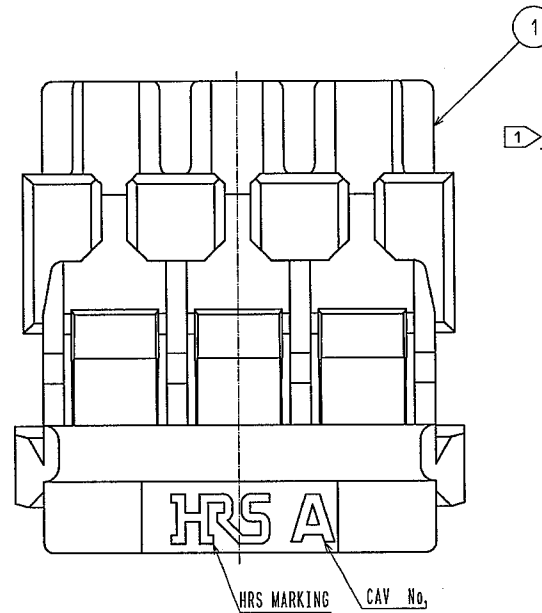
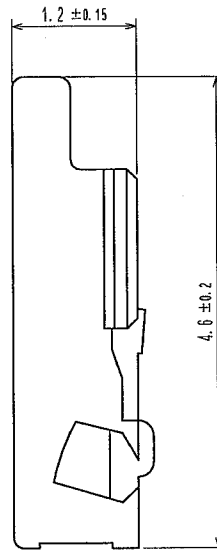
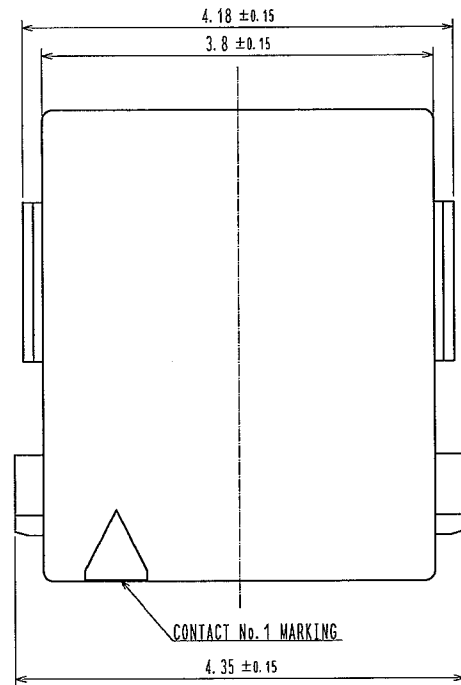
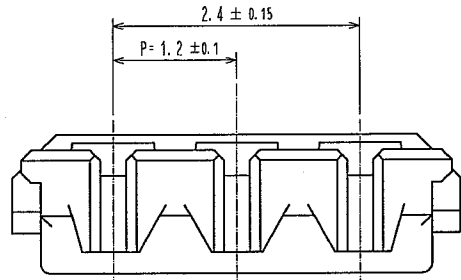
NO.		MATERIAL		FINISH, REMARKS			
1		PBT		UL94V-0, NATURAL(WHITE)			
UNITS	MATERIAL	SCALE	COUNT	DESCRIPTION OF REVISIONS	DESIGNED	CHECKED	DATE
mm		20:1	2	DIS-H-004418	TS. KUMAZAWA	HK. UMEHARA	09.12.19
<b>HRS</b> HIROSE ELECTRIC CO., LTD.				APPROVED	TS. SAKATA	09.11.30	DRAWING NO. EDC3-322922-00
				CHECKED	MM. KENJO	09.11.28	PART NO. DF57-2S-1.2C
				DESIGNED	TS. KUMAZAWA	09.11.28	CODE NO. CL666-0005-5-00
				DRAWN	TS. KUMAZAWA	09.11.28	



NOTE1. LEAD CO-PLANARITY SHALL BE 0.1mmMAX.  
 ② Hatched area indicated must be free of conductive traces or the conductive traces must be covered by resist film.

3	BRASS	SURFACE:TIN PLATING 1μmMIN UNDER PLATING: NICKEL PLATING 0.5μmMIN					
2	BRASS	SURFACE:TIN PLATING 1μmMIN UNDER PLATING: NICKEL PLATING 0.5μmMIN	6	PS	REEL, BLACK		
1	LCP	UL94V-0, BLACK	5	POLYESTER	CLEAR (COVER TAPE)		
			4	PS	CLEAR (EMBOSSED CARRIER TAPE)		
NO.	MATERIAL	FINISH, REMARKS	NO.	MATERIAL	FINISH, REMARKS		
UNITS	SCALE	COUNT	DESCRIPTION OF REVISIONS		DESIGNED	CHECKED	DATE
mm	FREE	△					
APPROVED : TS. SAKATA			09.11.30	DRAWING NO.		EDC3-322919-01	
CHECKED : MN. KENJO			09.11.28	PART NO.		DF57-2P-1.2V(21)	
DESIGNED : TS. KUMAZAWA			09.11.28	CODE NO.		CL666-0002-7-21	
DRAWN : TS. KUMAZAWA			09.11.28				



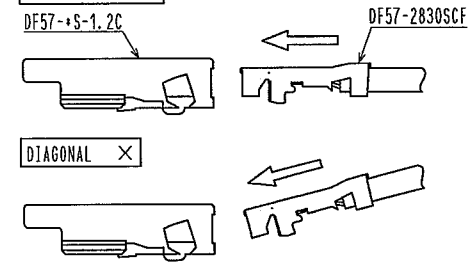


1 FIGURE OF INSERTION  $\Delta$

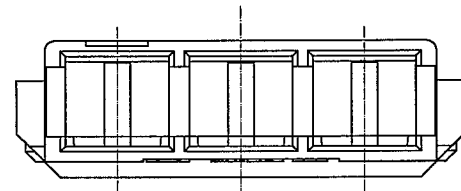
HORIZONTALLY  $\circ$

DF57-S-1.2C

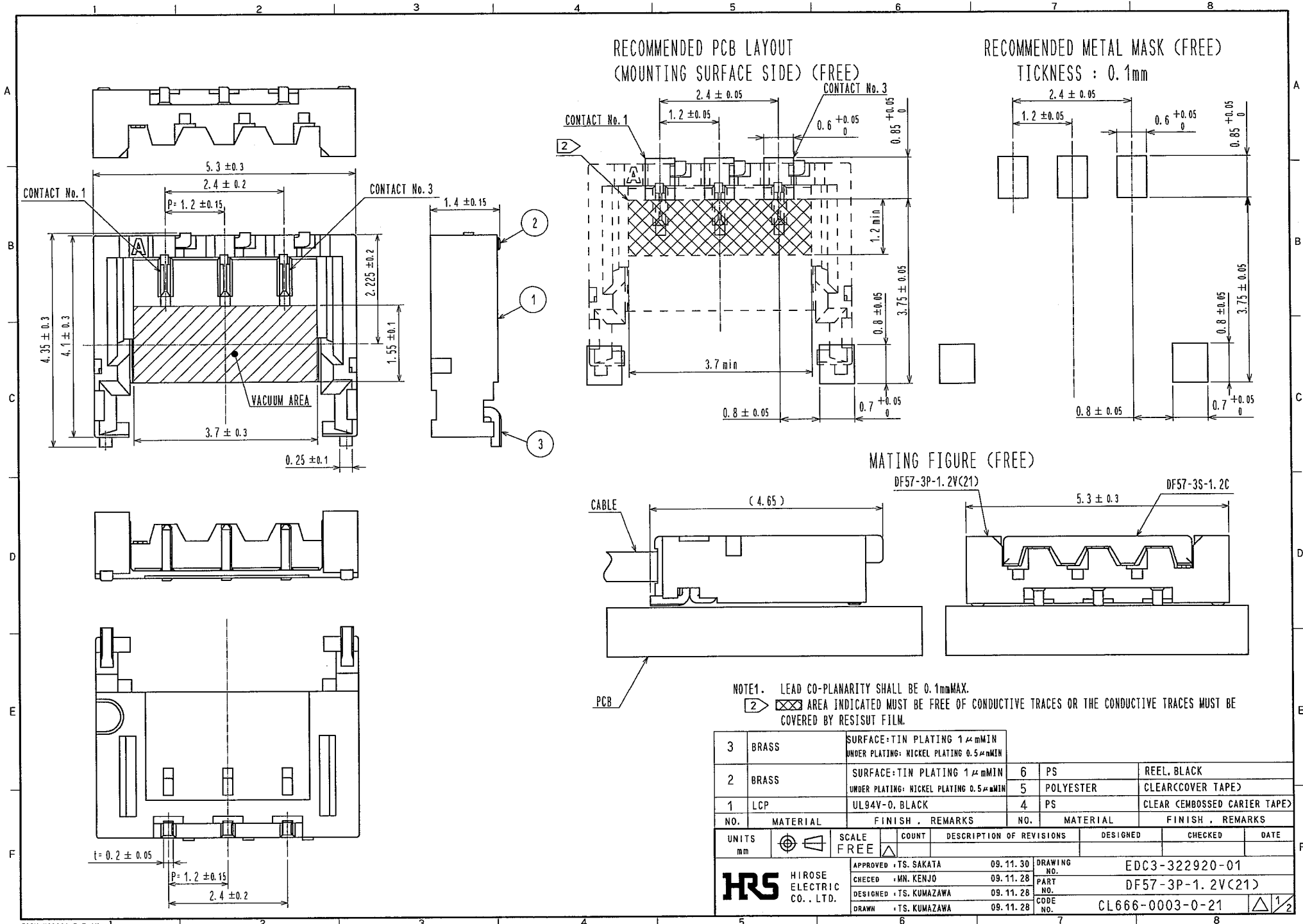
DIAGONAL  $\times$



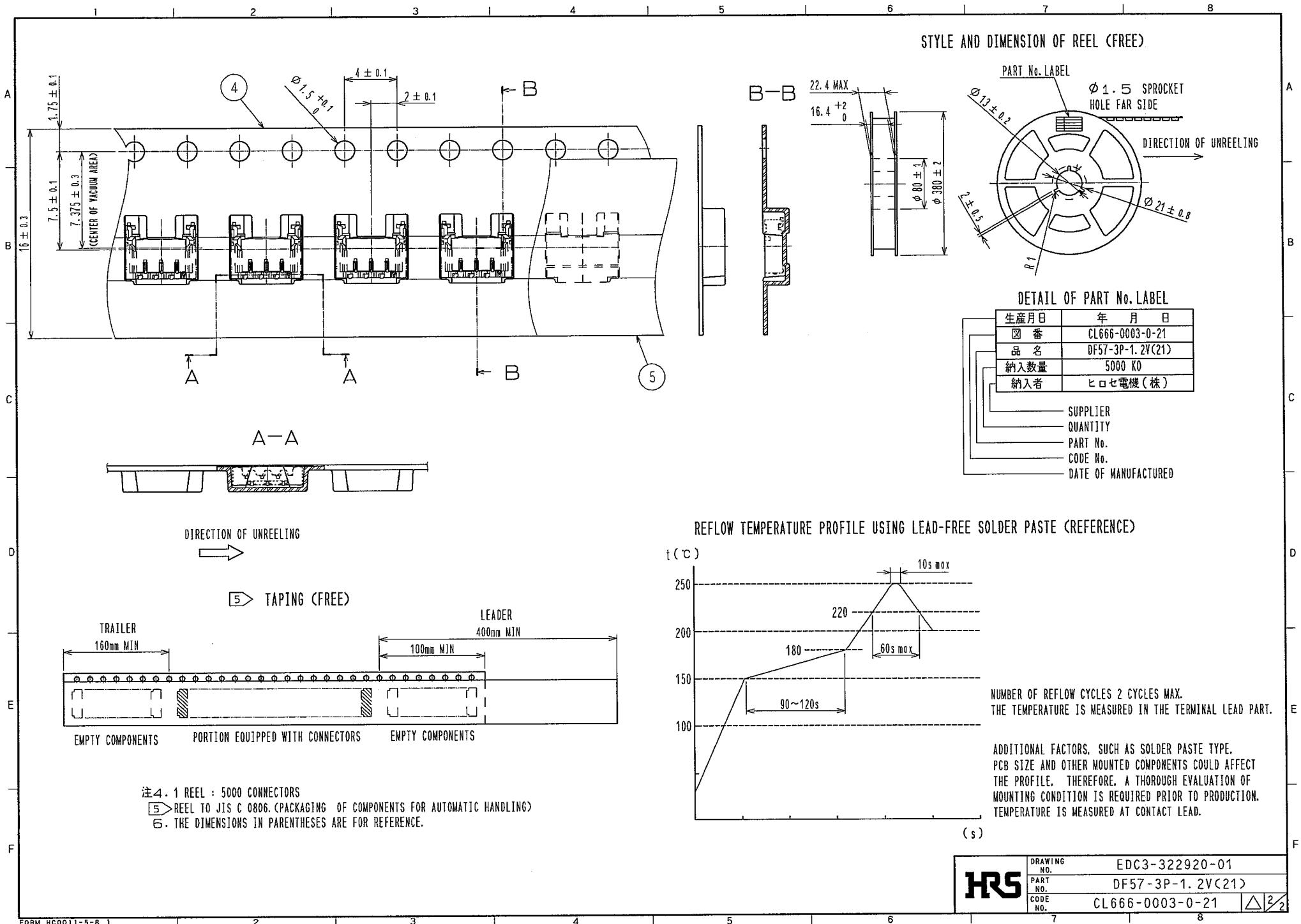
$\Delta$  NOTE 1 AVOID ANGLED INSERTION OF CRIMP CONTACT(DF57-2830SCF) TO MAINTAIN PERFORMANCE RELIABILITY.



		1		PBT	UL94V-0. NATURAL(WHITE)	
NO.	MATERIAL	FINISH . REMARKS		NO.	MATERIAL	FINISH . REMARKS
UNITS mm	$\oplus$ $\triangleleft$	SCALE 20 : 1	COUNT $\Delta$ 2	DESCRIPTION OF REVISIONS DIS-H-004418	DESIGNED TS. KUMAZAWA	CHECKED HK. UMEHARA
				DATE 09.12.19		
<b>HRS</b> HIROSE ELECTRIC CO., LTD.		APPROVED + TS. SAKATA	09.11.30	DRAWING NO. EDC3-322923-00		
		CHECED + MN. KENJO	09.11.28	PART NO. DF57-3S-1.2C		
		DESIGNED + TS. KUMAZAWA	09.11.28	CODE NO. CL666-0006-8-00		
		DRAWN + TS. KUMAZAWA	09.11.28	$\Delta$ 1		



3	BRASS	SURFACE: TIN PLATING 1 μmMIN UNDER PLATING: NICKEL PLATING 0.5 μmMIN	6	PS	REEL BLACK			
2	BRASS	SURFACE: TIN PLATING 1 μmMIN UNDER PLATING: NICKEL PLATING 0.5 μmMIN	5	POLYESTER	CLEARCOVER TAPE			
1	LCP	UL94V-0, BLACK	4	PS	CLEAR CEMBOSSED CARRIER TAPE			
NO.	MATERIAL	FINISH, REMARKS	NO.	MATERIAL	FINISH, REMARKS			
UNITS	mm	SCALE	FREE	COUNT	DESCRIPTION OF REVISIONS	DESIGNED	CHECKED	DATE
APPROVED		TS. SAKATA	09.11.30	DRAWING NO.		EDC3-322920-01		
CHECKED		MN. KENJO	09.11.28	PART NO.		DF57-3P-1.2V(21)		
DESIGNED		TS. KUMAZAWA	09.11.28	CODE NO.		CL666-0003-0-21		
DRAWN		TS. KUMAZAWA	09.11.28					



注4. 1 REEL : 5000 CONNECTORS  
 ⑤ REEL TO JIS C 0806. (PACKAGING OF COMPONENTS FOR AUTOMATIC HANDLING)  
 ⑥ THE DIMENSIONS IN PARENTHESES ARE FOR REFERENCE.

<b>HRS</b>	DRAWING NO.	EDC3-322920-01
	PART NO.	DF57-3P-1.2V(21)
	CODE NO.	CL666-0003-0-21
		△ 2/2