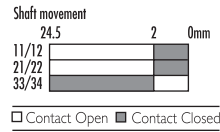
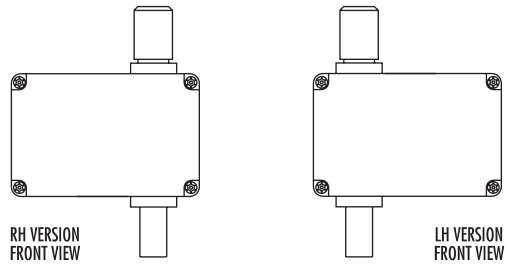
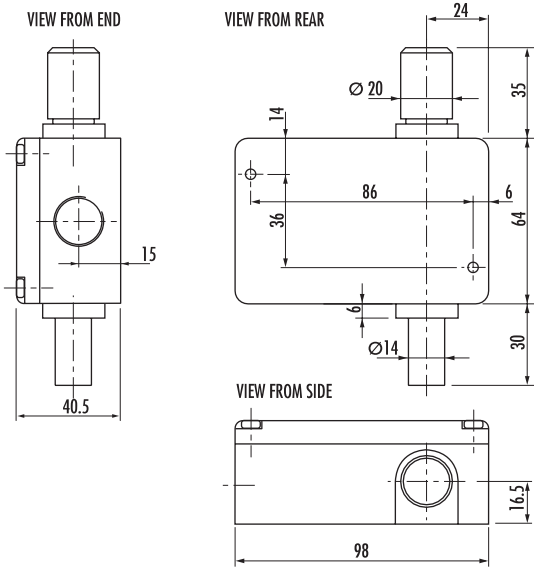


RIGHT AND LEFT HAND SWITCHES AVAILABLE (LEFT HAND SWITCH SHOWN)



specifications

Standards	EN 60947-5-1, EN 1088, EN 292, EN 60204-1
Approvals	CE marked for all applicable directives, CSA NRTL/C, BG,
Safety contact	2 N/C positive break
Utilization rating	AC I5
AC (Ue)	500V 250V 100V
(Ie)	1A 2A 5A
DC	250V 0.5A, 24V 2A
Max. switched current/voltage/load	500V/500VA
Thermal current (Ith)	10A
Minimum current	5V 5mA
Safety contact gap	>2mm
Rtd. insulation voltage	(Ui) 500V
Rtd. impulse withstand voltage	(Uimp) 2500V
Auxiliary contacts	1 N/C
Pollution degree	3
Shaft movement to achieve contact operation	2mm
Case material	Heavy duty die cast alloy
Locking shaft	Stainless Steel
Protection	IP65
Conduit entry	1 x M20 or 1 x Pg11
Operating temperature	-25°C to +80°C
Mounting	2 x M4
Mechanical life	1,000,000 operations

Electrical life	1,000,000 operations
Weight	500g
Colour	Red
Cleaning	May be high pressure steam cleaned

***Note:** The safety contacts of the Guardmaster switches are described as normally closed (N/C), i.e. with the guard closed, actuator in place (where relevant) and the machine able to be started