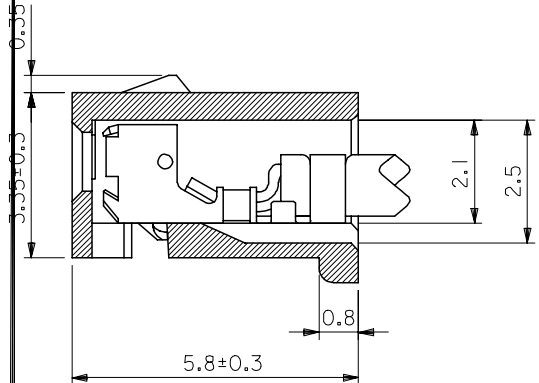
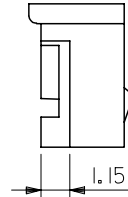
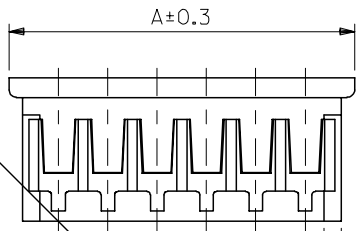
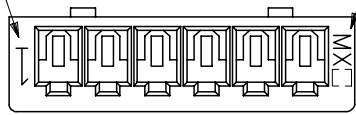


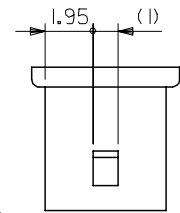
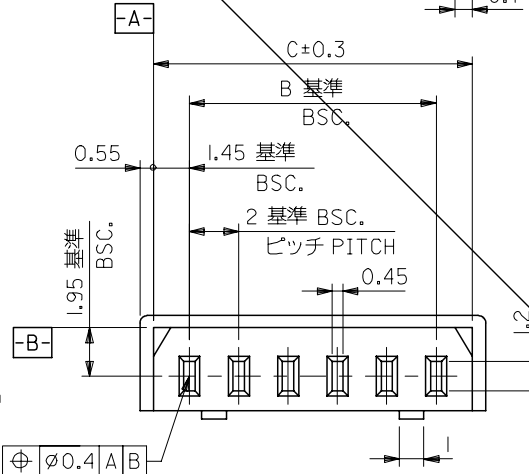
DWG. NO.  
SD-51004-\*\*00

回路番号  
CIRCUIT NO.

トレードマーク  
TRADE MARK

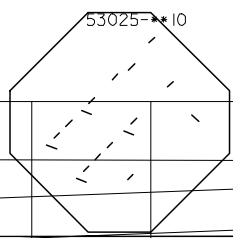


ターミナル装着状態  
TERMINAL ASSEMBLY DRAWING  
(10:1)



2極の場合  
IN CASE OF 2 CIRCUIT HSG.

- 注)  
NOTE.
1. 適合ターミナル: 50011-8\*00  
ACCEPTS TERMINAL
  2. 嵌合相手: 53014-\*\*10  
MATES WITH 53015-\*\*10



32	30.9	28	51004-1500	15
30	28.9	26	-1400	14
28	26.9	24	-1300	13
26	24.9	22	-1200	12
24	22.9	20	-1100	11
22	20.9	18	-1000	10
20	18.9	16	-0900	9
18	16.9	14	-0800	8
16	14.9	12	-0700	7
14	12.9	10	-0600	6
12	10.9	8	-0500	5
10	8.9	6	-0400	4
8	6.9	4	-0300	3
6	4.9	2	51004-0200	2
A	C	B	ENG.NO.	極数 CIRCUIT

DO NOT SCALE DRAWING

REDRAWN K2000-0629 K.KOHAMA T.YAMAGUCHI M.FUKUSHIMA	DESCRIPTION PBT. UL94V-0 POLYESTER UL94V-0	GENERAL TOLERANCES: (UNLESS SPECIFIED)	SCALE 5:1	- I IT <input checked="" type="checkbox"/> I I <input type="checkbox"/> I H	THI - - I H <input type="checkbox"/> I H <input checked="" type="checkbox"/> I I I	DIMENSIONS:	SHT	REV
		APPROVED M.FUKUSHIMA	DRAWN BY & DATE K.KOHAMA 007/3/28	TITLE: 2.0 LOW-PRO REC. HSG.	THI - - I H <input type="checkbox"/> I H <input checked="" type="checkbox"/> I I I	REVISE ON CAD ONLY		
REV			CAD FILENAME S51004.S01	CHECKED BY & DATE T.YAMAGUCHI 007/3/30				
			MATERIAL NO. 51004-**00	APPROVED M.FUKUSHIMA 007/3/30				
			DRAWING NO. SD-51004-**00					
			SHEET NO. 1					

S51004.S01