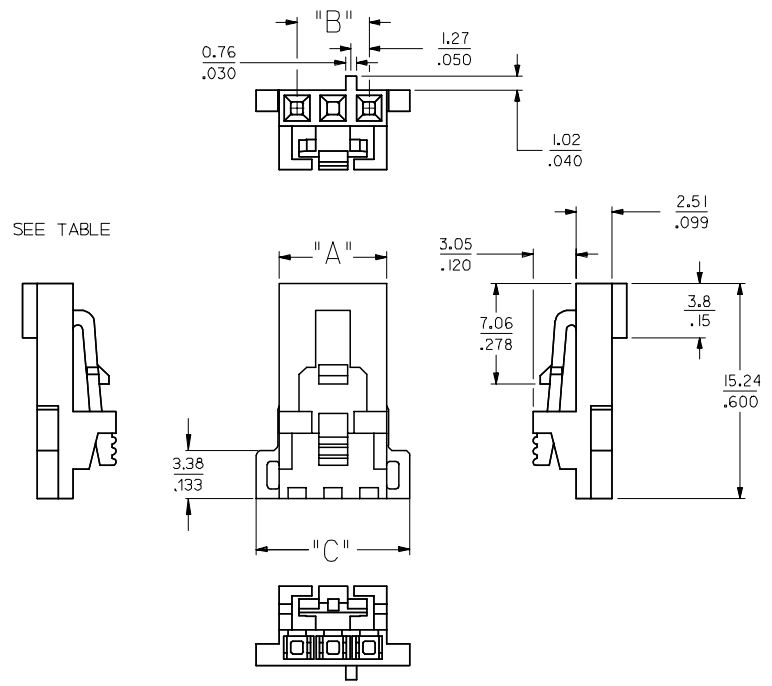
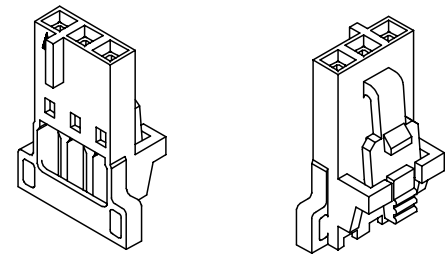
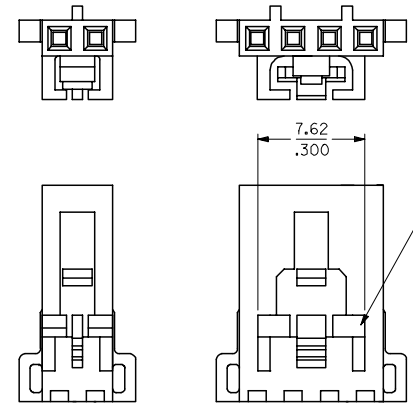


| CKT SIZE | EDP. NUMBER | ENG. NUMBER | DIM. 'A' | DIM. 'B' | DIM. 'C' |
|----------|-------------|-------------|----------------|----------------|----------------|
| 2 | 050-57-9702 | 70066-0386 | (5.00) / .197 | (2.54) / .100 | (8.26) / .325 |
| 3 | 050-57-9703 | 70066-0387 | (7.54) / .297 | (5.08) / .200 | (10.80) / .425 |
| 4 | 050-57-9704 | 70066-0388 | (10.08) / .397 | (7.62) / .300 | (13.34) / .525 |
| 5 | 050-57-9705 | 70066-0389 | (12.62) / .497 | (10.16) / .400 | (15.88) / .625 |
| 6 | 050-57-9706 | 70066-0390 | (15.16) / .597 | (12.70) / .500 | (18.42) / .725 |
| 7 | 050-57-9707 | 70066-0391 | (17.70) / .697 | (15.24) / .600 | (20.96) / .825 |
| 8 | 050-57-9708 | 70066-0392 | (20.24) / .797 | (17.78) / .700 | (23.50) / .925 |

TERMINAL POSITION ASSURANCE (TPA) OPTION "N"



2 CKT CONFIGURATION 4 THRU 8 CKT CONFIGURATION



- NOTES:
- 1) HOUSING, OPTION "N" FOR USE WITH TERMINAL RETENTION SUPPORT SERIES #73838 AND CONTACT SERIES NUMBERS 70058 AND 71851.
 - 2) REFER TO CHART FOR AVAILABLE CIRCUIT SIZES.
 - 3) MATERIAL: GLASS FILLED POLYESTER, .94V-0, COLOR: BLACK
 - 4) PACKAGE PER PK-70066-100.

| | | | | | | | | | |
|--|-----------------------------|---------------------------------------|------|--------------------------|--------------------|---|------------------------------|------------------------|---------------------|
| ADDED DIMENSION E.C. NO: UCP2007-1403 DRAWN: DANIELLEY 2007/01/09 CHKD: BARKER 2007/01/15 APPR: MILLER 2007/01/15 REV | QUALITY SYMBOLS =0 =0 | GENERAL TOLERANCES (UNLESS SPECIFIED) | | DIMENSION STYLE MM/IN | | SCALE 4:1 | DESIGN UNITS METRIC | THIRD ANGLE PROJECTION | |
| | | mm | INCH | DRAWN BY RE ISDORF | DATE 12/23/1998 | TITLE HOUSING, SL CRIMP FOR TERMINAL POSITION ASSURANCE, SALES DRAWING | MATERIAL NO. SD-70066-386 | | SHEET NO. 1 OF 1 |
| DRAFT WHERE APPLICABLE MUST REMAIN WITHIN DIMENSIONS | | SIZE C | | SEE TABLE | | THIS DRAWING CONTAINS INFORMATION THAT IS PROPRIETARY TO MOLEX INCORPORATED AND SHOULD NOT BE USED WITHOUT WRITTEN PERMISSION | | | |