

Document number: TTDS-001
Issue: 6
Date: August 2010

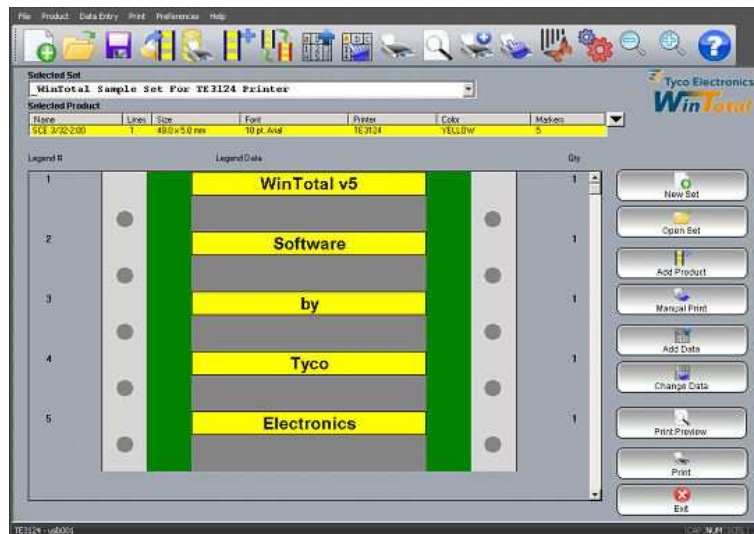
TECHNICAL DATASHEET

DESCRIPTION

WinTotal v5 software

APPLICATION / USE

Tyco Electronics' WinTotal software is a powerful wire, cable marker and label printing design package. The package is pre-loaded with all Tyco Electronics wire and label identification products to facilitate marker design. The software features a highly graphical user interface to simplify operator training and minimize errors.



ORDER INFORMATION

WINTOTAL-5-DONGLE ED4097-000

USB dongle version is the recommended software.

A serial number version is available on request.

Document number: TTDS-001

Issue: 6

Date: August 2010

DESCRIPTION	Software solution for high quality wire and harness identification and basic labeling applications
FEATURES	<p>Pre-Loaded Templates</p> <ul style="list-style-type: none">• Pre-loaded with all Tyco Electronics identification & labeling products, including heat-shrinkable sleeves, wraparound markers, cards, tags, self-laminating labels and plain labels <p>Printer Drivers</p> <ul style="list-style-type: none">• Embedded printer drivers included with software for Tyco Electronics recommended printers• Support for standard Windows drivers also available <p>Database</p> <ul style="list-style-type: none">• Importing ASCII and custom XMT comms files• XMT Server• ODBC import support for ASCII, Paradox, dBase, Excel, Access and other databases <p>Supported Barcodes</p> <ul style="list-style-type: none">• 1D & 2D barcodes supported <p>Supported Graphics</p> <ul style="list-style-type: none">• BMP, JPG, GIF, WMF, PCX <p>Design Options</p> <ul style="list-style-type: none">• Move, rotate, copy, delete from several parts of a label• Different units (mm and inch)• Zoom function• Incrementing alpha and numeric fields• User defined product capability• Programmable buttons for repeated data entry <p>Security</p> <ul style="list-style-type: none">• 3 password levels to restrict design, data entry and printing access
USER INTERFACE	WYSIWYG (What You See Is What You Get) full color display
	<p>Languages Available</p> <ul style="list-style-type: none">• Dutch• English• French• German• Italian• Norwegian• Spanish



Our commitment. Your advantage.

Document number: TTDS-001

Issue: 6

Date: August 2010

**MINIMUM SYSTEM
REQUIREMENTS**

Computer	IBM compatible PC
Processor	1GHz or higher 32bit (x86) or 64bit (x64)
RAM	128MB (Windows 2000 and Windows XP operating systems) 512MB (Windows Vista and Windows 7 Basic operating systems) 1GB (Windows Vista and Windows 7 Home Premium, Business and Ultimate operating systems)
Operating System	Windows 2000, Windows 2003 Server, Windows 2008 Server, Windows XP, Windows Vista or Windows 7 (32bit or 64bit)
Screen Resolution	1024 x 768 pixels
Disk Space Required	25MB

For email, phone or live chat, go to tycoelectronics.com/help

Document number: TTDS-001

Issue: 6

Date: August 2010

What's New?

A lot has changed in WinTotal software since the last version v4.9.00 was released. Previous version users may find here a summary of what is new.

System Requirements

- The support for Windows 95, Windows 98, Windows Me and Windows NT operating systems has been removed
- The following printers have also been removed as they are no longer supplied by Tyco Electronics. If you wish to use these printers, you must use an older software version.

2000Plus, AMT, AM6310, Critchley Thermal, Epson 1520, Epson FX (9 pin), Lexmark 2390, Oki (24 pin) RJS Model 260, Sato CL408, Sato CL412, Sato M8450, Sato GT424e, TMS2000T
All above are obsolete and no longer supported

TMS101TT Use the T208M model as this is identical
TMS-QLS2001 Use the T612M DS model as this is identical
Zebra 105S Use the T308S model as this is identical
Zebra 140xi Use the T408M model as this is identical
Zebra Stripe Use the T308S model as this is identical

Installation

- New multilingual installation program

Licensing

- New driver-less hardware key (dongle) is now supported; older hardware keys will not work on this version. A new one must be purchased from Tyco Electronics or one of its distributors.
- New serial number format for registration via a serial number; older serial numbers beginning with 0301- will not work on this software version. A new one must be purchased from Tyco Electronics or one of its distributors.
- New 'Activation Server' option for direct activation without the need for the user to enter the unlock code

Graphical Interface

- New red icon supporting the latest icon formats and sizes
- New toolbar design with larger clearer images

Document number: TTDS-001

Issue: 6

Date: August 2010

- New 'Selected Product' list box which can be customized
- New 'Zoom In' and 'Zoom Out' options
- New 'Print Preview' option to show preview before printing; serializations will be expanded with this feature
- New screen designs for all screens

Documentation

- New help file with more information
- Some texts have been changed in the program to be clearer on functions

Data Structure

- New WDF single file format allowing double clicking on the WDF file to open WinTotal software
- New single file user defined layouts file structure called WUP

Import

- New layout – advanced options can now be hidden or disabled based on user level access
- New 'Preview' option to review the import configuration without importing

Database Printing

- New feature allowing automatic import and print direct from databases without saving the data in WinTotal software

Add Product

- New 'Rotation Field' option for 90° rotation steps
- New option for 'Continuous Family Products' to specify the occurs and overlap dimensions
- New 'Auto Numbering Product' option – a feature that allows a counter legend to be created that updates after printing so the next print job will start from the next number
- User defined layouts with attached labels can no longer select alignment options in this screen as they are not applied

Document number: TTDS-001
Issue: 6
Date: August 2010

Delete Product

- New screen layout to delete multiple products

User Defined Layout

- New screen layout
- New file format with support to import and export layouts
- New option to allow a created layout name to be changed
- New 'Default Lines Per Product' option which limits the number of lines allowed per product the same as in the 'Add Product' screen

Design New Products

- New screen layout
- New features: 'Top Margin' and 'Left Margin', WYSIWYG* layouts and printer parameters

* stands for What You See Is What You Get: This is a common computing term used to show that the screen will display as per output.

Advanced Label Editing

- Access to unsupported features is now blocked to prevent users making configuration changes that are not supported

New Set

- New 'Keypad' options: 'Copy Previous Legend Line' and 'Copy 1st Line To All Lines'

Print

- New layout – advanced options can now be hidden or disabled based on user level access
- 'Speed' and 'Density' are now selectable from the print screen
- 'Print Mode' options are now selectable from the print screen
- Sensor parameters are now selectable from the print screen



Our commitment. Your advantage.

Document number: TTDS-001

Issue: 6

Date: August 2010

Advanced Print

- New screen layout
- New buttons for 'Print Queue' ordering

Paper Report

- The paper report can now print to a Windows printer

System Setup

- The System 90 and System 6/HSI printer configuration is now simplified into one default printer
- New assign printer screen with tree structure
- New options to specify database printing and graphics directory locations
- Language selection is now located in the 'Options' tab
- New options for mm and inches and the default file format are now in the 'Options' tab
- The new 'Selected Product' list box can now be configured in the 'View' tab
- Passwords are now configured in the 'User Access' tab
- New sub levels for user access that can be customized if required

Product is compliant to EU RoHS Directive 2002/95/EC. This compliance information is provided based on reasonable inquiry of our suppliers and represents our current actual knowledge based on the information provided by our suppliers. This information is subject to change. For the latest compliance status, visit the [Tyco Electronics RoHS Customer Support Center](#).

Critchley, TMS, TE (logo) and Tyco Electronics are trademarks of the Tyco Electronics group of companies and its licensors. Other logos, product and Company names mentioned herein may be trademarks of their respective owners.

Access, Excel, Windows 7, Windows 95, Windows 98, Windows 2000, Windows 2003, Windows Me, Windows NT, Windows Vista and Windows XP are trademarks of Microsoft Corporation. AMT is a trademark of Intel Corporation. dBASE is a trademark of Ashton-Tate. EPSON is a trademark of SEIKO EPSON KABUSHIKI KAISHA. IBM is a trademark of IBM. Lexmark is a trademark of Lexmark International, Inc. OKI is a trademark of OKI Electric Industry Co., Ltd. Paradox is a trademark of Corel Corporation. Sato is a trademark of SATO America, Inc. Zebra is a trademark of Zebra Technologies.

While Tyco Electronics has made every reasonable effort to ensure the accuracy of the information in this catalog, Tyco Electronics does not guarantee that it is error-free, nor does Tyco Electronics make any other representation, warranty or guarantee that the information is accurate, correct, reliable or current. Tyco Electronics reserves the right to make any adjustments to the information contained herein at any time without notice. Tyco Electronics expressly disclaims all implied warranties regarding the information contained herein, including, but not limited to, any implied warranties of merchantability or fitness for a particular purpose. The dimensions in this catalog are for reference purposes only and are subject to change without notice. Specifications are subject to change without notice. Consult Tyco Electronics for the latest dimensions and design specifications.