

SERIES 0100 - SINGLE-POLE TOGGLE SWITCHES

TO 2 A 250 V AC



PRODUCT FEATURES



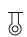



- ◆ Robust and powerful toggle switch with 50 000 mechanical switching cycles
- ◆ Central fastening with nut M12
- ◆ Metal or plastic lever

ON REQUEST

- ◆ Other terminal variants

Mechanical life endurance	5E4	
Material	actuator housing	metal / PA (product-dependent)
	terminals	CnZn nickel-plated / Duroplast (base) / chromated galvanized steel (bracket plate) silver plated



single-pole	Actuator color / printing	Housing color	2 A 250 V 1E3	Terminal type	Contact distance in mm	Contact material	Miscellaneous	Stock version
ON/OFF switch (SPST)								
0100.1201			●		≈ 3	CuZn silver plated	actuating torque 45.0 ±14.0 Nmm	●
0100.2901			●		≈ 3	CuZn silver plated	actuating torque 45.0 ±14.0 Nmm metal lever	●

ROCKER SWITCHES

PUSHBUTTON SWITCHES

TOGGLE SWITCHES

SLIDE SWITCHES

ROTARY SWITCHES

FOOT SWITCHES

FACT AND KEY SWITCHES

SNAP-ACTION SWITCHES

MICRO-SIGNAL SWITCHES

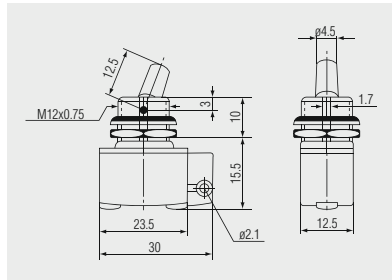
SENSORS

SERIES 0100 - SINGLE-POLE TOGGLE SWITCHES

TO 2 A 250 V AC



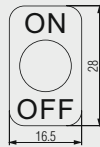
Basic type 0100



 Solder terminal



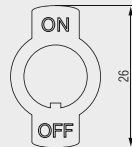
Identification plate
240.001.011



Identification plate of aluminum for plugging on with black inscription "ON" and "OFF"



Identification plate
240.002.011



Identification plate of CuZn nickel-plated for plugging on and with twist protection and stamped inscription "ON" and "OFF"

Further information under

WWW.MARQUARDT-SWITCHES.COM