

STRADA-T-DW-DD LENSES FOR SHARP DOUBLE DOME LEDS



SHARP.



- Specially designed for Sharp Double Dome series of LEDs.
- New extremely wide SIDE-EMITTING design with very and uniform light distribution. Planned to be used mixed with Strada-T-DN lenses for optimal streetlight patterns.
- ASYMMETRICAL design with excellent usable efficiency and beam control.
- Efficiently and easily fulfilling different requirements for urban and road lighting when used together with Strada-T-DN.
- Comes with integrated positioning pins.
- Lens material optical grade PMMA with high UV and temperature resistance (105°C/220°F). Allows use of high current and temperature conditions.
- Best available optical efficiency, approximately 92%.
- Fastening to heat sink with or without PU foam adhesive tape of automotive grade, please select which suits the best for your needs.
- Please check fastening details from this link:
(http://www.ledil.com/datasheets/DataSheet_TAPE.pdf)

LENS TYPES

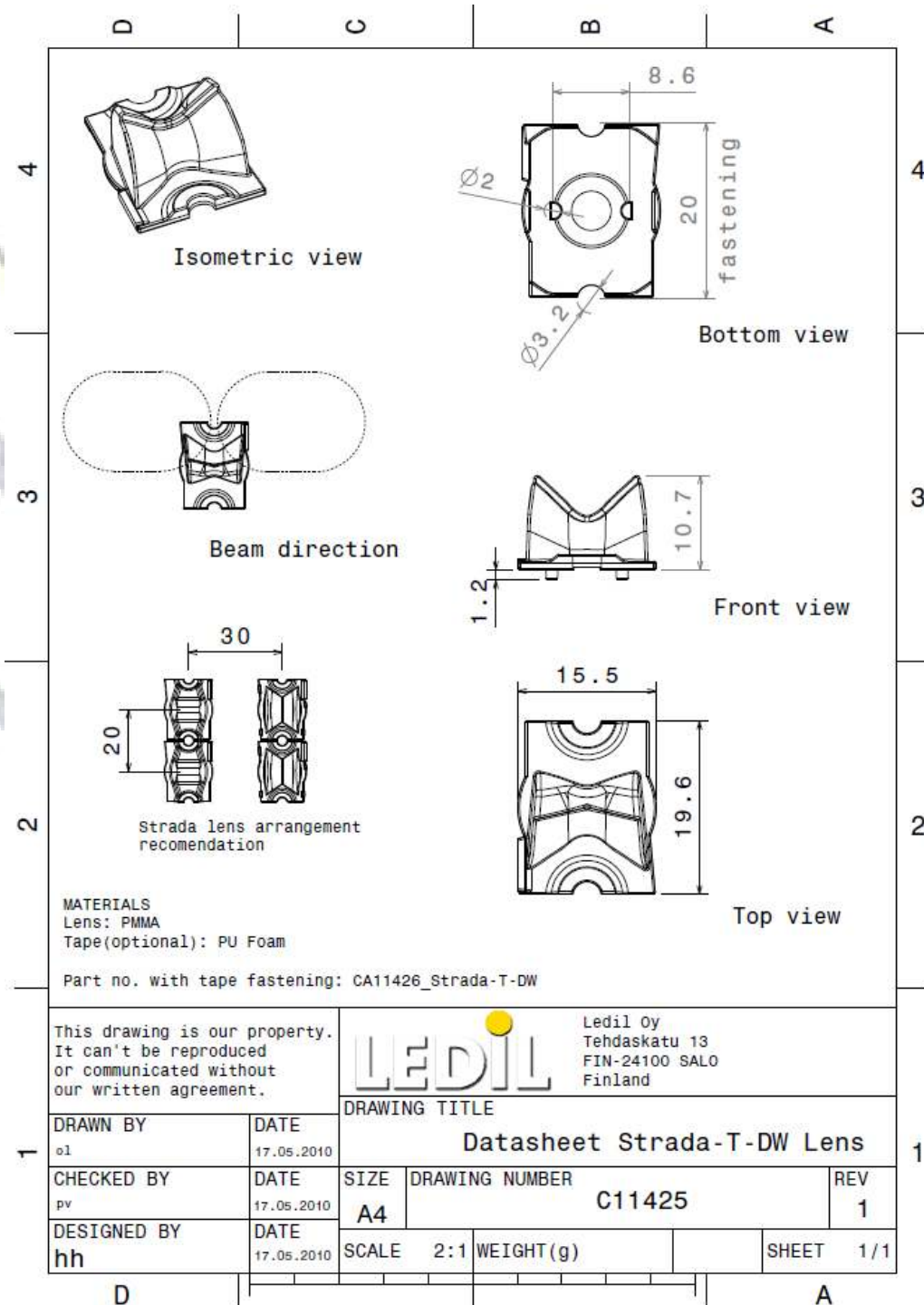
NAME	ORDERING CODE	FWHM Angle
Strada-T-DW-DD	C11425_Strada-T-DW-DD	approx. $\pm 72^\circ$
Strada-T-DW-DD-TAPE	CA11426_Strada-T-DW-DD -tape	approx. $\pm 72^\circ$

Eulumdat & IES files available by request.

© Ledil Oy – PRELIMINARY - Subject to change without prior notice

MEASUREMENT DATA & DRAWING

COMING SOON



© Ledil Oy – PRELIMINARY - Subject to change without prior notice