

P-touch QL-500



Choose the right label for the job

The P-touch QL-500 offers a wide range of labels and tapes to suit almost any usage.



DK Die-Cut Labels (Thermal Paper)

SENDER:
John O'Brien
8 The Grange, Slattsacks
Midton, Manchester. M03 1RV

Marie Hague
281 Bank St
Broadhaven
Lancashire
SK15 8EX

Dominic Rash
27 Fairtrees Rd
Peteston
Lancashire
SK8 1EW



Standard address labels
DK-11201 | 400 labels/roll 29mm x 90mm

Small address labels
DK-11209 | 800 labels/roll
29mm x 62mm

Large address labels
DK-11208 | 400 labels/roll 38mm x 90mm



Mike Bates Estates
Tame House, Denshaw,
Lincoln L194 1NX

CLIENT DATA 2005 A-M

Multi-purpose return labels
DK-11204 | 400 labels/roll 17mm x 54mm

File folder labels
DK-11203 | 300 labels/roll 17mm x 87mm

CD/DVD labels
DK-11207 | 100 labels/roll 58mm Ø

Shipping labels
DK-11202 | 300 labels/roll 62mm x 100mm

Durable Film



DK Continuous Length Tapes (Thermal Paper/Durable Film)



Narrow width tape
White tape DK-22214 12mm x 30.48m (Thermal Paper)



Medium width tape
White tape DK-22210 29mm x 30.48m (Thermal Paper)
White tape DK-22211 29mm x 15.24m (Durable Film)



Wide tape
White tape DK-22205 62mm x 30.48m (Thermal Paper)
White tape DK-22212 62mm x 15.24m (Durable Film)
Yellow tape DK-22606 62mm x 15.24m (Durable Film)
Clear tape DK-22113 62mm x 15.24m (Durable Film)



DANGER!

Continuous tape is ideal for creating signage and banners.

With continuous tape you can print labels 62mm wide and up to 1 metre long.

Contents

- 2 Starter Rolls
 - 1 x DK Die-Cut Standard Address Roll (100 labels, 29mm x 90mm)
 - 1 x DK Continuous Paper Tape Roll (62mm x 8m)
- Quick Start Guide
- Label Catch Tray
- Cleaning Sheet (for print roller)
- CD Rom (Software/Driver/User Guide)
- AC Power Cord
- USB Cable

System Requirements	
Computer	PC compatible
Operating System	Windows: 98SE/ME/2000 Pro/XP Pro/XP Home
CPU	Intel® Pentium® 266 MHz or higher (700MHz or higher recommended)
Memory (RAM)	Win 98SE, Me: 64MB or more required Win 2000 Pro, XP: 128MB or more required
Hard Disk Free Space	70MB or more
Interface	USB 1.1 or later specification
Other	CD-ROM drive for installation
Monitor	SVGA, high color or higher graphics card

Contact:

brother At your side.

Brother International Europe Ltd
Brother House, 1 Tame Street, Audenshaw, Manchester M34 5JE
Tel: + 44 (0) 161-330 6531 Fax: + 44 (0) 161-330 5520
Web-site: www.brother.com

All specifications correct at time of printing. Brother is a registered trademark of Brother Industries Ltd. Brand product names are registered trademarks or trademarks of their respective companies.

*À vos côtés

At your side.*
brother

P-touch
QL-500

Professional Labelling Solution

Brother P-touch QL-500

UP TO
50
LABELS PER MINUTE*

* Standard address labels

300 DPI
SHARP PRINTING

NEW
EASY PEEL
LABELS

MAKE LABELS UP TO
62mm
WIDE

NO PAPER JAMS
NO INK OR TONER NEEDED
NO LABEL WASTAGE



... Always at your side

At your side.*
brother®

No paper jams, no ink or toner needed, no label wastage

The P-touch QL-500 includes:

- 2 starter rolls
 - 1 x Die-cut standard address roll (100 labels, 29mm x 90mm)
 - 1 x DK Continuous Paper Tape roll (62mm x 8m)
- Quick Start Guide
- Label Catch Tray
- Cleaning Sheet (for print roller)
- CD Rom (Software/Driver/User Guide)
- AC Power Cord
- USB Cable

Direct thermal print technology
eliminates toner, ink and ribbon costs

Manual cutter
Cuts labels quickly and smoothly

Easy roll loading system
Simply insert roll and you are ready to print

USB Port
Connects easily to your PC

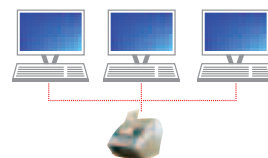
The Brother QL-500 Label Printer. Faster, more versatile and easy to use – a new level of label printing performance.

The Brother QL-500 Label Printer has taken label printing to new levels. Whether you need one label or many labels, it's the fastest, easiest and most versatile way to print labels directly from your PC. Perfect for printing address & shipping labels, banners & signage, this machine has **unique label flexibility** and can print on both **die-cut peel-off labels** or **continuous length tape**.

Fast printing of high quality labels

- ➔ Prints at speeds of up to 50 labels per minute*
- ➔ Includes P-touch Editor software which allows you to create custom layouts with barcodes, graphics, true type fonts and special formatting (including frames and tables)
- ➔ Highlight, click and print option for quickly printing labels from popular Microsoft Office applications including Outlook®, Word® and Excel®
- ➔ Direct Thermal print technology eliminates toner, ink and ribbon costs
- ➔ Label Templates - for quick label creation
- ➔ Full network connectivity allows multi-user printing with optional PS-9000 print server.

*Standard address labels

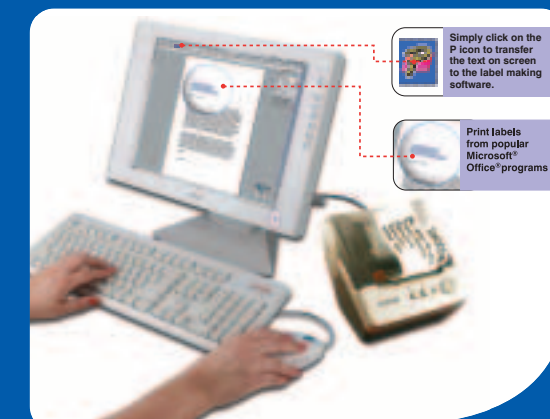


A totally versatile labelling solution

The Brother QL-500 makes it so easy to create customised labels for a wide variety of applications, including: files & folders, signage, envelopes & packages, badges, shelves, storage, retail, barcodes, CDs and videos.



Two Easy Ways to Make Labels

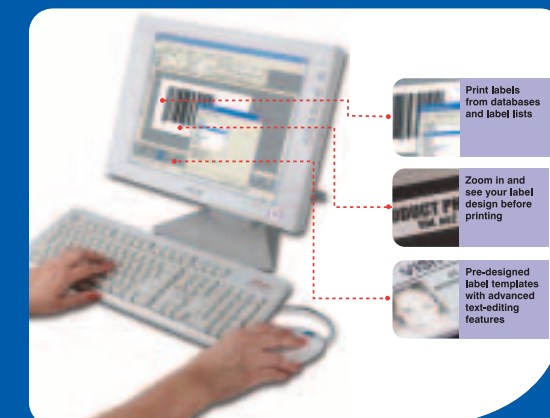


Simply click on the P icon to transfer the text on screen to the label making software.

Print labels from popular Microsoft® Office® programs

- ① Highlight, Click and Print
(Print directly from Microsoft Word®, Excel® and Outlook®)

OR



Print labels from databases and label lists

Zoom in and see your label design before printing

Pre-designed label templates with advanced text-editing features

- ② Get creative and design your own labels with our label design software

P-touch QL-500

www.P-touch.com

